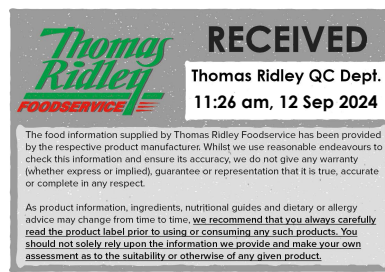


Changed Sep 12, 2024 10:24

Reviewed Sep 12, 2024 10:24

Erudus ID a6033d9db4324cbd8c61ba8071a0b665

Version 4.0



12687

# Elviart Premium Pita 850g

Pita Bread 12x10x8g

## PRODUCT DESCRIPTION

18cm pita bread, flat and supple bread when baked. 10 pieces of pita per unit, each pita weighs 85g.

Shelf life refrigerated (1-5°C): 5 days. Shelf life at -18°C: 12 months.

Brand	Odysea Ltd
Manufacturer Product Code	PTA54/10
Product Type	Food
Product Category	Wraps, Pittas & Thins
Storage Type	Frozen
Erudus ID	a6033d9db4324cbd8c61ba8071a0b665
Specification Type	Bakery Products



Inner Component GTIN

5201155001248



## INGREDIENTS

### Ingredient Declaration

WHEAT Flour, Water, Fresh Yeast, Sugar, Salt, Sunflower Oil, Raising agent (Sodium bicarbonate), Stabilisers (Xanthan Gum, Guar Gum), Emulsifier (Mono & diacetyl tartaric esters of mono & di glycerides of fatty acids), Enzymes, WHEAT GLUTEN, Preservatives (Sorbic Acid, Calcium Propionate).

## ALLERGENS

Product Contains:

<b>Celery/Celериac</b>	No	<b>Mustard</b>	No
<b>Cereals Containing Gluten</b>	Yes	<b>Nuts (Tree)</b>	No
<b>Barley</b>	No	<b>Almond nuts</b>	No
<b>Oats</b>	No	<b>Brazil nuts</b>	No
<b>Rye</b>	No	<b>Cashew nuts</b>	No
<b>Wheat (including Spelt and Khorasan)</b>	Yes	<b>Hazelnuts</b>	No
<b>Crustacea</b>	No	<b>Macadamia (Queensland) nuts</b>	No
<b>Eggs</b>	No	<b>Pecan nuts</b>	No
<b>Fish</b>	No	<b>Pistachio nuts</b>	No
<b>Lupin</b>	May Contain	<b>Walnuts</b>	No
<b>Milk</b>	No	<b>Peanuts</b>	No
<b>Molluscs</b>	No	<b>Sesame Seeds</b>	No
		<b>Soybeans</b>	May Contain
		<b>Sulphur Dioxide and Sulphites</b>	No

Risk Source:

### Additional Allergen Information

Not suitable for customers with an allergy to soya and lupin due to manufacturing methods.

SUPPLEMENTARY  
INGREDIENT  
INFORMATION

<b>Palm Oil</b>	No
<b>Hydrogenated Vegetable Oil/Fat</b>	Yes
<b>GM Protein/DNA</b>	No

ADDITIVES

Product Contains:

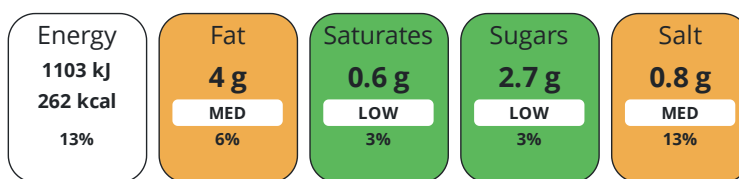
<b>Artificial Antioxidants</b>	No	<b>Artificial Flavourings</b>	No
<b>Artificial Colours</b>	No	<b>Artificial Preservatives</b>	No
<b>Artificial Flavour Enhancers</b>	No	<b>Artificial Sweeteners</b>	No

DIET  
SUITABILITY

<b>Vegan Diet</b>	Suitable for	<b>Vegetarian Diet</b>	Suitable for
<b>Halal Diet</b>	No	<b>Kosher Diet</b>	No

NUTRITIONAL  
INFORMATION

Each 100g/ml portion contains:



of your reference intake.

Typical values per 100g/ml : Energy 262kcal / 1103kj

Nutrient	per 100g	RI per 100g
<b>Energy (kJ)</b>	1103 kJ	13%
<b>Energy (kcal)</b>	262 kcal	13%
<b>Fat</b>	4 g	6%
of which Saturates	0.6 g	3%
of which Mono-unsaturates	< 0.1 g	
of which Polyunsaturates	< 0.1 g	
<b>Carbohydrate</b>	46.5 g	18%
of which Sugars	2.7 g	3%
<b>Fibre</b>	2.9 g	
<b>Protein</b>	8.4 g	17%
<b>Salt</b>	0.8 g	13%

SUPPLEMENTARY  
NUTRITIONAL  
INFORMATION

HANDLING &  
STORAGE  
INFORMATION

**Directions For Use**

18cm pita bread, flat and supple bread when baked. 8 pieces of pita per unit, each pita weighs 85g Shelf life refrigerated (1-5°C): 5 days. Shelf life at -18°C: 12 months.

**Storage Instructions**

Once defrosted, keep refrigerated and consume within 5 days. Do not refreeze

<b>Shelf Life from Time of Production</b>	365 Days
<b>Shelf Life Once Defrosted</b>	5 Days

ACCREDITATIONS/  
CERTIFICATIONS/  
ASSURANCE  
SCHEMES  
ORIGIN

<b>IFS Food Standard</b>	<b>Other Accreditation</b>
<b>Product Country of Origin/Place of Provenance</b>	Greece

PRODUCT CHARACTERISTICS

Standards Testing

**Do you undertake trend analysis of microbiological results?** No

**Is shelf life testing undertaken?** Yes

Microbiological Standards

Organism	Description	Frequency	Target	Maximum	Sample (g or ml)
Bacillus Cereus (cfu/g or ml)		Quarterly	<50	50	25
E. Coli (cfu/g or ml)		Quarterly	<10	10	25
Listeria Monocytogenes (cfu/g or ml)		Quarterly	<0	0	25
Staphylococcus Aureus (cfu/g or ml)		Quarterly	<10	10	25
Salmonella (cfu/g or ml)		Quarterly	=0	0	25

Physical Standards

Test	Description	Frequency	Target	Range	Sample (g or ml)
Weight (g)		Hourly	=680	650 to 680	680

CONFIGURATION

Case Configuration

Inner Pack Configuration

<b>Total Quantity of Inner Components in Outer Case</b>	12 Units
<b>Total Quantity of Inner Packs in Outer Case</b>	12 Units

<b>Quantity of Inner Components in Inner Pack</b>	10
---	----

PRODUCT WEIGHTS

Inner Component

<b>Variable Weight Consumer Item</b>	No
<b>Inner Component Weight</b>	8 g
<b>Net Drained Weight</b>	850 g

Outer Case

<b>Outer Case Gross Weight</b>	10.8 kg
<b>Outer Case Net Weight</b>	10.2 kg

PRODUCT DIMENSIONS

Inner Component

<b>Inner Component Depth</b>	200 mm
<b>Inner Component Width</b>	100 mm
<b>Inner Component Height</b>	185 mm

Outer Case

<b>Outer Case Depth</b>	575 mm
<b>Outer Case Width</b>	390 mm
<b>Outer Case Height</b>	195 mm

PALLET INFORMATION

<b>Quantity of Cases Per Pallet Layer</b>	4 Cases
<b>Quantity of Layers Per Pallet</b>	11 Layers
<b>Quantity of Cases Per Pallet</b>	44 Cases

**Pallet Height** 1.2 MTR

PACKAGING

Inner Component Packaging

Type	Materials	Weight	Recycled Plastic %	Recyclable	Returnable	Composite
Bag	Plastic	10 g	- %			

Outer Case Packaging

Type	Materials	Weight	Recycled Plastic %	Recyclable	Returnable	Composite
Case	Paper/Cardboard	490 g	- %			

Transport Packaging

Type	Materials	Weight	Recycled Plastic %	Recyclable	Returnable	Composite
Other	Wood	22000 g	- %			

OTHER  
INFORMATION  
CONTACT  
INFORMATION

Address

Odysea Ltd  
Sovereign House, 2 Dorma Trading Park  
Staffa Road  
London  
E10 7QX  
England

P: (Phone) 02076081841

The information on the [Erudus System](#) has been supplied by the manufacturers of the products and, whilst the owners of the Erudus System take steps to ensure the information is regularly updated, they give no warranty and no guarantee that the information is accurate. Product information and ingredients may change, please always read product labels carefully in addition to using the information provided by Erudus.

We do not accept liability for any inaccuracies or incorrect information contained on this site.  
Please visit <http://www.erudus.com/terms-and-conditions> for full terms and conditions.