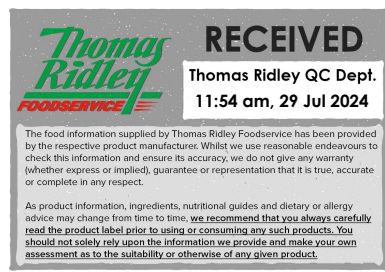


Changed Jul 29, 2024 10:39

Reviewed Jul 29, 2024 10:39

Erudus ID aa087111c9a949d4a5456ba34ba5958d

Version 4.0



DVG LEMON TEA SYRUP 6x1L

Dvg Lemon Tea Syrup 6x1l 6x1litre

PRODUCT DESCRIPTION

Lemon Tea syrup made with sugar, water, lemon juice concentrate, natural lime flavouring and natural lemon flavouring.

Brand	Kerry Ingredients UK Limited
Manufacturer Product Code	20393726
Effective Date	Jul 29, 2024
Product Type	Drink
Product Category	Juices and Cordials
Storage Type	Ambient
Erudus ID	aa087111c9a949d4a5456ba34ba5958d
Specification Type	Drinks
Inner Component GTIN	5018010001639
Outer Case GTIN	05018010401637



INGREDIENTS

Ingredient Declaration

Sugar, Water, Concentrated lemon juice (2.6%), Tea extract (2.4%), Colour (Plain caramel), Acidity regulator (Citric acid), Preservative (Potassium sorbate), Natural lime flavouring, Natural lemon flavouring.

ALLERGENS

Product Contains:

Celery/Celeriac	No	Mustard	No
Cereals Containing Gluten	No	Nuts (Tree)	No
Barley	No	Almond nuts	No
Oats	No	Brazil nuts	No
Rye	No	Cashew nuts	No
Wheat (including Spelt and Khorasan)	No	Hazelnuts	No
Crustacea	No	Macadamia (Queensland) nuts	No
Eggs	No	Pecan nuts	No
Fish	No	Pistachio nuts	No
Lupin	No	Walnuts	No
Milk	No	Peanuts	No
Molluscs	No	Sesame Seeds	No
		Soybeans	No
		Sulphur Dioxide and Sulphites	No

SUPPLEMENTARY INGREDIENT INFORMATION

Palm Oil	No
Hydrogenated Vegetable Oil/Fat	No
GM Protein/DNA	No

ADDITIVES

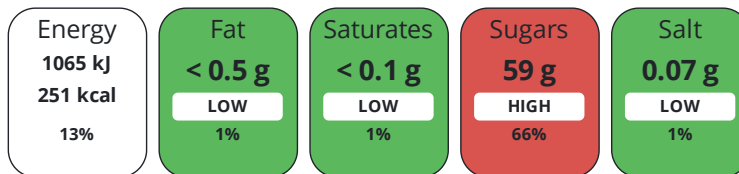
Product Contains:

Artificial Antioxidants	No	Artificial Flavourings	No
Artificial Colours	No	Artificial Preservatives	Yes
Artificial Flavour Enhancers	No	Artificial Sweeteners	No
Vegan Diet	Suitable for	Vegetarian Diet	Suitable for
Halal Diet	No	Kosher Diet	Suitable for

DIET SUITABILITY

NUTRITIONAL INFORMATION

Each 100g/ml portion contains:



of your reference intake.

Typical values per 100g/ml : Energy 251kcal / 1065kj

Nutrient	per 100g	RI per 100g
Energy (kJ)	1065 kJ	13%
Energy (kcal)	251 kcal	13%
Fat	< 0.5 g	1%
of which Saturates	< 0.1 g	1%
of which Mono-unsaturates	< 0.1 g	
of which Polyunsaturates	< 0.1 g	
Carbohydrate	62 g	24%
of which Sugars	59 g	66%
Fibre	< 0.5 g	
Protein	< 0.5 g	1%
Salt	0.07 g	1%
Sodium	30 mg	

Source of Nutritional Information Calculation based on known values of ingredients

SUPPLEMENTARY NUTRITIONAL INFORMATION

Trans Fats per 100 g/ml 0 g

HANDLING & STORAGE INFORMATION

Directions For Use

For use in Beverages Recommended usage: 16ml of syrup in a 340ml beverage

Storage Instructions

Ambient transportation 10- 25°C Store in a dry and dark place between 10- 25°C

Shelf Life from Time of Production 730 Days

ACCREDITATIONS/ CERTIFICATIONS/ ASSURANCE SCHEMES ORIGIN

BRCGS Certified

BRCGS Food Safety

Product Country of Origin/Place of United Kingdom

Provenance

Standards Testing

PRODUCT CHARACTERISTICS

Do you undertake trend analysis of microbiological results? No

Is shelf life testing undertaken? No

Microbiological Standards

Organism	Description	Frequency	Target	Maximum	Sample (g or ml)
Enterobacteriaceae (cfu/g or ml)	VRBGA, 37°C, 24Hrs	Every Batch	<10	10	1
Total Viable Count (TVC) (cfu/g or ml)	PCA, 30°C, 72Hrs	Every Batch	<100	100	1
Yeast (cfu/g or ml)	WA, 25°C, 5 Days	Every Batch	<10	10	1
Moulds (cfu/g or ml)	WA, 25°C, 5 Days	Every Batch	<10	10	1

Analytical Standards

Test	Description	Frequency	Target	Range	Sample (g or ml)
Brix (°Bx)		Every Batch	=63	61 to 65	1
pH		Every Batch	=3.0	2.6 to 3.4	1

ORGANOLEPTICS

Appearance

Brown colored syrupy liquid

Aroma

Typical of tea aroma with citrus notes

Taste

Sweet tea flavour with lemon flavour components

CONFIGURATION

Case Configuration

Inner Pack Configuration

Total Quantity of Inner Components in 6 Units

Outer Case

Is the Outer Case Splittable? No

PRODUCT WEIGHTS

Inner Component

Inner Component Volume 1 litre

e mark Yes

Outer Case

Outer Case Gross Weight 8.3 kg

Outer Case Net Weight 7.84 kg

PRODUCT DIMENSIONS

Inner Component

Inner Component Depth 86 mm

Inner Component Width 86 mm

Inner Component Height 290 mm

Outer Case

Outer Case Depth 300 mm

Outer Case Width 180 mm

Outer Case Height 300 mm

PALLET INFORMATION

Quantity of Cases Per Pallet Layer 23 Cases

Pallet Height 1.4 MTR

Quantity of Layers Per Pallet 4 Layers

Quantity of Cases Per Pallet 92 Cases

PACKAGING

Inner Component Packaging

Type	Materials	Weight	Recycled Plastic %	Recyclable	Returnable	Composite
Bottle	Plastic	45 g	- %	Yes	No	No

Outer Case Packaging

Type	Materials	Weight	Recycled Plastic %	Recyclable	Returnable	Composite
Case	Paper/Cardboard	200 g	- %	Yes	No	No

OTHER INFORMATION CONTACT INFORMATION

Address

Kerry Ingredients UK Limited
 Global Technology & Innovation Centre
 Millennium Park
 Naas
 Co.Kildare
 W91 W923
 Ireland

P: (Phone) +00 353 45 931 000

Technical Contact

Bernard James
 Sales Support
 bernard.james@kerry.com

Complaints Contact

Customer Service Europe
 Customer Service Europe
 customerserviceeurope@kerry.com

P: (Phone) +00 353 45 931 000

Commercial Contact

Daren Baalham
 Channel Controller
 daren.baalham@kerry.com

The information on the [Erudus System](#) has been supplied by the manufacturers of the products and, whilst the owners of the Erudus System take steps to ensure the information is regularly updated, they give no warranty and no guarantee that the information is accurate. Product information and ingredients may change, please always read product labels carefully in addition to using the information provided by Erudus.

We do not accept liability for any inaccuracies or incorrect information contained on this site.
 Please visit <http://www.erudus.com/terms-and-conditions> for full terms and conditions.