

Changed Jul 30, 2024 15:22

Reviewed Jul 30, 2024 15:22

Erudus ID f2bb873135f1449197d96d9965b018d7

Version 3.0

12696

# DVG STRAWBERRY SYRUP 6x1L

Dvg Strawberry Syrup 6x1litre

## PRODUCT DESCRIPTION

A strawberry flavour syrup made with sugar, natural flavouring, colour and preservative

Brand	Kerry Ingredients UK Limited
Manufacturer Product Code	20393734
Effective Date	Jul 30, 2024
Product Type	Drink
Product Category	Juices and Cordials
Storage Type	Ambient
Erudus ID	f2bb873135f1449197d96d9965b018d7
Specification Type	Drinks
Inner Component GTIN	5018010001790
Outer Case GTIN	05018010401798



## INGREDIENTS

### Ingredient Declaration

Sugar, water, Colour (Anthocyanins), Natural Flavouring, Acidity Regulator (Citric acid), Preservative (Potassium sorbate), Safflower Extract

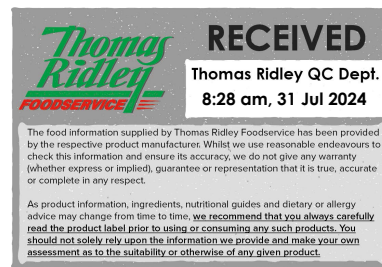
## ALLERGENS

Product Contains:

<b>Celery/Celeriac</b>	No	<b>Mustard</b>	No
<b>Cereals Containing Gluten</b>	No	<b>Nuts (Tree)</b>	No
<b>Barley</b>	No	<b>Almond nuts</b>	No
<b>Oats</b>	No	<b>Brazil nuts</b>	No
<b>Rye</b>	No	<b>Cashew nuts</b>	No
<b>Wheat (including Spelt and Khorasan)</b>	No	<b>Hazelnuts</b>	No
<b>Crustacea</b>	No	<b>Macadamia (Queensland) nuts</b>	No
<b>Eggs</b>	No	<b>Pecan nuts</b>	No
<b>Fish</b>	No	<b>Pistachio nuts</b>	No
<b>Lupin</b>	No	<b>Walnuts</b>	No
<b>Milk</b>	No	<b>Peanuts</b>	No
<b>Molluscs</b>	No	<b>Sesame Seeds</b>	No
		<b>Soybeans</b>	No
		<b>Sulphur Dioxide and Sulphites</b>	No

## SUPPLEMENTARY INGREDIENT INFORMATION

<b>Palm Oil</b>	No
<b>Hydrogenated Vegetable Oil/Fat</b>	No
<b>GM Protein/DNA</b>	No



ADDITIVES

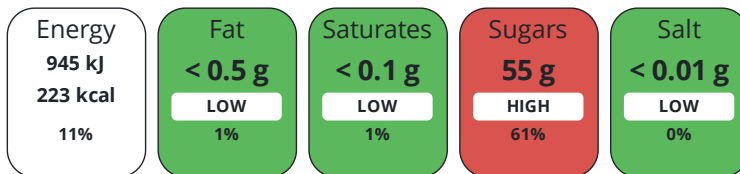
Product Contains:

<b>Artificial Antioxidants</b>	No	<b>Artificial Flavourings</b>	No
<b>Artificial Colours</b>	No	<b>Artificial Preservatives</b>	Yes
<b>Artificial Flavour Enhancers</b>	No	<b>Artificial Sweeteners</b>	No
<b>Vegan Diet</b>	Suitable for	<b>Vegetarian Diet</b>	Suitable for
<b>Halal Diet</b>	Suitable for	<b>Kosher Diet</b>	Suitable for

DIET SUITABILITY

NUTRITIONAL INFORMATION

Each 100g/ml portion contains:



of your reference intake.

Typical values per 100g/ml : Energy 223kcal / 945kj

Nutrient	per 100g	RI per 100g
<b>Energy (kJ)</b>	945 kJ	11%
<b>Energy (kcal)</b>	223 kcal	11%
<b>Fat</b>	< 0.5 g	1%
<b>of which Saturates</b>	< 0.1 g	1%
<b>of which Mono-unsaturates</b>	< 0.1 g	
<b>of which Polyunsaturates</b>	< 0.1 g	
<b>Carbohydrate</b>	56 g	22%
<b>of which Sugars</b>	55 g	61%
<b>Fibre</b>	< 0.5 g	
<b>Protein</b>	< 0.5 g	1%
<b>Salt</b>	< 0.01 g	0%
<b>Sodium</b>	< 0.01 mg	

**Source of Nutritional Information** Calculation based on known values of ingredients

SUPPLEMENTARY NUTRITIONAL INFORMATION

**Trans Fats per 100 g/ml** 0 g

HANDLING & STORAGE INFORMATION

**Directions For Use**

For use in Beverage Recommended use: 16 ml of syrup in a 340 ml drink

**Storage Instructions**

Ambient transportation (10- 25°C) Store in cool, clean dry warehousing between 10°C to 25°C

**Shelf Life from Time of Production** 730 Days

ACCREDITATIONS/ CERTIFICATIONS/ ASSURANCE SCHEMES ORIGIN

**BRCGS Certified**

**BRCGS Food Safety**

**Product Country of Origin/Place of Provenance** United Kingdom

PRODUCT CHARACTERISTICS

Standards Testing

**Do you undertake trend analysis of microbiological results?** No

**Is shelf life testing undertaken?** No

Microbiological Standards

Organism	Description	Frequency	Target	Maximum	Sample (g or ml)
Enterobacteriaceae (cfu/g or ml)	VRBGA, 37°C, 24Hrs	Every Batch	<10	10	1
Total Viable Count (TVC) (cfu/g or ml)	PCA, 30°C, 72Hrs	Every Batch	<100	100	1
Yeast (cfu/g or ml)	WA, 25°C, 5 Days	Every Batch	<10	10	1
Moulds (cfu/g or ml)	WA, 25°C, 5 Days	Every Batch	<10	10	1

Analytical Standards

Test	Description	Frequency	Target	Range	Sample (g or ml)
pH		Every Batch	=3.5	3.2 to 3.8	1
Brix (°Bx)		Every Batch	<55	54 to 56	1

CONFIGURATION

Case Configuration Inner Pack Configuration

**Total Quantity of Inner Components in Outer Case** 6 Units

**Is the Outer Case Splittable?** No

PRODUCT WEIGHTS

Inner Component

**Inner Component Volume** 1 litre

**e mark** Yes

Outer Case

**Outer Case Gross Weight** 8.02 kg

**Outer Case Net Weight** 7.56 kg

PRODUCT DIMENSIONS

Inner Component

**Inner Component Depth** 86 mm

**Inner Component Width** 86 mm

**Inner Component Height** 290 mm

Outer Case

**Outer Case Depth** 267 mm

**Outer Case Width** 300 mm

**Outer Case Height** 180 mm

PALLET INFORMATION

**Quantity of Cases Per Pallet Layer** 23 Cases **Pallet Height** 1.36 MTR

**Quantity of Layers Per Pallet** 4 Layers

**Quantity of Cases Per Pallet** 92 Cases

PACKAGING

Inner Component Packaging

Type	Materials	Weight	Recycled Plastic %	Recyclable	Returnable	Composite
Bottle	Plastic / PET (Polyethylene Terethphalate)	45 g	- %	Yes	No	No

Outer Case Packaging

Type	Materials	Weight	Recycled Plastic %	Recyclable	Returnable	Composite
Case	Paper/Cardboard	200 g	- %	Yes	No	No

OTHER INFORMATION

CONTACT  
INFORMATION

Address

Kerry Ingredients UK Limited  
Global Technology & Innovation Centre  
Millennium Park  
Naas  
Co.Kildare  
W91 W923  
Ireland

P: (Phone) +00 353 45 931 000

Complaints Contact

Customer Service Europe  
Customer Service Europe  
customerserviceeurope@kerry.com

P: (Phone) +00 353 45 931 000

Technical Contact

Bernard James  
Sales Support  
bernard.james@kerry.com

Commercial Contact

Daren Baalham  
Channel Controller  
daren.baalham@kerry.com

The information on the [Erudus System](#) has been supplied by the manufacturers of the products and, whilst the owners of the Erudus System take steps to ensure the information is regularly updated, they give no warranty and no guarantee that the information is accurate. Product information and ingredients may change, please always read product labels carefully in addition to using the information provided by Erudus.

We do not accept liability for any inaccuracies or incorrect information contained on this site.  
Please visit <http://www.erudus.com/terms-and-conditions> for full terms and conditions.