

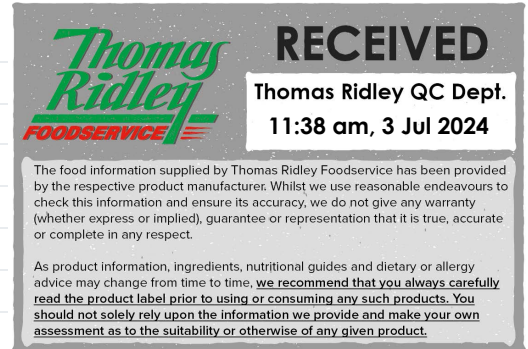
# DVG Spiced Chai Flavour Syrup 6 x 1L

Spiced Chai Flavour Syrup 6x

## PRODUCT DESCRIPTION

A Spiced Chai flavoured syrup made with sugar, natural flavouring and preservative.

<b>Brand</b>	Kerry Ingredients UK Limited
<b>Manufacturer Product Code</b>	20393733
<b>Product Type</b>	Drink
<b>Product Category</b>	Sugar and Sweeteners
<b>Storage Type</b>	Ambient
<b>Erudus ID</b>	b494df34d8fc4fc6ba519cd36f3519a8
<b>Specification Type</b>	Legacy
<b>Inner Component GTIN</b>	5018010001554
<b>Outer Case GTIN</b>	05018010401552



## INGREDIENTS

### Ingredient Declaration

Sugar, Water, Tea Extract, Honey, Colour (Plain caramel), Natural Flavouring, Acidity Regulator ( Citric Acid), Preservative (Potassium Sorbate).

## ALLERGENS

Product Contains:

<b>Celery/Celeriac</b>	No	<b>Mustard</b>	No
<b>Cereals Containing Gluten</b>	No	<b>Nuts (Tree)</b>	No
<b>Barley</b>	No	<b>Almond nuts</b>	No
<b>Oats</b>	No	<b>Brazil nuts</b>	No
<b>Rye</b>	No	<b>Cashew nuts</b>	No
<b>Wheat (including Spelt and Khorasan)</b>	No	<b>Hazelnuts</b>	No
<b>Gluten content &lt;20ppm</b>	Yes	<b>Macadamia (Queensland) nuts</b>	No
<b>Crustacea</b>	No	<b>Pecan nuts</b>	No
<b>Eggs</b>	No	<b>Pistachio nuts</b>	No
<b>Fish</b>	No	<b>Walnuts</b>	No
<b>Lupin</b>	No	<b>Peanuts</b>	No
<b>Milk</b>	No	<b>Sesame Seeds</b>	No
<b>Molluscs</b>	No	<b>Soybeans</b>	No
		<b>Sulphur Dioxide and Sulphites</b>	No

## SUPPLEMENTARY INGREDIENT INFORMATION

<b>Palm Oil</b>	No
<b>Hydrogenated Vegetable Oil/Fat</b>	No
<b>GM Protein/DNA</b>	No

## ADDITIVES

Product Contains:

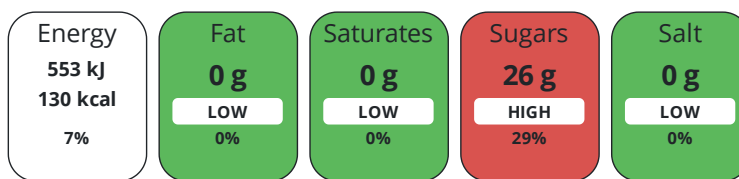
<b>Artificial Antioxidants</b>	No	<b>Artificial Flavourings</b>	No
<b>Artificial Colours</b>	No	<b>Artificial Preservatives</b>	Yes
<b>Artificial Flavour Enhancers</b>	No	<b>Artificial Sweeteners</b>	No

DIET  
SUITABILITY

<b>Suitable for Coeliacs</b>	Yes	<b>Halal Diet</b>	No
<b>Kosher Diet</b>	No	<b>Vegetarian Diet</b>	Suitable for
<b>Vegan Diet</b>	No		

NUTRITIONAL  
INFORMATION

Each 100g/ml portion contains:



of your reference intake.

Typical values per 100g/ml : Energy 130kcal / 553kJ

Nutrient	per 100g/ml	RI per 100g/ml
<b>Energy (kJ)</b>	553 kJ	7%
<b>Energy (kcal)</b>	130 kcal	7%
<b>Fat</b>	0 g	0%
of which Saturates	0 g	0%
of which Mono-unsaturates	0 g	
of which Polyunsaturates	0 g	
<b>Carbohydrate</b>	32 g	12%
of which Sugars	26 g	29%
of which Starch	0 g	
<b>Fibre</b>	< 0.5 g	
<b>Protein</b>	< 0.5 g	1%
<b>Salt</b>	0 g	0%

SUPPLEMENTARY  
NUTRITIONAL  
INFORMATION

HANDLING &  
STORAGE  
INFORMATION

**Directions For Use**

For use in Beverages. Recommended use: 16 ml of syrup in 340 ml drink

**Storage Instructions**

Transport & Storage Conditions: Ambient transportation between 10degC to 25degC Store in cool, clean dry warehousing

**Shelf Life from Time of Production** 730 Days

**BRCGS Certified**

ACCREDITATIONS/  
CERTIFICATIONS/  
ASSURANCE  
SCHEMES  
ORIGIN

**Product Country of Origin/Place of** United Kingdom

**Provenance**

Standards Testing

PRODUCT  
CHARACTERISTICS

<b>Do you undertake trend analysis of microbiological results?</b>	No	<b>Is shelf life testing undertaken?</b>	No
--	----	--	----

Microbiological Standards

Organism	Description	Frequency	Target	Maximum	Sample (g or ml)
Enterobacteriaceae (cfu/g or ml)	VRBGA, 37°C, 24Hrs	Every Batch	<10	10	-

Organism	Description	Frequency	Target	Maximum	Sample (g or ml)
Total Viable Count (TVC) (cfu/g or ml)	PCA, 30°C, 72Hrs	Every Batch	<100	100	-
Yeast (cfu/g or ml)	WA, 25°C, 5 Days	Every Batch	<10	10	-
Moulds (cfu/g or ml)	WA, 25°C, 5 Days	Every Batch	<10	10	-

Analytical Standards

Test	Description	Frequency	Target	Range	Sample (g or ml)
Brix (°Bx)	Refractometer	Every Batch	=58	56 to 60	-
pH	pH Meter	Every Batch	=4	3.8 to 4.2	-

CONFIGURATION

Case Configuration

Inner Pack Configuration

**Total Quantity of Inner Components in** 6 Units

**Outer Case**

**Is the Outer Case Splittable?** No

PRODUCT WEIGHTS

Inner Component

**Variable Weight Consumer Item** No

**Weight/Volume**

1ltr

Outer Case

**Outer Case Gross Weight** 8.1 kg

**Outer Case Net Weight** 7.66 kg

PRODUCT DIMENSIONS

Inner Component

**Inner Component Depth** 86 mm

**Inner Component Width** 86 mm

**Inner Component Height** 290 mm

Outer Case

**Outer Case Depth** 267 mm

**Outer Case Width** 180 mm

**Outer Case Height** 300 mm

PALLET INFORMATION

**Quantity of Cases Per Pallet Layer** 23 Cases

**Pallet Height** 1.36 MTR

**Quantity of Layers Per Pallet** 4 Layers

**Quantity of Cases Per Pallet** 92 Cases

PACKAGING

Inner Component Packaging

Type	Materials	Weight	Recycled Plastic %	Recyclable	Returnable	Composite
Bottle	Plastic	63 g	- %			

Outer Case Packaging

Type	Materials	Weight	Recycled Plastic %	Recyclable	Returnable	Composite
Case	Paper/Cardboard	200 g	- %			

OTHER INFORMATION

CONTACT  
INFORMATION

Address

Kerry Ingredients UK Limited  
Global Technology & Innovation Centre  
Millennium Park  
Naas  
Co.Kildare  
W91 W923  
Ireland

P: (Phone) +00 353 45 931 000

Complaints Contact

Customer Service Europe  
Customer Service Europe  
customerserviceeurope@kerry.com

P: (Phone) +00 353 45 931 000

Technical Contact

Bernard James  
Sales Support  
bernard.james@kerry.com

Commercial Contact

Daren Baalham  
Channel Controller  
daren.baalham@kerry.com

The information on the [Erudus System](#) has been supplied by the manufacturers of the products and, whilst the owners of the Erudus System take steps to ensure the information is regularly updated, they give no warranty and no guarantee that the information is accurate. Product information and ingredients may change, please always read product labels carefully in addition to using the information provided by Erudus.

We do not accept liability for any inaccuracies or incorrect information contained on this site.  
Please visit <http://www.erudus.com/terms-and-conditions> for full terms and conditions.