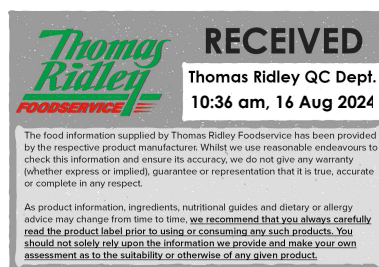


Changed Aug 16, 2024 09:26

Reviewed Aug 16, 2024 09:26

Erudus ID 6a1a649ebe8745e986f7fd3d6abf853c

Version 3.0



12767

SF Curry Powder 6x500g

Sf Curry Powder 6x500g

PRODUCT DESCRIPTION

Processed from ground spices to give a full flavour curry powder with a spicy aroma and flavour

Brand	Greenfields London Ltd
Manufacturer Product Code	2952
Product Type	Food
Product Category	Chillies, Herbs, & Spices
Storage Type	Ambient
Erudus ID	6a1a649ebe8745e986f7fd3d6abf853c
Specification Type	Generic
Inner Component GTIN	5027906042571
Outer Case GTIN	5027976042570



INGREDIENTS

Ingredient Declaration

Coriander, Turmeric, Fenugreek, Cumin, Coriander Leaves, Ginger, Cassia, Chilli, Black Pepper, Cloves

ALLERGENS

Product Contains:

Celery/Celeriac	No	Mustard	No
Cereals Containing Gluten	No	Nuts (Tree)	No
Barley	No	Almond nuts	No
Oats	No	Brazil nuts	No
Rye	No	Cashew nuts	No
Wheat (including Spelt and Khorasan)	No	Hazelnuts	No
Crustacea	No	Macadamia (Queensland) nuts	No
Eggs	No	Pecan nuts	No
Fish	No	Pistachio nuts	No
Lupin	No	Walnuts	No
Milk	No	Peanuts	No
Molluscs	No	Sesame Seeds	No
		Soybeans	No
		Sulphur Dioxide and Sulphites	No

Additional Allergen Information

Where products are indicated as not having an allergen present this refers to the product not being formulated or wholly derived from the particular ingredient. Allergen handling policies and procedures are in place through the supply chain to reduce the likelihood of cross contamination from allergens. Unless otherwise stated in the table above products are supplied, to the best of our knowledge, free from nuts and nut derivatives. Due diligence checks of the supply chain are in place, however due to the nature of the products supplied it is not possible for the company to guarantee that no cross contamination has taken place at some point in the supply chain prior to delivery to our premises.

SUPPLEMENTARY
INGREDIENT
INFORMATION

Palm Oil	No
Hydrogenated Vegetable Oil/Fat	No
GM Protein/DNA	No

ADDITIVES

Product Contains:

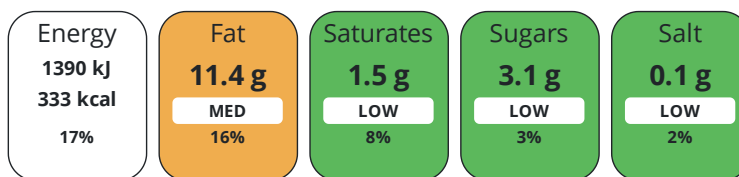
Artificial Antioxidants	No	Artificial Flavourings	No
Artificial Colours	No	Artificial Preservatives	No
Artificial Flavour Enhancers	No	Artificial Sweeteners	No

DIET
SUITABILITY

Vegan Diet	Suitable for	Vegetarian Diet	Suitable for
Halal Diet	Suitable for	Kosher Diet	Suitable for

NUTRITIONAL
INFORMATION

Each 100g/ml portion contains:



of your reference intake.

Typical values per 100g/ml : Energy 333kcal / 1390kJ

Nutrient	per 100g	RI per 100g
Energy (kJ)	1390 kJ	17%
Energy (kcal)	333 kcal	17%
Fat	11.4 g	16%
of which Saturates	1.5 g	8%
Carbohydrate	33.8 g	13%
of which Sugars	3.1 g	3%
Fibre	27.2 g	
Protein	13.2 g	26%
Salt	0.1 g	2%
Sodium	40 mg	

SUPPLEMENTARY
NUTRITIONAL
INFORMATION

HFSS (HIGH IN
FAT, SALT AND
SUGAR)
HANDLING &
STORAGE
INFORMATION

HFSS Status	Not Applicable (out of scope, exempt)
--------------------	---------------------------------------

Directions For Use

Use as a cooking ingredient

Storage Instructions

Store in a dry, cool place

Shelf Life from Time of Production	500 Days
---	----------

ACCREDITATIONS/
CERTIFICATIONS/
ASSURANCE
SCHEMES
ORIGIN

SALSA (Safe & Local Supplier Approval)	Other Accreditation
---	----------------------------

Product Country of Origin/Place of	United Kingdom
---	----------------

Provenance

Standards Testing

PRODUCT
CHARACTERISTICS

	Do you undertake trend analysis of microbiological results?	No	Is shelf life testing undertaken?	Yes			
	Microbiological Standards						
	Organism	Description	Frequency	Target	Maximum	Sample (g or ml)	
	E. Coli (cfu/g or ml)		Every Batch	<100	100	100	
	Salmonella (cfu/g or ml)		Every Batch	<0	0	25	
	HAZARD CONTROLS						
	Metal Detection	Yes					
CONFIGURATION	Case Configuration	Inner Pack Configuration					
	Total Quantity of Inner Components in Outer Case	6 Units					
	Is the Outer Case Splittable?	Yes					
PRODUCT WEIGHTS	Inner Component						
	Variable Weight Consumer Item	Yes					
	Inner Component Weight	500 g					
	Net Drained Weight	0.5 kg					
	Outer Case						
	Outer Case Gross Weight	3.3 kg					
	Outer Case Net Weight	3 kg					
PRODUCT DIMENSIONS	Inner Component						
	Inner Component Depth	120 mm					
	Inner Component Width	140 mm					
	Inner Component Height	140 mm					
	Outer Case						
	Outer Case Depth	400 mm					
	Outer Case Width	140 mm					
	Outer Case Height	280 mm					
PALLET INFORMATION	Quantity of Cases Per Pallet Layer	20 Cases	Pallet Type	UK Standard Pallet			
	Quantity of Layers Per Pallet	6 Layers	Pallet Height	1.8 MTR			
	Quantity of Cases Per Pallet	120 Cases	Pallet Gross Weight	440 kg			
PACKAGING	Inner Component Packaging						
	Type	Materials	Weight	Recycled Plastic %	Recyclable	Returnable	Composite
	Tub	Plastic	50 g	- %			
	Outer Case Packaging						
	Type	Materials	Weight	Recycled Plastic %	Recyclable	Returnable	Composite
	Tub	Plastic	50 g	- %			
	Box	Paper/Cardboard	20 g	- %			
	Transport Packaging						
	Type	Materials	Weight	Recycled Plastic %	Recyclable	Returnable	Composite
	Other	Plastic	200 g	- %			
	Other	Paper/Cardboard	150 g	- %			

OTHER
INFORMATION

Commodity Code

0910910500

Value Added Tax Rate

0%

CONTACT
INFORMATION

Address

Greenfields London Ltd
25 Crawford Street
London
W1H 1PL
United Kingdom

Technical Contact

Anna
Greenfields Team
anna@greenfieldsuk.co.uk

P: (Phone) 0208 997 8555

Commercial Contact

Karim Ali
Director
karim@greenfieldsuk.co.uk

P: (Phone) 0208 997 8555

The information on the [Erudus System](#) has been supplied by the manufacturers of the products and, whilst the owners of the Erudus System take steps to ensure the information is regularly updated, they give no warranty and no guarantee that the information is accurate. Product information and ingredients may change, please always read product labels carefully in addition to using the information provided by Erudus.

We do not accept liability for any inaccuracies or incorrect information contained on this site.
Please visit <http://www.erudus.com/terms-and-conditions> for full terms and conditions.