

Changed Jun 06, 2024 12:23

Reviewed Jun 06, 2024 12:23

Erudus ID 5582291cb37e42c2827957d5cf2f70b3

Version 2.0

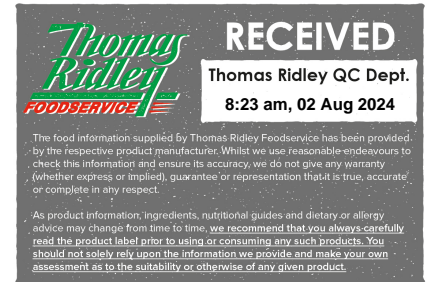
# Twister Ice Lolly Pineapple 80ml (NHFSS) (plant based)

Twister Ice Lolly Pineapple 80ml (Nhfss) (Plant Based) 35x80ml

## PRODUCT DESCRIPTION

Strawberry-lemon fruit ice with lemon fruit ice with lemon lime flavour and plant based pineapple ice cream

Brand	Unilever UK Limited
Manufacturer Product Code	69610624
Product Type	Food
Product Category	Ice Cream
Storage Type	Frozen
Erudus ID	5582291cb37e42c2827957d5cf2f70b3
Specification Type	Dairy
Inner Component GTIN	8711327575646
Outer Case GTIN	8711327575653



## INGREDIENTS

### Ingredient Declaration

Water, sugar, glucose syrup, lemon juice2 (5.5%), strawberry juice2 (4.5%), fructose, pineapple juice2 (1.5%), soluble fibre, coconut fat, stabilisers (guar gum, locust bean gum, tara gum), flavourings, black carrot concentrate, safflower concentrate, pea protein, acidity regulator (citric acid), beetroot juice concentrate, colours (chlorophylls, curcumin), emulsifier (mono- and diglycerides of fatty acids), salt.

## ALLERGENS

Product Contains:

<b>Celery/Celeriac</b>	No	<b>Mustard</b>	No
<b>Cereals Containing Gluten</b>	No	<b>Nuts (Tree)</b>	May Contain
<b>Barley</b>	No	<b>Almond nuts</b>	May Contain
<b>Oats</b>	No	<b>Brazil nuts</b>	No
<b>Rye</b>	No	<b>Cashew nuts</b>	No
<b>Wheat (including Spelt and Khorasan)</b>	No	<b>Hazelnuts</b>	No
<b>Crustacea</b>	No	<b>Macadamia (Queensland) nuts</b>	No
<b>Eggs</b>	No	<b>Pecan nuts</b>	No
<b>Fish</b>	No	<b>Pistachio nuts</b>	No
<b>Lupin</b>	No	<b>Walnuts</b>	No
<b>Milk</b>	May Contain	<b>Peanuts</b>	No
<b>Molluscs</b>	No	<b>Sesame Seeds</b>	No
		<b>Soybeans</b>	No
		<b>Sulphur Dioxide and Sulphites</b>	No

Risk Source:

### Additional Allergen Information

May contain almonds and milk. Gluten free.

SUPPLEMENTARY  
INGREDIENT  
INFORMATION

<b>Palm Oil</b>	No
<b>Hydrogenated Vegetable Oil/Fat</b>	No
<b>GM Protein/DNA</b>	No

ADDITIVES

*Product Contains:*

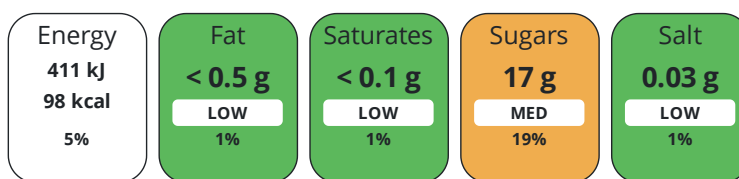
<b>Artificial Antioxidants</b>	No	<b>Artificial Flavourings</b>	No
<b>Artificial Colours</b>	No	<b>Artificial Preservatives</b>	No
<b>Artificial Flavour Enhancers</b>	No	<b>Artificial Sweeteners</b>	No

DIET  
SUITABILITY

<b>Vegetarian Diet</b>	Suitable for	<b>Halal Diet</b>	No
<b>Kosher Diet</b>	No		

NUTRITIONAL  
INFORMATION

Each 100g/ml portion contains:



of your reference intake.

Typical values per 100g/ml : Energy 98kcal / 411kj

Nutrient	per 100ml	RI per 100ml	per 80ml serving	RI per 80ml serving
<b>Energy (kJ)</b>	411 kJ	5%	328.8 kJ	4%
<b>Energy (kcal)</b>	98 kcal	5%	78.4 kcal	4%
<b>Fat</b>	< 0.5 g	1%	0.4 g	1%
<b>of which Saturates</b>	< 0.1 g	1%	0.1 g	1%
<b>Carbohydrate</b>	22 g	8%	17.6 g	7%
<b>of which Sugars</b>	17 g	19%	13.6 g	15%
<b>Fibre</b>	< 0.5 g		0.4 g	
<b>Protein</b>	< 0.5 g	1%	0.4 g	1%
<b>Salt</b>	0.03 g	1%	-	
<b>Serving Size</b>	80 ml			

SUPPLEMENTARY  
NUTRITIONAL  
INFORMATION

HANDLING &  
STORAGE  
INFORMATION

**Directions For Use**

N/A

**Storage Instructions**

Store -18 deg

**Shelf Life from Time of Production**

730 Days

ACCREDITATIONS/  
CERTIFICATIONS/  
ASSURANCE  
SCHEMES  
ORIGIN

**FSSC 22000**

**Product Country of Origin/Place of**

United Kingdom

**Provenance**

PRODUCT  
CHARACTERISTICS

Standards Testing

	<b>Do you undertake trend analysis of microbiological results?</b>	No	<b>Is shelf life testing undertaken?</b>	Yes
CONFIGURATION	Case Configuration		Inner Pack Configuration	
	<b>Total Quantity of Inner Components in Outer Case</b>	35 Units		
PRODUCT WEIGHTS	Inner Component			
	<b>Variable Weight Consumer Item</b>	No		
	<b>Inner Component Volume</b>	80 ml		
	Outer Case			
	<b>Outer Case Gross Weight</b>	2.78 kg		
	<b>Outer Case Net Weight</b>	2.49 kg		
PRODUCT DIMENSIONS	Inner Component			
	<b>Inner Component Depth</b>	30 mm		
	<b>Inner Component Width</b>	200 mm		
	<b>Inner Component Height</b>	45 mm		
	Outer Case			
	<b>Outer Case Depth</b>	314 mm		
	<b>Outer Case Width</b>	170 mm		
	<b>Outer Case Height</b>	183 mm		
PALLET INFORMATION	<b>Quantity of Cases Per Pallet Layer</b>	21 Cases	<b>Pallet Height</b>	1.61 MTR
	<b>Quantity of Layers Per Pallet</b>	8 Layers	<b>Pallet Gross Weight</b>	495.2 kg
	<b>Quantity of Cases Per Pallet</b>	168 Cases		
MARKETING INFORMATION	<b>Marketing Description</b>			
	Wall's Twister Pineapple, Lemon-Lime and Strawberry Mini Ice Cream Lolly makes for a delicious quick, frozen dessert treat – a firm favourite with both young and old. Chill out any time with the smooth plant-based creamy pineapple outer layer twisted with refreshing strawberry and lemon flavour fruit ice – a frozen dessert with a twist! What's more, each mini ice cream contains just 39 kcal and is made with natural flavours and fruit juice using a gluten-free recipe with no artificial colours. As part of our Responsibly Made for Kids promise, our Twister ice lollies are designed to be fun and tasty treats, whilst meeting our nutritional criteria for children's ice cream. To find out more, visit the Wall's website. *Fruit from purees and fruit juices from concentrate.			
OTHER INFORMATION CONTACT INFORMATION	Address		Technical Contact	
	Unilever UK Limited		Theresa Crayston	
	Lever House		R&D Assistant Deploy Manager UFS	
	3 St James Road		Theresa.Crayston@unilever.com	
	Kingston Upon Thames			
	KT1 2BA		<u>P: (Phone)</u> 07825008860	
	England			
	<u>P: (Phone)</u> 020 8547 8989			
	Complaints Contact		Commercial Contact	
	via the Careline - details on pack		Iwan Phillips	
	<u>P: (Phone)</u> 0800 783 3728		Route to Market, Away From Home	
			Iwan.Phillips@unilever.com	
			<u>P: (Phone)</u> +44 7795 645460	

The information on the [Erudus System](#) has been supplied by the manufacturers of the products and, whilst the owners of the Erudus System take steps to ensure the information is regularly updated, they give no warranty and no guarantee that the information is accurate. Product information and ingredients may change, please always read product labels carefully in addition to using the information provided by Erudus.

We do not accept liability for any inaccuracies or incorrect information contained on this site.  
Please visit <http://www.erudus.com/terms-and-conditions> for full terms and conditions.