

Changed Mar 22, 2024 00:00

Reviewed Mar 21, 2024 11:52

Erudus ID d72f29fc0e39471a812f56a2b1a55ba5

Version 2.0

12902

Halloumi Fries 6 x 1kg

Halloumi Fries

PRODUCT DESCRIPTION

Halloumi Fries - Sticks of halloumi in a batter and breadcrumb coating

Brand	Innovate Foods Ltd
Manufacturer Product Code	410005
Effective Date	Mar 21, 2024
Product Type	Food
Product Category	Breaded / Coated Cheese
Storage Type	Frozen
Erudus ID	d72f29fc0e39471a812f56a2b1a55ba5
Specification Type	Cheese



Outer Case GTIN 5018525002893



INGREDIENTS

Ingredient Declaration

Halloumi Cheese (41%) (Cow's MILK, Goat's MILK, Sheep's MILK, Mint) Wheat Flour (WHEAT Flour, Calcium Carbonate, Iron, Niacin, Thiamin) Water, Vegetable Oils (Sunflower, Rapeseed, in Varying Proportions); Rice Flour, WHEAT Starch, Stabiliser (Methyl Cellulose), Potato Starch, Salt, Raising Agents (Sodium Carbonates, Diphosphates) Yeast, Emulsifier (Mono- and Diacetyltartaric Acid Esters of Mono- and Diglycerides of Fatty Acids) Flour Treatment Agent (Ascorbic acid).

ALLERGENS

Product Contains:

Celery/Celериac	No	Mustard	No
Cereals Containing Gluten	Yes	Nuts (Tree)	No
Barley	No	Almond nuts	No
Oats	No	Brazil nuts	No
Rye	No	Cashew nuts	No
Wheat (including Spelt and Khorasan)	Yes	Hazelnuts	No
Crustacea	No	Macadamia (Queensland) nuts	No
Eggs	No	Pecan nuts	No
Fish	No	Pistachio nuts	No
Lupin	No	Walnuts	No
Milk	Yes	Peanuts	No
Molluscs	No	Sesame Seeds	No
		Soybeans	No
		Sulphur Dioxide and Sulphites	No

SUPPLEMENTARY INGREDIENT INFORMATION

Palm Oil	No
Hydrogenated Vegetable Oil/Fat	No
GM Protein/DNA	No

Thomas Ridley QC Dept.
11:43 am, 8 Aug 2024

The food information supplied by Thomas Ridley Foodservice has been provided by the respective product manufacturers. Whilst we use reasonable endeavours to check this information and ensure its accuracy, we do not give any warranty (whether express or implied), guarantee or representation that it is true, accurate or complete in any respect.

As product information, ingredients, nutritional guides and dietary or allergy advice may change from time to time, we recommend that you always carefully read the product label prior to using or consuming any such products. You should not solely rely upon the information we provide and make your own assessment as to the suitability or otherwise of any given product.



ADDITIVES

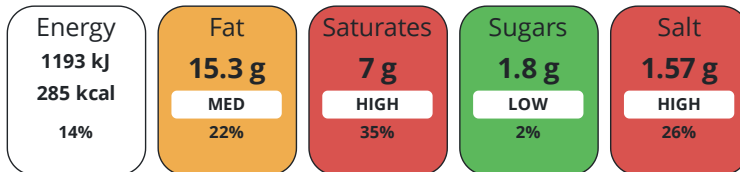
Product Contains:

Artificial Antioxidants	No	Artificial Flavourings	No
Artificial Colours	No	Artificial Preservatives	No
Artificial Flavour Enhancers	No	Artificial Sweeteners	No
Vegetarian Diet	Suitable for	Halal Diet	No
Kosher Diet	No		

DIET SUITABILITY

NUTRITIONAL INFORMATION

Each 100g/ml portion contains:



of your reference intake.

Typical values per 100g/ml : Energy 285kcal / 1193kj

Nutrient	per 100g	RI per 100g	per 100g serving	RI per 100g serving
Energy (kJ)	1193 kJ	14%	1193 kJ	14%
Energy (kcal)	285 kcal	14%	285 kcal	14%
Fat	15.3 g	22%	15.3 g	22%
of which Saturates	7 g	35%	7 g	35%
Carbohydrate	26.7 g	10%	26.7 g	10%
of which Sugars	1.8 g	2%	1.8 g	2%
Fibre	1 g		1 g	
Protein	12.1 g	24%	12.1 g	24%
Salt	1.57 g	26%	1.6 g	27%
Serving Size	100 g			

SUPPLEMENTARY NUTRITIONAL INFORMATION

HANDLING & STORAGE INFORMATION

Directions For Use

For the Best Results: Cook From Frozen Oven From Frozen: Pre-heat oven Fan 200°C/Gas 7/425F. Remove from all packaging. Place on a baking tray near the middle of the oven for 12 minutes. Turn half way though cooking time. Deep Fry From Frozen: Deep fry in oil at 180°C/365F for 2 minutes. Drain well before serving.

Storage Instructions

Store @-18C or colder

Shelf Life from Time of Production 547 Days

ACCREDITATIONS/ CERTIFICATIONS/ ASSURANCE SCHEMES ORIGIN

BRCGS Certified		Other Accreditation	
Product Country of Origin/Place of Provenance	United Kingdom		

PRODUCT CHARACTERISTICS

Standards Testing			
Do you undertake trend analysis of microbiological results?	No	Is shelf life testing undertaken?	No
Microbiological Standards			

Organism	Description	Frequency	Target	Maximum	Sample (g or ml)
E. Coli (cfu/g or ml)		Every Batch	<10	100	100
Enterobacteriaceae (cfu/g or ml)		Every Batch	<1000	10000	100
Listeria SPP (cfu/g or ml)	Target =0, Max =<10	Every Batch	=0	9	100
Coagulase-positive Staphylococci (cfu/g or ml)		Every Batch	<20	100	100

CONFIGURATION

Case Configuration Inner Pack Configuration

Total Quantity of Inner Components in 6 Units

Outer Case

Is the Outer Case Splittable? Yes

PRODUCT WEIGHTS

Inner Component

Variable Weight Consumer Item Yes

Outer Case

Outer Case Gross Weight 6.4 kg

Outer Case Net Weight 6 kg

PRODUCT DIMENSIONS

Inner Component

Inner Component Depth 300 mm

Inner Component Width 250 mm

Inner Component Height 50 mm

Outer Case

Outer Case Depth 390 mm

Outer Case Width 290 mm

Outer Case Height 150 mm

PALLET INFORMATION

Quantity of Cases Per Pallet Layer 10 Cases

Pallet Height 1.5 MTR

Quantity of Layers Per Pallet 10 Layers

Pallet Gross Weight 640 kg

Quantity of Cases Per Pallet 100 Cases

PACKAGING

Inner Component Packaging

Type	Materials	Weight	Recycled Plastic %	Recyclable	Returnable	Composite
Bag	Plastic	8 g	- %			

Outer Case Packaging

Type	Materials	Weight	Recycled Plastic %	Recyclable	Returnable	Composite
Case	Paper/Cardboard	350 g	- %			

Transport Packaging

Type	Materials	Weight	Recycled Plastic %	Recyclable	Returnable	Composite
Other	Plastic	300 g	- %		Yes	

OTHER INFORMATION

Identification/Health Marks UK KC 123M EEC

Manufacturer Comments

none

CONTACT
INFORMATION

Address

Innovate Foods Ltd
Barnraig
Boreland Road
Kirkcaldy
Fife
KY1 2YG
Scotland

P: (Phone) 01592 651525

The information on the [Erudus System](#) has been supplied by the manufacturers of the products and, whilst the owners of the Erudus System take steps to ensure the information is regularly updated, they give no warranty and no guarantee that the information is accurate. Product information and ingredients may change, please always read product labels carefully in addition to using the information provided by Erudus.

We do not accept liability for any inaccuracies or incorrect information contained on this site.
Please visit <http://www.erudus.com/terms-and-conditions> for full terms and conditions.