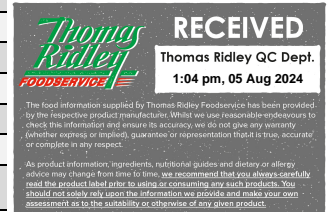


GENERAL INFORMATION



PRODUCT NAME	FETA CHEESE P.D.O.
LEGAL PRODUCT DENOMINATION	FETA HOTOS 900gr in Vacuum
TYPE OF CHEESE	SOFT CHEESE
TYPE OF PACKAGING	VACUUM
PRODUCERS CODE	0474
INGREDIENTS	Pasteurized Sheep's milk (min 70%) & Goat's milk (max 30%), salt, microbial rennet , starter culture
ALLERGENS	MILK
COUNTRY OF ORIGIN	HELLAS
EEC SANITARY AGREEMENT	GR 31.27 EC
CUSTOMS/TARIC CODE	04069032
BILLING UNIT	KG/PIECE
ORDER LEAD TIME	2 WEEKS
MINIMUM ORDER	1 PALLET
CONFIRMATION FOR GMO	GMO FREE



NUTRITIONAL VALUES FOR 100g

ENERGY		FAT		CARBOHYDRATES		PROTEINS	SALT	FIBRES
KJ	1122	22g		0.7g		17.4g	2.2g	<0.1g
kcal	270	Of which saturated	15.6g	Of which sugars	0.2g			

ORGANOLEPTICAL CHARACTERISCS

ASPECT-COLOUR	WHITE
ODOUR	LACTIC
TEXTURE	CRUMBLY WITH SOME FISSURES
FLAVOR	MILD ACCIDIC, SALTY

MICROBIOLOGICAL DATA

STAPHYLOCOCCUS AUREUS	100-1000(cfu/g)
ESCHERICHIA COLI	10-100(cfu/g)
LISTERIA SPP	ABSENCE (cfu/25g)
SALMONELLA SPP	ABSENCE (cfu/25g)

CHEMICAL DATA

PH	4.2-4.5
MOISTURE	≤56%
FAT IN DRY	≥43%
SALT	2%-3%

LOGISTICS INFORMATION

EAN 13 - UNIT	5202425000664
EAN 13- CASE	5202425000671
SHELF-LIFE AT DELIVERY	7 MONTHS
SHELF-LIFE FROM PRODUCTION	12 MONTHS
STORAGE TEMPERATURE	+2°C TO +6°C

WEIGHT - DIMENSIONS

	WEIGHT		DIMENSIONS (CM)		
	NET WEIGHT (kg)	GROSS WEIGHT (kg)	LENGTH	WIDTH	HEIGHT
UNIT	0.9	0.906	10	9	8.5
CASE	5.4	5.61	34	24.5	10
PALLET	648	698.2	120	80	134

PACKAGING/PALLETIZATION

UNITS/CASE	CASES/LAYER	LAYERS/PALLET	CASES/PALLET	UNITS/PALLET
6	10	12	120	720



PRODUCT SHEET

FETA CHEESE P.D.O. 900gr in Vacuum

ISSUE DATE:25/04/2024

TABLE OF ALLERGENS

ALLERGEN DECLARATION		
Contains	YES	NO
Cow's Milk or Cow's Milk products		√
Goat's Milk or Goat's Milk products	√	
Sheep's Milk or Sheep's Milk products	√	
Gluten or Cereals containing Gluten (Wheat, Rye, Barley, Oats, Spelt, Kamut or their hybridised strains)		√
Egg or Egg derivatives		√
Crustaceans, Molluscs or their derivatives		√
Fish or Fish derivatives		√
Lupin or Lupin derivatives		√
Mustard, Mustard products		√
Nut or Nut derivatives		√
Peanuts or Peanut derivatives		√
Sesame Seeds or Sesame Seed derivatives		√
Soybean or Soybean derivatives		√
Celery or Celery derivatives		√
Sulphites and Sulphur Dioxide		√