

NielsenIQ Brandbank

Ritz Bakery The Original Cracker 150g



EAN
7622201386597

Target market(s)
GB, IE

Thomas Ridley
FOODSERVICE

RECEIVED
Thomas Ridley QC Dept.
8:48 am, 6 Aug 2024

The food information supplied by Thomas Ridley Foodservice has been provided by the respective product manufacturer. Whilst we use reasonable endeavours to check this information and ensure its accuracy, we do not give any warranty (whether express or implied), guarantee or representation that it is true, accurate or complete in any respect.

As product information, ingredients, nutritional guides and dietary or allergy advice may change from time to time, we recommend that you always carefully read the product label prior to using or consuming any such products. You should not solely rely upon the information we provide and make your own assessment as to the suitability or otherwise of any given product.

Components

Ingredients

WHEAT Flour

Palm Oil

Sugar

Glucose-Fructose Syrup

Raising Agents (Calcium Phosphates, Ammonium Carbonates, Sodium Carbonates, Potassium Carbonates)

Salt

BARLEY Malt Flour

Allergy Text

MAY CONTAIN MILK.

Nutrition

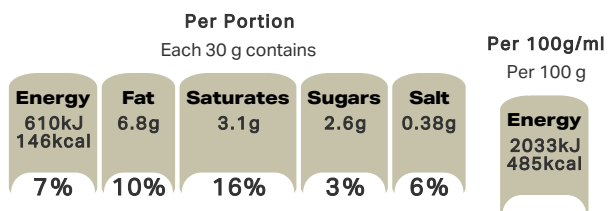
	100 g	30 g	*Reference Intakes
Energy	2033 kJ	610 kJ	8400 kJ /
	485 kcal	146 kcal	2000 kcal
Fat	23 g	6.8 g	70 g
of which Saturates	10 g	3.1 g	20 g
Carbohydrate	61 g	18 g	260 g
of which Sugars	8.6 g	2.6 g	90 g
Fibre	3.3 g	1.0 g	-
Protein	7.8 g	2.3 g	50 g
Salt	1.3 g	0.38 g	6 g

*% reference intake of an average adult (8400 kJ / 2000 kcal)

Calculated Nutrition

	per 100g	30 g
Energy (kJ)	2033	610
Energy (kcal)	485	146
Fat (g)	23	6.8
of which saturates (g)	10	3.1
Carbohydrate (g)	61	18
of which sugars (g)	8.6	2.6
Fibre (g)	3.3	1
Protein (g)	7.8	2.3
Salt (g)	1.3	0.38

Front of Pack Nutrition



% reference intake of an average adult (8400 kJ / 2000 kcal)

Reference Intake Statement

Reference Intake Statement - % reference intake of an average adult (8400 kJ / 2000 kcal)

HFSS Indicator

HFSS Indicator - Not Applicable

HFSS Food or Drink

HFSS Food or Drink - Food

HFSS Food Category

HFSS Food Category - 2 - Savoury Snacks

Product Description

Alternative Description

Supplier Preferred Product Name - Ritz Bakery The Original Cracker Box 150g

Brand

Ritz Bakery

Features

Suitable for vegans

Standardised Brand

Brand - Ritz

Regulated Product Name

Savoury crackers

Marketing

Company Name

Mondelez UK / Mondelez Ireland

Company Address

Freepost MDLZ,
Mondelez UK,
Consumer Response,
Uxbridge,
UB8 1DH.

Mondelez Ireland,
Malahide Road,
Coolock,
Dublin 5.

Third Party Logos

- Vegan Society

Brand Marketing

Mondelez international

Here at Ritz we like to keep things simple. Like our tasty little crackers made from good quality ingredients.

So keep your munchtime simple too. Just grab a friend, tear open a box and reach in together. Because life's more fun when shared!

Why not try the rest of our range

Other Information

Some settling of contents may have occurred during transport.

Further Description

BeTreatwise.net

Health & Lifestyle

Lifestyle

- Suitable for Vegans

Allergy Advice

Barley - Contains

Milk - May Contain

Wheat - Contains

Storage & Usage

Storage Type

Type

Ambient

Storage

Store in a dry place. Protect from heat.
For best before date, see base of box.

Date Marking Type

- Best Before

Brandbank Captured Pack Data

Pack Size

0.33lbs e

Numeric Size

Numeric Size - 0.33

Recycling Info

Box - Recycle

Film - Recycle with bags at large supermarket - Don't recycle at home

Pack Type

Type - Box

Recycling Scheme

- OPRL

Customer Services

Manufacturers Address

Freepost MDLZ,
Mondelez UK,
Consumer Response,
Uxbridge,
UB8 1DH.

Mondelez Ireland,
Malahide Road,
Coolock,
Dublin 5.

Return To

Freepost MDLZ,
Mondelez UK,
Consumer Response,
Uxbridge,
UB8 1DH.

Mondelez Ireland,
Malahide Road,
Coolock,
Dublin 5.

We would love to hear from you on
0800 783 7106 UK only
1800 600 858 Ireland only

Telephone Helpline

UK: 0800 783 7106
Ireland: 1800 600 858

Extended Data

Description Breakdown

Functional Name - Cracker
Variant - The Original