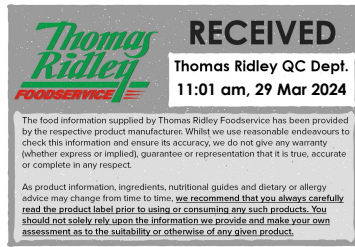


Changed Mar 29, 2024 09:39

Reviewed Mar 29, 2024 09:39

Erudus ID 96f47f4dc3f942a096c4b4b58bed78ff

Version 2.0



**Thomas Ridley**  
FOODSERVICE

**RECEIVED**  
Thomas Ridley QC Dept.  
11:01 am, 29 Mar 2024

The food information supplied by Thomas Ridley Foodservice has been provided by the respective product manufacturer. Whilst we use reasonable endeavours to check this information and ensure its accuracy, we do not give any warranty (whether express or implied), guarantee or representation that it is true, accurate or complete in any respect.

As product information, ingredients, nutritional guides and dietary or allergy advice may change from time to time, we recommend that you always carefully read the product label prior to using or consuming any such products. You should not solely rely upon the information we provide and make your own assessment as to the suitability or otherwise of any given product.



13001

# Fanta Zero Sugar Orange 500ml x12

Fanta Zero Sugar Orange 12x0.52kg

## PRODUCT DESCRIPTION

Fanta Zero Sugar Orange 500ml x12 PET

Brand	Coca-Cola
Manufacturer Product Code	414882
Product Type	Drink
Product Category	Drinks - General
Storage Type	Ambient
Erudus ID	96f47f4dc3f942a096c4b4b58bed78ff
Specification Type	Drinks



Outer Case GTIN

5017726170196



## INGREDIENTS

### Ingredient Declaration

Carbonated Water, Orange Juice From Concentrate (4%), Acids (Citric Acid, Malic Acid), Sweeteners (Cyclamates, Acesulfame-K, Sucralose, Steviol Glycosides From Stevia, Neohesperidine DC), Natural Orange Flavouring With Other Natural Flavourings, Preservative (Potassium Sorbate), Antioxidant (Ascorbic Acid), Stabiliser (Guar Gum), Colour (Carotenes).

## ALLERGENS

Product Contains:

<b>Celery/Celeriac</b>	No	<b>Mustard</b>	No
<b>Cereals Containing Gluten</b>	No	<b>Nuts (Tree)</b>	No
<b>Barley</b>	No	<b>Almond nuts</b>	No
<b>Oats</b>	No	<b>Brazil nuts</b>	No
<b>Rye</b>	No	<b>Cashew nuts</b>	No
<b>Wheat (including Spelt and Khorasan)</b>	No	<b>Hazelnuts</b>	No
<b>Crustacea</b>	No	<b>Macadamia (Queensland) nuts</b>	No
<b>Eggs</b>	No	<b>Pecan nuts</b>	No
<b>Fish</b>	No	<b>Pistachio nuts</b>	No
<b>Lupin</b>	No	<b>Walnuts</b>	No
<b>Milk</b>	No	<b>Peanuts</b>	No
<b>Molluscs</b>	No	<b>Sesame Seeds</b>	No
<b>SUPPLEMENTARY INGREDIENT INFORMATION</b>		<b>Soybeans</b>	No
<b>Palm Oil</b>	No	<b>Sulphur Dioxide and Sulphites</b>	No
<b>Hydrogenated Vegetable Oil/Fat</b>	No		
<b>GM Protein/DNA</b>	No		

ADDITIVES

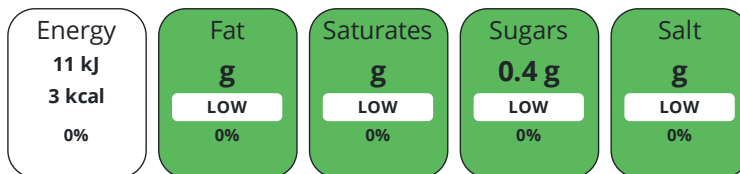
Product Contains:

<b>Artificial Antioxidants</b>	No	<b>Artificial Flavourings</b>	No
<b>Artificial Colours</b>	No	<b>Artificial Preservatives</b>	Yes
<b>Artificial Flavour Enhancers</b>	No	<b>Artificial Sweeteners</b>	Yes
<b>Vegan Diet</b>	Suitable for	<b>Vegetarian Diet</b>	Suitable for
<b>Halal Diet</b>	Suitable for	<b>Kosher Diet</b>	Suitable for

DIET  
SUITABILITY

NUTRITIONAL  
INFORMATION

Each 100g/ml portion contains:



of your reference intake.

Typical values per 100g/ml : Energy 3kcal / 11kj

Nutrient	per 100ml	RI per 100ml
<b>Energy (kJ)</b>	11 kJ	0%
<b>Energy (kcal)</b>	3 kcal	0%
<b>Fat</b>	0 g	0%
<b>of which Saturates</b>	0 g	0%
<b>Carbohydrate</b>	0.4 g	0%
<b>of which Sugars</b>	0.4 g	0%
<b>Protein</b>	0 g	0%
<b>Salt</b>	0 g	0%

SUPPLEMENTARY  
NUTRITIONAL  
INFORMATION

HANDLING &  
STORAGE  
INFORMATION

**Directions For Use**

Best served chilled.

**Storage Instructions**

Store on a cool dry place.

<b>Shelf Life from Time of Production</b>	150 Days	<b>Exempt From Shelf Life Labelling</b>	No
---	----------	---	----

ORIGIN

<b>Product Country of Origin/Place of Provenance</b>	Great Britain
--	---------------

PRODUCT  
CHARACTERISTICS  
CONFIGURATION

Standards Testing	
Case Configuration	Inner Pack Configuration

<b>Total Quantity of Inner Components in Outer Case</b>	12 Units
<b>Is the Outer Case Splittable?</b>	No

PRODUCT  
WEIGHTS

Inner Component	
<b>Inner Component Weight</b>	0.52 kg
Outer Case	
<b>Outer Case Gross Weight</b>	6.29 kg
<b>Outer Case Net Weight</b>	6 kg

PRODUCT DIMENSIONS

Inner Component	
<b>Inner Component Depth</b>	66 mm
<b>Inner Component Width</b>	66 mm
<b>Inner Component Height</b>	233 mm
Outer Case	
<b>Outer Case Depth</b>	262 mm
<b>Outer Case Width</b>	197 mm
<b>Outer Case Height</b>	233 mm

PALLET INFORMATION

<b>Quantity of Cases Per Pallet Layer</b>	24 Cases	<b>Pallet Height</b>	1.56 MTR
<b>Quantity of Layers Per Pallet</b>	6 Layers	<b>Pallet Gross Weight</b>	935.36 kg
<b>Quantity of Cases Per Pallet</b>	144 Cases		

PACKAGING

Inner Component Packaging						
Type	Materials	Weight	Recycled Plastic %	Recyclable	Returnable	Composite
Bottle	Plastic	22.13 g	- %			
Outer Case Packaging						
Type	Materials	Weight	Recycled Plastic %	Recyclable	Returnable	Composite
Case	Plastic	17.69 g	- %			
Case	Paper/Cardboard	0.64 g	- %			

OTHER INFORMATION CONTACT INFORMATION

Address	Technical Contact
Coca-Cola	Data Queries
Coca-Cola Europacific Partners Great Britain Limited	npidataexchange@ccep.com
Pemberton House, Bakers Road	
Uxbridge	
UB8 1EZ	
United Kingdom	
<b>P: (Phone) 08081000000</b>	

The information on the [Erudus System](#) has been supplied by the manufacturers of the products and, whilst the owners of the Erudus System take steps to ensure the information is regularly updated, they give no warranty and no guarantee that the information is accurate. Product information and ingredients may change, please always read product labels carefully in addition to using the information provided by Erudus.

We do not accept liability for any inaccuracies or incorrect information contained on this site. Please visit <http://www.erudus.com/terms-and-conditions> for full terms and conditions.