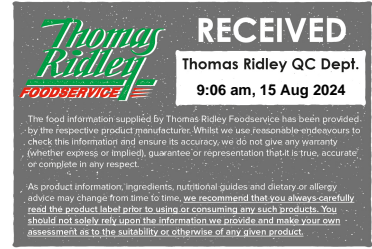


Changed Jul 24, 2024 15:46

Reviewed Jul 24, 2024 15:46

Erudus ID 6f90b701ca6c4c0180f94b362615d3ea

Version 2.0



Ubley Peach Low Fat Yogurt in 5Kg Bucket

Peach Low Fat Yogurt 1x5kg

PRODUCT DESCRIPTION

A low fat sugar sweetened yogurt with peach conserve and added preservative.

Brand	Yeo Valley Organic
Manufacturer Product Code	AUB006
Product Type	Food
Product Category	Yoghurt and Yoghurt Drinks
Storage Type	Chilled
Erudus ID	6f90b701ca6c4c0180f94b362615d3ea
Specification Type	Dairy
Outer Case GTIN	5014067433720



INGREDIENTS

Ingredient Declaration

Low Fat Yogurt (**MILK**), Peach (8%), Sugar, Peach Puree from Concentrate, Modified Maize Starch, Natural Flavourings, Acidity Regulators (Citric Acid, Trisodium Citrate), Preservative (Potassium Sorbate), Natural Colours (Paprika Extract, Curcumin).

ALLERGENS

Product Contains:

Celery/Celeriac	No	Mustard	No
Cereals Containing Gluten	No	Nuts (Tree)	No
Barley	No	Almond nuts	No
Oats	No	Brazil nuts	No
Rye	No	Cashew nuts	No
Wheat (including Spelt and Khorasan)	No	Hazelnuts	No
Crustacea	No	Macadamia (Queensland) nuts	No
Eggs	No	Pecan nuts	No
Fish	No	Pistachio nuts	No
Lupin	No	Walnuts	No
Milk	Yes	Peanuts	No
Molluscs	No	Sesame Seeds	No
		Soybeans	No
		Sulphur Dioxide and Sulphites	No

Additional Allergen Information

For allergens, see ingredients in BOLD. Gluten Free.

SUPPLEMENTARY INGREDIENT INFORMATION

Palm Oil	No
Hydrogenated Vegetable Oil/Fat	No
GM Protein/DNA	No

ADDITIVES

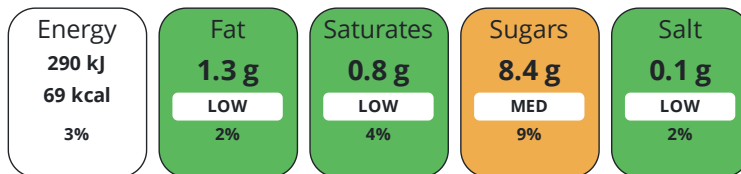
Product Contains:

Artificial Antioxidants	No	Artificial Flavourings	No
Artificial Colours	No	Artificial Preservatives	No
Artificial Flavour Enhancers	No	Artificial Sweeteners	No
Vegetarian Diet	Suitable for	Halal Diet	No
Kosher Diet	No		

DIET SUITABILITY

NUTRITIONAL INFORMATION

Each 100g/ml portion contains:



of your reference intake.

Typical values per 100g/ml : Energy 69kcal / 290kj

Nutrient	per 100g	RI per 100g
Energy (kJ)	290 kJ	3%
Energy (kcal)	69 kcal	3%
Fat	1.3 g	2%
of which Saturates	0.8 g	4%
Carbohydrate	10.2 g	4%
of which Sugars	8.4 g	9%
of which Starch	0.6 g	
Fibre	< 0.5 g	
Protein	4.1 g	8%
Salt	0.1 g	2%

SUPPLEMENTARY NUTRITIONAL INFORMATION

Fibre Type	Fibre AOAC
-------------------	------------

HFSS (HIGH IN FAT, SALT AND SUGAR)

HFSS Status	No
--------------------	----

HANDLING & STORAGE INFORMATION

Directions For Use

Ready for use.

Storage Instructions

Keep Refrigerated, 1 degree C Min, 5 Degree C max. DO NOT FREEZE. Once opened, use within 3 days.

Shelf Life from Time of Production	30 Days
---	---------

ACCREDITATIONS/ CERTIFICATIONS/ ASSURANCE SCHEMES ORIGIN

BRCGS Certified	ISO 14001 (Environmental Management)
------------------------	---

Product Country of Origin/Place of Provenance	United Kingdom
--	----------------

Additional Origin Details

Packed in the UK using British milk.

PRODUCT CHARACTERISTICS

Standards Testing			
Do you undertake trend analysis of microbiological results?	Yes	Is shelf life testing undertaken?	Yes

Microbiological Standards

Organism	Description	Frequency	Target	Maximum	Sample (g or ml)
E. Coli (cfu/g or ml)	Positive enteros only	Every Batch	<20	20	1
Enterobacteriaceae (cfu/g or ml)		Every Batch	<10	100	1
Yeast (cfu/g or ml)		Every Batch	<10	50	1
Moulds (cfu/g or ml)		Every Batch	<1	1	1

Analytical Standards

Test	Description	Frequency	Target	Range	Sample (g or ml)
Fat Content (%)	Milk fat of yogurt base	Every Batch	=1.3	1 to 1.5	100
Milk Solids (%)	Milk solids of yogurt base	Every Batch	=20.7	20.2 to 21.2	100
pH	pH of yogurt base	Every Batch	<4.5	3.8 to 4.5	100

CONFIGURATION

Case Configuration

Inner Pack Configuration

Total Quantity of Inner Components in Outer Case 1 Units

PRODUCT WEIGHTS

Inner Component

Variable Weight Consumer Item No
Inner Component Weight 5 kg

Outer Case

Outer Case Gross Weight 5.2 kg
Outer Case Net Weight 5 kg

PRODUCT DIMENSIONS

Inner Component

Inner Component Depth 221 mm
Inner Component Width 221 mm
Inner Component Height 205 mm

Outer Case

Outer Case Depth 221 mm
Outer Case Width 221 mm
Outer Case Height 205 mm

PALLET INFORMATION

Quantity of Cases Per Pallet Layer 20 Cases
Quantity of Layers Per Pallet 5 Layers
Quantity of Cases Per Pallet 100 Cases
Pallet Height 1.14 MTR

PACKAGING

Inner Component Packaging

Type	Materials	Weight	Recycled Plastic %	Recyclable	Returnable	Composite
Tub	Plastic	205.5 g	- %			
Tub	Paper/Cardboard	0.8 g	- %			

OTHER INFORMATION

Commodity Code 0403209100
Identification/Health Marks GB UW 020 GB SG 014

CONTACT
INFORMATION

Address

Yeo Valley Organic
Yeo Valley HQ, Rhodyate
Blagdon
North Somerset
BS40 7YE
England

P: (Phone) 01761 461430

Complaints Contact

Yeo Valley Team
hello@yeovalley.co.uk

P: (Phone) 01761 462 798

Technical Contact

Diego Alonso
Lead Specifications Technologist
Diego.Alonso@yeovalley.co.uk

Commercial Contact

Bobby Houghton-Brown
National Account Manager
Bobby.houghton-brown@yeovalley.co.uk

The information on the [Erudus System](#) has been supplied by the manufacturers of the products and, whilst the owners of the Erudus System take steps to ensure the information is regularly updated, they give no warranty and no guarantee that the information is accurate. Product information and ingredients may change, please always read product labels carefully in addition to using the information provided by Erudus.

We do not accept liability for any inaccuracies or incorrect information contained on this site.
Please visit <http://www.erudus.com/terms-and-conditions> for full terms and conditions.