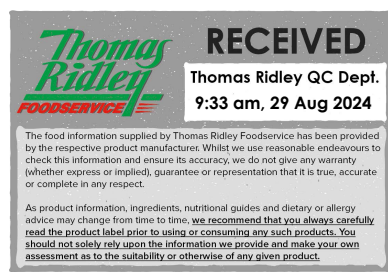


Changed Aug 29, 2024 07:57

Reviewed Aug 29, 2024 07:57

Erudus ID 3373283956a94ba893cf7e14bc578d00

Version 2.0



Thomas Ridley
FOODSERVICE

RECEIVED
Thomas Ridley QC Dept.
9:33 am, 29 Aug 2024

The food information supplied by Thomas Ridley Foodservice has been provided by the respective product manufacturers. Whilst we use reasonable endeavours to check this information and ensure its accuracy, we do not give any warranty (whether express or implied), guarantee or representation that it is true, accurate or complete in any respect.

As product information, ingredients, nutritional guides and dietary or allergy advice may change from time to time, we recommend that you always carefully read the product label prior to using or consuming any such products. You should not solely rely upon the information we provide and make your own assessment as to the suitability or otherwise of any given product.



13115

VEGAN AND GLUTEN FREE CHOCOLATE AND CHERRY TART

Vegan And Gluten Free Chocolate And Cherry Tart

PRODUCT DESCRIPTION

Crisp Gluten free sweet pastry case, with a layer of red cherry compote, topped with a vegan Belgian chocolate ganache

Brand	Waldrons Patisserie Ltd
Manufacturer Product Code	PS2005GF
Product Type	Food
Product Category	Desserts
Storage Type	Frozen
Erudus ID	3373283956a94ba893cf7e14bc578d00
Specification Type	Generic



Outer Case GTIN 5060667010724



INGREDIENTS

Ingredient Declaration

Chocolate Ganache(65%) Icing mix (50%) (Water, Sugar, Palm Kernel Oil, Palm Oil, Emulsifiers (Polysorbate 60, polyglycerol esters of fatty acids, sunflower lecithin), Stabilisers (Hydroxypropyl methyl cellulose, Sodium Alginate), Salt, Flavourings, Acidity Regulator (Sodium Citrate), Colour (Beta Carotene)). Dark Chocolate buttons(33%)(cocoa mass(46%), sugar cocoa butter(9%), emulsifier(SOYA lecithin), flavour), Cocoa. Pastry Case(28%) Gluten free flour(Brown rice flour, Potato starch, maizeflour, Buckwheat flour), Margarine (vegetable oils(palm, rapeseed), water, salt), Sugar, Water, Vegetable Shortening (palm oil, rapeseed oil), Xanthan gum(E415)Cherry filling(19%)(red cherry(38%), water, sugar, modified maize starch, citric acid, flavour, preservative (E202))

ALLERGENS

Product Contains:

Celery/Celериac	No	Mustard	No
Cereals Containing Gluten	No	Nuts (Tree)	May Contain
Barley	No	Almond nuts	May Contain
Oats	No	Brazil nuts	No
Rye	No	Cashew nuts	No
Wheat (including Spelt and Khorasan)	No	Hazelnuts	No
Crustacea	No	Macadamia (Queensland) nuts	No
Eggs	No	Pecan nuts	May Contain
Fish	No	Pistachio nuts	No
Lupin	No	Walnuts	May Contain
Milk	May Contain	Peanuts	No
Molluscs	No	Sesame Seeds	No
		Soybeans	Yes
		Sulphur Dioxide and Sulphites	No

Risk Source:

Additional Allergen Information

May contain milk due to cross contamination at Chocolate manufacturer, chocolate is labelled as suitable for Vegans.

SUPPLEMENTARY
INGREDIENT
INFORMATION

Palm Oil	Yes
Hydrogenated Vegetable Oil/Fat	No
GM Protein/DNA	No

ADDITIVES

Product Contains:

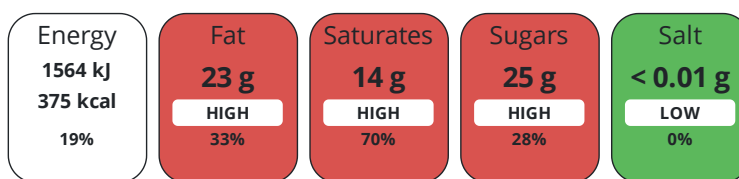
Artificial Antioxidants	No	Artificial Flavourings	No
Artificial Colours	No	Artificial Preservatives	No
Artificial Flavour Enhancers	No	Artificial Sweeteners	No

DIET
SUITABILITY

Vegan Diet	Suitable for	Vegetarian Diet	Suitable for
Halal Diet	No	Kosher Diet	No

NUTRITIONAL
INFORMATION

Each 100g/ml portion contains:



of your reference intake.

Typical values per 100g/ml : Energy 375kcal / 1564kJ

Nutrient	per 100g	RI per 100g	per 140g serving	RI per 140g serving
Energy (kJ)	1564 kJ	19%	2189.6 kJ	26%
Energy (kcal)	375 kcal	19%	525 kcal	26%
Fat	23 g	33%	32.2 g	46%
of which Saturates	14 g	70%	19.6 g	98%
Carbohydrate	39 g	15%	54.6 g	21%
of which Sugars	25 g	28%	35 g	39%
Fibre	2.8 g		3.9 g	
Protein	2.5 g	5%	3.5 g	7%
Salt	< 0.01 g	0%	-	
Serving Size	140 g			

SUPPLEMENTARY
NUTRITIONAL
INFORMATION

HANDLING &
STORAGE
INFORMATION

Directions For Use

Remove from outer packaging, store in original box and defrost in refrigerator, serve from chilled and consume within 48 hours

Storage Instructions

store at -18 or below

Shelf Life from Time of Production 540 Days

ACCREDITATIONS/
CERTIFICATIONS/
ASSURANCE
SCHEMES
ORIGIN

SALSA (Safe & Local Supplier Approval)

Product Country of Origin/Place of United Kingdom

Provenance

PRODUCT
CHARACTERISTICS

Standards Testing

	Do you undertake trend analysis of microbiological results?	No	Is shelf life testing undertaken?		Yes		
	Microbiological Standards						
	Organism	Description	Frequency	Target	Maximum	Sample (g or ml)	
	E. Coli (cfu/g or ml)		Quarterly	<10	10	25	
	Enterobacteriaceae (cfu/g or ml)		Quarterly	<100	1000	25	
	Listeria Monocytogenes (cfu/g or ml)		Quarterly	<0	0	25	
	Staphylococcus Aureus (cfu/g or ml)		Quarterly	<10	100	25	
	Salmonella (cfu/g or ml)		Quarterly	<0	0	25	
CONFIGURATION	Case Configuration		Inner Pack Configuration				
	Total Quantity of Inner Components in Outer Case	1 Units					
	Is the Outer Case Splittable?	No					
PRODUCT WEIGHTS	Inner Component						
	Variable Weight Consumer Item	Yes					
	Outer Case						
	Outer Case Gross Weight	1.7 kg					
	Outer Case Net Weight	1.45 kg					
PRODUCT DIMENSIONS	Inner Component						
	Inner Component Depth	0 mm					
	Inner Component Width	0 mm					
	Inner Component Height	0 mm					
	Outer Case						
	Outer Case Depth	291 mm					
	Outer Case Width	291 mm					
	Outer Case Height	71 mm					
PALLET INFORMATION	Quantity of Cases Per Pallet Layer	12 Cases	Pallet Type	UK Standard Pallet			
	Quantity of Layers Per Pallet	15 Layers	Pallet Height	1.03 MTR			
	Quantity of Cases Per Pallet	180 Cases	Pallet Gross Weight	337.5 kg			
PACKAGING	Inner Component Packaging						
	Type	Materials	Weight	Recycled Plastic %	Recyclable	Returnable	Composite
	Bag	Plastic	10 g	- %			
	Bag	Paper/Cardboard	245 g	- %			
	Bag	Aluminium	10 g	- %			
	Outer Case Packaging						
	Type	Materials	Weight	Recycled Plastic %	Recyclable	Returnable	Composite
	Case	Plastic	5 g	- %			
	Case	Paper/Cardboard	245 g	- %			

Transport Packaging

Type	Materials	Weight	Recycled Plastic %	Recyclable	Returnable	Composite
Other	Plastic	500 g	- %			
Other	Paper/Cardboard	1000 g	- %			
Other	Wood	30000 g	- %			

OTHER INFORMATION

Manufacturer Comments

Minimum order quantity of 180 cases can be configured from mixed products to achieve the minimum 180.

CONTACT INFORMATION

Address

Waldrons Patisserie Ltd
Units 1-5
Mardle Way
Buckfastleigh
Devon
TQ11 0NR
England

P: (Phone) 01364 643871

The information on the [Erudus System](#) has been supplied by the manufacturers of the products and, whilst the owners of the Erudus System take steps to ensure the information is regularly updated, they give no warranty and no guarantee that the information is accurate. Product information and ingredients may change, please always read product labels carefully in addition to using the information provided by Erudus.

We do not accept liability for any inaccuracies or incorrect information contained on this site.
Please visit <http://www.erudus.com/terms-and-conditions> for full terms and conditions.