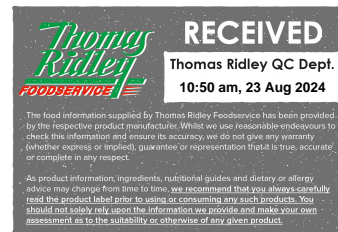


Changed Aug 20, 2024 14:21

Reviewed Aug 20, 2024 14:21

Erudus ID 283d3b7991a74b4c9d8e04310f24b461

Version 2.0



CHOCOLATE DIPPED SALTED CARAMEL PROFITEROLES (100 PER BOX)

Chocolate Dipped Salted Caramel Profiteroles

PRODUCT DESCRIPTION

Chocolate covered choux pastry buns filled with dairy cream and salted caramel

Brand	Waldrons Patisserie Ltd
Manufacturer Product Code	0007 SC
Product Type	Food
Product Category	Desserts
Storage Type	Frozen
Erudus ID	283d3b7991a74b4c9d8e04310f24b461
Specification Type	Generic



Outer Case GTIN 5060667010038



INGREDIENTS

Ingredient Declaration

Sugar, Skimmed MILK, EGGS, Palm Oil, Vegetable Fats (Coconut, Palm Kernel), WHEAT Flour, Caramel (5.5%), Sweetened Condensed MILK (Skimmed MILK, Sugar), Glucose Syrup, Starch, Cream (MILK) (2.6%), Skimmed MILK Powder, Defatted Cocoa Powder, Anhydrous MILK Fat, Salt, <1%, Butter (MILK), Whole MILK Powder, Emulsifiers (E322, E471), Natural Vanilla Flavouring, Thickener (E440), Paprika Oil Extract, Stabiliser (E407)

ALLERGENS

Product Contains:

Celery/Celeryiac	No
Cereals Containing Gluten	Yes
Barley	No
Oats	No
Rye	No
Wheat (including Spelt and Khorasan)	Yes
Crustacea	No
Eggs	Yes
Fish	No
Lupin	No
Milk	Yes
Molluscs	No

Mustard	No
Nuts (Tree)	May Contain
Almond nuts	May Contain
Brazil nuts	No
Cashew nuts	No
Hazelnuts	May Contain
Macadamia (Queensland) nuts	No
Pecan nuts	No
Pistachio nuts	No
Walnuts	No
Peanuts	May Contain
Sesame Seeds	No
Soybeans	No
Sulphur Dioxide and Sulphites	No

Risk Source:

SUPPLEMENTARY INGREDIENT INFORMATION

Palm Oil	Yes
Hydrogenated Vegetable Oil/Fat	No
GM Protein/DNA	No

ADDITIVES

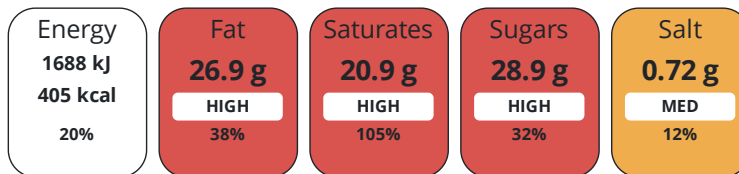
Product Contains:

Artificial Antioxidants	No	Artificial Flavourings	No
Artificial Colours	No	Artificial Preservatives	No
Artificial Flavour Enhancers	No	Artificial Sweeteners	No
Vegan Diet	No	Vegetarian Diet	No
Halal Diet	No	Kosher Diet	No

DIET SUITABILITY

NUTRITIONAL INFORMATION

Each 100g/ml portion contains:



of your reference intake.

Typical values per 100g/ml : Energy 405kcal / 1688kJ

Nutrient	per 100g	RI per 100g
Energy (kJ)	1688 kJ	20%
Energy (kcal)	405 kcal	20%
Fat	26.9 g	38%
of which Saturates	20.9 g	105%
Carbohydrate	36.3 g	14%
of which Sugars	28.9 g	32%
Protein	4.3 g	9%
Salt	0.72 g	12%

SUPPLEMENTARY NUTRITIONAL INFORMATION

HANDLING & STORAGE INFORMATION

Directions For Use

Take the product out of the packaging and defrost at room temperature for 30 minutes or 2 hours in the refrigerator, after defrost the product must be kept chilled and used within 3 days

Storage Instructions

store at -18 or below

Shelf Life from Time of Production 540 Days

ACCREDITATIONS/ CERTIFICATIONS/ ASSURANCE SCHEMES ORIGIN

Roundtable of Sustainable Palm Oil (RSPO) **SALSA (Safe & Local Supplier Approval)**

Product Country of Origin/Place of Provenance Netherlands (the)

PRODUCT CHARACTERISTICS

Standards Testing

Do you undertake trend analysis of microbiological results?	Yes	Is shelf life testing undertaken?	Yes
--	-----	--	-----

Microbiological Standards

Organism	Description	Frequency	Target	Maximum	Sample (g or ml)
Enterobacteriaceae (cfu/g or ml)		Monthly	<100	1000	25

Organism	Description	Frequency	Target	Maximum	Sample (g or ml)
Staphylococcus Aureus (cfu/g or ml)		Monthly	<10	100	25
Total Viable Count (TVC) (cfu/g or ml)		Monthly	<10000	100000	25
Salmonella (cfu/g or ml)		Monthly	=0	0	25

CONFIGURATION

Case Configuration Inner Pack Configuration

Total Quantity of Inner Components in 100 Units

Outer Case

Is the Outer Case Splittable? No

PRODUCT WEIGHTS

Inner Component

Variable Weight Consumer Item Yes

Outer Case

Outer Case Gross Weight 2.2 kg

Outer Case Net Weight 2 kg

PRODUCT DIMENSIONS

Inner Component

Inner Component Depth 0 mm

Inner Component Width 0 mm

Inner Component Height 0 mm

Outer Case

Outer Case Depth 335 mm

Outer Case Width 223 mm

Outer Case Height 136 mm

PALLET INFORMATION

Quantity of Cases Per Pallet Layer 15 Cases **Pallet Type** UK Standard Pallet

Quantity of Layers Per Pallet 12 Layers **Pallet Height** 1.8 MTR

Quantity of Cases Per Pallet 180 Cases **Pallet Gross Weight** 476.4 kg

PACKAGING

Inner Component Packaging

Type	Materials	Weight	Recycled Plastic %	Recyclable	Returnable	Composite
Box	Plastic	30 g	- %			
Box	Paper/Cardboard	185 g	- %			

Outer Case Packaging

Type	Materials	Weight	Recycled Plastic %	Recyclable	Returnable	Composite
Case	Plastic	30 g	- %			
Case	Paper/Cardboard	185 g	- %			

Transport Packaging

Type	Materials	Weight	Recycled Plastic %	Recyclable	Returnable	Composite
Other	Plastic	500 g	- %			
Other	Paper/Cardboard	1000 g	- %			
Other	Wood	30000 g	- %			

OTHER INFORMATION

Manufacturer Comments

minimum order quantity of 180 can be made up of mixed cases

CONTACT
INFORMATION

Address

Waldrons Patisserie Ltd
Units 1-5
Mardle Way
Buckfastleigh
Devon
TQ11 0NR
England

P: (Phone) 01364 643871

The information on the [Erudus System](#) has been supplied by the manufacturers of the products and, whilst the owners of the Erudus System take steps to ensure the information is regularly updated, they give no warranty and no guarantee that the information is accurate. Product information and ingredients may change, please always read product labels carefully in addition to using the information provided by Erudus.

We do not accept liability for any inaccuracies or incorrect information contained on this site.
Please visit <http://www.erudus.com/terms-and-conditions> for full terms and conditions.