

Changed Aug 29, 2024 12:29

Reviewed Aug 29, 2024 12:29

Erudus ID e57e4248082c46d0bc336a3c854a4e5d

Version 2.0

Thomas Ridley QC Dept.  
3:06 pm, 29 Aug 2024

The food information supplied by Thomas Ridley Foodservice has been provided by the respective product manufacturers. Whilst we use reasonable endeavours to check this information and ensure its accuracy, we do not give any warranty (whether express or implied), guarantee or representation that it is true, accurate or complete in any respect.

As product information, ingredients, nutritional guides and dietary or allergy advice may change from time to time, we recommend that you always carefully read the product label prior to using or consuming any such products. You should not solely rely upon the information we provide and make your own assessment as to the suitability or otherwise of any given product.



13117

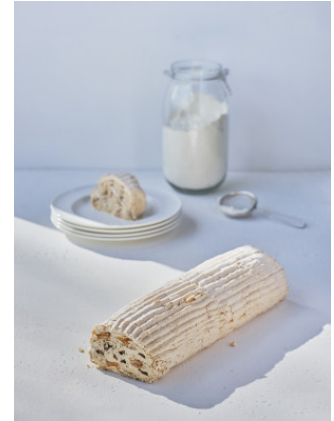
# GLUTEN FREE SALTED CARAMEL CAPPUCINO MERINGUE ROULADE 16ptn

Gluten Free Salted Caramel Cappucino Meringue Roulade

## PRODUCT DESCRIPTION

Gluten free meringue roulade, with salted caramel and a cappuccino flavoured crème, dusted with cocoa powder

Brand	Waldrons Patisserie Ltd
Manufacturer Product Code	0082
Product Type	Food
Product Category	Desserts
Storage Type	Frozen
Erudus ID	e57e4248082c46d0bc336a3c854a4e5d
Specification Type	Generic



Outer Case GTIN 5060667011103



## INGREDIENTS

### Ingredient Declaration

Crème filling (57%) Icing mix (50%) (Water, Sugar, Palm Kernel Oil, Palm Oil, Emulsifiers (Polysorbate 60, polyglycerol esters of fatty acids, sunflower lecithin), Stabilisers (Hydroxypropyl methyl cellulose, Sodium Alginate), Salt, Flavourings, Acidity Regulator (Sodium Citrate), Colour (Beta Carotene)), Fresh whipping Cream (MILK)(10%), Whipping Crème(6%)(Reconstituted Skimmed MILK Powder, Palm Kernel Oil, Water, Palm Oil, Modified Maize Starch, Flavourings (contain MILK), MILK Protein, Thickener (E415), Acidity Regulator (E331, E340), Emulsifiers (E471, E322, E435), Salt, Colour (Beta Carotene)), Cream Cheese (MILK) (11%) (soft Cheese (97%), Salt, Native Starch, Stabiliser (E410, E415)), Salted Caramel (10%) (Sugar, Glucose Syrup, Sweetened Condensed MILK (MILK, Sugar, Lactose (MILK)), Water, Unsalted Butter (MILK), Golden Syrup (Partially Inverted Refiners Syrup), Palm Oil, Salt, Emulsifiers (E322, E491), Natural Flavouring, Dark Chocolate Curls (3%) (Sugar, Cocoa Mass (44%), Cocoa Butter (6%), Flavour, Emulsifier (SOYA Lecithin)), Coffee Granules (1.5%)(100% Arabica Coffee Beans), Water, Meringue (43%) Caster sugar, liquid EGG white (EGG albumen, Acidity Regulator (E270), Stabiliser (E520)), Dried EGG albumen (stabiliser (E466, E412), Acidity Regulator (E330)))

ALLERGENS

Product Contains:

<b>Celery/Celeriac</b>	No
<b>Cereals Containing Gluten</b>	No
<b>Barley</b>	No
<b>Oats</b>	No
<b>Rye</b>	No
<b>Wheat (including Spelt and Khorasan)</b>	No
<b>Crustacea</b>	No
<b>Eggs</b>	Yes
<b>Fish</b>	No
<b>Lupin</b>	No
<b>Milk</b>	Yes
<b>Molluscs</b>	No

<b>Mustard</b>	No
<b>Nuts (Tree)</b>	May Contain
<b>Almond nuts</b>	May Contain
<b>Brazil nuts</b>	May Contain
<b>Cashew nuts</b>	May Contain
<b>Hazelnuts</b>	May Contain
<b>Macadamia (Queensland) nuts</b>	May Contain
<b>Pecan nuts</b>	May Contain
<b>Pistachio nuts</b>	May Contain
<b>Walnuts</b>	May Contain
<b>Peanuts</b>	No
<b>Sesame Seeds</b>	No
<b>Soybeans</b>	Yes
<b>Sulphur Dioxide and Sulphites</b>	No

Risk Source:

SUPPLEMENTARY INGREDIENT INFORMATION

<b>Palm Oil</b>	Yes
<b>Hydrogenated Vegetable Oil/Fat</b>	No
<b>GM Protein/DNA</b>	No

ADDITIVES

Product Contains:

<b>Artificial Antioxidants</b>	No
<b>Artificial Colours</b>	No
<b>Artificial Flavour Enhancers</b>	No

<b>Artificial Flavourings</b>	No
<b>Artificial Preservatives</b>	No
<b>Artificial Sweeteners</b>	No

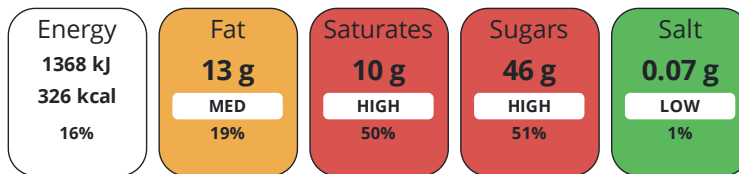
DIET SUITABILITY

<b>Vegan Diet</b>	No
<b>Halal Diet</b>	No

<b>Vegetarian Diet</b>	Suitable for
<b>Kosher Diet</b>	No

NUTRITIONAL INFORMATION

Each 100g/ml portion contains:



of your reference intake.

Typical values per 100g/ml : Energy 326kcal / 1368kJ

Nutrient	per 100g	RI per 100g	per 75g serving	RI per 75g serving
<b>Energy (kJ)</b>	1368 kJ	16%	1026 kJ	12%
<b>Energy (kcal)</b>	326 kcal	16%	244.5 kcal	12%
<b>Fat</b>	13 g	19%	9.8 g	14%
of which Saturates	10 g	50%	7.5 g	38%
<b>Carbohydrate</b>	48 g	18%	36 g	14%
of which Sugars	46 g	51%	34.5 g	38%
<b>Fibre</b>	< 0.5 g		0.4 g	
<b>Protein</b>	3.5 g	7%	2.6 g	5%
<b>Salt</b>	0.07 g	1%	0.1 g	2%
<b>Serving Size</b>	75 g			

SUPPLEMENTARY  
NUTRITIONAL  
INFORMATION

HANDLING &  
STORAGE  
INFORMATION

**Directions For Use**

Serve straight from the freezer, or defrost fully in a refrigerator and serve from chilled, consume within 48 hrs

**Storage Instructions**

store at -18c or below

**Shelf Life from Time of Production** 540 Days

**SALSA (Safe & Local Supplier Approval)**

ACCREDITATIONS/  
CERTIFICATIONS/  
ASSURANCE  
SCHEMES  
ORIGIN

**Product Country of Origin/Place of** United Kingdom

**Provenance**

PRODUCT  
CHARACTERISTICS

Standards Testing

**Do you undertake trend analysis of microbiological results?** Yes **Is shelf life testing undertaken?** Yes

Microbiological Standards

Organism	Description	Frequency	Target	Maximum	Sample (g or ml)
Enterobacteriaceae (cfu/g or ml)		Monthly	<100	1000	25
Listeria Monocytogenes (cfu/g or ml)		Monthly	=0	0	25
Staphylococcus Aureus (cfu/g or ml)		Monthly	<10	100	25
Total Viable Count (TVC) (cfu/g or ml)		Monthly	<10000	5000000	25
Salmonella (cfu/g or ml)		Monthly	=0	0	25

CONFIGURATION

Case Configuration

Inner Pack Configuration

**Total Quantity of Inner Components in Outer Case** 1 Units

**Is the Outer Case Splittable?** No

PRODUCT  
WEIGHTS

Inner Component

**Variable Weight Consumer Item** Yes

Outer Case

**Outer Case Gross Weight** 1.45 kg

**Outer Case Net Weight** 1.2 kg

PRODUCT  
DIMENSIONS

Inner Component

**Inner Component Depth** 0 mm

**Inner Component Width** 0 mm

**Inner Component Height** 0 mm

Outer Case

**Outer Case Depth** 406 mm

**Outer Case Width** 152 mm

**Outer Case Height** 100 mm

PALLET  
INFORMATION

**Quantity of Cases Per Pallet Layer** 16 Cases

**Pallet Type** UK Standard Pallet

**Quantity of Layers Per Pallet** 12 Layers

**Pallet Height** 1.82 MTR

**Quantity of Cases Per Pallet** 192 Cases

**Pallet Gross Weight** 310 kg

PACKAGING

Inner Component Packaging

Type	Materials	Weight	Recycled Plastic %	Recyclable	Returnable	Composite
Box	Plastic	47 g	- %			
Box	Paper/Cardboard	203 g	- %			

Outer Case Packaging

Type	Materials	Weight	Recycled Plastic %	Recyclable	Returnable	Composite
Case	Plastic	47 g	- %			
Case	Paper/Cardboard	203 g	- %			

Transport Packaging

Type	Materials	Weight	Recycled Plastic %	Recyclable	Returnable	Composite
Other	Plastic	500 g	- %			
Other	Paper/Cardboard	1000 g	- %			
Other	Wood	30000 g	- %			

OTHER INFORMATION

**Manufacturer Comments**

Minimum order quantity can be configured from mixed products

CONTACT INFORMATION

Address

Waldrons Patisserie Ltd  
 Units 1-5  
 Mardle Way  
 Buckfastleigh  
 Devon  
 TQ11 0NR  
 England

P: (Phone) 01364 643871

The information on the [Erudus System](#) has been supplied by the manufacturers of the products and, whilst the owners of the Erudus System take steps to ensure the information is regularly updated, they give no warranty and no guarantee that the information is accurate. Product information and ingredients may change, please always read product labels carefully in addition to using the information provided by Erudus.

We do not accept liability for any inaccuracies or incorrect information contained on this site. Please visit <http://www.erudus.com/terms-and-conditions> for full terms and conditions.