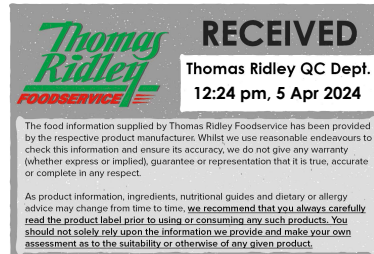


Changed Apr 05, 2024 07:37

Reviewed Apr 05, 2024 07:37

Erudus ID 451a2985e9d44ed69f8f17e10bd50f6b

Version 2.0



13119

Heinz Macaroni Cheese (24) 400g

Macaroni Cheese 24x400g

PRODUCT DESCRIPTION

Macaroni cheese made with a creamy cheddar cheese sauce.

Brand	H.J. Heinz
Manufacturer Product Code	71013718
Product Type	Food
Product Category	Pasta, Rice and Noodles
Storage Type	Ambient
Erudus ID	451a2985e9d44ed69f8f17e10bd50f6b
Specification Type	Generic



INGREDIENTS

Ingredient Declaration

Macaroni (39%, Water, Durum WHEAT Semolina), Water, Skimmed MILK, Cheddar Cheese (3%, contains MILK), Reduced Fat Cheese (2%, contains MILK), Cornflour, Flavouring (contains MILK), Modified Cornflour, Rapeseed Oil, MUSTARD, Salt, Stabiliser - Polyphosphates and Sodium Phosphates, Sugar, Colour - Beta-carotene

ALLERGENS

Product Contains:

Celery/Celery	No	Mustard	Yes
Cereals Containing Gluten	Yes	Nuts (Tree)	No
Barley	No	Almond nuts	No
Oats	No	Brazil nuts	No
Rye	No	Cashew nuts	No
Wheat (including Spelt and Khorasan)	Yes	Hazelnuts	No
Crustacea	No	Macadamia (Queensland) nuts	No
Eggs	May Contain	Pecan nuts	No
Fish	No	Pistachio nuts	No
Lupin	No	Walnuts	No
Milk	Yes	Peanuts	No
Molluscs	No	Sesame Seeds	No
		Soybeans	No
		Sulphur Dioxide and Sulphites	No

Risk Source:

SUPPLEMENTARY INGREDIENT INFORMATION

Palm Oil	No	Alcoholic Strength %Vol (ABV)	0 % Vol
Hydrogenated Vegetable Oil/Fat	No		
GM Protein/DNA	No		

ADDITIVES

Product Contains:

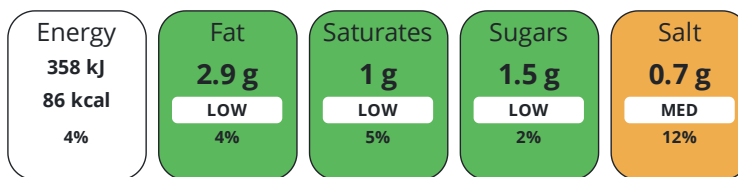
Artificial Antioxidants	No	Artificial Flavourings	No
Artificial Colours	No	Artificial Preservatives	No
Artificial Flavour Enhancers	No	Artificial Sweeteners	No

DIET
SUITABILITY

Vegan Diet	No	Vegetarian Diet	Suitable for
Halal Diet	No	Kosher Diet	No

NUTRITIONAL
INFORMATION

Each 100g/ml portion contains:



of your reference intake.

Typical values per 100g/ml : Energy 86kcal / 358kJ

Nutrient	per 100g	RI per 100g	per 200g serving	RI per 200g serving
Energy (kJ)	358 kJ	4%	716 kJ	9%
Energy (kcal)	86 kcal	4%	172 kcal	9%
Fat	2.9 g	4%	5.8 g	8%
of which Saturates	1 g	5%	2 g	10%
Carbohydrate	11 g	4%	22 g	8%
of which Sugars	1.5 g	2%	3 g	3%
Fibre	0.3 g		0.6 g	
Protein	3.7 g	7%	7.4 g	15%
Salt	0.7 g	12%	1.4 g	23%
Sodium	280 mg		560 mg	

Serving Size 200 g

SUPPLEMENTARY
NUTRITIONAL
INFORMATION

HANDLING &
STORAGE
INFORMATION

Directions For Use

Microwave (850W): Microwave ovens vary. The following is a guide only. Empty contents into a microwaveable container and cover. Heat on full power for 1.5 minutes. Stir, then heat for a further 1 minute. Check that product is hot before serving. Hob: Empty contents into a saucepan and stir gently while heating. Do not boil.

Storage Instructions

After opening, refrigerate in a sealed container and use within 2 days.

Shelf Life from Time of Production	540 Days	Exempt From Shelf Life Labelling	No
---	----------	---	----

ORIGIN

Product Country of Origin/Place of Provenance United Kingdom

Additional Origin Details

n/a

PRODUCT
CHARACTERISTICS
CONFIGURATION

Standards Testing

Case Configuration

Inner Pack Configuration

Total Quantity of Inner Components in Outer Case 24 Units

Outer Case

Is the Outer Case Splittable? No

PRODUCT WEIGHTS

Inner Component	
Variable Weight Consumer Item	No
Inner Component Weight	400 g
Outer Case	
Outer Case Gross Weight	10.95 kg
Outer Case Net Weight	9.6 kg

PRODUCT DIMENSIONS

Inner Component	
Inner Component Depth	75 mm
Inner Component Width	75 mm
Inner Component Height	108 mm
Outer Case	
Outer Case Depth	455 mm
Outer Case Width	305 mm
Outer Case Height	110 mm

PALLET INFORMATION

Quantity of Cases Per Pallet Layer	8 Cases	Pallet Height	1.3 MTR
Quantity of Layers Per Pallet	12 Layers		
Quantity of Cases Per Pallet	96 Cases		

PACKAGING

Inner Component Packaging						
Type	Materials	Weight	Recycled Plastic %	Recyclable	Returnable	Composite
Can	Paper/Cardboard	1.93 g	- %			
Can	Steel	49.86 g	- %			
Outer Case Packaging						
Type	Materials	Weight	Recycled Plastic %	Recyclable	Returnable	Composite
Case	Plastic	1.1 g	- %			
Case	Paper/Cardboard	4 g	- %			

OTHER INFORMATION CONTACT INFORMATION

Address
H.J. Heinz
The Shard
32 London Bridge Street
London
SE1 9SG
England

P: (Phone) 02037 650500

The information on the [Erudus System](#) has been supplied by the manufacturers of the products and, whilst the owners of the Erudus System take steps to ensure the information is regularly updated, they give no warranty and no guarantee that the information is accurate. Product information and ingredients may change, please always read product labels carefully in addition to using the information provided by Erudus.

We do not accept liability for any inaccuracies or incorrect information contained on this site. Please visit <http://www.erudus.com/terms-and-conditions> for full terms and conditions.