

Changed Aug 29, 2024 12:06

Reviewed Aug 29, 2024 12:06

Erudus ID 57e5dc0adaa84f1e83069c3accf19f1d

Version 4.0

13130

BAILEYS CHEESECAKE 16PTN

Baileys Cheesecake

PRODUCT DESCRIPTION

A deep filled cheesecake on a crunchy biscuit base, made with Baileys liqueur and cream cheese topped with a dusting of cocoa powder.

Brand	Waldrons Patisserie Ltd
Manufacturer Product Code	PS2041
Product Type	Food
Product Category	Desserts
Storage Type	Frozen
Erudus ID	57e5dc0adaa84f1e83069c3accf19f1d
Specification Type	Bakery Products



Outer Case GTIN

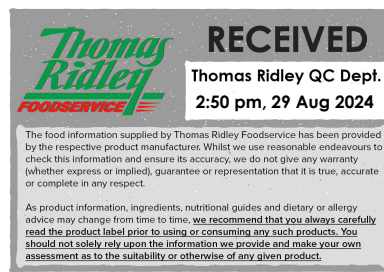
5060667010281



INGREDIENTS

Ingredient Declaration

Cheesecake Filling(71%) Icing mix (50%) (Water, Sugar, Palm Kernel Oil, Palm Oil, Emulsifiers (Polysorbate 60, polyglycerol esters of fatty acids, sunflower lecithin), Stabilisers (Hydroxypropyl methyl cellulose, Sodium Alginate), Salt, Flavourings, Acidity Regulator (Sodium Citrate), Colour (Beta Carotene)), Soured Cream (MILK) Skimmed MILK Powder, Modified Maize Starch, Lactic Cultures, Potassium Sorbate, Cream Cheese (MILK) (13%) Skimmed MILK, Cream (MILK), Skimmed MILK Powder, Lactic Cultures, Salt, MILK Protein, Potassium Sorbate, Modified Starch, Dextrose, Water, Irish Whiskey(2%),Blended Whiskey(2%), Irish Cream Liqueur(1%) (MILK), Irish Cream Flavour (0.1%), colour(E150[c]), Biscuit Base(27%)(WHEAT flour(GLUTEN), wholemeal flour(GLUTEN), vegetable oil(palm, rapeseed), sugar, invert sugar syrup, raising agent (E500, E503), salt), Margarine(vegetable oil(palm, rapeseed), water, salt), partially inverted refiners syrup, coffee beans(sugar, cocoa mass(43%), cocoa butter, emulsifier(E414, SOYA lecithin), coffee, anhydrous MILK fat, glazing agent(E904), natural vanilla flavour, low fat cocoa powder, cocoa powder)



ALLERGENS

Product Contains:

Celery/Celeriac	No
Cereals Containing Gluten	Yes
Barley	No
Oats	No
Rye	No
Wheat (including Spelt and Khorasan)	Yes
Crustacea	No
Eggs	No
Fish	No
Lupin	No
Milk	Yes
Molluscs	No

Mustard	No
Nuts (Tree)	May Contain
Almond nuts	May Contain
Brazil nuts	No
Cashew nuts	No
Hazelnuts	No
Macadamia (Queensland) nuts	No
Pecan nuts	May Contain
Pistachio nuts	No
Walnuts	May Contain
Peanuts	May Contain
Sesame Seeds	No
Soybeans	Yes
Sulphur Dioxide and Sulphites	No

Risk Source:

SUPPLEMENTARY INGREDIENT INFORMATION

Palm Oil	Yes
Hydrogenated Vegetable Oil/Fat	No
GM Protein/DNA	No

ADDITIVES

Product Contains:

Artificial Antioxidants	No
Artificial Colours	Yes
Artificial Flavour Enhancers	No

Artificial Flavourings	No
Artificial Preservatives	No
Artificial Sweeteners	No

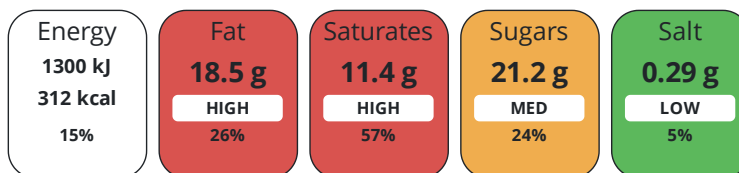
DIET SUITABILITY

Vegan Diet	No
Halal Diet	No

Vegetarian Diet	Suitable for
Kosher Diet	No

NUTRITIONAL INFORMATION

Each 100g/ml portion contains:



of your reference intake.

Typical values per 100g/ml : Energy 312kcal / 1300kj

Nutrient	per 100g	RI per 100g	per 95g serving	RI per 95g serving
Energy (kJ)	1300 kJ	15%	1235 kJ	15%
Energy (kcal)	312 kcal	16%	296.4 kcal	15%
Fat	18.5 g	26%	17.6 g	25%
of which Saturates	11.4 g	57%	10.8 g	54%
Carbohydrate	30.5 g	12%	29 g	11%
of which Sugars	21.2 g	24%	20.1 g	22%
Fibre	0.6 g		0.6 g	
Protein	3.5 g	7%	3.3 g	7%
Salt	0.29 g	5%	0.3 g	5%
Serving Size	95 g			

SUPPLEMENTARY
NUTRITIONAL
INFORMATION

HANDLING &
STORAGE
INFORMATION

Directions For Use

Eat straight from the freezer allowing 5 minutes at room temperature to temper prior to serving. OR remove from inner packaging, defrost in refrigerator over night, serve from chill and use within 48 hours.

Storage Instructions

Store at -18 or below

Shelf Life from Time of Production 540 Days

ACCREDITATIONS/
CERTIFICATIONS/
ASSURANCE/
SCHEMES
ORIGIN

Roundtable of Sustainable Palm Oil (RSPO)

SALSA (Safe & Local Supplier Approval)

Product Country of Origin/Place of United Kingdom

Provenance

Additional Origin Details

N/A

PRODUCT
CHARACTERISTICS

Standards Testing

Do you undertake trend analysis of microbiological results? No

Is shelf life testing undertaken? No

Microbiological Standards

Organism	Description	Frequency	Target	Maximum	Sample (g or ml)
Enterobacteriaceae (cfu/g or ml)		Quarterly	<100	1000	25
E. Coli (cfu/g or ml)		Quarterly	<10	10	25
Staphylococcus Aureus (cfu/g or ml)		Quarterly	<10	100	25
Salmonella (cfu/g or ml)		Quarterly	<0	0	25
Listeria Monocytogenes (cfu/g or ml)		Quarterly	<0	0	25

CONFIGURATION

Case Configuration

Inner Pack Configuration

Total Quantity of Inner Components in 1 Units

Outer Case

Is the Outer Case Splittable? No

PRODUCT
WEIGHTS

Inner Component

Variable Weight Consumer Item Yes

Outer Case

Outer Case Gross Weight 1.97 kg

Outer Case Net Weight 1.72 kg

PRODUCT
DIMENSIONS

Inner Component

Inner Component Depth 0 mm

Inner Component Width 0 mm

Inner Component Height 0 mm

Outer Case

Outer Case Depth 291 mm

Outer Case Width 291 mm

Outer Case Height 71 mm

PALLET
INFORMATION

Quantity of Cases Per Pallet Layer	12 Cases	Pallet Type	UK Standard Pallet
Quantity of Layers Per Pallet	15 Layers	Pallet Height	1.6 MTR
Quantity of Cases Per Pallet	180 Cases	Pallet Gross Weight	427 kg

PACKAGING

Inner Component Packaging

Type	Materials	Weight	Recycled Plastic %	Recyclable	Returnable	Composite
Box	Plastic	10 g	- %			
Box	Paper/Cardboard	70 g	- %			

Outer Case Packaging

Type	Materials	Weight	Recycled Plastic %	Recyclable	Returnable	Composite
Case	Plastic	10 g	- %			
Case	Paper/Cardboard	223 g	- %			

Transport Packaging

Type	Materials	Weight	Recycled Plastic %	Recyclable	Returnable	Composite
Other	Plastic	500 g	- %			
Other	Paper/Cardboard	1000 g	- %			
Other	Wood	30 g	- %			

OTHER
INFORMATION

Manufacturer Comments

Minimum quantities of 180 can be made up using any combination of mixed products.

CONTACT
INFORMATION

Address

Waldrons Patisserie Ltd
Units 1-5
Mardle Way
Buckfastleigh
Devon
TQ11 0NR
England

P: (Phone) 01364 643871

The information on the [Erudus System](#) has been supplied by the manufacturers of the products and, whilst the owners of the Erudus System take steps to ensure the information is regularly updated, they give no warranty and no guarantee that the information is accurate. Product information and ingredients may change, please always read product labels carefully in addition to using the information provided by Erudus.

We do not accept liability for any inaccuracies or incorrect information contained on this site.
Please visit <http://www.erudus.com/terms-and-conditions> for full terms and conditions.