


Changed Jan 12, 2024 00:00

Reviewed Jan 11, 2024 11:40

Erudus ID e8a3facb7aa24e3ca27f04ad69d0a2a9

Version 2.0



**RECEIVED**  
Thomas Ridley QC Dept.  
11:00 am, 12 Jan 2024

The food information supplied by Thomas Ridley Foodservice has been provided by the respective product manufacturers. Whilst we use reasonable endeavours to check this information and ensure its accuracy, we do not give any warranty (whether express or implied), guarantee or representation that it is true, accurate or complete in any respect.

As product information, ingredients, nutritional guides and dietary or allergy advice may change from time to time, we recommend that you always carefully read the product label prior to using or consuming any such products. You should not solely rely upon the information we provide and make your own assessment as to the suitability or otherwise of any given product.



# Breaded Brie Wedges 6x900g

Breaded Brie Wedges 6 x 24pieces

## PRODUCT DESCRIPTION

Full fat pasteurised Brie wedge encapsulated in a lightly seasoned batter and enrobed in a Japanese style breadcrumb.

Brand	Innovate Foods Ltd
Manufacturer Product Code	410007
Manufacturer Version Number	N/A
Batch Code	N/A
Day Code	N/A
Effective Date	Jan 11, 2024
Product Type	Food
Product Category	Breaded / Coated Cheese
Storage Type	Frozen
Erudus ID	e8a3facb7aa24e3ca27f04ad69d0a2a9
Specification Type	Cheese
Inner Component GTIN	5018525810016
Outer Case GTIN	5018525824617



## INGREDIENTS

### Ingredient Declaration

**Brie (MILK)** (50%), **Wheat** Flour (**WHEAT** Flour, Calcium Carbonate, Niacin, Iron, Thiamin), Water, Rice Flour, **WHEAT** Starch, Rapeseed Oil, Salt, Yeast, Raising Agents (Diphosphates, Sodium Carbonates).

## ALLERGENS

Product Contains:

<b>Celery/Celeriac</b>	No	<b>Mustard</b>	May Contain
<b>Cereals Containing Gluten</b>	Yes	<b>Nuts (Tree)</b>	No
<b>Barley</b>	No	<b>Almond nuts</b>	No
<b>Oats</b>	No	<b>Brazil nuts</b>	No
<b>Rye</b>	No	<b>Cashew nuts</b>	No
<b>Wheat (including Spelt and Khorasan)</b>	Yes	<b>Hazelnuts</b>	No
<b>Crustacea</b>	No	<b>Macadamia (Queensland) nuts</b>	No
<b>Eggs</b>	May Contain	<b>Pecan nuts</b>	No
<b>Fish</b>	No	<b>Pistachio nuts</b>	No
<b>Lupin</b>	No	<b>Walnuts</b>	No
<b>Milk</b>	Yes	<b>Peanuts</b>	No
<b>Molluscs</b>	No	<b>Sesame Seeds</b>	No
		<b>Soybeans</b>	May Contain
		<b>Sulphur Dioxide and Sulphites</b>	No

Risk Source:

SUPPLEMENTARY  
INGREDIENT  
INFORMATION

<b>Palm Oil</b>	No
<b>Hydrogenated Vegetable Oil/Fat</b>	No
<b>GM Protein/DNA</b>	No

ADDITIVES

*Product Contains:*

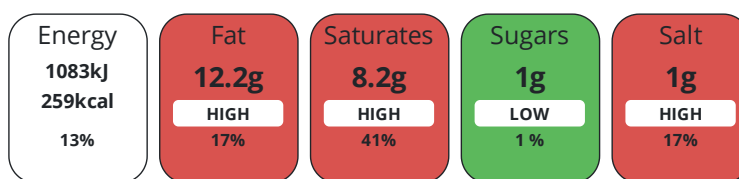
<b>Artificial Antioxidants</b>	No	<b>Artificial Flavourings</b>	No
<b>Artificial Colours</b>	No	<b>Artificial Preservatives</b>	No
<b>Artificial Flavour Enhancers</b>	No	<b>Artificial Sweeteners</b>	No

DIET  
SUITABILITY

<b>Vegetarian Diet</b>	Suitable for	<b>Halal Diet</b>	No
<b>Kosher Diet</b>	No		

NUTRITIONAL  
INFORMATION

Each 100g/ml portion contains:



of your reference intake.

Typical values per 100g/ml : Energy 259kcal / 1083kj

Nutrient	per 100g	RI per 100g
<b>Energy (kJ)</b>	1083 kJ	13%
<b>Energy (kcal)</b>	259 kcal	13%
<b>Fat</b>	12.2 g	17%
<b>of which Saturates</b>	8.2 g	41%
<b>Carbohydrate</b>	24.9 g	10%
<b>of which Sugars</b>	1 g	1%
<b>Fibre</b>	1 g	
<b>Protein</b>	12.6 g	25%
<b>Salt</b>	1 g	17%

VITAMINS AND  
MINERALS

Nutrient	per 100g	RI per 100g
<b>Vitamin C</b>	0 mg	0%
<b>Folate/Folic Acid</b>	0 µg	0%
<b>Calcium</b>	0 mg	0%
<b>Iron</b>	0 mg	0%
<b>Zinc</b>	0 mg	0%

SUPPLEMENTARY  
NUTRITIONAL  
INFORMATION

<b>Cholesterol per 100 g/ml (UK/FR)</b>	0 g
<b>Fat Percentage in Dry Matter per 100 g/ml</b>	0 %
<b>Non Milk Extrinsic Sugars per 100 g/ml</b>	0 g

HANDLING &  
STORAGE  
INFORMATION

**Directions For Use**

Deep fry in oil at 180c (365F) for 4 minutes. Drain well before serving.

**Storage Instructions**

-18°C

<b>Shelf Life from Time of Production</b>	547 Days	<b>Exempt From Shelf Life Labelling</b>	No
---	----------	---	----

ACCREDITATIONS/  
CERTIFICATIONS/  
ASSURANCE  
SCHEMES



ORIGIN

<b>Product Country of Origin/Place of Provenance</b>	United Kingdom
--	----------------

**Additional Origin Details**

Manufactured in the UK

PRODUCT  
CHARACTERISTICS  
CONFIGURATION

Standards Testing			
Case Configuration		Inner Pack Configuration	
<b>Total Quantity of Inner Components in Outer Case</b>	6 Units	<b>Count per Inner Component</b>	24
<b>Is the Outer Case Splittable?</b>	Yes		

PRODUCT  
WEIGHTS

Inner Component	
<b>Variable Weight Consumer Item</b>	No
<b>Inner Component Weight</b>	900 g
<b>Net Drained Weight</b>	900 g
<b>e mark</b>	No
Outer Case	
<b>Outer Case Gross Weight</b>	6.13 kg
<b>Outer Case Net Weight</b>	5.76 kg

PRODUCT  
DIMENSIONS

Inner Component	
<b>Inner Component Depth</b>	260 mm
<b>Inner Component Width</b>	210 mm
<b>Inner Component Height</b>	75 mm
Outer Case	
<b>Outer Case Depth</b>	393 mm
<b>Outer Case Width</b>	290 mm
<b>Outer Case Height</b>	140 mm

PALLET  
INFORMATION

<b>Quantity of Cases Per Pallet Layer</b>	10 Cases	<b>Pallet Height</b>	1.7 MTR
<b>Quantity of Layers Per Pallet</b>	10 Layers	<b>Pallet Gross Weight</b>	576 kg
<b>Quantity of Cases Per Pallet</b>	100 Cases		

PACKAGING

Inner Component Packaging						
Type	Materials	Weight	Recycled Plastic %	Recyclable	Returnable	Composite
Bag	Plastic	8 g	- %			
Outer Case Packaging						
Type	Materials	Weight	Recycled Plastic %	Recyclable	Returnable	Composite
Case	Paper/Cardboard	315 g	- %			

Transport Packaging

Type	Materials	Weight	Recycled Plastic %	Recyclable	Returnable	Composite
Other	Plastic	390 g	- %			
Other	Wood	14400 g	- %			

OTHER INFORMATION

**Manufacturer Comments**

None

CONTACT INFORMATION

**Address**

Innovate Foods Ltd  
Barncraig  
Boreland Road  
Kirkcaldy  
Fife  
KY1 2YG  
Scotland

**P: (Phone)** 01592 651525

The information on the [Erudus System](#) has been supplied by the manufacturers of the products and, whilst the owners of the Erudus System take steps to ensure the information is regularly updated, they give no warranty and no guarantee that the information is accurate. Product information and ingredients may change, please always read product labels carefully in addition to using the information provided by Erudus.

We do not accept liability for any inaccuracies or incorrect information contained on this site.  
Please visit <http://www.erudus.com/terms-and-conditions> for full terms and conditions.