

Changed Aug 29, 2024 12:18

Reviewed Aug 29, 2024 12:18

Erudus ID 9c3bb128c3d543c7a39f340d6103e037

Version 2.0

13144

# Rum and Black Cherry sponge roulade

Rum And Black Cherry Sponge Roulade

## PRODUCT DESCRIPTION

A Chocolate sponge roulade encasing a dark cherry compote and a dark rum flavoured crème.

Brand	Waldrons Patisserie Ltd
Manufacturer Product Code	0063
Product Type	Food
Product Category	Desserts
Storage Type	Frozen
Erudus ID	9c3bb128c3d543c7a39f340d6103e037
Specification Type	Bakery Products



Outer Case GTIN

5060667010717



## INGREDIENTS

### Ingredient Declaration

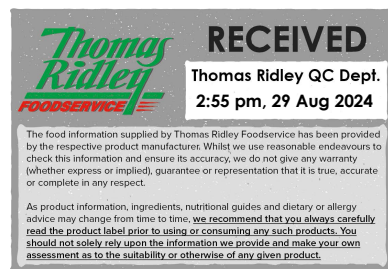
CHOCOLATE SPONGE (34%) (WHEAT flour (GLUTEN), Sugar, Whole EGG Powder, Fat Reduced Cocoa Powder (6%), Raising agent (E501[ii], E339, E500, E450), Skimmed MILK powder, Emulsifier (E472[b], E477, E471), Dried EGG Albumin, Dried Glucose syrup, Salt, Maltodextrin, Thickener (E466), Flavouring, Whey Solids(MILK), Colour(E160[a]), Water)

CRÈME FILLING (28%), Icing mix (50%) (Water, Sugar, Palm Kernel Oil, Palm Oil, Emulsifiers (Polysorbate 60, polyglycerol esters of fatty acids, sunflower lecithin), Stabilisers (Hydroxypropyl methyl cellulose, Sodium Alginate), Salt, Flavourings, Acidity Regulator (Sodium Citrate), Colour (Beta Carotene), Fresh Whipping Cream (MILK), Dark Rum(2%), White Rum(99.9%) Caramel Colour(E150a))

DARK CHERRY COMPOTE(17%) (Water, Black Cherries(37%), Sugar, Modified Starch, Acidity regulator(Citric Acid), Natural Flavour, Preservative(E202))

CHOCOLATE ICING(17%)(Sugar, Vegetable Oil (Palm, Rapeseed), Water, Cocoa powder(8%), Dried Glucose Syrup, Glucose Syrup, Emulsifier(E471,E473), Glycerine, Preservative(E202), Acidity Regulator(E270, E327), Natural Flavouring)

WHITE CHOCOLATE(7%)(Sugar, Full Cream MILK Powder, Cocoa Butter(23%), Flavour, Emulsifier(SOYA Lecithin), Dusting Sugar (Glucose, Cornflour, Vegetable Palm Oil))



ALLERGENS

Product Contains:

<b>Celery/Celeriac</b>	No	<b>Mustard</b>	No
<b>Cereals Containing Gluten</b>	Yes	<b>Nuts (Tree)</b>	May Contain
<b>Barley</b>	No	<b>Almond nuts</b>	May Contain
<b>Oats</b>	No	<b>Brazil nuts</b>	No
<b>Rye</b>	No	<b>Cashew nuts</b>	No
<b>Wheat (including Spelt and Khorasan)</b>	Yes	<b>Hazelnuts</b>	No
<b>Crustacea</b>	No	<b>Macadamia (Queensland) nuts</b>	No
<b>Eggs</b>	Yes	<b>Pecan nuts</b>	May Contain
<b>Fish</b>	No	<b>Pistachio nuts</b>	No
<b>Lupin</b>	No	<b>Walnuts</b>	May Contain
<b>Milk</b>	Yes	<b>Peanuts</b>	No
<b>Molluscs</b>	No	<b>Sesame Seeds</b>	No
		<b>Soybeans</b>	Yes
		<b>Sulphur Dioxide and Sulphites</b>	No

Risk Source:

SUPPLEMENTARY INGREDIENT INFORMATION

<b>Palm Oil</b>	Yes
<b>Hydrogenated Vegetable Oil/Fat</b>	No
<b>GM Protein/DNA</b>	No

ADDITIVES

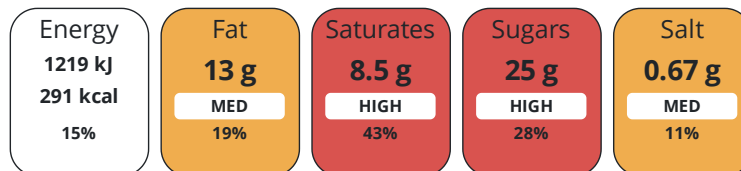
Product Contains:

<b>Artificial Antioxidants</b>	No	<b>Artificial Flavourings</b>	No
<b>Artificial Colours</b>	No	<b>Artificial Preservatives</b>	No
<b>Artificial Flavour Enhancers</b>	No	<b>Artificial Sweeteners</b>	No
<b>Vegan Diet</b>	No	<b>Vegetarian Diet</b>	Suitable for
<b>Halal Diet</b>	No	<b>Kosher Diet</b>	No

DIET SUITABILITY

NUTRITIONAL INFORMATION

Each 100g/ml portion contains:



of your reference intake.

Typical values per 100g/ml : Energy 291kcal / 1219kj

Nutrient	per 100g	RI per 100g	per 110g serving	RI per 110g serving
<b>Energy (kJ)</b>	1219 kJ	15%	1340.9 kJ	16%
<b>Energy (kcal)</b>	291 kcal	15%	320.1 kcal	16%
<b>Fat</b>	13 g	19%	14.3 g	20%
<b>of which Saturates</b>	8.5 g	43%	9.4 g	47%
<b>Carbohydrate</b>	39 g	15%	42.9 g	17%
<b>of which Sugars</b>	25 g	28%	27.5 g	31%
<b>Fibre</b>	1 g		1.1 g	
<b>Protein</b>	3.1 g	6%	3.4 g	7%
<b>Salt</b>	0.67 g	11%	0.7 g	12%

**Serving Size** 110 g

SUPPLEMENTARY  
NUTRITIONAL  
INFORMATION

HANDLING &  
STORAGE  
INFORMATION

**Directions For Use**

Defrost in a refrigerator and consume within 48 hours, whilst protecting in box and plastic cloche

**Storage Instructions**

Store at -18 or below

**Shelf Life from Time of Production** 540 Days

ACCREDITATIONS/  
CERTIFICATIONS/  
ASSURANCE  
SCHEMES  
ORIGIN

**SALSA (Safe & Local Supplier Approval)**

**Product Country of Origin/Place of** United Kingdom

**Provenance**

Standards Testing

PRODUCT  
CHARACTERISTICS

**Do you undertake trend analysis of microbiological results?** Yes **Is shelf life testing undertaken?** Yes

Microbiological Standards

Organism	Description	Frequency	Target	Maximum	Sample (g or ml)
E. Coli (cfu/g or ml)		Quarterly	<10	10	25
Enterobacteriaceae (cfu/g or ml)		Quarterly	<100	1000	25
Listeria Monocytogenes (cfu/g or ml)		Monthly	<0	0	25
Staphylococcus Aureus (cfu/g or ml)		Quarterly	<10	100	25
Salmonella (cfu/g or ml)		Quarterly	<0	0	25

CONFIGURATION

Case Configuration

Inner Pack Configuration

**Total Quantity of Inner Components in Outer Case** 1 Units

**Is the Outer Case Splittable?** No

PRODUCT  
WEIGHTS

Inner Component

**Variable Weight Consumer Item** Yes

Outer Case

**Outer Case Gross Weight** 2.01 kg

**Outer Case Net Weight** 1.76 kg

PRODUCT  
DIMENSIONS

Inner Component

**Inner Component Depth** 0 mm

**Inner Component Width** 0 mm

**Inner Component Height** 0 mm

Outer Case

**Outer Case Depth** 406 mm

**Outer Case Width** 152 mm

**Outer Case Height** 100 mm

PALLET INFORMATION

<b>Quantity of Cases Per Pallet Layer</b>	16 Cases	<b>Pallet Type</b>	UK Standard Pallet
<b>Quantity of Layers Per Pallet</b>	12 Layers	<b>Pallet Height</b>	1.82 MTR
<b>Quantity of Cases Per Pallet</b>	192 Cases	<b>Pallet Gross Weight</b>	417.5 kg

PACKAGING

Inner Component Packaging

Type	Materials	Weight	Recycled Plastic %	Recyclable	Returnable	Composite
Poly Treated PET/PE	Plastic	47 g	- %			
Poly Treated PET/PE	Paper/Cardboard	203 g	- %			

Outer Case Packaging

Type	Materials	Weight	Recycled Plastic %	Recyclable	Returnable	Composite
Case	Plastic	47 g	- %			
Case	Paper/Cardboard	203 g	- %			

Transport Packaging

Type	Materials	Weight	Recycled Plastic %	Recyclable	Returnable	Composite
Other	Plastic	500 g	- %			
Other	Paper/Cardboard	1000 g	- %			
Other	Wood	30000 g	- %			

OTHER INFORMATION

**Manufacturer Comments**

Minimum order quantity of 192 can be made up of mixed products and therefore could be 180, depending on mixed product heights.

CONTACT INFORMATION

Address

Waldrons Patisserie Ltd  
Units 1-5  
Mardle Way  
Buckfastleigh  
Devon  
TQ11 0NR  
England

P: (Phone) 01364 643871

The information on the [Erudus System](#) has been supplied by the manufacturers of the products and, whilst the owners of the Erudus System take steps to ensure the information is regularly updated, they give no warranty and no guarantee that the information is accurate. Product information and ingredients may change, please always read product labels carefully in addition to using the information provided by Erudus.

We do not accept liability for any inaccuracies or incorrect information contained on this site. Please visit <http://www.erudus.com/terms-and-conditions> for full terms and conditions.