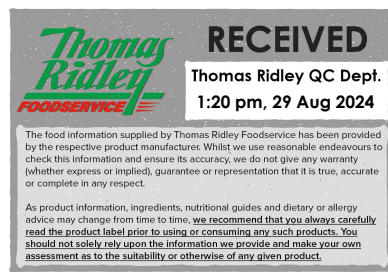


Changed Aug 29, 2024 10:35

Reviewed Aug 29, 2024 10:35

Erudus ID 9fdbea8f1f184bc6b4c08eeeac38de1e

Version 2.0



13146

# GLUTEN FREE RASPBERRY & WHITE CHOCOLATE MERINGUE ROULADE 16 PTN

Raspberry & White Chocolate Meringue Roulade

## PRODUCT DESCRIPTION

Meringue roulade with a raspberry creme filling and white chocolate

Brand	Waldrons Patisserie Ltd
Manufacturer Product Code	0074
Product Type	Food
Product Category	Desserts
Storage Type	Frozen
Erudus ID	9fdbea8f1f184bc6b4c08eeeac38de1e
Specification Type	Generic



Outer Case GTIN 5060667010687



## INGREDIENTS

### Ingredient Declaration

Raspberry Flavour Creme (42%) Icing mix (50%) (Water, Sugar, Palm Kernel Oil, Palm Oil, Emulsifiers (Polysorbate 60, polyglycerol esters of fatty acids, sunflower lecithin), Stabilisers (Hydroxypropyl methyl cellulose, Sodium Alginate), Salt, Flavourings, Acidity Regulator (Sodium Citrate), Colour (Beta Carotene)), Whipping Crème(6%)(Reconstituted Skimmed MILK Powder, Palm Kernel Oil, Water, Palm Oil, Modified Maize Starch, Flavourings (contain MILK), MILK Protein, Thickener (E415), Acidity Regulator (E331, E340), Emulsifiers (E471, E322, E435), Salt, Colour (Beta Carotene)), Fresh Whipping Cream (MILK), Meringue (39%) (Caster Sugar, Liquid EGG White (EGG Albumen, Acidity Regulator (E270), Stabiliser (E520)), Dried EGG Albumen, Stabiliser (E466, E412), Acidity Regulator (E330)), Raspberry Sauce (10%) (Raspberries (39%), Water, Sugar, Modified Maize Starch, Acidity Regulator (E330), Flavour, Preservative (E202), Flavour, Colour (E122)), White Chocolate (8%), (Sugar, Full Cream MILK Powder, Cocoa Butter (23%), Flavour, Emulsifier (SOYA Lecithin), Dusting Sugar (Dextrose, Cornflour, Vegetable Oil (Palm)))

ALLERGENS

Product Contains:

<b>Celery/Celeriac</b>	No	<b>Mustard</b>	No
<b>Cereals Containing Gluten</b>	No	<b>Nuts (Tree)</b>	May Contain
<b>Barley</b>	No	<b>Almond nuts</b>	May Contain
<b>Oats</b>	No	<b>Brazil nuts</b>	No
<b>Rye</b>	No	<b>Cashew nuts</b>	No
<b>Wheat (including Spelt and Khorasan)</b>	No	<b>Hazelnuts</b>	No
<b>Crustacea</b>	No	<b>Macadamia (Queensland) nuts</b>	No
<b>Eggs</b>	Yes	<b>Pecan nuts</b>	No
<b>Fish</b>	No	<b>Pistachio nuts</b>	No
<b>Lupin</b>	No	<b>Walnuts</b>	No
<b>Milk</b>	Yes	<b>Peanuts</b>	No
<b>Molluscs</b>	No	<b>Sesame Seeds</b>	No
		<b>Soybeans</b>	Yes
		<b>Sulphur Dioxide and Sulphites</b>	No

Risk Source:

SUPPLEMENTARY  
INGREDIENT  
INFORMATION

<b>Palm Oil</b>	Yes
<b>Hydrogenated Vegetable Oil/Fat</b>	No
<b>GM Protein/DNA</b>	No

ADDITIVES

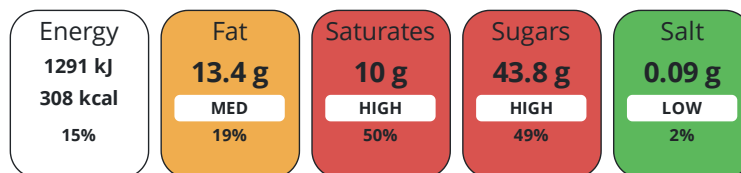
Product Contains:

<b>Artificial Antioxidants</b>	No	<b>Artificial Flavourings</b>	No
<b>Artificial Colours</b>	No	<b>Artificial Preservatives</b>	No
<b>Artificial Flavour Enhancers</b>	No	<b>Artificial Sweeteners</b>	No
<b>Vegan Diet</b>	No	<b>Vegetarian Diet</b>	No
<b>Halal Diet</b>	No	<b>Kosher Diet</b>	No

DIET  
SUITABILITY

NUTRITIONAL  
INFORMATION

Each 100g/ml portion contains:



of your reference intake.

Typical values per 100g/ml : Energy 308kcal / 1291kJ

Nutrient	per 100g	RI per 100g
<b>Energy (kJ)</b>	1291 kJ	15%
<b>Energy (kcal)</b>	308 kcal	15%
<b>Fat</b>	13.4 g	19%
<b>of which Saturates</b>	10 g	50%
<b>Carbohydrate</b>	44.6 g	17%
<b>of which Sugars</b>	43.8 g	49%
<b>Fibre</b>	< 0.5 g	
<b>Protein</b>	2.2 g	4%
<b>Salt</b>	0.09 g	2%

SUPPLEMENTARY  
NUTRITIONAL  
INFORMATION

HANDLING &  
STORAGE  
INFORMATION

**Directions For Use**

Serve or eat straight from the freezer OR remove from freezer, store in a refrigerator and consume from chilled, consume within 48 hrs

**Storage Instructions**

Store at -18c or below

**Shelf Life from Time of Production** 540 Days

ACCREDITATIONS/  
CERTIFICATIONS/  
ASSURANCE/  
SCHEMES  
ORIGIN

**Roundtable of Sustainable Palm Oil (RSPO)**

**SALSA (Safe & Local Supplier Approval)**

**Product Country of Origin/Place of** United Kingdom

**Provenance**

PRODUCT  
CHARACTERISTICS

Standards Testing

**Do you undertake trend analysis of microbiological results?** Yes

**Is shelf life testing undertaken?** Yes

Microbiological Standards

Organism	Description	Frequency	Target	Maximum	Sample (g or ml)
E. Coli (cfu/g or ml)		Monthly	<10	10	25
Enterobacteriaceae (cfu/g or ml)		Monthly	<100	1000	25
Listeria Monocytogenes (cfu/g or ml)		Monthly	<0	0	25
Staphylococcus Aureus (cfu/g or ml)		Monthly	<10	100	25
Total Viable Count (TVC) (cfu/g or ml)		Quarterly	<10000	500000	25
Salmonella (cfu/g or ml)		Monthly	<0	0	25

CONFIGURATION

Case Configuration

Inner Pack Configuration

**Total Quantity of Inner Components in** 1 Units

**Outer Case**

**Is the Outer Case Splittable?** No

PRODUCT  
WEIGHTS

Inner Component

**Variable Weight Consumer Item** Yes

Outer Case

**Outer Case Gross Weight** 1.37 kg

**Outer Case Net Weight** 1.12 kg

PRODUCT  
DIMENSIONS

Inner Component

**Inner Component Depth** 0 mm

**Inner Component Width** 0 mm

**Inner Component Height** 0 mm

Outer Case

**Outer Case Depth** 406 mm

**Outer Case Width** 152 mm

**Outer Case Height** 100 mm

PALLET INFORMATION

<b>Quantity of Cases Per Pallet Layer</b>	16 Cases	<b>Pallet Type</b>	UK Standard Pallet
<b>Quantity of Layers Per Pallet</b>	12 Layers	<b>Pallet Height</b>	1.4 MTR
<b>Quantity of Cases Per Pallet</b>	192 Cases	<b>Pallet Gross Weight</b>	295 kg

PACKAGING

Inner Component Packaging

Type	Materials	Weight	Recycled Plastic %	Recyclable	Returnable	Composite
Box	Plastic	47 g	- %			
Box	Paper/Cardboard	203 g	- %			

Outer Case Packaging

Type	Materials	Weight	Recycled Plastic %	Recyclable	Returnable	Composite
Case	Plastic	47 g	- %			
Case	Paper/Cardboard	205 g	- %			

Transport Packaging

Type	Materials	Weight	Recycled Plastic %	Recyclable	Returnable	Composite
Other	Plastic	500 g	- %			
Other	Paper/Cardboard	1000 g	- %			
Other	Wood	30000 g	- %			

OTHER INFORMATION

**Manufacturer Comments**

192 cases per pallet is for roulades only, 180 cases can be made up of mixed cases.

CONTACT INFORMATION

Address

Waldrons Patisserie Ltd  
 Units 1-5  
 Mardle Way  
 Buckfastleigh  
 Devon  
 TQ11 0NR  
 England

P: (Phone) 01364 643871

The information on the [Erudus System](#) has been supplied by the manufacturers of the products and, whilst the owners of the Erudus System take steps to ensure the information is regularly updated, they give no warranty and no guarantee that the information is accurate. Product information and ingredients may change, please always read product labels carefully in addition to using the information provided by Erudus.

We do not accept liability for any inaccuracies or incorrect information contained on this site.  
 Please visit <http://www.erudus.com/terms-and-conditions> for full terms and conditions.