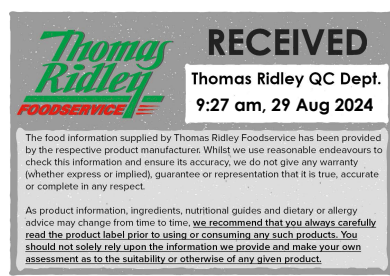


Changed Aug 29, 2024 06:15

Reviewed Aug 29, 2024 06:15

Erudus ID e3eb52d29afe452381f42ca456514105

Version 4.0



Thomas Ridley
FOODSERVICE

RECEIVED
Thomas Ridley QC Dept.
9:27 am, 29 Aug 2024

The food information supplied by Thomas Ridley Foodservice has been provided by the respective product manufacturers. Whilst we use reasonable endeavours to check this information and ensure its accuracy, we do not give any warranty (whether express or implied), guarantee or representation that it is true, accurate or complete in any respect.

As product information, ingredients, nutritional guides and dietary or allergy advice may change from time to time, we recommend that you always carefully read the product label prior to using or consuming any such products. You should not solely rely upon the information we provide and make your own assessment as to the suitability or otherwise of any given product.



13148

VEGAN ESPRESSO MARTINI CHEESECAKE (16PTN)

Vegan Espresso Martini Cheesecake

PRODUCT DESCRIPTION

CHOCOLATE DIGESTIVE BISCUIT BASE, TOPPED WITH A CREAMY VEGAN CHEESECAKE CRÈME, FLAVOURED WITH KAHLUA, DARK RUM, COFFEE, FINISHED WITH DARK CHOCOLATE CURLS AND GOLD DÉCOR.

Brand	Waldrons Patisserie Ltd
Manufacturer Product Code	PS2036V
Product Type	Food
Product Category	Desserts
Storage Type	Frozen
Erudus ID	e3eb52d29afe452381f42ca456514105
Specification Type	Generic



Outer Case GTIN 5060667011486



INGREDIENTS

Ingredient Declaration

Cheesecake filling (68%) (Icing Mix (Water, Sugar, Palm Kernel Oil, Palm Oil, Emulsifiers (Polysorbate 60, Polyglycerol esters of fatty acids, Sunflower Lecithin), Stabilisers (hydroxypropyl methyl cellulose, sodium alginate), Salt, Flavourings, Acidity regulator (Sodium Citrate), Colour (Beta Carotene)), Vegan Cream Cheese (19%) Water, Coconut Oil (23%), Starch, Sea Salt, Acidity Regulator: Glucono-Delta-Lactone, Flavourings, Olive Extract, Vitamin B12, Dark Rum (White Rum(99.9%) Caramel Colour(E150a)), Kaluha liqueur (Sugar, water, Coffee Extract (Arabica coffee), Colour (E150d), Vanillin, Rum (Molasses/Sugarcane distillate), Rum Flavour, Coffee Granules(1.5%)(100% Arabica coffee beans), Water)), Biscuit base (25%) (Biscuit Crumb (**WHEAT** flour(**GLUTEN**), Wholemeal flour (**GLUTEN**), Vegetable Oil (Palm, Rapeseed), Sugar, Invert Sugar Syrup, Raising Agent (E500, E503), Salt), Margarine (Vegetable Oils (Palm, Rape), Water, Salt), Partially Inverted Refiners Syrup (**SULPHITES**), Cocoa Powder)), Dark Chocolate (Sugar, Cocoa Mass (44%), Cocoa Butter (6%), Flavour, Emulsifier (**SOYA** Lecithin), Cocoa powder, Gold Lustre (Propellants (Butane, Isobutane, Propane), Ethyl Alcohol, Flavourings, Colours (Titanium Dioxide, Iron Dioxides)), Colour (Vegetable carbon, Glycerine)

ALLERGENS

Product Contains:

Celery/Celeriac	No	Mustard	No
Cereals Containing Gluten	Yes	Nuts (Tree)	May Contain
Barley	No	Almond nuts	May Contain
Oats	No	Brazil nuts	No
Rye	No	Cashew nuts	No
Wheat (including Spelt and Khorasan)	Yes	Hazelnuts	May Contain
Crustacea	No	Macadamia (Queensland) nuts	No
Eggs	No	Pecan nuts	No
Fish	No	Pistachio nuts	No
Lupin	No	Walnuts	No
Milk	No	Peanuts	May Contain
Molluscs	No	Sesame Seeds	No
		Soybeans	Yes
		Sulphur Dioxide and Sulphites	Yes

Risk Source:

Tree Nuts (Risk Source)	Raw Material	Almond nuts (Risk Source)	Raw Material
Hazelnuts (Risk Source)	Raw Material	Peanuts (Risk Source)	Raw Material

Allergen Statement On Pack

Product may contain tree nuts and peanuts due to raw material contamination Product produced in a factory that handles egg and milk

SUPPLEMENTARY
INGREDIENT
INFORMATION

Palm Oil	Yes	Alcoholic Strength %Vol (ABV)	2 % Vol
Hydrogenated Vegetable Oil/Fat	No		
GM Protein/DNA	No		

ADDITIVES

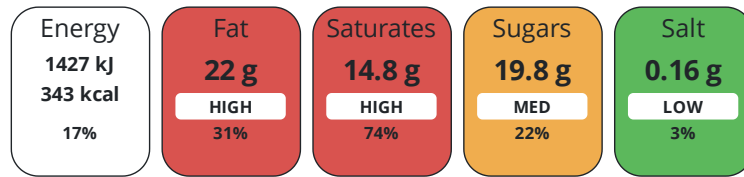
Product Contains:

DIET
SUITABILITY

Vegan Diet	Suitable for	Vegetarian Diet	Suitable for
Halal Diet	No	Kosher Diet	No

NUTRITIONAL
INFORMATION

Each 100g/ml portion contains:



of your reference intake.

Typical values per 100g/ml : Energy 343kcal / 1427kJ

Nutrient	per 100g	RI per 100g	per 1g serving	RI per 1g serving
Energy (kJ)	1427 kJ	17%	14.3 kJ	0%
Energy (kcal)	343 kcal	17%	3.4 kcal	0%
Fat	22 g	31%	0.2 g	0%
of which Saturates	14.8 g	74%	0.1 g	1%
Carbohydrate	31 g	12%	0.3 g	0%
of which Sugars	19.8 g	22%	0.2 g	0%
Fibre	0.8 g		-	
Protein	1.9 g	4%	-	
Salt	0.16 g	3%	-	

Serving Size	1 g
Serving Size Description	1 portion
Number of Servings	1 Servings

Source of Nutritional Information Calculation from known/accepted datasets

SUPPLEMENTARY
NUTRITIONAL
INFORMATION

Fibre Type	Fibre Unknown
-------------------	---------------

HANDLING &
STORAGE
INFORMATION

Directions For Use

Remove all packaging, place on suitable dish and defrost fully in refrigerator, alternatively take out the desired number of portions and place on suitable dish, defrost fully in a refrigerator.

Storage Instructions

Store at -18°C or below

Storage Instructions After Opening

Store and serve from chilled, do not re freeze

Shelf Life from Time of Production	540 Days	Exempt From Shelf Life Labelling	Yes
Shelf Life From Opening	2 Days		
Shelf Life Once Defrosted	2 Days		

ACCREDITATIONS/
CERTIFICATIONS/
ASSURANCE
SCHEMES
ORIGIN

SALSA (Safe & Local Supplier Approval)

Product Country of Origin/Place of United Kingdom

Provenance

PRODUCT
CHARACTERISTICS
CONFIGURATION

Standards Testing

Case Configuration

Inner Pack Configuration

Variable Inner Components in Outer Case No

Total Quantity of Inner Components in 1 Units

Outer Case

Is the Outer Case Splittable? No

PRODUCT
WEIGHTS

Inner Component

Variable Weight Consumer Item Yes

Outer Case

Outer Case Gross Weight 1.86 kg

Outer Case Net Weight 1.6 kg

PRODUCT
DIMENSIONS

Inner Component

Inner Component Depth 0 mm

Inner Component Width 0 mm

Inner Component Height 0 mm

Outer Case

Outer Case Depth 291 mm

Outer Case Width 291 mm

Outer Case Height 96 mm

PALLET
INFORMATION

Quantity of Cases Per Pallet Layer 12 Cases

Pallet Type UK Standard Pallet

Quantity of Layers Per Pallet 17 Layers

Pallet Height 1.56 MTR

Quantity of Cases Per Pallet 204 Cases

Pallet Gross Weight 411 kg

PACKAGING

Inner Component Packaging

Type	Materials	Weight	Recycled Plastic %	Recyclable	Returnable	Composite
Bag	Plastic / PE (Polyethylene)	3 g	- %	Yes	No	No

Outer Case Packaging

Type	Materials	Weight	Recycled Plastic %	Recyclable	Returnable	Composite
Box	Paper/Cardboard / Cardboard	185 g	- %	Yes	No	No

Transport Packaging

Type	Materials	Weight	Recycled Plastic %	Recyclable	Returnable	Composite
Pallet Wrap	Plastic	500 g	- %	No	No	No

MARKETING INFORMATION

Marketing Description

CHOCOLATE DIGESTIVE BISCUIT BASE, TOPPED WITH A CREAMY VEGAN CHEESECAKE CRÈME, FLAVOURED WITH KAHLUA, DARK RUM, COFFEE, FINISHED WITH DARK CHOCOLATE CURLS AND GOLD DÉCOR.

OTHER INFORMATION

Value Added Tax Rate

0%

CONTACT INFORMATION

Address

Waldrons Patisserie Ltd
Units 1-5
Mardle Way
Buckfastleigh
Devon
TQ11 0NR
England

P: (Phone) 01364 643871

The information on the [Erudus System](#) has been supplied by the manufacturers of the products and, whilst the owners of the Erudus System take steps to ensure the information is regularly updated, they give no warranty and no guarantee that the information is accurate. Product information and ingredients may change, please always read product labels carefully in addition to using the information provided by Erudus.

We do not accept liability for any inaccuracies or incorrect information contained on this site.
Please visit <http://www.erudus.com/terms-and-conditions> for full terms and conditions.