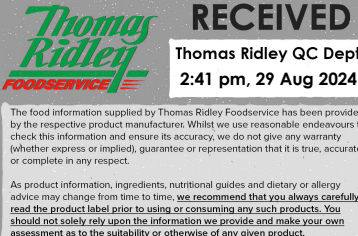


Changed Aug 29, 2024 11:49

Reviewed Aug 29, 2024 11:49

Erudus ID 0e5a3a2106a048969bb09823e8fdc04b

Version 3.0



Thomas Ridley
FOODSERVICE

RECEIVED
Thomas Ridley QC Dept.
2:41 pm, 29 Aug 2024

The food information supplied by Thomas Ridley Foodservice has been provided by the respective product manufacturer. Whilst we use reasonable endeavours to check this information and ensure its accuracy, we do not give any warranty (whether express or implied), guarantee or representation that it is true, accurate or complete in any respect.

As product information, ingredients, nutritional guides and dietary or allergy advice may change from time to time, we recommend that you always carefully read the product label prior to using or consuming any such products. You should not solely rely upon the information we provide and make your own assessment as to the suitability or otherwise of any given product.



13158

VEGAN TOFFEE AND SPICED APPLE CAKE (14 PTN)

Vegan Toffee And Spiced Apple Cake

PRODUCT DESCRIPTION

A moist Vegan Sponge, flavoured with Apple and Cinnamon, finished with a Vegan frosting and toffee flavoured icing

| | |
|----------------------------------|----------------------------------|
| Brand | Waldrons Patisserie Ltd |
| Manufacturer Product Code | PS2001V |
| Product Type | Food |
| Product Category | Desserts |
| Storage Type | Frozen |
| Erudus ID | 0e5a3a2106a048969bb09823e8fdc04b |
| Specification Type | Bakery Products |



Outer Case GTIN 5060667011363



INGREDIENTS

Ingredient Declaration

Vegan Sponge (77%) Vegan sponge mix (44%) WHEAT flour(GLUTEN), Sugar, Vegetable oil (rapeseed), Dextrose, Raising Agent Diphosphates, Sodium Carbonates, Glucono-delta-lactone, Calcium Phosphates, Maize Starch, Flavouring, Preservative (Potassium Sorbate), Acidity Regulator (Tartaric Acid), Water, Rapeseed oil, Glycerine, Cinnamon(0.9%), Sodium Hydrogen Carbonate, Caramel Colour,

Bramley Apple filling (15%) (Bramley apples (75%), Water, Sugar, Dextrose, Starch, Preservative (E223 (SULPHITES), E202)),

Icing Sugar, Margarine (Vegetable Oils)(Palm, Rape), Golden Syrup (Partially inverted refiners syrup (SULPHITES),

Toffee flavoured icing(11%) sugar, vegetable oil(palm, rapeseed), water, dried glucose syrup, glucose syrup, emulsifier (polyoxyethylene sorbitone monostearate, sucrose esters of fatty acids, mono and di-glycerides of fatty acids), glycerine, colour (Caramel), flavouring, preservative (potassium Sorbate, Citric acid))

ALLERGENS

Product Contains:

| | | | |
|---|-----|--------------------------------------|-------------|
| Celery/Celeriac | No | Mustard | No |
| Cereals Containing Gluten | Yes | Nuts (Tree) | May Contain |
| Barley | No | Almond nuts | May Contain |
| Oats | No | Brazil nuts | No |
| Rye | No | Cashew nuts | No |
| Wheat (including Spelt and Khorasan) | Yes | Hazelnuts | May Contain |
| Crustacea | No | Macadamia (Queensland) nuts | No |
| Eggs | No | Pecan nuts | No |
| Fish | No | Pistachio nuts | No |
| Lupin | No | Walnuts | No |
| Milk | No | Peanuts | No |
| Molluscs | No | Sesame Seeds | No |
| | | Soybeans | No |
| | | Sulphur Dioxide and Sulphites | No |

Risk Source:

SUPPLEMENTARY INGREDIENT INFORMATION

| | |
|---------------------------------------|-----|
| Palm Oil | Yes |
| Hydrogenated Vegetable Oil/Fat | No |
| GM Protein/DNA | No |

ADDITIVES

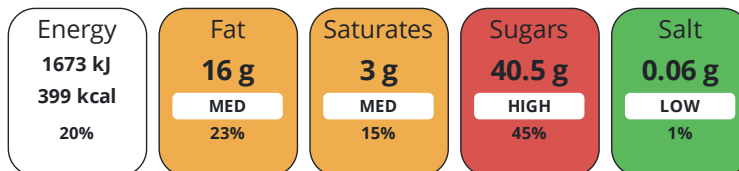
Product Contains:

| | | | |
|-------------------------------------|--------------|---------------------------------|--------------|
| Artificial Antioxidants | No | Artificial Flavourings | No |
| Artificial Colours | No | Artificial Preservatives | No |
| Artificial Flavour Enhancers | No | Artificial Sweeteners | No |
| Vegan Diet | Suitable for | Vegetarian Diet | Suitable for |
| Halal Diet | No | Kosher Diet | No |

DIET SUITABILITY

NUTRITIONAL INFORMATION

Each 100g/ml portion contains:



of your reference intake.

Typical values per 100g/ml : Energy 399kcal / 1673kj

| Nutrient | per 100g | RI per 100g | per 135g serving | RI per 135g serving |
|---------------------------|----------|-------------|------------------|---------------------|
| Energy (kJ) | 1673 kJ | 20% | 2258.6 kJ | 27% |
| Energy (kcal) | 399 kcal | 20% | 538.7 kcal | 27% |
| Fat | 16 g | 23% | 21.6 g | 31% |
| of which Saturates | 3 g | 15% | 4.1 g | 21% |
| Carbohydrate | 62.7 g | 24% | 84.6 g | 33% |
| of which Sugars | 40.5 g | 45% | 54.7 g | 61% |
| Fibre | 0.4 g | | 0.5 g | |
| Protein | 2.2 g | 4% | 3 g | 6% |
| Salt | 0.06 g | 1% | 0.1 g | 2% |

Serving Size 135 g

SUPPLEMENTARY
NUTRITIONAL
INFORMATION

HANDLING &
STORAGE
INFORMATION

Directions For Use

To defrost, remove all packaging, place on a suitable dish, defrost fully in a refrigerator. serve from chilled, consume within 48hrs

Storage Instructions

store at -18°C or below

Shelf Life from Time of Production 540 Days

ACCREDITATIONS/
CERTIFICATIONS/
ASSURANCE
SCHEMES
ORIGIN

SALSA (Safe & Local Supplier Approval)

Product Country of Origin/Place of United Kingdom

Provenance

Standards Testing

PRODUCT
CHARACTERISTICS

Do you undertake trend analysis of microbiological results? Yes **Is shelf life testing undertaken?** Yes

Microbiological Standards

| Organism | Description | Frequency | Target | Maximum | Sample (g or ml) |
|--|-------------|-----------|--------|---------|------------------|
| E. Coli (cfu/g or ml) | | Monthly | <10 | 10 | 25 |
| Enterobacteriaceae (cfu/g or ml) | | Monthly | <100 | 1000 | 25 |
| Listeria Monocytogenes (cfu/g or ml) | | Monthly | <0 | 0 | 25 |
| Staphylococcus Aureus (cfu/g or ml) | | Monthly | <10 | 100 | 25 |
| Total Viable Count (TVC) (cfu/g or ml) | | Monthly | <10000 | 500000 | 25 |
| Salmonella (cfu/g or ml) | | Monthly | <0 | 0 | 25 |

CONFIGURATION

Case Configuration

Inner Pack Configuration

Total Quantity of Inner Components in 1 Units

Outer Case

Is the Outer Case Splittable? No

PRODUCT
WEIGHTS

Inner Component

Variable Weight Consumer Item Yes

Outer Case

Outer Case Gross Weight 2.1 kg

Outer Case Net Weight 1.9 kg

PRODUCT DIMENSIONS

| | |
|-------------------------------|--------|
| Inner Component | |
| Inner Component Depth | 0 mm |
| Inner Component Width | 0 mm |
| Inner Component Height | 0 mm |
| Outer Case | |
| Outer Case Depth | 291 mm |
| Outer Case Width | 291 mm |
| Outer Case Height | 96 mm |

PALLET INFORMATION

| | | | |
|---|-----------|----------------------------|--------------------|
| Quantity of Cases Per Pallet Layer | 12 Cases | Pallet Type | UK Standard Pallet |
| Quantity of Layers Per Pallet | 15 Layers | Pallet Height | 1.46 MTR |
| Quantity of Cases Per Pallet | 180 Cases | Pallet Gross Weight | 410 kg |

PACKAGING

| Inner Component Packaging | | | | | | |
|---------------------------|-----------------|---------|--------------------|------------|------------|-----------|
| Type | Materials | Weight | Recycled Plastic % | Recyclable | Returnable | Composite |
| Bag | Plastic | 3 g | - % | | | |
| Bag | Paper/Cardboard | 15 g | - % | | | |
| Outer Case Packaging | | | | | | |
| Type | Materials | Weight | Recycled Plastic % | Recyclable | Returnable | Composite |
| Case | Paper/Cardboard | 185 g | - % | | | |
| Transport Packaging | | | | | | |
| Type | Materials | Weight | Recycled Plastic % | Recyclable | Returnable | Composite |
| Other | Plastic | 500 g | - % | | | |
| Other | Paper/Cardboard | 1000 g | - % | | | |
| Other | Wood | 30000 g | - % | | | |

OTHER INFORMATION

Manufacturer Comments
 Minimum order quantity of 180 cases, may be configured from mixed products

CONTACT INFORMATION

Address
 Waldrons Patisserie Ltd
 Units 1-5
 Mardle Way
 Buckfastleigh
 Devon
 TQ11 0NR
 England

 P: (Phone) 01364 643871

The information on the [Erudus System](#) has been supplied by the manufacturers of the products and, whilst the owners of the Erudus System take steps to ensure the information is regularly updated, they give no warranty and no guarantee that the information is accurate. Product information and ingredients may change, please always read product labels carefully in addition to using the information provided by Erudus.

We do not accept liability for any inaccuracies or incorrect information contained on this site.
 Please visit <http://www.erudus.com/terms-and-conditions> for full terms and conditions.