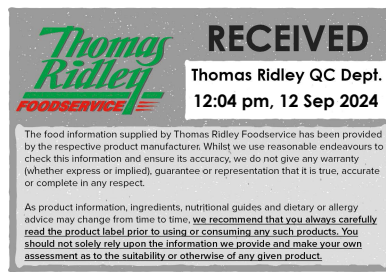


Changed May 20, 2024 13:58

Reviewed May 20, 2024 13:58

Erudus ID 10781e8e1d6c4e9ba73d93d10b121709

Version 2.2



# Wibble Forest Fruit Vegan Jelly Crystals

Forest Fruit Flavour Vegan Jelly Crystals 4x1900g

## PRODUCT DESCRIPTION

Forest Fruit vegan jelly crystals

<b>Brand</b>	Wibble
<b>Manufacturer Product Code</b>	WibbleFFruit1.9kg
<b>Product Type</b>	Food
<b>Product Category</b>	Desserts
<b>Storage Type</b>	Ambient
<b>Erudus ID</b>	10781e8e1d6c4e9ba73d93d10b121709
<b>Specification Type</b>	Generic



<b>Inner Component GTIN</b>	5060666570441
<b>Outer Case GTIN</b>	05060666570830



## INGREDIENTS

### Ingredient Declaration

Sweeteners (Erythritol, Stevia Extract), Fruit Sugar, Acidity Regulators (Potassium Citrate, Citric Acid), Gelling Agent: Carrageenan, Natural Forest Fruits Flavouring, Natural Colouring (Red Beet).

## ALLERGENS

Product Contains:

<b>Celery/Celery</b>	No	<b>Mustard</b>	No
<b>Cereals Containing Gluten</b>	No	<b>Nuts (Tree)</b>	No
<b>Barley</b>	No	<b>Almond nuts</b>	No
<b>Oats</b>	No	<b>Brazil nuts</b>	No
<b>Rye</b>	No	<b>Cashew nuts</b>	No
<b>Wheat (including Spelt and Khorasan)</b>	No	<b>Hazelnuts</b>	No
<b>Crustacea</b>	No	<b>Macadamia (Queensland) nuts</b>	No
<b>Eggs</b>	No	<b>Pecan nuts</b>	No
<b>Fish</b>	No	<b>Pistachio nuts</b>	No
<b>Lupin</b>	No	<b>Walnuts</b>	No
<b>Milk</b>	No	<b>Peanuts</b>	No
<b>Molluscs</b>	No	<b>Sesame Seeds</b>	No
		<b>Soybeans</b>	No
		<b>Sulphur Dioxide and Sulphites</b>	No

## SUPPLEMENTARY INGREDIENT INFORMATION

<b>Palm Oil</b>	No
<b>Hydrogenated Vegetable Oil/Fat</b>	No
<b>GM Protein/DNA</b>	No

ADDITIVES

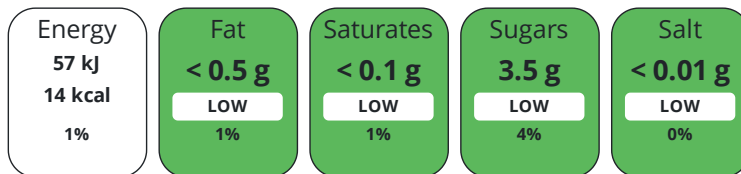
Product Contains:

<b>Artificial Antioxidants</b>	No	<b>Artificial Flavourings</b>	No
<b>Artificial Colours</b>	No	<b>Artificial Preservatives</b>	No
<b>Artificial Flavour Enhancers</b>	No	<b>Artificial Sweeteners</b>	No
<b>Vegan Diet</b>	Suitable for	<b>Vegetarian Diet</b>	Suitable for
<b>Halal Diet</b>	Suitable for	<b>Kosher Diet</b>	Suitable for

DIET SUITABILITY

NUTRITIONAL INFORMATION

Each 100g/ml portion contains:



of your reference intake.

Typical values per 100g/ml : Energy 14kcal / 57kj

Nutrient	per 100g	RI per 100g	per 110ml of prepared product
<b>Energy (kJ)</b>	57 kJ	1%	-
<b>Energy (kcal)</b>	14 kcal	1%	-
<b>Fat</b>	< 0.5 g	1%	0 g
<b>of which Saturates</b>	< 0.1 g	1%	0 g
<b>of which Mono-unsaturates</b>	< 0.1 g		-
<b>of which Polyunsaturates</b>	< 0.1 g		-
<b>Carbohydrate</b>	8.5 g	3%	-
<b>of which Sugars</b>	3.5 g	4%	-
<b>Fibre</b>	< 0.5 g		-
<b>Protein</b>	< 0.5 g	1%	< 0.5 g
<b>Salt</b>	< 0.01 g	0%	< 0.5 g
<b>Sodium</b>	< 0.01 mg		< 0.5 mg

**Prepared Product Details**

When mixed with boiling water.

<b>Number of Servings</b>	175 Servings
---------------------------	--------------

SUPPLEMENTARY NUTRITIONAL INFORMATION

HANDLING & STORAGE INFORMATION

**Directions For Use**

Dissolve jelly crystals in boiling water. Stir well until completely dissolved. Wait 1 hour until cool. Pop in the fridge to fully set. Use 54g of crystals with 540ml of water to make 569ml of jelly. Use 95g of crystals with 950ml of water to make 1 litre of jelly. Use 1.9kg (full bag) of crystals with 19 litres of water to make 20 litres of jelly.

**Storage Instructions**

Store in a cool, dry place.

<b>Shelf Life from Time of Production</b>	400 Days
---	----------

ACCREDITATIONS/ CERTIFICATIONS/ ASSURANCE SCHEMES

<b>BRCGS Certified</b>	<b>BRCGS Food Safety</b>
------------------------	--------------------------

ORIGIN	<b>Product Country of Origin/Place of Provenance</b>	United Kingdom						
PRODUCT CHARACTERISTICS CONFIGURATION	Standards Testing							
	Case Configuration	Inner Pack Configuration						
	<b>Variable Inner Components in Outer Case</b>	No						
	<b>Total Quantity of Inner Components in Outer Case</b>	4 Units						
	<b>Is the Outer Case Splittable?</b>	Yes						
PRODUCT WEIGHTS	Inner Component							
	<b>Variable Weight Consumer Item</b>	No						
	<b>Inner Component Weight</b>	1900 g						
	Outer Case							
	<b>Outer Case Gross Weight</b>	8 kg						
	<b>Outer Case Net Weight</b>	7.6 kg						
PRODUCT DIMENSIONS	Inner Component							
	<b>Inner Component Depth</b>	211 mm						
	<b>Inner Component Width</b>	135 mm						
	<b>Inner Component Height</b>	88 mm						
	Outer Case							
	<b>Outer Case Depth</b>	185 mm						
	<b>Outer Case Width</b>	260 mm						
	<b>Outer Case Height</b>	200 mm						
	PALLET INFORMATION	<b>Quantity of Cases Per Pallet Layer</b>	19 Cases	<b>Pallet Height</b>	1.8 MTR			
		<b>Quantity of Layers Per Pallet</b>	5 Layers	<b>Pallet Gross Weight</b>	182 kg			
<b>Quantity of Cases Per Pallet</b>		95 Cases						
PACKAGING	Inner Component Packaging							
	<b>Type</b>	<b>Materials</b>	<b>Weight</b>	<b>Recycled Plastic %</b>	<b>Recyclable</b>	<b>Returnable</b>	<b>Composite</b>	
	Bag	Plastic	10 g	- %	Yes			
	Outer Case Packaging							
	<b>Type</b>	<b>Materials</b>	<b>Weight</b>	<b>Recycled Plastic %</b>	<b>Recyclable</b>	<b>Returnable</b>	<b>Composite</b>	
	Box	Paper/Cardboard	100 g	- %	Yes	No		
	MARKETING INFORMATION	<b>Marketing Description</b>						
		Quick set, low sugar, plant based jelly made from natural ingredients with nothing artificial. Mix with boiling water, one bag makes 20 litres of jelly, sets outside of the fridge, school and HFSS compliant.						
	OTHER INFORMATION	<b>Value Added Tax Rate</b>					No VAT	

CONTACT  
INFORMATION

Address

Wibble Foods Ltd  
Runway East  
52 Tabernacle Street  
London  
London  
EC2A 4NJ  
United Kingdom

P: (Phone) 07380797097

Technical Contact

Laura Friederich  
Founder  
laura@wibblefoods.co.uk

P: (Phone) 07312269929

Commercial Contact

Jessica Felton-Page  
Head of Sales  
jessica@wibblefoods.co.uk

P: (Phone) 07380797097

The information on the [Erudus System](#) has been supplied by the manufacturers of the products and, whilst the owners of the Erudus System take steps to ensure the information is regularly updated, they give no warranty and no guarantee that the information is accurate. Product information and ingredients may change, please always read product labels carefully in addition to using the information provided by Erudus.

We do not accept liability for any inaccuracies or incorrect information contained on this site.  
Please visit <http://www.erudus.com/terms-and-conditions> for full terms and conditions.