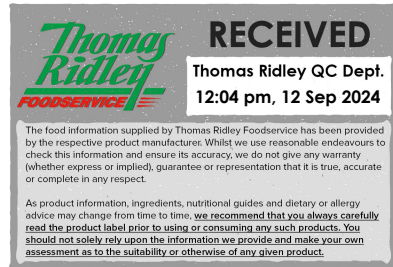


Changed Sep 12, 2024 10:56

Reviewed Sep 12, 2024 10:56

Erudus ID e0c425dac295482db2f7c52db484c6c6

Version 4.0



Thomas Ridley QC Dept.
12:04 pm, 12 Sep 2024

The food information supplied by Thomas Ridley Foodservice has been provided by the respective product manufacturer. Whilst we use reasonable endeavours to check this information and ensure its accuracy, we do not give any warranty (whether express or implied), guarantee or representation that it is true, accurate or complete in any respect.

As product information, ingredients, nutritional guides and dietary or allergy advice may change from time to time, we recommend that you always carefully read the product label prior to using or consuming any such products. You should not solely rely upon the information we provide and make your own assessment as to the suitability or otherwise of any given product.



13255

Wibble Raspberry Vegan Jelly Crystals

Raspberry Flavour Vegan Jelly Crystals

PRODUCT DESCRIPTION

Raspberry vegan jelly crystals

Brand	Wibble
Manufacturer Product Code	WibbleRaspb1.9kg
Product Type	Food
Product Category	Desserts
Storage Type	Ambient
Erudus ID	e0c425dac295482db2f7c52db484c6c6
Specification Type	Generic



Inner Component GTIN	5060666570410
Outer Case GTIN	5060666570823



INGREDIENTS

Ingredient Declaration

Sweeteners (Erythritol, Stevia Extract), Fruit Sugar, Acidity Regulators (Potassium Citrate, Citric Acid), Gelling Agent: Carrageenan, Natural Raspberry Flavouring, Natural Colouring (Red Beet).

ALLERGENS

Product Contains:

Celery/Celeriac	No	Mustard	No
Cereals Containing Gluten	No	Nuts (Tree)	No
Barley	No	Almond nuts	No
Oats	No	Brazil nuts	No
Rye	No	Cashew nuts	No
Wheat (including Spelt and Khorasan)	No	Hazelnuts	No
Crustacea	No	Macadamia (Queensland) nuts	No
Eggs	No	Pecan nuts	No
Fish	No	Pistachio nuts	No
Lupin	No	Walnuts	No
Milk	No	Peanuts	No
Molluscs	No	Sesame Seeds	No
		Soybeans	No
		Sulphur Dioxide and Sulphites	No

SUPPLEMENTARY
INGREDIENT
INFORMATION

Palm Oil	No
Hydrogenated Vegetable Oil/Fat	No
GM Protein/DNA	No

ADDITIVES

Product Contains:

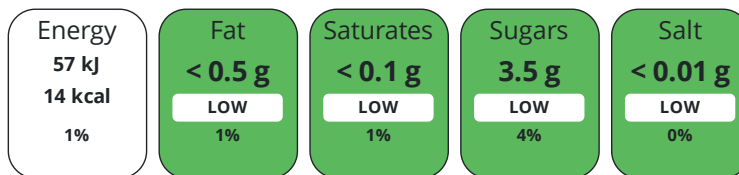
Artificial Antioxidants	No	Artificial Flavourings	No
Artificial Colours	No	Artificial Preservatives	No
Artificial Flavour Enhancers	No	Artificial Sweeteners	No

DIET
SUITABILITY

Vegan Diet	Suitable for	Vegetarian Diet	Suitable for
-------------------	--------------	------------------------	--------------

NUTRITIONAL
INFORMATION

Each 100g/ml portion contains:



of your reference intake.

Typical values per 100g/ml : Energy 14kcal / 57kj

Nutrient	per 100g	RI per 100g	per 110ml of prepared product
Energy (kJ)	57 kJ	1%	-
Energy (kcal)	14 kcal	1%	-
Fat	< 0.5 g	1%	0 g
of which Saturates	< 0.1 g	1%	0 g
of which Mono-unsaturates	< 0.1 g	-	-
of which Polyunsaturates	< 0.1 g	-	-
Carbohydrate	8.5 g	3%	-
of which Sugars	3.5 g	4%	-
Fibre	< 0.5 g	-	-
Protein	< 0.5 g	1%	< 0.5 g
Salt	< 0.01 g	0%	< 0.5 g
Sodium	< 0.01 mg	-	-

Prepared Product Details

When mixed with boiling water.

Number of Servings	175 Servings
---------------------------	--------------

SUPPLEMENTARY
NUTRITIONAL
INFORMATION

HANDLING &
STORAGE
INFORMATION

Directions For Use

Dissolve jelly crystals in boiling water. Stir well until completely dissolved. Wait 1 hour until cool. Pop in the fridge to fully set. Use 54g of crystals with 540ml of water to make 569ml of jelly. Use 95g of crystals with 950ml of water to make 1 litre of jelly. Use 1.9kg (full bag) of crystals with 19 litres of water to make 20 litres of jelly.

Storage Instructions

Store in a cool, dry place.

Shelf Life from Time of Production	400 Days
---	----------

ACCREDITATIONS/
CERTIFICATIONS/
ASSURANCE
SCHEMES
ORIGIN

BRCGS Certified

BRCGS Food Safety

Product Country of Origin/Place of United Kingdom

Provenance

PRODUCT
CHARACTERISTICS
CONFIGURATION

Standards Testing

Case Configuration

Inner Pack Configuration

Variable Inner Components in Outer Case No

Total Quantity of Inner Components in 4 Units

Outer Case

Is the Outer Case Splittable? Yes

PRODUCT
WEIGHTS

Inner Component

Variable Weight Consumer Item Yes

Inner Component Weight 1900 g

Outer Case

Outer Case Gross Weight 8 kg

Outer Case Net Weight 7.6 kg

PRODUCT
DIMENSIONS

Inner Component

Inner Component Depth 211 mm

Inner Component Width 135 mm

Inner Component Height 88 mm

Outer Case

Outer Case Depth 185 mm

Outer Case Width 260 mm

Outer Case Height 200 mm

PALLET
INFORMATION

Quantity of Cases Per Pallet Layer 19 Cases

Pallet Height 1.8 MTR

Quantity of Layers Per Pallet 5 Layers

Pallet Gross Weight 182 kg

Quantity of Cases Per Pallet 95 Cases

PACKAGING

Inner Component Packaging

Type	Materials	Weight	Recycled Plastic %	Recyclable	Returnable	Composite
Bag	Plastic	10 g	- %	Yes		

Outer Case Packaging

Type	Materials	Weight	Recycled Plastic %	Recyclable	Returnable	Composite
Box	Paper/Cardboard	100 g	- %	Yes	No	

MARKETING
INFORMATION

Marketing Description

Quick set, low sugar, plant based jelly made from natural ingredients with nothing artificial. Mix with boiling water, one bag makes 20 litres of jelly, sets outside of the fridge, school and HFSS compliant.

OTHER
INFORMATION

Value Added Tax Rate No VAT

CONTACT
INFORMATION

Address

Wibble Foods Ltd
Runway East
52 Tabernacle Street
London
London
EC2A 4NJ
United Kingdom

P: (Phone) 07380797097

Technical Contact

Laura Friederich
Founder
laura@wibblefoods.co.uk

P: (Phone) 07312269929

Commercial Contact

Jessica Felton-Page
Head of Sales
jessica@wibblefoods.co.uk

P: (Phone) 07380797097

The information on the [Erudus System](#) has been supplied by the manufacturers of the products and, whilst the owners of the Erudus System take steps to ensure the information is regularly updated, they give no warranty and no guarantee that the information is accurate. Product information and ingredients may change, please always read product labels carefully in addition to using the information provided by Erudus.

We do not accept liability for any inaccuracies or incorrect information contained on this site.
Please visit <http://www.erudus.com/terms-and-conditions> for full terms and conditions.