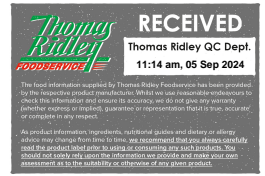


Changed Apr 17, 2024 08:03
Reviewed Apr 17, 2024 08:03
Erudus ID f2ceea32798b4790a581bd4bba08d561
Version 6.0



Crispy Turkey Pops 3x1kg

Crispy Turkey Pops 3x1kg

PRODUCT DESCRIPTION

Chopped and Formed Turkey Breast Meat with Crispy Breaded Coating

Brand	RIVERSIDE
Manufacturer Product Code	TP702A
Product Type	Food
Product Category	Chicken & Turkey
Storage Type	Frozen
Erudus ID	f2ceea32798b4790a581bd4bba08d561
Specification Type	Meat



Inner Component GTIN	3850159168376
Manufacturer Component Code	TP702A
Outer Case GTIN	03850159168376



INGREDIENTS

Ingredient Declaration

Turkey (55%), **WHEAT**Flour, Water, Rapeseed Oil, **SOYA**, Maize, **BARLEY** Malt Extract, Salt, Sugar, Yeast, Natural Spices, Flavour Enhancer (E621), Pea, Spices, Flavouring (Onion)

ALLERGENS

Product Contains:

Celery/Celeriac	No
Cereals Containing Gluten	Yes
Barley	Yes
Oats	No
Rye	No
Wheat (including Spelt and Khorasan)	Yes
Crustacea	No
Eggs	No
Fish	No
Lupin	No
Milk	No
Molluscs	No
Mustard	No
Nuts (Tree)	No
Almond nuts	No
Brazil nuts	No
Cashew nuts	No
Hazelnuts	No
Macadamia (Queensland) nuts	No
Pecan nuts	No
Pistachio nuts	No
Walnuts	No
Peanuts	No
Sesame Seeds	No
Soybeans	Yes
Sulphur Dioxide and Sulphites	No

SUPPLEMENTARY INGREDIENT INFORMATION

Palm Oil	No
Hydrogenated Vegetable Oil/Fat	No
GM Protein/DNA	No

ADDITIVES

Product Contains:

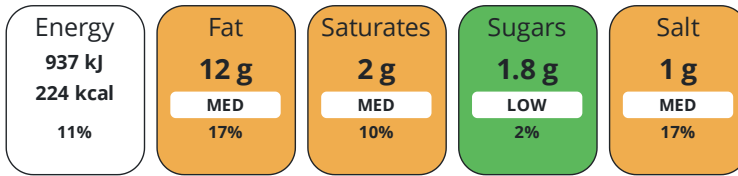
Artificial Antioxidants	No
Artificial Colours	No
Artificial Flavour Enhancers	No
Artificial Flavourings	No
Artificial Preservatives	No
Artificial Sweeteners	No

DIET SUITABILITY

Halal Diet	Suitable for	Kosher Diet	No
-------------------	--------------	--------------------	----

NUTRITIONAL INFORMATION

Each 100g/ml portion contains:



of your reference intake.

Typical values per 100g/ml : Energy 224kcal / 937kj

Nutrient	per 100g	RI per 100g	per 100g serving	RI per 100g serving
Energy (kJ)	937 kJ	11%	937 kJ	11%
Energy (kcal)	224 kcal	11%	224 kcal	11%
Fat	12 g	17%	12 g	17%
of which Saturates	2 g	10%	2 g	10%
Carbohydrate	15 g	6%	15 g	6%
of which Sugars	1.8 g	2%	1.8 g	2%
Protein	14 g	28%	14 g	28%
Salt	1 g	17%	1 g	17%
Serving Size	100 g			

Source of Nutritional Information Calculation from known/accepted datasets

SUPPLEMENTARY NUTRITIONAL INFORMATION

HANDLING & STORAGE INFORMATION

Directions For Use

(from frozen / defrost) – recommend cook from frozen To oven bake: Place on a baking sheet in a pre-heated fan assisted oven (200°C)Cook for 12-15 minutes, turning once To Deep Fry: Fry in hot oil (180°C) for 2-3 minutes, drain and serve To Microwave: Cook on high for 1 - 2 minutes To Air Fry: Air Fry @ (180°C) for 9 minutes, drain and serve

Storage Instructions

Product Shelf Life – 18months from date of production Product Shelf Life after defrosting – cook within 24 hours

Shelf Life from Time of Production 540 Days

Exempt From Shelf Life Labelling No

ACCREDITATIONS/ CERTIFICATIONS/ ASSURANCE SCHEMES

BRCGS Certified

IFS Food Standard

ORIGIN

Product Country of Origin/Place of Croatia

Provenance

Additional Origin Details

Croatia

PRODUCT CHARACTERISTICS

Standards Testing

Microbiological Standards

Organism	Description	Frequency	Target	Maximum	Sample (g or ml)
Total Viable Count (TVC) (cfu/g or ml)		Every Batch	<10000	100000	100
Enterobacteriaceae (cfu/g or ml)		Every Batch	<10000	10000	100
E. Coli (cfu/g or ml)		Every Batch	<20	100	100
Salmonella (cfu/g or ml)		Every Batch	=0	0	25

Organism	Description	Frequency	Target	Maximum	Sample (g or ml)
Listeria SPP (cfu/g or ml)		Every Batch	=0	0	25
Staphylococcus Aureus (cfu/g or ml)		Every Batch	<20	100	100
Clostridium Perfringens (cfu/g or ml)		Every Batch	<20	100	100

SUPPLEMENTARY INFORMATION

Desinewed Meat	No	Reformed	Yes
Skeletal Bones	No	Fried During Manufacture	Yes
Skin	Yes	Closure Type	heat sealed
Cut Details	BREAST FILLET		

HAZARD CONTROLS

Metal Detection	Yes	X-ray	Yes
------------------------	-----	--------------	-----

CONFIGURATION

Case Configuration

Total Quantity of Inner Components in Outer Case	3 Units
Is the Outer Case Splittable?	No
Inner Pack Configuration	
Count per Inner Component	3

PRODUCT WEIGHTS

Inner Component

Variable Weight Consumer Item	No
Inner Component Weight	1 kg

Outer Case

Outer Case Gross Weight	3.2 kg
Outer Case Net Weight	3 kg

PRODUCT DIMENSIONS

Inner Component

Inner Component Depth	230 mm
Inner Component Width	951 mm
Inner Component Height	105 mm

Outer Case

Outer Case Depth	285 mm
Outer Case Width	230 mm
Outer Case Height	130 mm

PALLET INFORMATION

Quantity of Cases Per Pallet Layer	16 Cases
Quantity of Layers Per Pallet	15 Layers
Quantity of Cases Per Pallet	240 Cases
Pallet Height	2.1 MTR
Pallet Gross Weight	768 kg

PACKAGING

Inner Component Packaging

Type	Materials	Weight	Recycled Plastic %	Recyclable	Returnable	Composite
Bag	Plastic	6 g	- %			

Outer Case Packaging

Type	Materials	Weight	Recycled Plastic %	Recyclable	Returnable	Composite
Case	Paper/Cardboard	194 g	- %			

Transport Packaging

Type	Materials	Weight	Recycled Plastic %	Recyclable	Returnable	Composite
Other	Plastic	500 g	- %			
Other	Paper/Cardboard	10 g	- %			
Other	Wood	20000 g	- %			

OTHER INFORMATION

Intrastat/Taric Code	0
Identification/Health Marks	HR61EU

Manufacturer Comments

Minimum quantities of 208 cases

CONTACT INFORMATION

Address

Riverside Food Services
Units 1-5, The Stables
Sutton Farm, West Felton
Oswestry
Shropshire
SY11 4HX
United Kingdom

P: (Phone) 01691839288

Technical Contact

James Gedling
Technical Manager
jamesgedling@riversidefoods.co.uk

P: (Phone) 01691880019

Complaints Contact

James Gedling
Technical Manager
jamesgedling@riversidefoods.co.uk

P: (Phone) 01691839288

Commercial Contact

Leigh T Morris
Managing Director
LeighMorris@Riversidefoods.co.uk

P: (Phone) 01691 839288

The information on the [Erudus System](#) has been supplied by the manufacturers of the products and, whilst the owners of the Erudus System take steps to ensure the information is regularly updated, they give no warranty and no guarantee that the information is accurate. Product information and ingredients may change, please always read product labels carefully in addition to using the information provided by Erudus.

We do not accept liability for any inaccuracies or incorrect information contained on this site.
Please visit <http://www.erudus.com/terms-and-conditions> for full terms and conditions.