

Changed Aug 14, 2024 09:38

Reviewed Aug 14, 2024 09:38

Erudus ID 11823dc0dac44b3893802c18e9ebb824

Version 1.0



Level 6 (soft & bitesize) Individual frozen meals

Level 6 (Soft & Bitesize) Mixed Individual Frozen Meals (Multipack)

PRODUCT DESCRIPTION

Level 6 (Soft & Bitesized) individual complete frozen meals. 12 in a case 4 of each per case

Brand	Simply Food Solutions
Manufacturer Product Code	L6MIXC
Product Type	Food
Product Category	Ready Meals
Storage Type	Frozen
Erudus ID	11823dc0dac44b3893802c18e9ebb824
Specification Type	Generic

SOFT25 Chicken Casserole (with diced potato in parsley sauce and carrots)

Manufacturer Component Code	SOFT25
Outer Case GTIN	5060221530156



INGREDIENTS

Ingredient Declaration

Carrot (23%), Water, Chicken (17%) (Chicken, Water, Salt, #MILK# Protein, Lactose (#MILK#), #SOYA# Protein, Stabilisers: Sodium Polyphosphate And Sodium Citrate, Thickener: Carrageenan, Gelling Agent: Potassium Chloride), Potato (12%), #MILK#, Cream (#MILK#), Onion, Swede (2%), Modified starch, Butter Oil (Vegetable Oil [rape, Palm], Salt, Emulsifier: E322, Flavouring: Butter Oil (#MILK#), Colour: E160a), Leeks (1%), Bechamel (Whey (#MILK#), Skimmed #MILK#, Vegetable Oils (Palm, Fully Hydrogenated Coconut), Modified Starch, Salt, Firming Agent (Disodium Phosphate, Tetrasodium Diphosphate, Calcium Sulphate), Gelling Agent (Sodium Alginate), Sugar, Spices (Pepper, Nutmeg), Colour: Beta Carotene), Salt, Herb And Spice, Gravy Browning (Water, Colour: E150c, Salt), Gravy (Modified Maize Starch, Salt, Onion, Palm Oil, Colour: E150c, Whey (#MILK#), Hydrolysed Vegetable Protein [#SOYA# Protein, Maize Protein], Black Pepper), #SOYA#.

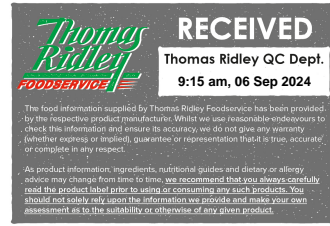
Ingredient Statements

For allergens, including cereals containing gluten, see ingredients in CAPITALS, May also contain, Sesame, nuts, celery, mustard and sulphites.

ALLERGENS

Product Contains:

Celery/Celery	May Contain	Mustard	No
Cereals Containing Gluten	May Contain	Nuts (Tree)	May Contain
Barley	No	Almond nuts	May Contain
Oats	May Contain	Brazil nuts	May Contain
Rye	No	Cashew nuts	May Contain
Wheat (including Spelt and Khorasan)	May Contain	Hazelnuts	May Contain
Crustacea	No	Macadamia (Queensland) nuts	May Contain
Eggs	No	Pecan nuts	May Contain
Fish	No	Pistachio nuts	May Contain
Lupin	No	Walnuts	May Contain
Milk	Yes	Peanuts	May Contain
Molluscs	No	Sesame Seeds	May Contain
		Soybeans	Yes
		Sulphur Dioxide and Sulphites	May Contain



Risk Source:

Celery/Celериac (Risk Source)	Raw Material
Oats (Risk Source)	Raw Material
Tree Nuts (Risk Source)	Raw Material
Brazil nuts (Risk Source)	Raw Material
Hazelnuts (Risk Source)	Raw Material
Pecan nuts (Risk Source)	Raw Material
Walnuts (Risk Source)	Raw Material
Sesame Seeds (Risk Source)	Raw Material

Cereals Containing Gluten (Risk Source)	Raw Material
Wheat (Risk Source)	Raw Material
Almond nuts (Risk Source)	Raw Material
Cashew nuts (Risk Source)	Raw Material
Macadamia nuts (Risk Source)	Raw Material
Pistachio nuts (Risk Source)	Raw Material
Peanuts (Risk Source)	Raw Material
Sulphur Dioxide and Sulphites (Risk Source)	Raw Material

Additional Allergen Information

For allergens, see ingredients in CAPITALS, May also contain nuts, sesame, soya, celery & mustard

SUPPLEMENTARY
INGREDIENT
INFORMATION

Palm Oil	Yes
Hydrogenated Vegetable Oil/Fat	No
GM Protein/DNA	No

ADDITIVES

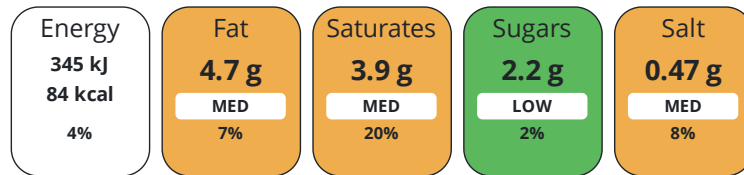
Product Contains:

DIET
SUITABILITY

Vegan Diet	No	Vegetarian Diet	No
Halal Diet	Certified		

NUTRITIONAL
INFORMATION

Each 100g/ml portion contains:



of your reference intake.

Typical values per 100g/ml : Energy 84kcal / 345kj

Nutrient	per 100g	RI per 100g	per 380g of prepared product
Energy (kJ)	345 kJ	4%	1345 kJ
Energy (kcal)	84 kcal	4%	318 kcal
Fat	4.7 g	7%	18 g
of which Saturates	3.9 g	20%	15 g
Carbohydrate	6.9 g	3%	26 g
of which Sugars	2.2 g	2%	8 g
Fibre	1.2 g		3.6 g
Protein	4.7 g	9%	1.8 g
Salt	0.47 g	8%	7.8 g
Sodium	188 mg		716 mg

Source of Nutritional Information Manufacturers analysis

SUPPLEMENTARY
NUTRITIONAL
INFORMATION

HANDLING & STORAGE INFORMATION

Directions For Use

HEAT FROM FROZEN, Microwave Heat at 700ww for 8-9 mins. Conventional oven: place in a pre-heated oven at 150.c of 35-40 mins. HEAT MEAL TO CORE OF MINIMUM 75'C, once heated do not re-heat

Storage Instructions

Store at -18.c or colder in a clean environment. Shelf life 15 months from manufacture. Do not stack more than 6 cases high on a full pallet. Loose individual products do not stack more than two high and always store inside a container/box. Handle with care as c-pet meal containers can become brittle in low temperatures and will shatter if mishandled /dropped

Shelf Life from Time of Production 450 Days

ACCREDITATIONS/ CERTIFICATIONS/ ASSURANCE SCHEMES ORIGIN

BRCGS Certified

Product Country of Origin/Place of United Kingdom

Provenance

PRODUCT CHARACTERISTICS

Standards Testing

Do you undertake trend analysis of microbiological results?	Yes	Is shelf life testing undertaken?	Yes
--------------------------------------------------------------------	-----	------------------------------------------	-----

CONFIGURATION

Case Configuration

Inner Pack Configuration

Total Quantity of Inner Components in Outer Case	12 Units	Quantity of Inner Components in Inner Pack	12
---------------------------------------------------------	----------	---------------------------------------------------	----

PRODUCT WEIGHTS

Inner Component

Variable Weight Consumer Item No

Inner Component Weight 380 g

Outer Case

Outer Case Gross Weight 5.04 kg

Outer Case Net Weight 4.56 kg

PRODUCT DIMENSIONS

Inner Component

Inner Pack

Inner Component Depth	193 mm	Inner Pack Depth	193 mm
------------------------------	--------	-------------------------	--------

Inner Component Width	193 mm	Inner Pack Width	193 mm
------------------------------	--------	-------------------------	--------

Inner Component Height	40 mm	Inner Pack Height	40 mm
-------------------------------	-------	--------------------------	-------

Outer Case

Outer Case Depth 385 mm

Outer Case Width 200 mm

Outer Case Height 235 mm

PALLET INFORMATION

Quantity of Cases Per Pallet Layer	7 Cases	Pallet Type	UK Standard Pallet
-------------------------------------------	---------	--------------------	--------------------

Quantity of Layers Per Pallet	15 Layers	Pallet Height	1.35 MTR
--------------------------------------	-----------	----------------------	----------

Quantity of Cases Per Pallet	105 Cases	Pallet Gross Weight	307.23 kg
-------------------------------------	-----------	----------------------------	-----------

PACKAGING

Inner Component Packaging

Type	Materials	Weight	Recycled Plastic %	Recyclable	Returnable	Composite
Poly Treated PET/PE	Plastic	10 g	- %	No		

Outer Case Packaging

Type	Materials	Weight	Recycled Plastic %	Recyclable	Returnable	Composite
Case	Paper/Cardboard	30 g	- %	Yes		

OTHER INFORMATION

SOFT31 Beef stew (and Dumpling with diced potato in parsley sauce and carrots)

Manufacturer Component Code SOFT31
 Outer Case GTIN 5060221530156



INGREDIENTS

Ingredient Declaration

Carrot (25%), Water, Beef (19%), Potato (12%), #MILK#, Onion, Cream (#MILK#), Modified Starch, Bechamel (Whey (#MILK#), Skimmed #MILK#, Vegetable Oils (Palm, Fully Hydrogenated Coconut), Modified Starch, Salt, Firming Agent (Disodium Phosphate, Tetrasodium Diphosphate, Calcium Sulphate), Gelling Agent (Sodium Alginate), Sugar, Spices (Pepper, Nutmeg), Colour: Beta Carotene, Butter Oil (Vegetable Oil [rape, Palm], Salt, Emulsifier: E322, Flavouring: Butter Oil (#MILK#), Colour: E160a), Dumpling (#WHEAT# Flour (Calcium Carbonate, Iron, Thiamin, Niacin), Water, Vegetable Suet (Non-Hydrogenated Vegetable Oil (Palm Oil, Sunflower Oil), #WHEAT# Flour (Calcium Carbonate, Iron, Thiamin, Niacin)), Baking Powder (Raising Agents E450i, E500ii, #WHEAT# Flour (Calcium Carbonate, Iron, Thiamin, Niacin)), Salt, Sage, Parsley, Tomato, Herb And Spice, Rapeseed Oil, Potato (Potato, Emulsifier: E471, Acidity Regulator: Citric acid, Preservative: Sodium #METABISULPHITE#), Salt, Gravy Browning (Water, Colour: E150c, Salt).

Ingredient Statements

For allergens, including cereals containing gluten, see ingredients in CAPITALS, May also contain, Sesame, nuts, celery, mustard and sulphites.

ALLERGENS

Product Contains:

Celery/Celeriac	May Contain	Mustard	No
Cereals Containing Gluten	Yes	Nuts (Tree)	May Contain
Barley	No	Almond nuts	May Contain
Oats	No	Brazil nuts	May Contain
Rye	No	Cashew nuts	May Contain
Wheat (including Spelt and Khorasan)	Yes	Hazelnuts	May Contain
Crustacea	No	Macadamia (Queensland) nuts	May Contain
Eggs	No	Pecan nuts	May Contain
Fish	No	Pistachio nuts	May Contain
Lupin	No	Walnuts	May Contain
Milk	Yes	Peanuts	May Contain
Molluscs	No	Sesame Seeds	May Contain
		Soybeans	No
		Sulphur Dioxide and Sulphites	Yes

Risk Source:

Celery/Celeriac (Risk Source)	Raw Material	Tree Nuts (Risk Source)	Raw Material
Almond nuts (Risk Source)	Raw Material	Brazil nuts (Risk Source)	Raw Material
Cashew nuts (Risk Source)	Raw Material	Hazelnuts (Risk Source)	Raw Material
Macadamia nuts (Risk Source)	Raw Material	Pecan nuts (Risk Source)	Raw Material
Pistachio nuts (Risk Source)	Raw Material	Walnuts (Risk Source)	Raw Material
Peanuts (Risk Source)	Raw Material	Sesame Seeds (Risk Source)	Raw Material

Additional Allergen Information

For allergens, see ingredients in CAPITALS, May also contain nuts, sesame, soya, celery & mustard

SUPPLEMENTARY INGREDIENT INFORMATION

Palm Oil	Yes
Hydrogenated Vegetable Oil/Fat	No
GM Protein/DNA	No

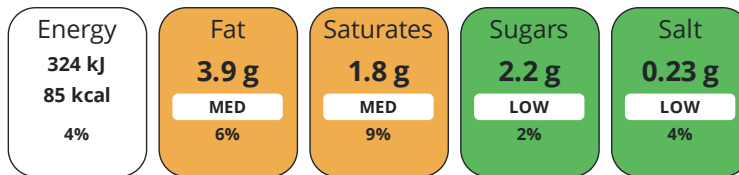
ADDITIVES

Product Contains:

DIET SUITABILITY

Vegan Diet	No	Vegetarian Diet	No
Halal Diet	Certified		

Each 100g/ml portion contains:



of your reference intake.

Typical values per 100g/ml : Energy 85kcal / 324kj

Nutrient	per 100g	RI per 100g	per 380g of prepared product
Energy (kJ)	324 kJ	4%	1375 kJ
Energy (kcal)	85 kcal	4%	347 kcal
Fat	3.9 g	6%	6.9 g
of which Saturates	1.8 g	9%	6.9 g
Carbohydrate	6.5 g	3%	25 g
of which Sugars	2.2 g	2%	8.3 g
Fibre	1 g		3.8 g
Protein	3.5 g	7%	20 g
Salt	0.23 g	4%	1.4 g
Sodium	195 mg		348 mg

Source of Nutritional Information Manufacturers analysis

SUPPLEMENTARY
NUTRITIONAL
INFORMATION

HANDLING &
STORAGE
INFORMATION

Directions For Use

HEAT FROM FROZEN, Microwave Heat at 700ww for 8-9 mins. Conventional oven: place in a pre-heated oven at 150.c of 35-40 mins. HEAT MEAL TO CORE OF MINIIMUM 75°C, once heated do not re-heat

Storage Instructions

HEAT FROM FROZEN, Microwave Heat at 700ww for 8-9 mins. Conventional oven: place in a pre-heated oven at 150.c of 35-40 mins. HEAT MEAL TO CORE OF MINIIMUM 75°C, once heated do not re-heat

Shelf Life from Time of Production 450 Days

ORIGIN

Product Country of Origin/Place of United Kingdom

Provenance

PRODUCT
CHARACTERISTICS

Standards Testing

Do you undertake trend analysis of microbiological results? Yes

Is shelf life testing undertaken? Yes

CONFIGURATION

Case Configuration

Inner Pack Configuration

Total Quantity of Inner Components in Outer Case 12 Units

Quantity of Inner Components in Inner Pack 12

PRODUCT
WEIGHTS

Inner Component

Variable Weight Consumer Item No

Inner Component Weight 380 g

Outer Case

Outer Case Gross Weight 5.04 kg

Outer Case Net Weight 4.56 kg

PRODUCT DIMENSIONS

Inner Component		Inner Pack	
Inner Component Depth	193 mm	Inner Pack Depth	193 mm
Inner Component Width	193 mm	Inner Pack Width	193 mm
Inner Component Height	40 mm	Inner Pack Height	40 mm
Outer Case			
Outer Case Depth	385 mm		
Outer Case Width	200 mm		
Outer Case Height	235 mm		

PALLET INFORMATION

Quantity of Cases Per Pallet Layer	7 Cases	Pallet Type	UK Standard Pallet
Quantity of Layers Per Pallet	15 Layers	Pallet Height	1.35 MTR
Quantity of Cases Per Pallet	105 Cases	Pallet Gross Weight	307.23 kg

PACKAGING

Inner Component Packaging						
Type	Materials	Weight	Recycled Plastic %	Recyclable	Returnable	Composite
Poly Treated PET/PE	Plastic	10 g	- %	No		
Outer Case Packaging						
Type	Materials	Weight	Recycled Plastic %	Recyclable	Returnable	Composite
Case	Paper/Cardboard	30 g	- %	Yes		

OTHER INFORMATION

SOFT26 Macaroni cheese (with diced potato in mustard sauce and carrots/ swede)

Manufacturer Component Code SOFT26
Outer Case GTIN 5060221530156



INGREDIENTS

Ingredient Declaration

Water, Potato (12%), (#MILK#), Carrot (8%), Swede (8%), Bechamel Whey, (#MILK#), Butter Oil ,Vegetable Oils (Palm, Fully Hydrogenated Coconut), Modified Starch, Salt, Firming Agent (Disodium Phosphate, Tetrasodium Diphosphate, Calcium Sulphate), Gelling Agent (Sodium Alginate), Sugar, Spices (Pepper, Nutmeg), Colour: Beta Carotene), Pasta (5%) (Durum(#WHEAT#), semolina, water, Cheese (#MILK#), (#SOYA#), Rapeseed Oil, Butter Oil (Vegetable Oil [Rape, Palm], Salt, Emulsifier: E322, Flavouring:, Colour: E160a), Modified Starch, Herb And Spice, (#MUSTARD#).

Ingredient Statements

For allergens, including cereals containing gluten, see ingredients in CAPITALS, May also contain, Sesame, nuts, celery, mustard and sulphites.

ALLERGENS

Product Contains:

Celery/Celериac	May Contain	Mustard	Yes
Cereals Containing Gluten	Yes	Nuts (Tree)	May Contain
Barley	No	Almond nuts	May Contain
Oats	No	Brazil nuts	May Contain
Rye	No	Cashew nuts	May Contain
Wheat (including Spelt and Khorasan)	Yes	Hazelnuts	May Contain
Crustacea	No	Macadamia (Queensland) nuts	May Contain
Eggs	No	Pecan nuts	May Contain
Fish	No	Pistachio nuts	May Contain
Lupin	No	Walnuts	May Contain
Milk	Yes	Peanuts	May Contain
Molluscs	No	Sesame Seeds	May Contain
		Soybeans	Yes
		Sulphur Dioxide and Sulphites	No

Risk Source:

Celery/Celериac (Risk Source)	Raw Material	Tree Nuts (Risk Source)	Raw Material
Almond nuts (Risk Source)	Raw Material	Brazil nuts (Risk Source)	Raw Material
Cashew nuts (Risk Source)	Raw Material	Hazelnuts (Risk Source)	Raw Material
Macadamia nuts (Risk Source)	Raw Material	Pecan nuts (Risk Source)	Raw Material
Pistachio nuts (Risk Source)	Raw Material	Walnuts (Risk Source)	Raw Material
Peanuts (Risk Source)	Raw Material	Sesame Seeds (Risk Source)	Raw Material

Additional Allergen Information

For allergens, see ingredients in CAPITALS, May also contain nuts, sesame, soya, celery & mustard

SUPPLEMENTARY INGREDIENT INFORMATION

Palm Oil	Yes
Hydrogenated Vegetable Oil/Fat	No
GM Protein/DNA	No

ADDITIVES

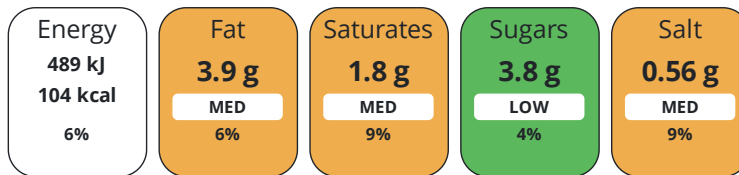
Product Contains:

DIET SUITABILITY

Vegan Diet	No	Vegetarian Diet	Suitable for
-------------------	----	------------------------	--------------

NUTRITIONAL INFORMATION

Each 100g/ml portion contains:



of your reference intake.

Typical values per 100g/ml : Energy 104kcal / 489kj

Nutrient	per 100g	RI per 100g	per 380g of prepared product
Energy (kJ)	489 kJ	6%	1689 kJ
Energy (kcal)	104 kcal	5%	410 kcal
Fat	3.9 g	6%	9.1 g
of which Saturates	1.8 g	9%	9 g
Carbohydrate	11 g	4%	43 g
of which Sugars	3.8 g	4%	15 g
Fibre	0.8 g		2.9 g
Protein	3.6 g	7%	15 g
Salt	0.56 g	9%	2.1 g
Sodium	225 mg		854 mg

Source of Nutritional Information Manufacturers analysis

SUPPLEMENTARY NUTRITIONAL INFORMATION

HANDLING & STORAGE INFORMATION

Directions For Use

HEAT FROM FROZEN, Microwave Heat at 700ww for 8-9 mins. Conventional oven: place in a pre-heated oven at 150.c of 35-40 mins. HEAT MEAL TO CORE OF MINIIMUM 75°C, once heated do not re-heat

Storage Instructions

HEAT FROM FROZEN, Microwave Heat at 700ww for 8-9 mins. Conventional oven: place in a pre-heated oven at 150.c of 35-40 mins. HEAT MEAL TO CORE OF MINIIMUM 75°C, once heated do not re-heat

Shelf Life from Time of Production 450 Days

ORIGIN

Product Country of Origin/Place of Provenance United Kingdom

PRODUCT CHARACTERISTICS

Standards Testing

Do you undertake trend analysis of microbiological results? Yes

Is shelf life testing undertaken? Yes

CONFIGURATION

Case Configuration

Inner Pack Configuration

Total Quantity of Inner Components in Outer Case 12 Units

Quantity of Inner Components in Inner Pack 12

PRODUCT WEIGHTS

Inner Component

Variable Weight Consumer Item No

Inner Component Weight 380 g

Outer Case

Outer Case Gross Weight 5.04 kg

Outer Case Net Weight 4.56 kg

PRODUCT DIMENSIONS

Inner Component		Inner Pack	
Inner Component Depth	193 mm	Inner Pack Depth	193 mm
Inner Component Width	193 mm	Inner Pack Width	193 mm
Inner Component Height	40 mm	Inner Pack Height	40 mm
Outer Case			
Outer Case Depth	385 mm		
Outer Case Width	200 mm		
Outer Case Height	235 mm		

PALLET INFORMATION

Quantity of Cases Per Pallet Layer	7 Cases	Pallet Type	UK Standard Pallet
Quantity of Layers Per Pallet	15 Layers	Pallet Height	1.35 MTR
Quantity of Cases Per Pallet	105 Cases	Pallet Gross Weight	307.23 kg

PACKAGING

Inner Component Packaging						
Type	Materials	Weight	Recycled Plastic %	Recyclable	Returnable	Composite
Poly Treated PET/PE	Plastic	10 g	- %	No		
Outer Case Packaging						
Type	Materials	Weight	Recycled Plastic %	Recyclable	Returnable	Composite
Case	Paper/Cardboard	30 g	- %	Yes		

OTHER INFORMATION

SOFT24 Tuna bake (with diced potato in cheese sauce and carrots)

Manufacturer Component Code SOFT24
 Outer Case GTIN 5060221530156



INGREDIENTS

Ingredient Declaration

Carrot (26%), Water, Tuna (17%) (#FISH#) (Tuna, Water, Salt), Potato (12%), #MILK#, Tomato, Onion, Cream (#MILK), Modified Starch, Bechamel (Whey (#MILK#), Skimmed #MILK#, Vegetable Oils (Palm, Fully Hydrogenated Coconut), Modified Starch, Salt, Firming Agent (Disodium Phosphate, Tetrasodium Diphosphate, Calcium Sulphate), Gelling Agent (Sodium Alginate), Sugar, Spices (Pepper, Nutmeg), Colour: Beta Carotene, Butter Oil (Vegetable Oil [rape, Palm], Salt, Emulsifier: E322, Flavouring: Butter Oil (#MILK#), Colour: E160a), Herb And Spice, Cheese (#MILK), Rapeseed Oil, Salt.

Ingredient Statements

For allergens, including cereals containing gluten, see ingredients in CAPITALS, May also contain, Sesame, nuts, celery, mustard and sulphites.

ALLERGENS

Product Contains:

Celery/Celериac	May Contain	Mustard	May Contain
Cereals Containing Gluten	No	Nuts (Tree)	May Contain
Barley	No	Almond nuts	May Contain
Oats	No	Brazil nuts	May Contain
Rye	No	Cashew nuts	May Contain
Wheat (including Spelt and Khorasan)	No	Hazelnuts	May Contain
Crustacea	No	Macadamia (Queensland) nuts	May Contain
Eggs	No	Pecan nuts	May Contain
Fish	Yes	Pistachio nuts	May Contain
Lupin	No	Walnuts	May Contain
Milk	Yes	Peanuts	May Contain
Molluscs	No	Sesame Seeds	May Contain
		Soybeans	May Contain
		Sulphur Dioxide and Sulphites	No

Risk Source:

Celery/Celериac (Risk Source)	Raw Material	Mustard (Risk Source)	Raw Material
Tree Nuts (Risk Source)	Raw Material	Almond nuts (Risk Source)	Raw Material
Brazil nuts (Risk Source)	Raw Material	Cashew nuts (Risk Source)	Raw Material
Hazelnuts (Risk Source)	Raw Material	Macadamia nuts (Risk Source)	Raw Material
Pecan nuts (Risk Source)	Raw Material	Pistachio nuts (Risk Source)	Raw Material
Walnuts (Risk Source)	Raw Material	Peanuts (Risk Source)	Raw Material
Sesame Seeds (Risk Source)	Raw Material	Soybeans (Risk Source)	Raw Material

Additional Allergen Information

For allergens, see ingredients in CAPITALS, May also contain nuts, sesame, soya, celery & mustard

SUPPLEMENTARY INGREDIENT INFORMATION

Palm Oil	Yes
Hydrogenated Vegetable Oil/Fat	No
GM Protein/DNA	No

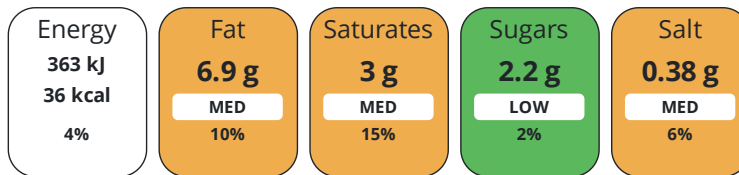
ADDITIVES

Product Contains:

DIET SUITABILITY

Vegan Diet	No	Vegetarian Diet	No
-------------------	----	------------------------	----

Each 100g/ml portion contains:



of your reference intake.

Typical values per 100g/ml : Energy 36kcal / 363kj

Nutrient	per 100g	RI per 100g	per 380g of prepared product
Energy (kJ)	363 kJ	4%	1524 kJ
Energy (kcal)	36 kcal	2%	363 kcal
Fat	6.9 g	10%	16 g
of which Saturates	3 g	15%	2.8 g
Carbohydrate	2.2 g	1%	8.5 g
of which Sugars	2.2 g	2%	6.5 g
Fibre	0.2 g		4.5 g
Protein	5.8 g	12%	20 g
Salt	0.38 g	6%	1.38 g
Sodium	157 mg		554 mg

Source of Nutritional Information Manufacturers analysis

SUPPLEMENTARY
NUTRITIONAL
INFORMATION

HANDLING &
STORAGE
INFORMATION

Directions For Use

HEAT FROM FROZEN, Microwave Heat at 700ww for 8-9 mins. Conventional oven: place in a pre-heated oven at 150.c of 35-40 mins. HEAT MEAL TO CORE OF MINIIMUM 75°C, once heated do not re-heat

Storage Instructions

HEAT FROM FROZEN, Microwave Heat at 700ww for 8-9 mins. Conventional oven: place in a pre-heated oven at 150.c of 35-40 mins. HEAT MEAL TO CORE OF MINIIMUM 75°C, once heated do not re-heat

Shelf Life from Time of Production 450 Days

ORIGIN

Product Country of Origin/Place of United Kingdom

Provenance

PRODUCT
CHARACTERISTICS

Standards Testing

Do you undertake trend analysis of microbiological results? Yes

Is shelf life testing undertaken? Yes

CONFIGURATION

Case Configuration

Inner Pack Configuration

Total Quantity of Inner Components in Outer Case 12 Units

Quantity of Inner Components in Inner Pack 12

PRODUCT
WEIGHTS

Inner Component

Variable Weight Consumer Item No

Inner Component Weight 380 g

Outer Case

Outer Case Gross Weight 5.04 kg

Outer Case Net Weight 4.56 kg

PRODUCT DIMENSIONS

Inner Component		Inner Pack	
Inner Component Depth	193 mm	Inner Pack Depth	193 mm
Inner Component Width	193 mm	Inner Pack Width	193 mm
Inner Component Height	40 mm	Inner Pack Height	40 mm
Outer Case			
Outer Case Depth	385 mm		
Outer Case Width	200 mm		
Outer Case Height	235 mm		

PALLET INFORMATION

Quantity of Cases Per Pallet Layer	7 Cases	Pallet Type	UK Standard Pallet
Quantity of Layers Per Pallet	15 Layers	Pallet Height	1.35 MTR
Quantity of Cases Per Pallet	105 Cases	Pallet Gross Weight	307.23 kg

PACKAGING

Inner Component Packaging							
Type	Materials	Weight	Recycled Plastic %	Recyclable	Returnable	Composite	
Poly Treated PET/PE	Plastic	10 g	- %	No			
Outer Case Packaging							
Type	Materials	Weight	Recycled Plastic %	Recyclable	Returnable	Composite	
Case	Paper/Cardboard	30 g	- %	Yes			

OTHER INFORMATION CONTACT INFORMATION

Address	Technical Contact
Simply Food Solutions	Fiona Gleghorn
Eldon Street	Head of Technical
South Shields	fiona.gleghorn@simplyfoodsolutions.co.uk
Newcastle	
Tyne and Wear	<u>P: (Phone)</u> 07745648777
NE33 5BZ	
United Kingdom	
<u>P: (Phone)</u> 01914560456	
Complaints Contact	
Fiona Gleghorn	
Head of Technical	
fiona.gleghorn@simplyfoodsolutions.co.uk	
<u>P: (Phone)</u> 077745648777	

The information on the [Erudus System](#) has been supplied by the manufacturers of the products and, whilst the owners of the Erudus System take steps to ensure the information is regularly updated, they give no warranty and no guarantee that the information is accurate. Product information and ingredients may change, please always read product labels carefully in addition to using the information provided by Erudus.

We do not accept liability for any inaccuracies or incorrect information contained on this site. Please visit <http://www.erudus.com/terms-and-conditions> for full terms and conditions.