

Changed Apr 18, 2024 07:07

Reviewed Apr 18, 2024 07:07

Erudus ID c487bcd8466949c490ecda2bd51a2939

Version 1.0



Tropicana Sparkling Tropical Twist 12 x 250ml

Sparkling Tropical Twist 12x250ml

PRODUCT DESCRIPTION

Carbonated tropical juice drink in slimline 250ml can. Made with real hand-picked fruit. No added sweeteners.

Brand	Tropicana Juice Ambient
Manufacturer Product Code	340056596
Effective Date	Apr 18, 2024
Product Type	Drink
Product Category	Carbonated & Soft Drinks
Storage Type	Ambient
Erudus ID	c487bcd8466949c490ecda2bd51a2939
Specification Type	Drinks

Inner Component GTIN	1210002011259
Manufacturer Component Code	340056596
Outer Case GTIN	1210002011266



INGREDIENTS

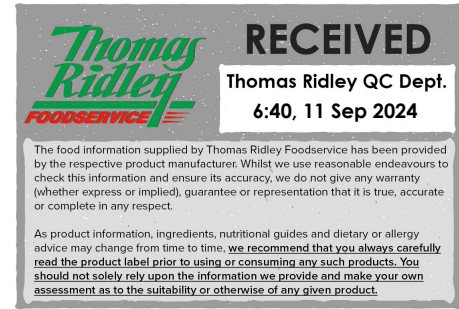
Ingredient Declaration

Carbonated Water, Juice From Concentrate (30%) (Orange Juice, (15%), Apple (10%), Pineapple (5%)), Fructose, Mango and Passionfruit Extract (0.02%), Natural Flavouring, Caramelised Apple Extract, Safflower Extract, Acidity Regulators: Citric Acid, Sodium Citrates, Antioxidant: Ascorbic Acid, Stabiliser: Pectin.

ALLERGENS

Product Contains:

Celery/Celериac	No	Mustard	No
Cereals Containing Gluten	No	Nuts (Tree)	No
Barley	No	Almond nuts	No
Oats	No	Brazil nuts	No
Rye	No	Cashew nuts	No
Wheat (including Spelt and Khorasan)	No	Hazelnuts	No
Crustacea	No	Macadamia (Queensland) nuts	No
Eggs	No	Pecan nuts	No
Fish	No	Pistachio nuts	No
Lupin	No	Walnuts	No
Milk	No	Peanuts	No
Molluscs	No	Sesame Seeds	No
		Soybeans	No
		Sulphur Dioxide and Sulphites	No



SUPPLEMENTARY
INGREDIENT
INFORMATION

Palm Oil	No
Hydrogenated Vegetable Oil/Fat	No
GM Protein/DNA	No

ADDITIVES

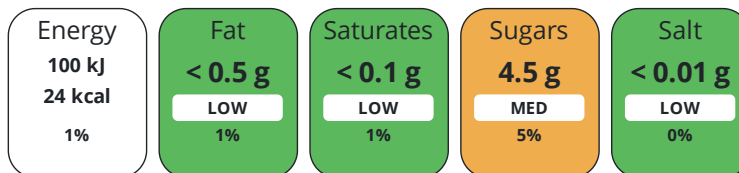
Product Contains:

DIET
SUITABILITY

Vegan Diet Suitable for **Vegetarian Diet** Suitable for

NUTRITIONAL
INFORMATION

Each 100g/ml portion contains:



of your reference intake.

Typical values per 100g/ml : Energy 24kcal / 100kj

Nutrient	per 100ml	RI per 100ml	per 250ml serving	RI per 250ml serving
Energy (kJ)	100 kJ	1%	250 kJ	3%
Energy (kcal)	24 kcal	1%	60 kcal	3%
Fat	< 0.5 g	1%	1.3 g	2%
of which Saturates	< 0.1 g	1%	0.3 g	2%
of which Mono-unsaturates	< 0.1 g		0.3 g	
of which Polyunsaturates	< 0.1 g		0.3 g	
Carbohydrate	4.5 g	2%	11.3 g	4%
of which Sugars	4.5 g	5%	11.3 g	13%
Fibre	< 0.5 g		1.3 g	
Protein	< 0.5 g	1%	1.3 g	3%
Salt	< 0.01 g	0%	-	
Sodium	< 0.01 mg		-	

Serving Size	250 ml
Serving Size Description	250ml slimline can
Number of Servings	1 Servings

SUPPLEMENTARY
NUTRITIONAL
INFORMATION

HFSS (HIGH IN
FAT, SALT AND
SUGAR)
HANDLING &
STORAGE
INFORMATION

HFSS Status Not Applicable (out of scope, exempt)

Directions For Use

Best served chilled. Enjoy Tropicana as part of a varied and balanced diet and healthy lifestyle.

Storage Instructions

Store in a cool, dry place. Ambient stable.

Storage Instructions After Opening

This pack contains 1 serving. Consume once opened.

Shelf Life from Time of Production	274 Days
Shelf Life From Opening	0 Days

ORIGIN	Product Country of Origin/Place of Provenance	United Kingdom		
PRODUCT CHARACTERISTICS	Standards Testing		Is shelf life testing undertaken?	Yes
	CONFIGURATION	Case Configuration	Inner Pack Configuration	
	Variable Inner Components in Outer Case	No	Count per Inner Component	1
	Total Quantity of Inner Components in Outer Case	12 Units		
	Is the Outer Case Splittable?	No		
PRODUCT WEIGHTS	Inner Component			
	Inner Component Volume	250 ml		
	e mark	Yes		
	Outer Case			
	Outer Case Gross Weight	3.35 kg		
	Outer Case Net Weight	3.06 kg		
PRODUCT DIMENSIONS	Inner Component			
	Inner Component Depth	53.3 mm		
	Inner Component Width	53.3 mm		
	Inner Component Height	134 mm		
	Inner Component Diameter	53 mm		
	Outer Case			
	Outer Case Depth	217 mm		
	Outer Case Width	163 mm		
	Outer Case Height	137 mm		
	PALLET INFORMATION	Quantity of Cases Per Pallet Layer	32 Cases	Pallet Height
Quantity of Layers Per Pallet		10 Layers	Pallet Gross Weight	1102 kg
Quantity of Cases Per Pallet		320 Cases		
MARKETING INFORMATION	Marketing Description	Transport your tastebuds to the sun-drenched Tropics, with the UK's favourite juice brand. Made from hand-picked Costa Rican Pineapples and a mouth-watering mix of tropical fruits, Tropicana's signature taste is now infused with a gentle fizz for a refreshing fruit experience to enjoy throughout the day.		
OTHER INFORMATION	Commodity Code	2202991911	Value Added Tax Rate	20%
	Manufacturer Comments	Ireland DRS Logo on pack		

CONTACT
INFORMATION

Address

Tropicana Products UK Ltd
Refresco Bondgate
Bondgate
Knottingley Road
Pontefract
West Yorkshire
WF8 2LH

Technical Contact

Sophia Naimi
Global FSQ Manager - Europe
sophia.naimi@tropicana.com

Complaints Contact

Sophia Naimi
Global FSQ Manager - Europe
sophia.naimi@tropicana.com

Commercial Contact

Sam Barton
National Account Executive
sam.barton@tropicana.com

P: (Phone) 07721 741670

The information on the [Erudus System](#) has been supplied by the manufacturers of the products and, whilst the owners of the Erudus System take steps to ensure the information is regularly updated, they give no warranty and no guarantee that the information is accurate. Product information and ingredients may change, please always read product labels carefully in addition to using the information provided by Erudus.

We do not accept liability for any inaccuracies or incorrect information contained on this site.
Please visit <http://www.erudus.com/terms-and-conditions> for full terms and conditions.