

The food information supplied by Thomas Ridley Foodservice has been provided by the respective product manufacturer. Whilst we use reasonable endeavours to check this information and ensure its accuracy, we do not give any warranty (whether express or implied), guarantee or representation that it is true, accurate or complete in any respect.

As product information, ingredients, nutritional guides and dietary or allergy advice may change from time to time, we recommend that you always carefully read the product label prior to using or consuming any such products. You should not solely rely upon the information we provide and make your own assessment as to the suitability or otherwise of any given product.

# BERRY GO ROUND

## 5222

### PRODUCT INFORMATION

<b>Mix Contains</b>	IQF Blackberry, IQF Raspberry, IQF Strawberry
<b>Country of Manufacture</b>	UK / Poland
<b>Unit Size</b>	30 x 140g
<b>Pallet Size</b>	140 cases

### INGREDIENTS DECLARATION *(Including Additives)*

Strawberry, Blackberry, Raspberry

10% Tolerance per mix ingredients

### NUTRITIONAL INFORMATION PER 100G

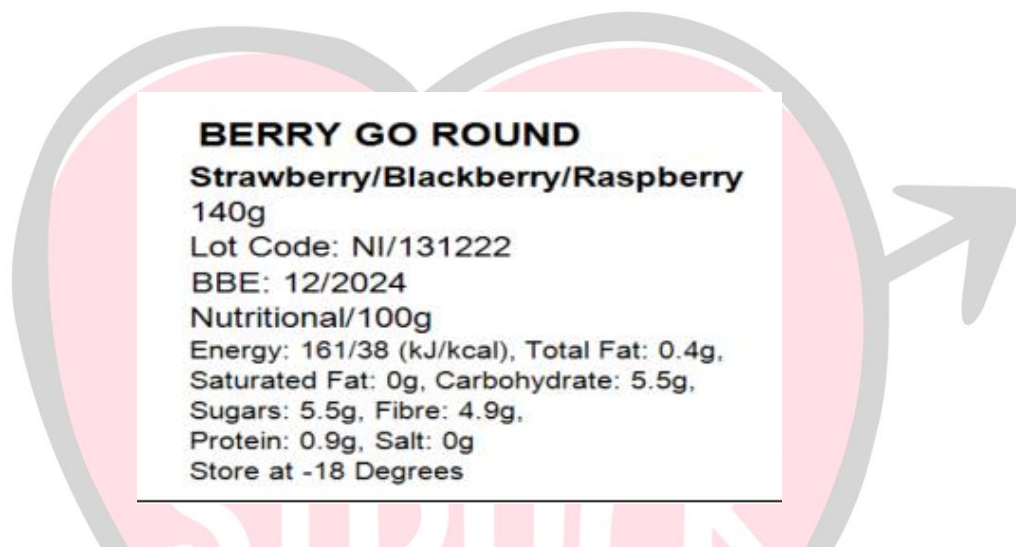
*(source; Nutri Calc)*

	Per 100g as sold	Per 140g as sold
<b>Energy (kJ)</b>	161	225
<b>Energy (kcal)</b>	38	54
<b>Total Fat (g)</b>	0.4	0.5
<b>Of which Saturates (g)</b>	0.0	0.1
<b>Carbohydrate (g)</b>	5.5	7.7
<b>Of which Sugars (g)</b>	5.5	7.7
<b>Fibre (g)</b>	4.9	6.8
<b>Protein (g)</b>	0.9	1.2
<b>Salt (g)</b>	0.00	0.01

## NUTRITION CLAIMS

- High Source of Vitamin C 50% RDA (40mg)
- High Source of Manganese 32% RDA (0.6mg)
- Source of Folate 24% RDA (47µg)
- Salt Free
- Fat free

## LABEL



### BERRY GO ROUND

Strawberry/Blackberry/Raspberry

140g

Lot Code: NI/131222

BBE: 12/2024

Nutritional/100g



Energy: 161/38 (kJ/kcal), Total Fat: 0.4g,

Saturated Fat: 0g, Carbohydrate: 5.5g,

Sugars: 5.5g, Fibre: 4.9g,

Protein: 0.9g, Salt: 0g

Store at -18 Degrees

	<h2>BERRY GO ROUND</h2>	Product Code: <b>5222</b>
	Ingredients: Strawberry/Blackberry/Raspberry	Packed for Love Struck (F&B) Ltd 28 Frederick Sanger Rd, Guildford GU2 7YD  Email: <a href="mailto:office@love-struck.com">office@love-struck.com</a> Web: <a href="http://www.love-struck.com">www.love-struck.com</a> T: 0207 378 8332
Pack Size: 30 x 140g Lot Code: NI/131222 BBE: 12/2024 Production Date: 13/12/2022 Frozen Product / Store at -18 Degrees / Do not refreeze		

## MICROBIOLOGICAL STANDARDS

	Accept	Reject
TVC (cfu / g)	<100,000	>1,000,000
Yeasts & Moulds (cfu / g)	<1,000	>100,000
Coliforms (cfu / g)	<1,000	>10,000
E.coli (cfu / g)	<10	>100
Listeria Monocytogenes	Absent in 25g	>100 cfu/g

**ALLERGEN DECLARATION****No = Free****Yes = Present**

<b>Allergen</b>	<b>Present</b>	<b>On Site</b>	<b>Comments</b>
<b>Cereals containing gluten (e.g. wheat, barley, rye, oat, spelt etc.) and product thereof</b>	No	Yes	*Other mixes
<b>Crustaceans (e.g. prawns, crabs, lobster, crayfish) and product thereof</b>	No	No	
<b>Egg and product thereof</b>	No	No	
<b>Fish and product thereof</b>	No	No	
<b>Peanuts and product thereof</b>	No	No	
<b>Nuts (e.g. almonds, hazelnuts, walnuts, cashews, pecan nuts, brazil nuts, pistachio nuts, macadamia nuts) and product thereof</b>	No	No	
<b>Milk and product thereof</b>	No	Yes	*Other mixes
<b>Soybeans and product thereof</b>	No	Yes	*Other mixes
<b>Celery and product thereof</b>	No	Yes	*Other mixes
<b>Sulphites and Sulphur Dioxide (&gt;10 mg/kg or &gt;10 mg/litre)</b>	No	No	
<b>Molluscs (mussels, whelks, oysters, snails, squid) and product thereof</b>	No	No	
<b>Lupin and product thereof</b>	No	No	
<b>Mustard and product thereof</b>	No	Yes	
<b>Sesame seeds and product thereof</b>	No	No	

\*Allergen production is strictly controlled, product with allergens is manufactured in different time from rest of the production, usually on Saturdays. There are tools, clothing segregation and all people involved are fully trained. With all these controls in place there is no risk of cross contamination

**SUITABILITY****Yes/No**

Is the product suitable for Vegetarians?	Yes
Is the product suitable for Vegans?	Yes

**GMO DECLARATION****Yes / No**

Does the product or any of its ingredients contain any genetically modified material (whether active or not)?	No
Is the product or any of its ingredients significantly changed as a consequence of use of genetic modification?	No
Is the product or any of its ingredients produced from, but not containing, any genetically modified material?	No
Have genetically modified organisms been used as processing aids or additives (where such genetically modified organisms are not present in the processing aid) in connection with the production of food or any of its ingredients?	No

**PACKAGING AND STORAGE INFORMATION**

<b>Shelf Life</b>	24 months from production date
<b>Storage</b>	(Frozen) -18°C to -24°C
<b>Label Details</b>	Name, Ingredients, Allergens, Batch Code, Unit Weight, BBD, Bar Code, Lot Code, Instructions, Storage Details or as per customer request.
<b>Sachet Material</b>	50µg low density polyethylene (LDPE).

**I confirm that the product will be manufactured to this specification and that this product will fully comply with all relevant EC/UK Food and Environment Protection Legislation currently in force.**

<b>Name</b>	Zoe Arrowsmith
<b>Position</b>	Operations Manager
<b>Date</b>	14/02/24