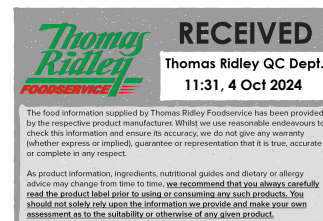


# KILLER TOMATO

## 6810



## PRODUCT INFORMATION

|                               |   |
|-------------------------------|---|
| <b>Mix Contains</b>           | IQF Tomato, IQF Red Grapes, IQF Semi Dried Tomatoes, IQF Roasted Red Pepper, IQF Potato, IQF Cream Pellets, IQF Garlic & Salt Pellets, IQF Basil            |
| <b>Country of Manufacture</b> | UK / Poland   |
| <b>Unit Size</b>              | 20 X 215g   |
| <b>Pallet Size</b>            | 140 cases   |
| <b>Outer GTIN</b>             | 5060280584718   |
| <b>Erudus ID</b>              | 7a9ff69a081f4cb893efab886b06c084  |
| <b>Sync Link</b>              | <a href="https://ln5.sync.com/dl/86f9c92c0/2dqppme9-bkvgvy6su-8u85gxrz-gnnar49c">https://ln5.sync.com/dl/86f9c92c0/2dqppme9-bkvgvy6su-8u85gxrz-gnnar49c</a> |

## INGREDIENTS DECLARATION *(Including Additives)*

Tomatoes, Red Grapes, Semi Dried Tomatoes, Roasted Red Pepper, Potatoes, Cream Pellets (Cream (**Milk**), Stabilizer: Carrageenan), Garlic & Salt Pellets (Coconut Oil, Garlic, Salt), Basil

For allergens, see ingredients in **bold**.

10% Tolerance per mix ingredients

## NUTRITIONAL INFORMATION PER 100G

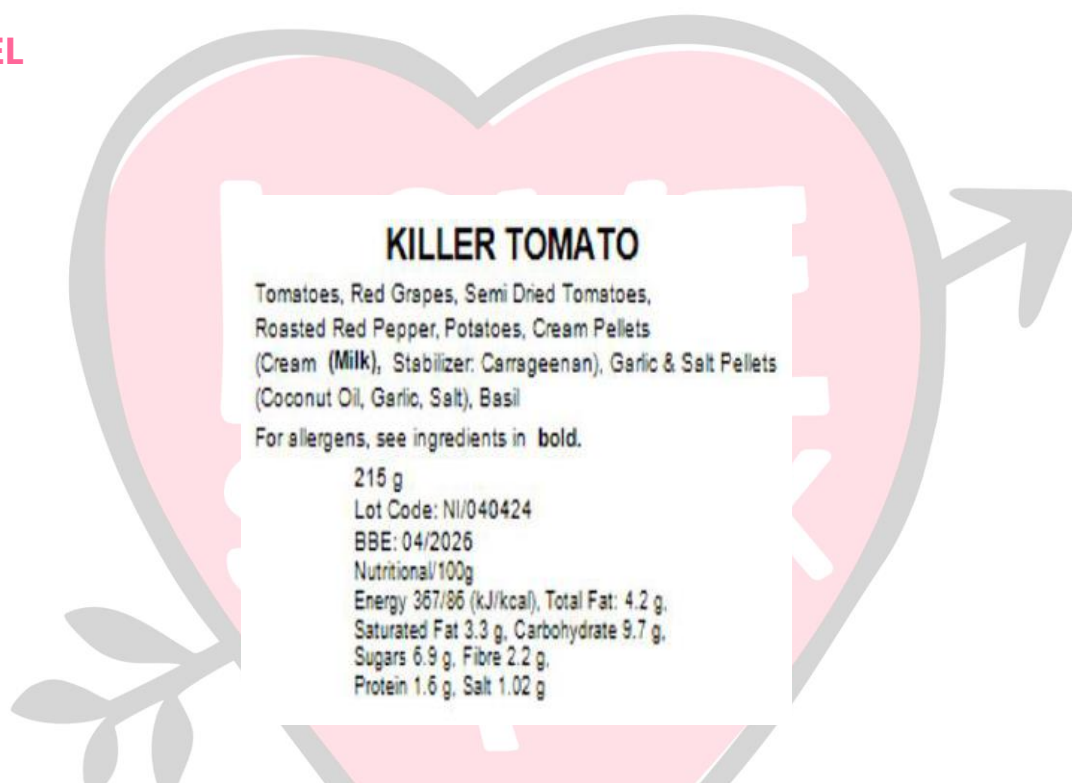
*(source; Nutri Calc)*



|                               | Per 100g as sold | Per 215g as sold |
|-------------------------------|------------------|------------------|
| <b>Energy (kJ)</b>            | 367              | 790              |
| <b>Energy (kcal)</b>          | 86               | 185              |
| <b>Total Fat (g)</b>          | 4.2              | 9.1              |
| <b>Of which Saturates (g)</b> | 3.3              | 7.1              |
| <b>Carbohydrate (g)</b>       | 9.7              | 20.9             |
| <b>Of which Sugars (g)</b>    | 6.9              | 14.7             |
| <b>Fibre (g)</b>              | 2.2              | 4.7              |
| <b>Protein (g)</b>            | 1.6              | 3.4              |
| <b>Salt (g)</b>               | 1.02             | 2.19             |

## NUTRITION CLAIMS

| Per 100g as sold                   | Per 215g as sold                       |
|------------------------------------|--|
| Source of Fibre                    | High in Vitamin A - 803µg (100% RDA)   |
| High in Vitamin C – 27mg (34% RDA) | Source of Vitamin C – 0.25mg (23% RDA) |
|                                    | Source of Folate - 43µg (21% RDA)      |
|                                    | Source of Potassium – 422mg (21% RDA)  |

## LABEL



|  |  |   |
|--|--|---|
|   | <h2>KILLER TOMATO</h2>   | <b>Product Code: 6810</b>   |
|  | Ingredients: Tomatoes, Red Grapes, Semi Dried Tomatoes, Roasted Red Pepper, Potatoes, Cream Pellets (Cream ( <b>Milk</b> ), Stabilizer: Carrageenan), Garlic & Salt Pellets (Coconut Oil, Garlic, Salt), Basil | <b>Packed for</b><br><b>Love Struck (F&amp;B) Ltd</b><br>28 Frederick Sanger Rd,<br>Guildford GU2 7YD |
| <b>Pack Size: 20 x 215 g</b><br>Lot Code: NI/040424<br><b>BBE: 04/2026</b><br><b>Production Date: 04/04/2024</b><br><b>Frozen Product / Store at -18 Degrees / Do not refreeze</b> | For allergens, see ingredients in <b>bold</b> .<br>  | <b>Email: office@love-struck.com</b><br><b>Web: www.love-struck.com</b><br><b>T: 0207 378 8332</b>    |

## MICROBIOLOGICAL STANDARDS

|                           | Accept        | Reject     |
|---------------------------|---------------|------------|
| TVC (cfu / g)             | <100,000      | >1,000,000 |
| Yeasts & Moulds (cfu / g) | <1,000        | >100,000   |
| Coliforms (cfu / g)       | <1,000        | >10,000    |
| E.coli (cfu / g)          | <10           | >100       |
| Listeria Monocytogenes    | Absent in 25g | >100 cfu/g |

## ALLERGEN DECLARATION

No = Free

Yes = Present

| Allergen  | Present | On Site | Comments     |
|---|---------|---------|--------------|
| Cereals containing gluten (e.g. wheat, barley, rye, oat, spelt etc.) and product thereof                                      | No      | Yes     | *Other mixes |
| Crustaceans (e.g. prawns, crabs, lobster, crayfish) and product thereof   | No      | No      |              |
| Egg and product thereof   | No      | No      |              |
| Fish and product thereof  | No      | No      |              |
| Peanuts and product thereof   | No      | No      |              |
| Nuts (e.g. almonds, hazelnuts, walnuts, cashews, pecan nuts, brazil nuts, pistachio nuts, macadamia nuts) and product thereof | No      | No      |              |
| Milk and product thereof  | Yes     | Yes     | Contains     |
| Soybeans and product thereof  | No      | Yes     | *Other mixes |
| Celery and product thereof  | No      | Yes     | *Other mixes |
| Sulphites and Sulphur Dioxide (> 10 mg/kg or >10 mg/litre)  | No      | No      |              |
| Molluscs (mussels, whelks, oysters, snails, squid) and product thereof  | No      | No      |              |
| Lupin and product thereof   | No      | No      |              |
| Mustard and product thereof   | No      | Yes     |              |
| Sesame seeds and product thereof  | No      | No      |              |

\*Allergen production is strictly controlled, product with allergens is manufactured in different time from rest of the production, usually on Saturdays. There are tools, clothing segregation and all people involved are fully trained. With all these controls in place there is no risk of cross contamination

**SUITABILITY****Yes/No**

|  |     |
|--|-----|
| Is the product suitable for Vegetarians? | Yes |
| Is the product suitable for Vegans?      | No  |

**GMO DECLARATION****Yes / No**

|  |    |
|--|----|
| Does the product or any of its ingredients contain any genetically modified material (whether active or not)?  | No |
| Is the product or any of its ingredients significantly changed as a consequence of use of genetic modification?  | No |
| Is the product or any of its ingredients produced from, but not containing, any genetically modified material?   | No |
| Have genetically modified organisms been used as processing aids or additives (where such genetically modified organisms are not present in the processing aid) in connection with the production of food or any of its ingredients? | No |

**PACKAGING AND STORAGE INFORMATION**

|                        |   |
|------------------------|---|
| <b>Shelf Life</b>      | 24 months from production date  |
| <b>Storage</b>         | (Frozen) -18°C to -24°C   |
| <b>Label Details</b>   | Name, Ingredients, Allergens, Batch Code, Unit Weight, BBD, Bar Code, Lot Code, Instructions, Storage Details or as per customer request. |
| <b>Sachet Material</b> | 50µg low density polyethylene (LDPE).   |

**I confirm that the product will be manufactured to this specification and that this product will fully comply with all relevant EC/UK Food and Environment Protection Legislation currently in force.**

|                      |                    |
|----------------------|--------------------|
| <b>Name</b>          | Zoe Arrowsmith     |
| <b>Position</b>      | Operations Manager |
| <b>Date Created</b>  | 14/02/24           |
| <b>Last Modified</b> | 03/10/24 DN        |