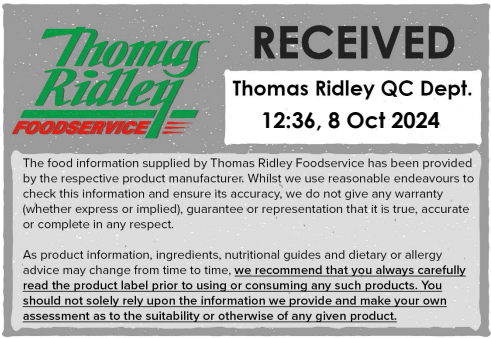


Belvita Soft Bakes Choc Chips 50g



EAN
7622202233166

Target market(s)
GB, IE

Components

Ingredients

Cereals 46.3 % [**WHEAT** Flour 26.9 %, Wholegrain Cereals 17.6 % (Buckwheat Grits 6.9 %, **OAT** Grits 6.9 %, Wholegrain **BARLEY** Flour 1 %, Wholegrain Spelt Flour (**WHEAT**) 1 %, **OAT** Flakes 1 %, Wholegrain **WHEAT** Flour 0.8 %), Rice Flour 1.7 %, Malted **WHEAT** Flour 0.1 %]

Rapeseed Oil

Chocolate Drops 9% [Sugar, Cocoa Mass, Emulsifier (**SOYA** Lecithins)]

Sugar

Modified Starch

Humectant (Glycerol)

Chicory Root Fibre

Isomaltulose***

Bulking Agent (Maltitols)

Minerals (Calcium Carbonate, Magnesium Carbonate, Elemental Iron)

Emulsifiers (**SOYA** Lecithins, E472b, E475)

Raising Agents (Potassium Carbonates, Sodium Carbonates)

Glucose Syrup

Flavourings

Salt

Skimmed **MILK** Powder

WHEAT Gluten

Dextrose

Starch

***Isomaltulose is a source of Glucose and Fructose

Nutrient Profile Score

Nutrient Profile Score UK - 2

Nutrition

	100 g	%** / 100 g	50 g	%** / 50 g
Energy	1674 kJ		837 kJ	
Energy	399 kcal		200 kcal	10 %
Fat	14 g		7.0 g	10 %
of which saturates	2.9 g		1.4 g	7 %
Carbohydrate	61 g		31 g	12 %

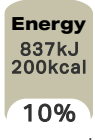
of which sugars	18 g	9.2 g	10 %
of which starch	35 g	18 g	-
Fibre	6.9 g	3.4 g	-
Protein	6.1 g	3.0 g	6 %
Salt	0.44 g	0.22 g	4 %
			% / 50 g
Calcium	260 mg	32 % of NRV**	130 mg 16 % of NRV**
Magnesium	138 mg	37 % of NRV**	69.2 mg 18 % of NRV**
Iron	4.8 mg	35 % of NRV**	2.4 mg 14 % of NRV**
** Nutrient Reference Value(s)			
Contains 8.8 grams wholegrain cereals per serving (50 g)			
The pack contains 1 Soft Bake (50 g)			

Calculated Nutrition

	per 100g	50 g
Energy (kJ)	1674	837
Energy (kcal)	399	200
Fat (g)	14	7
of which saturates (g)	2.9	1.4
Carbohydrate (g)	61	31
of which sugars (g)	18	9.2
of which starch (g)	35	18
Fibre (g)	6.9	3.4
Protein (g)	6.1	3
Salt (g)	0.44	0.22
Calcium (mg)	260	130
Iron (mg)	4.8	2.4
Magnesium (mg)	138	69.2

Front of Pack Nutrition

Per Portion
1x



Per 100g/ml
100 g



Reference intake of an average adult (8400 kJ / 2000 kcal)

Nutrition Other Text

Nutrient Reference Value(s)
Contains 8.8 grams wholegrain cereals per serving (50 g)
The pack contains 1 Soft Bake (50 g)

Reference Intake Statement

Reference Intake Statement - Reference intake of an average adult (8400 kJ / 2000 kcal)

HFSS Indicator

HFSS Indicator - Not HFSS

HFSS Food or Drink

HFSS Food or Drink - Food

HFSS Food Category

HFSS Food Category - 7 - Sweet biscuits and bars

Product Description

Brand

Belvita

Features

Wholegrains & High Fibre
Source of Calcium, Magnesium and Iron
No Colours, No Preservatives
Suitable for Vegetarians

Standardised Brand

Brand - Belvita

Regulated Product Name

Soft baked biscuits made with wholegrain cereals, chocolate chips and added minerals.

Marketing

Company Name

Mondelez UK / Mondelez Ireland

Company Address

Freepost MDLZ,
Mondelez UK,
Uxbridge,
UB8 1DH.

Mondelez Ireland,
Malahide Road,
Coolock,
Dublin 5.

Product Marketing

Keep You Going (!)

(!) Magnesium contributes to normal energy-yielding metabolism.

The beneficial effect is obtained by consuming 1 biscuit. A 50 g serving contains 15% of the nutrient reference value of calcium, magnesium and iron.

Further Description

Enjoy as part of a varied and balanced diet and healthy lifestyle.

Charter Harmony
www.harmony.info

Snack mindfully ww.snackmindful.com

Nutritional Claims

High Fibre
Source of Calcium, Magnesium and Iron

Health Claims

Magnesium contributes to normal energy-yielding metabolism

Health & Lifestyle

Lifestyle

- Suitable for Vegetarians

Allergy Advice

Barley - Contains
Milk - Contains
Oats - Contains
Soya - Contains
Wheat - Contains

Additives

Colours - Free From
Preservatives - Free From

Storage & Usage

Storage Type

Type
Ambient

Storage

Store in a dry place.
Protect from heat.

Date Marking Type

- Best Before

Brandbank Captured Pack Data

Pack Size

0.11lbs e

Numeric Size

Numeric Size - 0.11

Pack Type

Type - Wrap

Recycling Scheme

- OPRL

Recycling Other Text

Recycle at Large Supermarket - Don't recycle at home

Usage Count

Number of uses - Servings

1

Usage Other Text

The pack contains 1 soft bake (50 g)

Customer Services

Manufacturers Address

Freepost MDLZ,
Mondelez UK,
Uxbridge,
UB8 1DH.

Mondelez Ireland,
Malahide Road,
Coolock,
Dublin 5.

Return To

Find more information on www.belvitasnacks.com
We would like to hear from you. Contact us on 0800 3134 540 (UK only) 1800 600 858 (ROI)
Freepost MDLZ,
Mondelez UK,
Consumer Response,
Uxbridge,
UB8 1DH.

Mondelez Ireland,
Malahide Road,
Coolock,
Dublin 5.

Telephone Helpline

0800 3134 540 (UK only)
1800 600 858 (ROI)

Web Address

www.belvitasnacks.com

Extended Data

Description Breakdown

Variant - Choc Chips