

# MATTHEW WALKER GLUTEN FREE CHRISTMAS PUDDING 24X100G

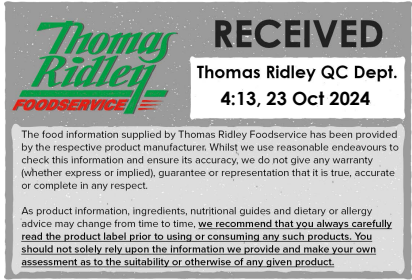
Gluten Free Christmas Pudding 24x100g

PRODUCT DESCRIPTION

A moist, bread like texture with succulent vine fruits. Vine fruits are juicy and may burst very slightly in the mouth when bitten. Please note this product is not suitable for VEGANS due to fresh peel re contains Shellac

|                           |                                  |
|---------------------------|----------------------------------|
| Brand                     | MATTHEW WALKER                   |
| Manufacturer Product Code | 956458 / 952390                  |
| Product Type              | Food                             |
| Product Category          | Desserts                         |
| Storage Type              | Ambient                          |
| Erudus ID                 | 1fdbb2b9237d4c2ea6a9d62b2fdce6a2 |
| Specification Type        | Generic                          |

Outer Case GTIN15056519400215



INGREDIENTS

**Ingredient Declaration**  
Sultanas (29%). Sugar, Cider (11%). Gluten Free Breadcrumbs (Rice Flour, Gram Flour, Maize Starch, Salt, Dextrose). Water, Gluten Free Flour (Rice Flour, Potato Starch Flour, Maize Flour). Humectant (Glycerine). Vegetable Suet (Palm Oil, Rice Flour, Rapeseed Oil). Fresh Mixed Peel (Orange Peel, Lemon Peel). Rum (1%). Mixed Spice, Molasses, Salt.

ALLERGENS

|                                      |    |                               |             |
|--------------------------------------|----|-------------------------------|-------------|
| Product Contains:                    |    |                               |             |
| Celery/Celeriac                      | No | Mustard                       | No          |
| Cereals Containing Gluten            | No | Nuts (Tree)                   | May Contain |
| Barley                               | No | Almond nuts                   | May Contain |
| Oats                                 | No | Brazil nuts                   | May Contain |
| Rye                                  | No | Cashew nuts                   | May Contain |
| Wheat (including Spelt and Khorasan) | No | Hazelnuts                     | May Contain |
| Crustacea                            | No | Macadamia (Queensland) nuts   | May Contain |
| Eggs                                 | No | Pecan nuts                    | May Contain |
| Fish                                 | No | Pistachio nuts                | May Contain |
| Lupin                                | No | Walnuts                       | May Contain |
| Milk                                 | No | Peanuts                       | No          |
| Molluscs                             | No | Sesame Seeds                  | No          |
|                                      |    | Soybeans                      | No          |
|                                      |    | Sulphur Dioxide and Sulphites | No          |

Risk Source:

Additional Allergen Information

For allergens, including cereals containing gluten, see ingredients in bold. May contain traces of other nuts.

FREE FROM CLAIMS

|             |     |
|-------------|-----|
| Gluten-Free | Yes |
|-------------|-----|

SUPPLEMENTARY  
INGREDIENT  
INFORMATION

|                                |     |
|--------------------------------|-----|
| Palm Oil                       | Yes |
| Hydrogenated Vegetable Oil/Fat | No  |
| GM Protein/DNA                 | No  |

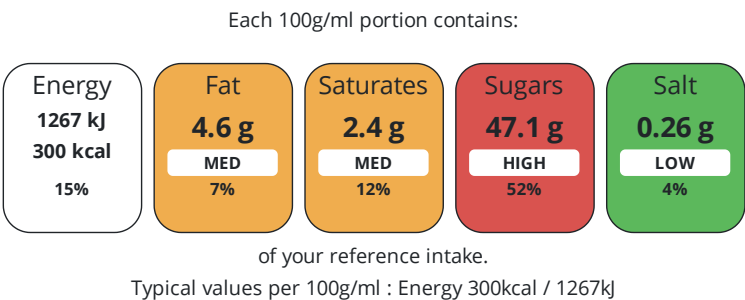
ADDITIVES

|                              |    |                          |    |
|------------------------------|----|--------------------------|----|
| Product Contains:            |    |                          |    |
| Artificial Antioxidants      | No | Artificial Flavourings   | No |
| Artificial Colours           | No | Artificial Preservatives | No |
| Artificial Flavour Enhancers | No | Artificial Sweeteners    | No |

DIET  
SUITABILITY

|            |    |                 |              |
|------------|----|-----------------|--------------|
| Vegan Diet | No | Vegetarian Diet | Suitable for |
| Halal Diet | No | Kosher Diet     | No           |

NUTRITIONAL  
INFORMATION



| Nutrient           | per 100g | RI per 100g | per 100g serving | RI per 100g serving |
|--------------------|----------|-------------|------------------|---------------------|
| Energy (kJ)        | 1267 kJ  | 15%         | 1267 kJ          | 15%                 |
| Energy (kcal)      | 300 kcal | 15%         | 300 kcal         | 15%                 |
| Fat                | 4.6 g    | 7%          | 4.6 g            | 7%                  |
| of which Saturates | 2.4 g    | 12%         | 2.4 g            | 12%                 |
| Carbohydrate       | 62.6 g   | 24%         | 62.6 g           | 24%                 |
| of which Sugars    | 47.1 g   | 52%         | 47.1 g           | 52%                 |
| Fibre              | 1.6 g    |             | 1.6 g            |                     |
| Protein            | 2.3 g    | 5%          | 2.3 g            | 5%                  |
| Salt               | 0.26 g   | 4%          | 0.3 g            | 5%                  |

|              |       |
|--------------|-------|
| Serving Size | 100 g |
|--------------|-------|

SUPPLEMENTARY  
NUTRITIONAL  
INFORMATION

HFSS (HIGH IN  
FAT, SALT AND  
SUGAR)  
HANDLING &  
STORAGE  
INFORMATION

|             |     |
|-------------|-----|
| HFSS Status | Yes |
|-------------|-----|

**Directions For Use**

IF FROZEN STORE AT -18°C. Remove pudding from the box. Defrost in 1.3w microwave for 45 seconds. Adjust time according to microwave wattage. Or defrost at room temperature for approximately 1.5 hours. REHEATING INSTRUCTIONS. Remove outer case. TO STEAM: Leave in basin with film lid on. Place the basin in a steamer over boiling water and steam for 30 mins. Ensure that the water does not enter the pudding. Do not allow the steamer to boil dry. TO MICROWAVE: This is a guideline only. We suggest you consult your instruction manual. Pierce film lid and place in microwave on a microwavable plate (1.3kw): 1 pudding heat on full power for 30 seconds. 3 puddings heat on full power for 60 seconds. 6 puddings heat on full power for 1.5 mins. Stand for 1 minute.

**Storage Instructions**

Ambient (Cool/Dry) Store in a cool dry place. For best before end: see case label.

**Shelf Life from Time of Production** 730 Days

|  |   |                                    |               |   |                                   |                     |           |          |  |
|--|---|------------------------------------|---------------|---|-----------------------------------|---------------------|-----------|----------|--|
| ACCREDITATIONS/<br>CERTIFICATIONS/<br>ASSURANCE<br>SCHEMES<br>ORIGIN | BRCGS Certified   |                                    |               | Roundtable of Sustainable Palm Oil (RSPO) |                                   |                     |           |          |  |
|  | Other Accreditation   |                                    |               |   |                                   |                     |           |          |  |
|  | Product Country of Origin/Place of Provenance               |                                    | Great Britain |   |                                   |                     |           |          |  |
|  |   |                                    |               |   |                                   |                     |           |          |  |
| PRODUCT<br>CHARACTERISTICS   | Standards Testing   |                                    |               |   |                                   |                     |           |          |  |
|  | Do you undertake trend analysis of microbiological results? |                                    | No            |   | Is shelf life testing undertaken? |                     | No        |          |  |
| CONFIGURATION  | Case Configuration  |                                    |               | Inner Pack Configuration                  |                                   |                     |           |          |  |
|  | Total Quantity of Inner Components in Outer Case            |                                    | 24 Units      |   |                                   |                     |           |          |  |
|  | Is the Outer Case Splittable?                               |                                    | No            |   |                                   |                     |           |          |  |
| PRODUCT<br>WEIGHTS   | Inner Component   |                                    |               |   |                                   |                     |           |          |  |
|  | Variable Weight Consumer Item                               |                                    | No            |   |                                   |                     |           |          |  |
|  | Inner Component Weight                                      |                                    | 100 g         |   |                                   |                     |           |          |  |
|  | Outer Case  |                                    |               |   |                                   |                     |           |          |  |
|  | Outer Case Gross Weight                                     |                                    | 2.9 kg        |   |                                   |                     |           |          |  |
|  | Outer Case Net Weight                                       |                                    | 2.4 kg        |   |                                   |                     |           |          |  |
| PRODUCT<br>DIMENSIONS  | Inner Component   |                                    |               |   |                                   |                     |           |          |  |
|  | Inner Component Depth                                       |                                    | 90 mm         |   |                                   |                     |           |          |  |
|  | Inner Component Width                                       |                                    | 90 mm         |   |                                   |                     |           |          |  |
|  | Inner Component Height                                      |                                    | 430 mm        |   |                                   |                     |           |          |  |
|  | Outer Case  |                                    |               |   |                                   |                     |           |          |  |
|  | Outer Case Depth  |                                    | 360 mm        |   |                                   |                     |           |          |  |
|  | Outer Case Width  |                                    | 180 mm        |   |                                   |                     |           |          |  |
|  | Outer Case Height   |                                    | 142 mm        |   |                                   |                     |           |          |  |
|  | PALLET<br>INFORMATION                                       | Quantity of Cases Per Pallet Layer |               | 15 Cases                                  |                                   | Pallet Height       |           | 1.58 MTR |  |
|  |   | Quantity of Layers Per Pallet      |               | 10 Layers                                 |                                   | Pallet Gross Weight |           | 470 kg   |  |
| Quantity of Cases Per Pallet   |   | 150 Cases                          |               |   |                                   |                     |           |          |  |
|  |   |                                    |               |   |                                   |                     |           |          |  |
| PACKAGING  | Inner Component Packaging                                   |                                    |               |   |                                   |                     |           |          |  |
|  | Type  | Materials                          | Weight        | Recycled Plastic %                        | Recyclable                        | Returnable          | Composite |          |  |
|  | Pot   | Plastic                            | 0.07 g        | 100.00 %                                  |                                   |                     |           |          |  |
|  | Pot   | Other                              | 0.01 g        | - %                                       |                                   |                     |           |          |  |
|  | Outer Case Packaging  |                                    |               |   |                                   |                     |           |          |  |
|  | Type  | Materials                          | Weight        | Recycled Plastic %                        | Recyclable                        | Returnable          | Composite |          |  |
|  | Case  | Paper/Cardboard                    | 162 g         | - %                                       |                                   |                     |           |          |  |
|  | Transport Packaging   |                                    |               |   |                                   |                     |           |          |  |
|  | Type  | Materials                          | Weight        | Recycled Plastic %                        | Recyclable                        | Returnable          | Composite |          |  |
|  | Other   | Plastic                            | 2000 g        | 100.00 %                                  |                                   | Yes                 |           |          |  |
|  | Other   | Wood                               | 35000 g       | - %                                       |                                   | Yes                 |           |          |  |
|  |   |                                    |               |   |                                   |                     |           |          |  |
|  |   |                                    |               |   |                                   |                     |           |          |  |
|  |   |                                    |               |   |                                   |                     |           |          |  |

OTHER  
INFORMATION

|                      |            |
|----------------------|------------|
| Intrastat/Taric Code | 19059070   |
| Commodity Code       | 1905907000 |

Manufacturer Comments

MEURSING CODE 7006 HFSS SCORE 14

CONTACT  
INFORMATION

Address

Petty Wood & Co  
Livingstone Road  
Andover  
SP10 5NS  
United Kingdom

Technical Contact

Helen Syme-Nicholson  
QA Manager  
hsnicholson@pettywood.com

P: (Phone) 01264345546

P: (Phone) 01264 345500

Complaints Contact

Sophia Twigg  
QA Assistant  
stwiss@pettywood.co.uk

P: (Phone) 0126434580

The information on the [Erudus System](#) has been supplied by the manufacturers of the products and, whilst the owners of the Erudus System take steps to ensure the information is regularly updated, they give no warranty and no guarantee that the information is accurate. Product information and ingredients may change, please always read product labels carefully in addition to using the information provided by Erudus.

We do not accept liability for any inaccuracies or incorrect information contained on this site.  
Please visit <http://www.erudus.com/terms-and-conditions> for full terms and conditions.