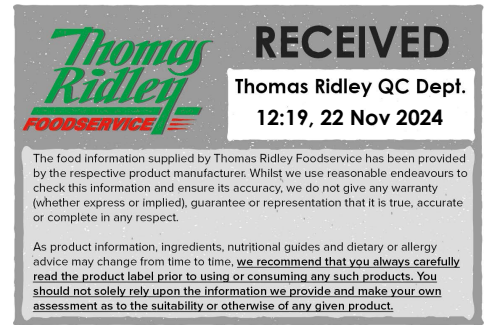


Changed Oct 07, 2024 11:34

Reviewed Oct 07, 2024 11:34

Erudus ID 9e2a87f9cbf1449db9db60ae004ae673

Version 3.1



21157

Beef Flavoured Vegan Stock Mix 800g

Beef Flavoured Vegan Stock Mix 2x800g

PRODUCT DESCRIPTION

A composite material produced by the dry blending of food ingredients. A brown coloured free-flowing powder, with a distinctive odour of beef. It has the characteristic appearance and flavour of Beef Stock when reconstituted with water.

Brand	Essential Cuisine Limited
Manufacturer Product Code	SW00828 - ECHALBTS/3
Manufacturer Version	1
Number	
Effective Date	Oct 7, 2024
Product Type	Food
Product Category	Gravy / Bouillon
Storage Type	Ambient
Erudus ID	9e2a87f9cbf1449db9db60ae004ae673
Specification Type	Generic



Inner Component GTIN	5029540000962
Outer Case GTIN	05029540000979



INGREDIENTS

Ingredient Declaration

Ingredients when reconstituted:

Vegetable Stock (Water, Onion, Tomato), Glucose, Salt, Yeast Extracts, Flavourings, Sugar, Colour (Caramel), Rapeseed Oil, Maltodextrin.

Ingredient Statements

Rapeseed oil is a processing aid only

ALLERGENS

Product Contains:

Celery/Celериac	No	Mustard	No
Cereals Containing Gluten	No	Nuts (Tree)	No
Barley	No	Almond nuts	No
Oats	No	Brazil nuts	No
Rye	No	Cashew nuts	No
Wheat (including Spelt and Khorasan)	No	Hazelnuts	No
Crustacea	No	Macadamia (Queensland) nuts	No
Eggs	No	Pecan nuts	No
Fish	No	Pistachio nuts	No
Lupin	No	Walnuts	No
Milk	No	Peanuts	No
Molluscs	No	Sesame Seeds	No
		Soybeans	No
		Sulphur Dioxide and Sulphites	No

Allergen Statement On Pack

N/A - no allergens present

FREE FROM CLAIMS

Gluten-Free	Yes
Palm Oil	No
Hydrogenated Vegetable Oil/Fat	No
GM Protein/DNA	No

SUPPLEMENTARY INGREDIENT INFORMATION

ADDITIVES

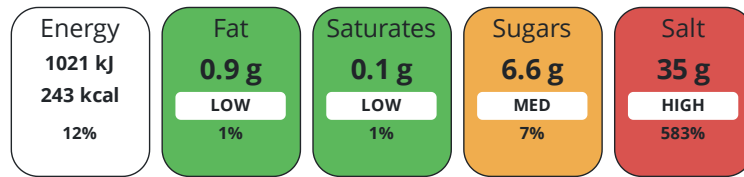
Product Contains:

Artificial Antioxidants	No	Artificial Flavourings	Yes
Artificial Colours	Yes	Artificial Preservatives	No
Artificial Flavour Enhancers	No	Artificial Sweeteners	No
Vegan Diet	Suitable for	Vegetarian Diet	Suitable for
Halal Diet	Certified	Kosher Diet	No

DIET SUITABILITY

NUTRITIONAL INFORMATION

Each 100g/ml portion contains:



of your reference intake.

Typical values per 100g/ml : Energy 243kcal / 1021kJ

Nutrient	per 100g	RI per 100g
Energy (kJ)	1021 kJ	12%
Energy (kcal)	243 kcal	12%
Fat	0.9 g	1%
of which Saturates	0.1 g	1%
Carbohydrate	40.8 g	16%
of which Sugars	6.6 g	7%
Fibre	1.2 g	
Protein	17.9 g	36%
Salt	35 g	583%

Source of Nutritional Information Calculation based on known values of ingredients

SUPPLEMENTARY NUTRITIONAL INFORMATION

HFSS (HIGH IN FAT, SALT AND SUGAR) HANDLING & STORAGE INFORMATION

HFSS Status Not Applicable (out of scope, exempt)

Directions For Use

To make stock, simply add the required amount of stock mix (12 - 20g) into 1 litre (1.75 pints) of boiling water and stir until dissolved.

Storage Instructions

Always reseal after use and keep in a cool, dry place.

Shelf Life from Time of Production 547 Days

ACCREDITATIONS/
CERTIFICATIONS/
ASSURANCE
SCHEMES
ORIGIN

BRCGS Certified

Food for Life Supplier Scheme

Other Accreditation

Product Country of Origin/Place of United Kingdom

Provenance

Additional Origin Details

Manufactured in the UK using materials sourced from EU and non EU countries

PRODUCT
CHARACTERISTICS
CONFIGURATION

Standards Testing

Case Configuration

Inner Pack Configuration

Total Quantity of Inner Components in 2 Units

Outer Case

Is the Outer Case Splittable? Yes

PRODUCT
WEIGHTS

Inner Component

Variable Weight Consumer Item No

Inner Component Weight 800 g

e mark Yes

Outer Case

Outer Case Gross Weight 1.9 kg

Outer Case Net Weight 1.6 kg

PRODUCT
DIMENSIONS

Inner Component

Inner Component Depth 132 mm

Inner Component Width 132 mm

Inner Component Height 132 mm

Outer Case

Outer Case Depth 270 mm

Outer Case Width 140 mm

Outer Case Height 145 mm

PALLET
INFORMATION

Quantity of Cases Per Pallet Layer 28 Cases

Pallet Type UK Standard Pallet

Quantity of Layers Per Pallet 8 Layers

Pallet Height 1.3 MTR

Quantity of Cases Per Pallet 224 Cases

Pallet Gross Weight 456.6 kg

PACKAGING

Inner Component Packaging

Type	Materials	Weight	Recycled Plastic %	Recyclable	Returnable	Composite
Tub	Plastic	68 g	- %			

Outer Case Packaging

Type	Materials	Weight	Recycled Plastic %	Recyclable	Returnable	Composite
Case	Paper/Cardboard	95 g	- %			

Transport Packaging

Type	Materials	Weight	Recycled Plastic %	Recyclable	Returnable	Composite
Other	Plastic	500 g	- %			
Other	Paper/Cardboard	500 g	- %			
Other	Wood	30000 g	- %			

MARKETING
INFORMATION

Marketing Description

A robust, meaty, tasting stock with an excellent beefy taste profile. This stock is free from artificial preservatives and colours and each tub makes up to 50 litres of stock. Approved by the Halal Food Authority.

OTHER
INFORMATION

Intrastat/Taric Code 2103

Manufacturer Comments

N/A

CONTACT
INFORMATION

Address

Essential Cuisine Limited
Essential Cuisine Ltd
Browning Way
Winsford
Cheshire
CW7 2RH
United Kingdom

P: (Phone) 01606 541490

The information on the [Erudus System](#) has been supplied by the manufacturers of the products and, whilst the owners of the Erudus System take steps to ensure the information is regularly updated, they give no warranty and no guarantee that the information is accurate. Product information and ingredients may change, please always read product labels carefully in addition to using the information provided by Erudus.

We do not accept liability for any inaccuracies or incorrect information contained on this site.
Please visit <http://www.erudus.com/terms-and-conditions> for full terms and conditions.