

Changed Oct 15, 2024 08:36

Reviewed Oct 15, 2024 08:36

Erudus ID 3181192945e640f7ac4c46f58c0264ff

Version 3.0

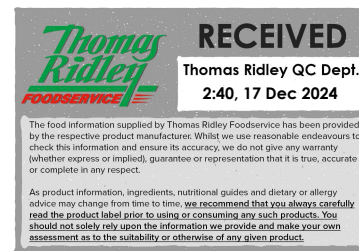
# Caterers Pride Solid Pack Apples 6 x 2.6kg

Solid Pack Apples In Water

## PRODUCT DESCRIPTION

Caterers Pride Solid Pack Apples 6 x 2.6kg

Brand	Caterers Choice Ltd
Manufacturer Product Code	APP0031
Product Type	Food
Product Category	Fruit - Canned
Storage Type	Ambient
Erudus ID	3181192945e640f7ac4c46f58c0264ff
Specification Type	Fruit and Vegetables



Inner Component GTIN	5027974423173
Manufacturer Component Code	APP0031
Outer Case GTIN	05027974423104



## INGREDIENTS

### Ingredient Declaration

Apples, Water, Acidity Regulator (Citric Acid), Antioxidant (Ascorbic Acid)

## ALLERGENS

Product Contains:

<b>Celery/Celeriac</b>	No	<b>Mustard</b>	No
<b>Cereals Containing Gluten</b>	No	<b>Nuts (Tree)</b>	No
<b>Barley</b>	No	<b>Almond nuts</b>	No
<b>Oats</b>	No	<b>Brazil nuts</b>	No
<b>Rye</b>	No	<b>Cashew nuts</b>	No
<b>Wheat (including Spelt and Khorasan)</b>	No	<b>Hazelnuts</b>	No
<b>Crustacea</b>	No	<b>Macadamia (Queensland) nuts</b>	No
<b>Eggs</b>	No	<b>Pecan nuts</b>	No
<b>Fish</b>	No	<b>Pistachio nuts</b>	No
<b>Lupin</b>	No	<b>Walnuts</b>	No
<b>Milk</b>	No	<b>Peanuts</b>	No
<b>Molluscs</b>	No	<b>Sesame Seeds</b>	No
		<b>Soybeans</b>	No
		<b>Sulphur Dioxide and Sulphites</b>	No

### Additional Allergen Information

N/A

SUPPLEMENTARY  
INGREDIENT  
INFORMATION

<b>Palm Oil</b>	No
<b>Hydrogenated Vegetable Oil/Fat</b>	No
<b>GM Protein/DNA</b>	No

ADDITIVES

*Product Contains:*

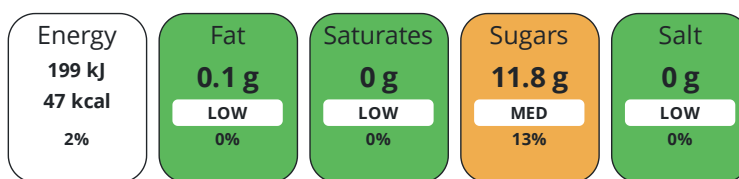
<b>Artificial Antioxidants</b>	No	<b>Artificial Flavourings</b>	No
<b>Artificial Colours</b>	No	<b>Artificial Preservatives</b>	No
<b>Artificial Flavour Enhancers</b>	No	<b>Artificial Sweeteners</b>	No

DIET  
SUITABILITY

<b>Vegan Diet</b>	Suitable for	<b>Vegetarian Diet</b>	Suitable for
<b>Halal Diet</b>	No	<b>Kosher Diet</b>	No

NUTRITIONAL  
INFORMATION

Each 100g/ml portion contains:



of your reference intake.

Typical values per 100g/ml : Energy 47kcal / 199kj

Nutrient	per 100g	RI per 100g
<b>Energy (kJ)</b>	199 kJ	2%
<b>Energy (kcal)</b>	47 kcal	2%
<b>Fat</b>	0.1 g	0%
of which Saturates	0 g	0%
<b>Carbohydrate</b>	11.8 g	5%
of which Sugars	11.8 g	13%
<b>Fibre</b>	1.8 g	
<b>Protein</b>	0.4 g	1%
<b>Salt</b>	0 g	0%

SUPPLEMENTARY  
NUTRITIONAL  
INFORMATION

HFSS (HIGH IN  
FAT, SALT AND  
SUGAR)  
HANDLING &  
STORAGE  
INFORMATION

<b>HFSS Status</b>	No
--------------------	----

**Directions For Use**

N/A

**Storage Instructions**

Store in a cool dry place, out of direct sunlight.

**Storage Instructions After Opening**

Once open, transfer to a suitable container, cover and refrigerate. Consume within 2 days.

<b>Shelf Life from Time of Production</b>	1095 Days
---	-----------

<b>Shelf Life From Opening</b>	2 Days
--------------------------------	--------

ACCREDITATIONS/  
CERTIFICATIONS/  
ASSURANCE  
SCHEMES  
ORIGIN

<b>BRCGS Certified</b>	<b>Other Accreditation</b>
------------------------	----------------------------

<b>Product Country of Origin/Place of Provenance</b>	Italy
--	-------

PRODUCT CHARACTERISTICS CONFIGURATION

Standards Testing

Case Configuration

Inner Pack Configuration

<b>Variable Inner Components in Outer Case</b>	No
<b>Total Quantity of Inner Components in Outer Case</b>	6 Units
<b>Is the Outer Case Splittable?</b>	Yes

PRODUCT WEIGHTS

Inner Component	
<b>Variable Weight Consumer Item</b>	Yes
<b>Inner Component Weight</b>	2.6 kg
<b>Net Drained Weight</b>	2.2 kg
Outer Case	
<b>Outer Case Gross Weight</b>	17.2 kg
<b>Outer Case Net Weight</b>	15.6 kg

PRODUCT DIMENSIONS

Inner Component	
<b>Inner Component Depth</b>	155 mm
<b>Inner Component Width</b>	155 mm
<b>Inner Component Height</b>	151 mm
Outer Case	
<b>Outer Case Depth</b>	470 mm
<b>Outer Case Width</b>	315 mm
<b>Outer Case Height</b>	151 mm

PALLET INFORMATION

<b>Quantity of Cases Per Pallet Layer</b>	7 Cases	<b>Pallet Type</b>	UK Standard Pallet
<b>Quantity of Layers Per Pallet</b>	9 Layers	<b>Pallet Height</b>	1.6 MTR
<b>Quantity of Cases Per Pallet</b>	63 Cases		

PACKAGING

Inner Component Packaging							
Type	Materials	Weight	Recycled Plastic %	Recyclable	Returnable	Composite	
Label	Paper/Cardboard	7 g	- %	Yes	No		
Can	Steel	242 g	- %	Yes	No		
Outer Case Packaging							
Type	Materials	Weight	Recycled Plastic %	Recyclable	Returnable	Composite	
Shrink Wrap	Plastic	38 g	0.00 %	No	No		
Tray	Paper/Cardboard / Carton Board	65 g	- %	Yes	No		
Transport Packaging							
Type	Materials	Weight	Recycled Plastic %	Recyclable	Returnable	Composite	
Pallet Wrap	Plastic	150 g	30.00 %		No		
Label	Paper/Cardboard	0.4 g	- %		No		
Pallet	Wood	28000 g	- %		No		

OTHER INFORMATION

**Manufacturer Comments**  
N/A

CONTACT  
INFORMATION

Address

Caterers Choice Ltd  
Parkdale House, 3 Longbow Close  
Pennine Business Park  
Huddersfield  
HD2 1GQ  
England

P: (Phone) 01484 532666

Technical Contact

Jenna Shackleton  
Technical Manager  
jenna@catererschoice.co.uk

P: (Phone) 01484 532666

The information on the [Erudus System](#) has been supplied by the manufacturers of the products and, whilst the owners of the Erudus System take steps to ensure the information is regularly updated, they give no warranty and no guarantee that the information is accurate. Product information and ingredients may change, please always read product labels carefully in addition to using the information provided by Erudus.

We do not accept liability for any inaccuracies or incorrect information contained on this site.  
Please visit <http://www.erudus.com/terms-and-conditions> for full terms and conditions.