

Changed Aug 22, 2024 13:24

Reviewed Aug 22, 2024 13:24

Erudus ID 1e975319dfd14a36a40ec7083e004e5f

Version 1.2

Fixed Diameter Sliced Honey Roast Ham 500g

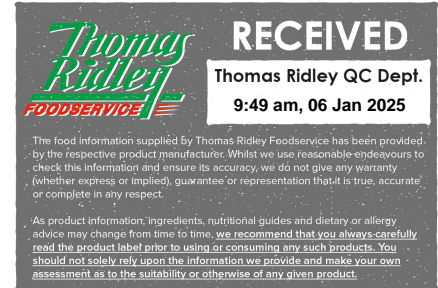
6 X 500g Sliced Honey Roast Ham (Fixed Diameter)

PRODUCT DESCRIPTION

Cooked, cured, boneless pork leg, sliced into gas flushed trays (30% Carbon Dioxide / 70 % Nitrogen).



| | |
|---------------------------|----------------------------------|
| Brand | Houghton Hams |
| Manufacturer Product Code | CATER07 |
| Product Type | Food |
| Product Category | Deli Meats & Processed Meats |
| Storage Type | Chilled |
| Erudus ID | 1e975319dfd14a36a40ec7083e004e5f |
| Specification Type | Meat |



INGREDIENTS

Ingredient Declaration

Pork Leg, Salt, Honey, Sugar, Stabilisers (Triphosphates, Diphosphates), Yeast Extract, Dextrose, Antioxidants (Sodium ascorbate, Sodium citrate), Preservative (Sodium nitrite), Natural Flavouring.

Ingredient Statements

Made from 100g of pork per 100g of finished product

ALLERGENS

Product Contains:

| | | | |
|--------------------------------------|----|-------------------------------|----|
| Celery/Celeriac | No | Mustard | No |
| Cereals Containing Gluten | No | Nuts (Tree) | No |
| Barley | No | Almond nuts | No |
| Oats | No | Brazil nuts | No |
| Rye | No | Cashew nuts | No |
| Wheat (including Spelt and Khorasan) | No | Hazelnuts | No |
| Crustacea | No | Macadamia (Queensland) nuts | No |
| Eggs | No | Pecan nuts | No |
| Fish | No | Pistachio nuts | No |
| Lupin | No | Walnuts | No |
| Milk | No | Peanuts | No |
| Molluscs | No | Sesame Seeds | No |
| | | Soybeans | No |
| | | Sulphur Dioxide and Sulphites | No |

SUPPLEMENTARY INGREDIENT INFORMATION

| | |
|--------------------------------|----|
| Palm Oil | No |
| Hydrogenated Vegetable Oil/Fat | No |
| GM Protein/DNA | No |

ADDITIVES

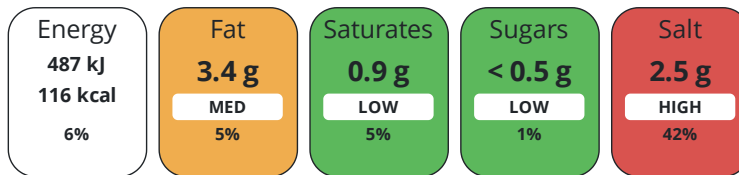
Product Contains:

| | | | |
|------------------------------|-----|--------------------------|-----|
| Artificial Antioxidants | Yes | Artificial Flavourings | No |
| Artificial Colours | No | Artificial Preservatives | Yes |
| Artificial Flavour Enhancers | No | Artificial Sweeteners | No |
| Halal Diet | No | Kosher Diet | No |

DIET SUITABILITY

NUTRITIONAL
INFORMATION

Each 100g/ml portion contains:



of your reference intake.

Typical values per 100g/ml : Energy 116kcal / 487kJ

| Nutrient | per 100g | RI per 100g | per 50g serving | RI per 50g serving |
|--------------------|----------|-------------|-----------------|--------------------|
| Energy (kJ) | 487 kJ | 6% | 243.5 kJ | 3% |
| Energy (kcal) | 116 kcal | 6% | 58 kcal | 3% |
| Fat | 3.4 g | 5% | 1.7 g | 2% |
| of which Saturates | 0.9 g | 5% | 0.5 g | 3% |
| Carbohydrate | 0.7 g | 0% | 0.4 g | 0% |
| of which Sugars | < 0.5 g | 1% | 0.3 g | 0% |
| Fibre | < 0.5 g | | 0.3 g | |
| Protein | 21 g | 42% | 10.5 g | 21% |
| Salt | 2.5 g | 42% | 1.3 g | 22% |

Serving Size 50 g

Source of Nutritional Information Manufacturers analysis

SUPPLEMENTARY
NUTRITIONAL
INFORMATION

HANDLING &
STORAGE
INFORMATION

Directions For Use

Ready to Eat

Storage Instructions

Keep refrigerated (2-5 °C)

Storage Instructions After Opening

Keep refrigerated (2-5 °C)

Shelf Life from Time of Production 21 Days

Shelf Life From Opening 2 Days

ACCREDITATIONS/
CERTIFICATIONS/
ASSURANCE
SCHEMES
ORIGIN

BRCGS Certified

Organic

Red Tractor

Product Country of Origin/Place of Spain

Provenance

PRODUCT
CHARACTERISTICS

Standards Testing

Do you undertake trend analysis of microbiological results? Yes

Is shelf life testing undertaken? Yes

Microbiological Standards

| Organism | Description | Frequency | Target | Maximum | Sample (g or ml) |
|---------------------------------------|-------------|-----------|--------|---------|------------------|
| Clostridium Perfringens (cfu/g or ml) | | Monthly | <10 | 100 | 100 |
| E. Coli (cfu/g or ml) | | Monthly | <10 | 10 | 100 |

| Organism | Description | Frequency | Target | Maximum | Sample (g or ml) |
|--|-------------|-----------|--------|---------|------------------|
| Enterobacteriaceae (cfu/g or ml) | | Monthly | <100 | 1000 | 100 |
| Salmonella (cfu/g or ml) | | Monthly | =0 | 0 | 25 |
| Aerobic Colony Count (ACC) (cfu/g or ml) | | Monthly | <1000 | 10000 | 100 |
| Coagulase-positive Staphylococci (cfu/g or ml) | | Monthly | <20 | 100 | 100 |
| Listeria Monocytogenes (cfu/g or ml) | | Monthly | =0 | 0 | 25 |
| Listeria SPP (cfu/g or ml) | | Monthly | =0 | 19 | 25 |

SUPPLEMENTARY INFORMATION

| | | | |
|---------------------------------|----|-----------------------|----|
| Reformed | No | Skeletal Bones | No |
| Fried During Manufacture | No | Skin | No |

ORGANOLEPTICS

Appearance

Fully cured, cooked honey roast ham with the characteristic pink colour, packed into a gas flushed PET/PE black tray and clear film, labelled and free from any contamination, blowing or other evidence of damage.

Aroma

Pleasant, typical of a cooked ham. No off odours.

Taste

Pleasant, typical of a cooked ham, free from off flavours or taints.

Texture

Firm but tender with no excessive chewiness or gristles

HAZARD CONTROLS

| | | | |
|--------------------------------|---|--------------------------|---|
| Metal Detection | Yes | | |
| CONFIGURATION | Case Configuration | Inner Pack Configuration | |
| | Total Quantity of Inner Components in Outer Case | 6 Units | Is Inner Pack Splittable? No |
| | Total Quantity of Inner Packs in Outer Case | 6 Units | Quantity of Inner Components in Inner Pack 1 |
| | Is the Outer Case Splittable? | Yes | |
| PRODUCT WEIGHTS | Inner Component | Inner Pack | |
| | Variable Weight Consumer Item | Yes | Inner Pack Gross Weight 524 g |
| | Inner Component Weight | 500 g | Inner Pack Net Weight 500 g |
| | e mark | Yes | |
| Outer Case | | | |
| Outer Case Gross Weight | 3.1 kg | | |
| Outer Case Net Weight | 3 kg | | |

PRODUCT DIMENSIONS

| Inner Component | | Inner Pack | |
|-------------------------------|--------|--------------------------|--------|
| Inner Component Depth | 240 mm | Inner Pack Depth | 240 mm |
| Inner Component Width | 190 mm | Inner Pack Width | 190 mm |
| Inner Component Height | 30 mm | Inner Pack Height | 30 mm |
| Outer Case | | | |
| Outer Case Depth | 490 mm | | |
| Outer Case Width | 395 mm | | |
| Outer Case Height | 168 mm | | |

PALLET INFORMATION

| | | | |
|---|-----------|----------------------------|--------------------|
| Quantity of Cases Per Pallet Layer | 24 Cases | Pallet Type | UK Standard Pallet |
| Quantity of Layers Per Pallet | 7 Layers | Pallet Height | 1.5 MTR |
| Quantity of Cases Per Pallet | 168 Cases | Pallet Gross Weight | 604.8 kg |

PACKAGING

| Inner Component Packaging | | | | | | |
|---------------------------|-----------------|---------|--------------------|------------|------------|-----------|
| Type | Materials | Weight | Recycled Plastic % | Recyclable | Returnable | Composite |
| Film | Plastic | 24 g | - % | | | |
| Outer Case Packaging | | | | | | |
| Type | Materials | Weight | Recycled Plastic % | Recyclable | Returnable | Composite |
| Case | Paper/Cardboard | 100 g | - % | | | |
| Transport Packaging | | | | | | |
| Type | Materials | Weight | Recycled Plastic % | Recyclable | Returnable | Composite |
| Other | Plastic | 300 g | - % | | | |
| Other | Paper/Cardboard | 1000 g | - % | | | |
| Other | Wood | 13000 g | - % | | | |

OTHER INFORMATION

Identification/Health Marks United Kingdom
NM005

Manufacturer Comments

None

CONTACT INFORMATION

Address
Houghton Hams
Unit 58-68, Tenter Road
Moulton Park Industrial Estate
Northampton
NN3 6AX
England

P: (Phone) 01604644247

The information on the [Erudus System](#) has been supplied by the manufacturers of the products and, whilst the owners of the Erudus System take steps to ensure the information is regularly updated, they give no warranty and no guarantee that the information is accurate. Product information and ingredients may change, please always read product labels carefully in addition to using the information provided by Erudus.

We do not accept liability for any inaccuracies or incorrect information contained on this site.
Please visit <http://www.erudus.com/terms-and-conditions> for full terms and conditions.