

Baron Bigod

Baron Bigod

PRODUCT DESCRIPTION

Semi-soft cream coloured cheese with white and cream coloured rind.

Brand	Carron Lodge Ltd.
Manufacturer Product Code	BIGOD
Product Type	Food
Product Category	Cheese
Storage Type	Chilled
Erudus ID	5a51372d33ab404883b244eb6dad2a66
Specification Type	Legacy



INGREDIENTS

Ingredient Declaration

Cows’ MILK, Geotrichum yeast cultures, Penicillium mould cultures, Animal rennet, Cooking salt

ALLERGENS

Product Contains:

Celery/Celeriac	No
Cereals Containing Gluten	No
Barley	No
Oats	No
Rye	No
Wheat (including Spelt and Khorasan)	No
Crustacea	No
Eggs	No
Fish	No
Lupin	No
Milk	Yes
Molluscs	No

Mustard	No
Nuts (Tree)	No
Almond nuts	No
Brazil nuts	No
Cashew nuts	No
Hazelnuts	No
Macadamia (Queensland) nuts	No
Pecan nuts	No
Pistachio nuts	No
Walnuts	No
Peanuts	No
Sesame Seeds	No
Soybeans	No
Sulphur Dioxide and Sulphites	No

SUPPLEMENTARY INGREDIENT INFORMATION

Palm Oil	No
Hydrogenated Vegetable Oil/Fat	No
GM Protein/DNA	No

ADDITIVES

Product Contains:

Artificial Antioxidants	No
Artificial Colours	No
Artificial Flavour Enhancers	No

Artificial Flavourings	No
Artificial Preservatives	No
Artificial Sweeteners	No

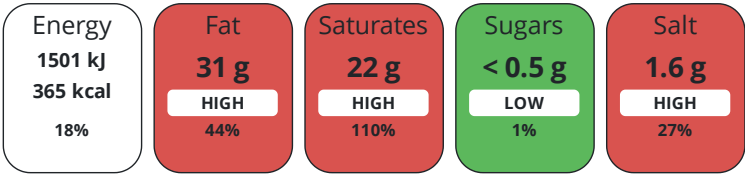
DIET SUITABILITY

Suitable for Coeliacs	No
Kosher Diet	No
Vegan Diet	No

Halal Diet	No
Vegetarian Diet	No

NUTRITIONAL
INFORMATION

Each 100g/ml portion contains:



of your reference intake.

Typical values per 100g/ml : Energy 365kcal / 1501kJ

Nutrient	per 100g/ml	RI per 100g/ml
Energy (kJ)	1501 kJ	18%
Energy (kcal)	365 kcal	18%
Fat	31 g	44%
of which Saturates	22 g	110%
Carbohydrate	2 g	1%
of which Sugars	< 0.5 g	1%
Protein	21 g	42%
Salt	1.6 g	27%

SUPPLEMENTARY
NUTRITIONAL
INFORMATION

HANDLING &
STORAGE
INFORMATION

Directions For Use

Ready to eat

Storage Instructions

Store below 8°C

Shelf Life from Time of Production21 Days

SALSA (Safe & Local Supplier Approval)

Product Country of Origin/Place ofUnited Kingdom

Provenance

Additional Origin Details

Fen Farm Dairy Ltd, Flixton Road, Bungay, NR35 1PD

PRODUCT
CHARACTERISTICS

Standards Testing

Do you undertake trend analysis ofmicrobiological results?YesIs shelf life testing undertaken?Yes

Microbiological Standards

Organism	Description	Frequency	Target	Maximum	Sample (g or ml)
E. Coli (cfu/g or ml)		Every Batch	<10	10	-
Listeria Monocytogenes (cfu/g or ml)		Fortnightly	=0	0	-
Staphylococcus Aureus (cfu/g or ml)		Every Batch	<10	10	-
Salmonella (cfu/g or ml)		Fortnightly	=0	0	-

CONFIGURATION	Case Configuration		Inner Pack Configuration	
	Total Quantity of Inner Components in Outer Case		1 Units	
	Is the Outer Case Splittable?		Yes	
PRODUCT WEIGHTS	Inner Component			
	Variable Weight Consumer Item		No	
	Weight/Volume		Available in 250g, 1kg and 3kg	
	Outer Case			
	Outer Case Gross Weight		0 kg	
PRODUCT DIMENSIONS	Outer Case Net Weight		0 kg	
	Inner Component			
	Inner Component Depth		0 mm	
	Inner Component Width		0 mm	
	Inner Component Height		0 mm	
PALLET INFORMATION	Outer Case			
	Outer Case Depth		0 mm	
	Outer Case Width		0 mm	
	Outer Case Height		0 mm	
	Quantity of Cases Per Pallet Layer		1 Cases	
OTHER INFORMATION	Quantity of Layers Per Pallet		1 Layers	
	Quantity of Cases Per Pallet		1 Cases	
CONTACT INFORMATION			Pallet Height	
			0 MTR	
CONTACT INFORMATION			Identification/Health Marks	
			GB LO 065	
CONTACT INFORMATION	Address			
	Carron Lodge Ltd.			
	Park Head Farm, Carron Lane			
CONTACT INFORMATION	Inglewhite			
	Preston			
	Lancashire			
CONTACT INFORMATION	PR3 2LN			
	United Kingdom			
CONTACT INFORMATION	P: (Phone) 01995 640352			

The information on the [Erudus System](#) has been supplied by the manufacturers of the products and, whilst the owners of the Erudus System take steps to ensure the information is regularly updated, they give no warranty and no guarantee that the information is accurate. Product information and ingredients may change, please always read product labels carefully in addition to using the information provided by Erudus.

We do not accept liability for any inaccuracies or incorrect information contained on this site.
Please visit <http://www.erudus.com/terms-and-conditions> for full terms and conditions.