

Paneer 1.6kg

Paneer 1.6kg

PRODUCT DESCRIPTION

An Indian style cheese. This Paneer cheese can be added into many different recipes; it is moist, soft and carries the flavours of the dish it is incorporated into.

Brand	Carron Lodge Ltd.
Manufacturer Product Code	PANEER
Product Type	Food
Product Category	Cheese
Storage Type	Chilled
Erudus ID	2eaf8b32f17f4434b7d6cf5856b039ab
Specification Type	Legacy



Inner Component GTIN5056114203085



INGREDIENTS

Ingredient Declaration
Pasteurised Cow's MILK, Citric Acid (processing aid)

ALLERGENS

Product Contains:

Celery/Celeriac	No
Cereals Containing Gluten	No
Barley	No
Oats	No
Rye	No
Wheat (including Spelt and Khorasan)	No
Crustacea	No
Eggs	No
Fish	No
Lupin	No
Milk	Yes
Molluscs	No

Mustard	No
Nuts (Tree)	No
Almond nuts	No
Brazil nuts	No
Cashew nuts	No
Hazelnuts	No
Macadamia (Queensland) nuts	No
Pecan nuts	No
Pistachio nuts	No
Walnuts	No
Peanuts	No
Sesame Seeds	No
Soybeans	No
Sulphur Dioxide and Sulphites	No

SUPPLEMENTARY INGREDIENT INFORMATION

Palm Oil	No
Hydrogenated Vegetable Oil/Fat	No
GM Protein/DNA	No

ADDITIVES

Product Contains:

Artificial Antioxidants	No
Artificial Colours	No
Artificial Flavour Enhancers	No

Artificial Flavourings	No
Artificial Preservatives	No
Artificial Sweeteners	No

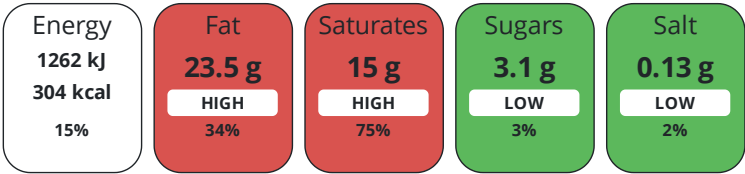
DIET
SUITABILITY

Suitable for Coeliacs	Yes
Kosher Diet	No
Vegan Diet	No

Halal Diet	No
Vegetarian Diet	Suitable for

NUTRITIONAL
INFORMATION

Each 100g/ml portion contains:



of your reference intake.

Typical values per 100g/ml : Energy 304kcal / 1262kJ

Nutrient	per 100g/ml	RI per 100g/ml	per 30g/ml serving	RI per 30g/ml serving
Energy (kJ)	1262 kJ	15%	378.6 kJ	5%
Energy (kcal)	304 kcal	15%	91.2 kcal	5%
Fat	23.5 g	34%	7.1 g	10%
of which Saturates	15 g	75%	4.5 g	23%
Carbohydrate	3.1 g	1%	0.9 g	0%
of which Sugars	3.1 g	3%	0.9 g	1%
Fibre	0 g		-	
Protein	19 g	38%	5.7 g	11%
Salt	0.13 g	2%	-	
Sodium	50 mg		15 mg	
Serving Size	30 g			

SUPPLEMENTARY
NUTRITIONAL
INFORMATION

HANDLING &
STORAGE
INFORMATION

Directions For Use

Sold as a raw product and must be cooked or baked before consumption.

Storage Instructions

Keep Refrigerated and use within 3 days of opening.

Shelf Life from Time of Production	21 Days
------------------------------------	---------

ACCREDITATIONS/
CERTIFICATIONS/
ASSURANCE
SCHEMES
ORIGIN

SALSA (Safe & Local Supplier Approval)
--

Other Accreditation

Product Country of Origin/Place of Provenance	United Kingdom
---	----------------

Additional Origin Details

Lancashire

Standards Testing

PRODUCT
CHARACTERISTICS

	<div>Do you undertake trend analysis of microbiological results?</div>	Yes	<div>Is shelf life testing undertaken?</div>		Yes		
	Microbiological Standards						
	<div>Organism</div>	<div>Description</div>	<div>Frequency</div>	<div>Target</div>	<div>Maximum</div>	<div>Sample (g or ml)</div>	
	E. Coli (cfu/g or ml)		Every Batch	<10	100	-	
	Listeria Monocytogenes (cfu/g or ml)	Absent in 25g	Every Batch	<0	0	-	
	Staphylococcus Aureus (cfu/g or ml)		Occasionally	<20	100	-	
	Salmonella (cfu/g or ml)	Absent in 25g	Occasionally	<0	0	-	
	Analytical Standards						
	<div>Test</div>	<div>Description</div>	<div>Frequency</div>	<div>Target</div>	<div>Range</div>	<div>Sample (g or ml)</div>	
	Moisture (%)		Every Batch	<54	45 to 54	-	
	pH		Every Batch	<5.6	5 to 5.6	-	
CONFIGURATION	Case Configuration		Inner Pack Configuration				
	<div>Total Quantity of Inner Components in Outer Case</div>	1 Units					
	<div>Is the Outer Case Splittable?</div>	No					
PRODUCT WEIGHTS	Inner Component						
	<div>Variable Weight Consumer Item Weight/Volume</div>	No					
	1.6kg						
	Outer Case						
	<div>Outer Case Gross Weight</div>	0 kg					
	<div>Outer Case Net Weight</div>	0 kg					
PRODUCT DIMENSIONS	Inner Component						
	<div>Inner Component Depth</div>	120 mm					
	<div>Inner Component Width</div>	240 mm					
	<div>Inner Component Height</div>	40 mm					
	Outer Case						
	<div>Outer Case Depth</div>	0 mm					
	<div>Outer Case Width</div>	0 mm					
	<div>Outer Case Height</div>	0 mm					
PALLET INFORMATION	<div>Quantity of Cases Per Pallet Layer</div>	1 Cases		<div>Pallet Height</div>	0 MTR		
	<div>Quantity of Layers Per Pallet</div>	1 Layers		<div>Pallet Gross Weight</div>	0 kg		
	<div>Quantity of Cases Per Pallet</div>	1 Cases					
PACKAGING	Inner Component Packaging						
	<div>Type</div>	<div>Materials</div>	<div>Weight</div>	<div>Recycled Plastic %</div>	<div>Recyclable</div>	<div>Returnable</div>	<div>Composite</div>
	Poly Treated PET/PE	Plastic	14 g	- %			
OTHER INFORMATION	<div>Intrastat/Taric Code</div>	04061050		<div>Identification/Health Marks</div>	GB PN 005		
	<div>Manufacturer Comments</div>						
	~						

CONTACT
INFORMATION

Address

Carron Lodge Ltd.
Park Head Farm, Carron Lane
Inglewhite
Preston
Lancashire
PR3 2LN
United Kingdom

P: (Phone) 01995 640352

The information on the [Erudus System](#) has been supplied by the manufacturers of the products and, whilst the owners of the Erudus System take steps to ensure the information is regularly updated, they give no warranty and no guarantee that the information is accurate. Product information and ingredients may change, please always read product labels carefully in addition to using the information provided by Erudus.

We do not accept liability for any inaccuracies or incorrect information contained on this site.
Please visit <http://www.erudus.com/terms-and-conditions> for full terms and conditions.