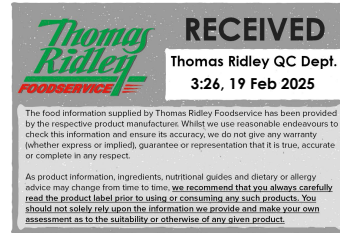


Changed Feb 22, 2024 16:07

Reviewed Feb 22, 2024 16:07

Erudus ID 729f44bd3e1d4ed68cf985b07ffb6226

Version 1.0



YARG CORNISH NETTLE WHEEL 1.7KG

Yarg Cornish Nettle Wheel 1.7kg

PRODUCT DESCRIPTION

A semi-hard pasteurised cheese. The product is a hand made cheese, made in open vats, from grass fed, full fat cows milk. Naturally mould ripened, semi-hard cows milk cheese with a distinctive and unique nettle coating

Brand	Cheese Cellar (Harvey & Brockless)
Manufacturer Product Code	EC479
Product Type	Food
Product Category	Semi-Hard Cheese
Storage Type	Chilled
Erudus ID	729f44bd3e1d4ed68cf985b07ffb6226
Specification Type	Cheese



INGREDIENTS

Ingredient Declaration

Pasteurised Cows **MILK**, Salt, Nettle Leaves, Starter Culture, Vegetarian Rennet, Firming Agent: Calcium Chloride, Mould Culture: Penicillium Candidum.

ALLERGENS

Product Contains:

Celery/Celeriac	No	Mustard	No
Cereals Containing Gluten	No	Nuts (Tree)	No
Barley	No	Almond nuts	No
Oats	No	Brazil nuts	No
Rye	No	Cashew nuts	No
Wheat (including Spelt and Khorasan)	No	Hazelnuts	No
Crustacea	No	Macadamia (Queensland) nuts	No
Eggs	No	Pecan nuts	No
Fish	No	Pistachio nuts	No
Lupin	No	Walnuts	No
Milk	Yes	Peanuts	No
Molluscs	No	Sesame Seeds	No
		Soybeans	No
		Sulphur Dioxide and Sulphites	No

SUPPLEMENTARY INGREDIENT INFORMATION

Palm Oil	No
Hydrogenated Vegetable Oil/Fat	No
GM Protein/DNA	No

ADDITIVES

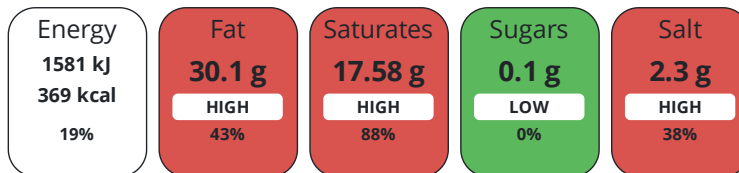
Product Contains:

DIET SUITABILITY

Vegetarian Diet	Suitable for	Halal Diet	No
Kosher Diet	No		

NUTRITIONAL
INFORMATION

Each 100g/ml portion contains:



of your reference intake.

Typical values per 100g/ml : Energy 369kcal / 1581kJ

Nutrient	per 100g	RI per 100g	per 100g serving	RI per 100g serving
Energy (kJ)	1581 kJ	19%	1581 kJ	19%
Energy (kcal)	369 kcal	18%	369 kcal	18%
Fat	30.1 g	43%	30.1 g	43%
of which Saturates	17.58 g	88%	17.6 g	88%
of which Mono-unsaturates	8.59 g		8.6 g	
of which Polyunsaturates	1.44 g		1.4 g	
Carbohydrate	2.7 g	1%	2.7 g	1%
of which Sugars	0.1 g	0%	0.1 g	0%
Fibre	< 0.5 g		0.5 g	
Protein	22.3 g	45%	22.3 g	45%
Salt	2.3 g	38%	2.3 g	38%
Sodium	920 mg		920 mg	

Serving Size 100 g

SUPPLEMENTARY
NUTRITIONAL
INFORMATION

HANDLING &
STORAGE
INFORMATION

Directions For Use

N/A

Storage Instructions

Chilled between 0 -5 deg C

Shelf Life from Time of Production 84 Days

Shelf Life From Opening 10 Days

SALSA (Safe & Local Supplier Approval)

ACCREDITATIONS/
CERTIFICATIONS/
ASSURANCE
SCHEMES
ORIGIN

Product Country of Origin/Place of United Kingdom

Provenance

Standards Testing

PRODUCT
CHARACTERISTICS

Do you undertake trend analysis of microbiological results?	No	Is shelf life testing undertaken? Commercially Sterile	No
---	----	--	----

Microbiological Standards

Organism	Description	Frequency	Target	Maximum	Sample (g or ml)
E. Coli (cfu/g or ml)		Occasionally	<10	10	1
Staphylococcus Aureus (cfu/g or ml)		Every Batch	<20	20	1

Organism	Description	Frequency	Target	Maximum	Sample (g or ml)
Listeria SPP (cfu/g or ml)		Every Batch	=0	0	25
Salmonella (cfu/g or ml)		Every Batch	=0	0	25
Enterobacteriaceae (cfu/g or ml)		Every Batch	<10	10	1
Coliforms (cfu/g or ml)		Every Batch	<10	10	1

Analytical Standards

Test	Description	Frequency	Target	Range	Sample (g or ml)
pH		Occasionally	=5.2	3.2 to 7.2	10
Moisture (%)		Occasionally	=39	37 to 41	10
Fat Content (%)		Occasionally	=31	20 to 32	10

CONFIGURATION

Case Configuration

Inner Pack Configuration

Variable Inner Components in Outer Case	Yes	Is Inner Pack Splittable?	No
Total Quantity of Inner Components in Outer Case	1 Units		
Is the Outer Case Splittable?	No		

PRODUCT WEIGHTS

Inner Component

Variable Weight Consumer Item	Yes
e mark	No

Outer Case

Outer Case Gross Weight	1.7 kg
Outer Case Net Weight	1.7 kg

PRODUCT DIMENSIONS

Inner Component

Inner Component Depth	500 mm
Inner Component Width	250 mm
Inner Component Height	0.01 mm

Inner Pack

Inner Pack Depth	500 mm
Inner Pack Width	250 mm

Outer Case

Outer Case Depth	255 mm
Outer Case Width	145 mm
Outer Case Height	90 mm

PALLET INFORMATION

Quantity of Cases Per Pallet Layer	1 Cases
Quantity of Layers Per Pallet	1 Layers
Quantity of Cases Per Pallet	1 Cases

Pallet Height	1 MTR
Pallet Gross Weight	1 kg

PACKAGING

Inner Component Packaging

Type	Materials	Weight	Recycled Plastic %	Recyclable	Returnable	Composite
Overwrap	Paper/Cardboard / Paper	15 g	- %	Yes	No	No

Outer Case Packaging

Type	Materials	Weight	Recycled Plastic %	Recyclable	Returnable	Composite
Box	Paper/Cardboard / Cardboard	95 g	- %	Yes	No	No

MARKETING INFORMATION

Marketing Description

YARG CORNISH NETTLE WHEEL 1.7KG

OTHER
INFORMATION
CONTACT
INFORMATION

Address

Cheese Cellar (Harvey & Brockless)
44-54 Stewarts Road
London
SW8 4DF
England

P: (Phone) 0207 819 6000

Complaints Contact

Complaint Team
complaints@harveyandbrockless.co.uk

P: (Phone) 0207 819 6000

Technical Contact

Technical Compliance Team
Technical
technicalqueries@harveyandbrockless.co.uk

Commercial Contact

Sophie White
Wholesale Account Manager
Customer.Service@harveyandbrockless.co.uk

The information on the [Erudus System](#) has been supplied by the manufacturers of the products and, whilst the owners of the Erudus System take steps to ensure the information is regularly updated, they give no warranty and no guarantee that the information is accurate. Product information and ingredients may change, please always read product labels carefully in addition to using the information provided by Erudus.

We do not accept liability for any inaccuracies or incorrect information contained on this site.
Please visit <http://www.erudus.com/terms-and-conditions> for full terms and conditions.