

Changed May 02, 2024 08:47

Reviewed May 02, 2024 08:47

Erudus ID c96d3164c1944f5387483e44ec90af56

Version 1.1

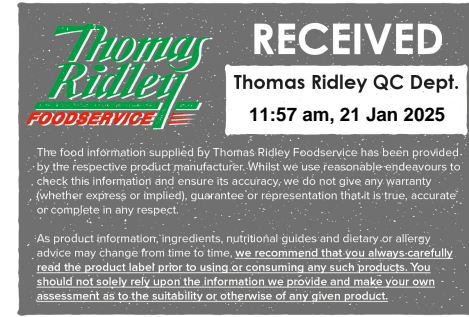
Dark Chocolate pudding with Chocolate Sauce

Dark Chocolate Pudding With Chocolate Sauce 12x185g

PRODUCT DESCRIPTION

A round chocolate sponge topped with a dark chocolate sauce

Brand	Langtons Ltd
Manufacturer Product Code	LR12067
Product Type	Food
Product Category	Desserts
Storage Type	Frozen
Erudus ID	c96d3164c1944f5387483e44ec90af56
Specification Type	Generic
Inner Component GTIN	5060055740677
Outer Case GTIN	5060055740677



INGREDIENTS

Ingredient Declaration

New Dark Chocolate Sauce - Water, Brown Sugar Dark Soft, Whirl - Vegetable oil (rapeseed oil, fully hydrogenated rapeseed oil), salt, emulsifier - lecithins (E322), natural flavouring, colour - Beta-carotene(E160a), Glucose Syrup (WHEAT, SULPHITES), Sweet Condensed Milk- (Whole MILK, Sucrose), Cocoa Powder, Synergie (Maize Starch)

Granulated Sugar (SLS) - (Sugar (Beet), (Cane)

Rapeseed Oil

EGG, whole (EGG)

Heat Treated Flour - WHEAT Flour - (Calcium, Iron, Niacin, Thiamin)

Mississippi Chocolate Conc Muffin Mix - WHEAT Flour - (Calcium, iron, Niacin, Thiamin), Cocoa Powder, Modified Starch, Chocolate - [Sugar, Cocoa Mass, Fat reduced Cocoa Powder], Fat reduced Cocoa Powder, Raising Agents - Sodium Bicarbonate E500(ii), Disodium Diphosphate E450(i), Dicalcium Phosphate E342(ii), Dextrose (WHEAT), Vegetable Oil (Rapeseed), WHEAT Starch, Emulsifiers - Mono - and Diglycerides of Fatty Acids E471, Propane 1,2 diol esters of Fatty Acids E477, Sodium Stearoyl-2-Lactylate E481, Wheat Gluten (WHEAT) (Flavouring Natural, Xanthan Gum E415)

Water.

ALLERGENS

Product Contains:

Celery/Celery	No	Mustard	No
Cereals Containing Gluten	Yes	Nuts (Tree)	No
Barley	No	Almond nuts	No
Oats	No	Brazil nuts	No
Rye	No	Cashew nuts	No
Wheat (including Spelt and Khorasan)	Yes	Hazelnuts	No
Crustacea	No	Macadamia (Queensland) nuts	No
Eggs	Yes	Pecan nuts	No
Fish	No	Pistachio nuts	No
Lupin	No	Walnuts	No
Milk	Yes	Peanuts	No
Molluscs	No	Sesame Seeds	No
		Soybeans	No
		Sulphur Dioxide and Sulphites	Yes

FREE FROM CLAIMS

Free From Fish	Yes
Free From Lupin	Yes
Free From Molluscs	Yes

Free From Mustard Yes

SUPPLEMENTARY INGREDIENT INFORMATION

Palm Oil	Yes
Hydrogenated Vegetable Oil/Fat	No
GM Protein/DNA	No

Alcoholic Strength %Vol (ABV) 0 % Vol

ADDITIVES

Product Contains:

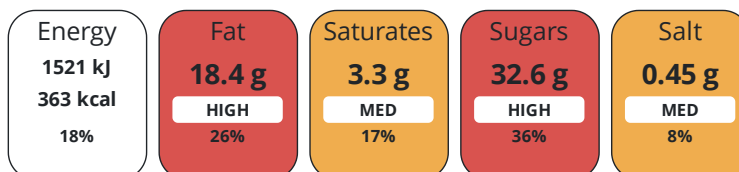
DIET SUITABILITY

Vegan Diet	No
Halal Diet	No

Vegetarian Diet	Suitable for
Kosher Diet	No

NUTRITIONAL INFORMATION

Each 100g/ml portion contains:



of your reference intake.

Typical values per 100g/ml : Energy 363kcal / 1521kJ

Nutrient	per 100g	RI per 100g
Energy (kJ)	1521 kJ	18%
Energy (kcal)	363 kcal	18%
Fat	18.4 g	26%
of which Saturates	3.3 g	17%
Carbohydrate	45.5 g	18%
of which Sugars	32.6 g	36%
Protein	4 g	8%
Salt	0.45 g	8%

Serving Size Description 185.00

SUPPLEMENTARY NUTRITIONAL INFORMATION

HANDLING & STORAGE INFORMATION

Directions For Use

From frozen, partially remove film lid and microwave until piping hot (from 30 to 60 seconds depending on wattage).

Storage Instructions

Store frozen at -18°C or below

Shelf Life from Time of Production 730 Days

ACCREDITATIONS/ CERTIFICATIONS/ ASSURANCE SCHEMES ORIGIN

BRCGS Certified

Product Country of Origin/Place of United Kingdom

Provenance

Additional Origin Details

UK, France, Holland, Germany, India, China, USA,

PRODUCT CHARACTERISTICS

Standards Testing

CONFIGURATION

Case Configuration

Inner Pack Configuration

Total Quantity of Inner Components in Outer Case 12 Units

PRODUCT WEIGHTS

Inner Component
Variable Weight Consumer Item No
Inner Component Weight 185 g
 Outer Case
Outer Case Gross Weight 3.33 kg
Outer Case Net Weight 3.06 kg

PRODUCT DIMENSIONS

Inner Component
Inner Component Depth 60 mm
Inner Component Width 60 mm
Inner Component Height 60 mm
 Outer Case
Outer Case Depth 345 mm
Outer Case Width 290 mm
Outer Case Height 123 mm

PALLET INFORMATION

Quantity of Cases Per Pallet Layer 10 Cases
Quantity of Layers Per Pallet 15 Layers
Quantity of Cases Per Pallet 150 Cases

Pallet Height 1.4 MTR

OTHER INFORMATION CONTACT INFORMATION

Address
 Langtons Ltd
 Progress Way, Mid Suffolk Business Park
 Langton Green
 Eye
 Suffolk
 IP23 7HU
 England

Technical Contact
 Caroline Payne
 QA Manager
 caroline@langtons.com
 P: (Phone) 01379870181

P: (Phone) 01379870181

Complaints Contact
 Caroline Payne
 QA Manager
 caroline@langtons.com

Commercial Contact
 Justine Jaeger
 Sales & Marketing Representative
 Justine@langtons.com

P: (Phone) 01379870181

P: (Phone) 01379870181

The information on the [Erudus System](#) has been supplied by the manufacturers of the products and, whilst the owners of the Erudus System take steps to ensure the information is regularly updated, they give no warranty and no guarantee that the information is accurate. Product information and ingredients may change, please always read product labels carefully in addition to using the information provided by Erudus.

We do not accept liability for any inaccuracies or incorrect information contained on this site. Please visit <http://www.erudus.com/terms-and-conditions> for full terms and conditions.