

Changed Oct 08, 2024 14:00

Reviewed Oct 08, 2024 14:00

Erudus ID 7182eaf41e0c4505b09f50568325d81d

Version 2.0



Square Stem Ginger Pudding with Ginger Sauce (18)

Stem Ginger Pudding With Ginger Sauce

PRODUCT DESCRIPTION

A square stem ginger pudding with ginger sauce.

Brand	Langtons Ltd
Manufacturer Product Code	LS18056
Product Type	Food
Product Category	Desserts
Storage Type	Frozen
Erudus ID	7182eaf41e0c4505b09f50568325d81d
Specification Type	Bakery Products

Outer Case GTIN 5060055740561



INGREDIENTS

Ingredient Declaration

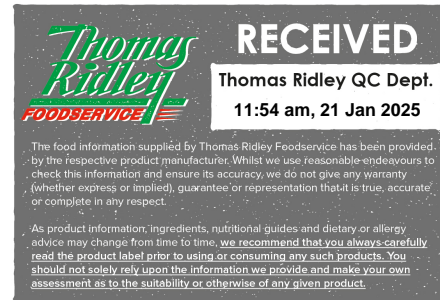
Ginger Sauce - (43%) (Granulated Sugar, Water, Ginger Crush, Synergie - Maize Starch),
 Granulated Sugar - (Sugar (Beet), (Cane)),
 Liquid Whole EGG,
 Flour (WHEAT) - WHEAT Flour (Calcium, Iron, Niacin, Thiamin),
 Rapeseed Oil,
 Water,
 Mississippi Conc Muffin Mix - (WHEAT Flour (with Calcium, Iron, Niacin, Thiamin), Modified Starch (E1404, E1422) , Sugar, WHEAT Starch, Vegetable Oil, Raising Agents (Disodium Diphosphate (E450 (i)), Potassium Bicarbonate (E501(ii)), Sodium Bicarbonate (E500 (ii)), Emulsifiers (E471), Propane 1,2 diol esters of fatty acids (E477), Sodium stearoyl-2-lactylate (E481)), Dextrose, Dried Whole EGG, WHEAT Gluten, Xanthan Gum (E415))
 Ginger Crush - (6%) (stem ginger, sucrose, water),
 Ginger - Ground - (<0.5%) SULPHUR DIOXIDE

ALLERGENS

Product Contains:

Celery/Celeriac	No	Mustard	No
Cereals Containing Gluten	Yes	Nuts (Tree)	No
Barley	No	Almond nuts	No
Oats	No	Brazil nuts	No
Rye	No	Cashew nuts	No
Wheat (including Spelt and Khorasan)	Yes	Hazelnuts	No
Crustacea	No	Macadamia (Queensland) nuts	No
Eggs	Yes	Pecan nuts	No
Fish	No	Pistachio nuts	No
Lupin	No	Walnuts	No
Milk	May Contain	Peanuts	No
Molluscs	No	Sesame Seeds	No
		Soybeans	May Contain
		Sulphur Dioxide and Sulphites	Yes

Risk Source:



SUPPLEMENTARY
INGREDIENT
INFORMATION

Palm Oil	Yes
Hydrogenated Vegetable Oil/Fat	No
GM Protein/DNA	No

ADDITIVES

Product Contains:

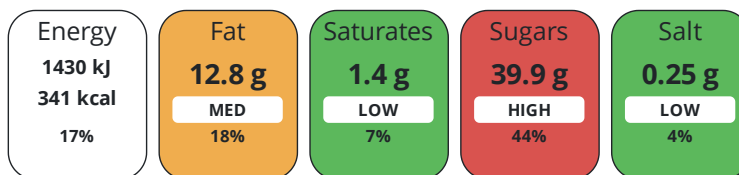
Artificial Antioxidants	No	Artificial Flavourings	No
Artificial Colours	No	Artificial Preservatives	No
Artificial Flavour Enhancers	No	Artificial Sweeteners	No

DIET
SUITABILITY

Vegan Diet	No	Vegetarian Diet	Suitable for
Halal Diet	No	Kosher Diet	No

NUTRITIONAL
INFORMATION

Each 100g/ml portion contains:



of your reference intake.

Typical values per 100g/ml : Energy 341kcal / 1430kJ

Nutrient	per 100g	RI per 100g	per 185g serving	RI per 185g serving
Energy (kJ)	1430 kJ	17%	2645.5 kJ	31%
Energy (kcal)	341 kcal	17%	630.9 kcal	32%
Fat	12.8 g	18%	23.7 g	34%
of which Saturates	1.4 g	7%	2.6 g	13%
Carbohydrate	53.8 g	21%	99.5 g	38%
of which Sugars	39.9 g	44%	73.8 g	82%
Fibre	0.6 g		1.1 g	
Protein	2.8 g	6%	5.2 g	10%
Salt	0.25 g	4%	0.5 g	8%
Serving Size	185 g			

SUPPLEMENTARY
NUTRITIONAL
INFORMATION

HANDLING &
STORAGE
INFORMATION

Directions For Use

From frozen, partially remove film lid and microwave until piping hot.

Storage Instructions

Store frozen at -18°C or below

Shelf Life from Time of Production 720 Days

ACCREDITATIONS/
CERTIFICATIONS/
ASSURANCE
SCHEMES
ORIGIN

BRCGS Certified

Other Accreditation

Product Country of Origin/Place of United Kingdom

Provenance

Additional Origin Details

United Kingdom

PRODUCT CHARACTERISTICS

Standards Testing

Do you undertake trend analysis of microbiological results? No

Is shelf life testing undertaken? No

Microbiological Standards

Organism	Description	Frequency	Target	Maximum	Sample (g or ml)
E. Coli (cfu/g or ml)		Weekly	<20	100	100
Enterobacteriaceae (cfu/g or ml)		Weekly	<100	10000	100
Listeria SPP (cfu/g or ml)		Quarterly	<0	0	100
Staphylococcus Aureus (cfu/g or ml)		Weekly	<20	100	100
Total Viable Count (TVC) (cfu/g or ml)		Weekly	<10000	100000	100
Salmonella (cfu/g or ml)		Quarterly	<0	0	100

CONFIGURATION

Case Configuration

Inner Pack Configuration

Total Quantity of Inner Components in Outer Case 18 Units

Is the Outer Case Splittable? No

PRODUCT WEIGHTS

Inner Component

Variable Weight Consumer Item Yes

Net Drained Weight 0 g

Outer Case

Outer Case Gross Weight 3.33 kg

Outer Case Net Weight 2.22 kg

PRODUCT DIMENSIONS

Inner Component

Inner Component Depth 109 mm

Inner Component Width 109 mm

Inner Component Height 62 mm

Outer Case

Outer Case Depth 345 mm

Outer Case Width 290 mm

Outer Case Height 123 mm

PALLET INFORMATION

Quantity of Cases Per Pallet Layer 10 Cases

Pallet Height 1.4 MTR

Quantity of Layers Per Pallet 11 Layers

Pallet Gross Weight 402 kg

Quantity of Cases Per Pallet 110 Cases

PACKAGING

Inner Component Packaging

Type	Materials	Weight	Recycled Plastic %	Recyclable	Returnable	Composite
Tub	Plastic	10.3 g	- %			

Outer Case Packaging

Type	Materials	Weight	Recycled Plastic %	Recyclable	Returnable	Composite
Case	Paper/Cardboard	138 g	- %			

Transport Packaging

Type	Materials	Weight	Recycled Plastic %	Recyclable	Returnable	Composite
Other	Plastic	500 g	- %		Yes	

OTHER INFORMATION

Intrastat/Taric Code	0
-----------------------------	---

Manufacturer Comments

n/a

CONTACT INFORMATION

Address

Langtons Ltd
 Progress Way, Mid Suffolk Business Park
 Langton Green
 Eye
 Suffolk
 IP23 7HU
 England

P: (Phone) 01379870181

Complaints Contact

Caroline Payne
 Technical/Production Manager
 caroline@langtons.com

P: (Phone) 01379870181

Technical Contact

Caroline Payne
 Technical/Production Manager
 caroline@langtons.com

P: (Phone) 01379870181

Commercial Contact

Justine Jaeger
 Sales & Marketing Representative
 Justine@langtons.com

P: (Phone) 01379870181

The information on the [Erudus System](#) has been supplied by the manufacturers of the products and, whilst the owners of the Erudus System take steps to ensure the information is regularly updated, they give no warranty and no guarantee that the information is accurate. Product information and ingredients may change, please always read product labels carefully in addition to using the information provided by Erudus.

We do not accept liability for any inaccuracies or incorrect information contained on this site. Please visit <http://www.erudus.com/terms-and-conditions> for full terms and conditions.