

Changed May 28, 2024 13:43

Reviewed May 28, 2024 13:43

Erudus ID 7255a9009f8644ba91774921f7bae15c

Version 3.0

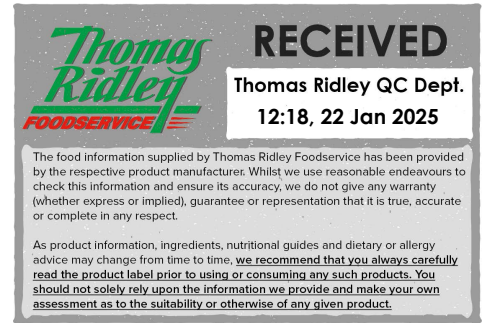
St Pierre 4 Brioche Baguettes Pre-cut x 7

St Pierre 4 Brioche Baguettes Pre-cut X 7

PRODUCT DESCRIPTION

Four large, sub-sized brioche baguettes – each pre-cut at the side for easy filling. With a deliciously soft texture, a gently sweet flavour and a golden finish, these brioche sub rolls are a European staple. Perfectly suited for warm, cold, sweet or savoury fillings, all you have to do is choose your favourite.

| | |
|---------------------------|----------------------------------|
| Brand | St Pierre |
| Manufacturer Product Code | 37937 |
| Product Type | Food |
| Product Category | Croissants, Brioche & Pastries |
| Storage Type | Ambient |
| Erudus ID | 7255a9009f8644ba91774921f7bae15c |
| Specification Type | Bakery Products |



Inner Component GTIN 5027952013228

Outer Case GTIN 05027952013235



INGREDIENTS

Ingredient Declaration

Wheat Flour, Water, Sugar, Egg, Rapeseed Oil, Dried Skimmed Milk, Wheat Gluten, Salt, Invert Sugar Syrup, Yeast, Flavouring, Milk Proteins, Emulsifier (Mono-and Diglycerides of Fatty Acids), Deactivated Yeast, Toasted Malted Rye Flour, Colour (Beta Carotene).

ALLERGENS

Product Contains:

| | | | |
|--------------------------------------|-----|-------------------------------|-------------|
| Celery/Celeryiac | No | Mustard | No |
| Cereals Containing Gluten | Yes | Nuts (Tree) | No |
| Barley | No | Almond nuts | No |
| Oats | No | Brazil nuts | No |
| Rye | Yes | Cashew nuts | No |
| Wheat (including Spelt and Khorasan) | Yes | Hazelnuts | No |
| Crustacea | No | Macadamia (Queensland) nuts | No |
| Eggs | Yes | Pecan nuts | No |
| Fish | No | Pistachio nuts | No |
| Lupin | No | Walnuts | No |
| Milk | Yes | Peanuts | No |
| Molluscs | No | Sesame Seeds | May Contain |
| | | Soybeans | No |
| | | Sulphur Dioxide and Sulphites | No |

Risk Source:

Additional Allergen Information

May contain traces of Sesame Seeds

SUPPLEMENTARY
INGREDIENT
INFORMATION

| | |
|---------------------------------------|----|
| Palm Oil | No |
| Hydrogenated Vegetable Oil/Fat | No |
| GM Protein/DNA | No |

ADDITIVES

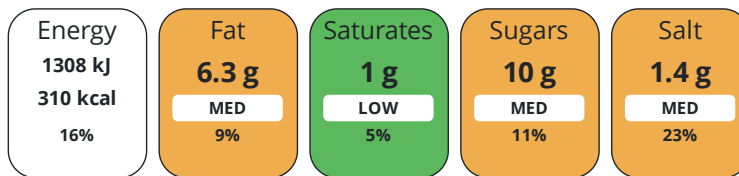
Product Contains:

DIET
SUITABILITY

| | | | |
|-------------------|----|------------------------|--------------|
| Vegan Diet | No | Vegetarian Diet | Suitable for |
| Halal Diet | No | Kosher Diet | No |

NUTRITIONAL
INFORMATION

Each 100g/ml portion contains:



of your reference intake.

Typical values per 100g/ml : Energy 310kcal / 1308kj

| Nutrient | per 100g | RI per 100g | per 85g serving | RI per 85g serving |
|---------------------------|----------|-------------|-----------------|--------------------|
| Energy (kJ) | 1308 kJ | 16% | 1111.8 kJ | 13% |
| Energy (kcal) | 310 kcal | 16% | 263.5 kcal | 13% |
| Fat | 6.3 g | 9% | 5.4 g | 8% |
| of which Saturates | 1 g | 5% | 0.9 g | 5% |
| Carbohydrate | 53 g | 20% | 45.1 g | 17% |
| of which Sugars | 10 g | 11% | 8.5 g | 9% |
| Fibre | 2.4 g | | 2 g | |
| Protein | 9.1 g | 18% | 7.7 g | 15% |
| Salt | 1.4 g | 23% | 1.2 g | 20% |

| | |
|---------------------|------|
| Serving Size | 85 g |
|---------------------|------|

SUPPLEMENTARY
NUTRITIONAL
INFORMATION

HANDLING &
STORAGE
INFORMATION

Directions For Use

How to Enjoy St Pierre Soft Brioche Baguettes work perfectly with all meats, cheeses and seafood. We love prawns with lashings of seafood sauce & rocket leaves or a sausage baguette with caramelised onions! They make the perfect hot sandwich warmed in the oven or in a sandwich press.

Storage Instructions

Store in a cool, dry place. For maximum freshness, reseal bag after each usage or store in an airtight container.

| | |
|---|--------|
| Shelf Life from Time of Production | 1 Days |
|---|--------|

ACCREDITATIONS/
CERTIFICATIONS/
ASSURANCE
SCHEMES
ORIGIN

| | |
|------------------------|--------------------------|
| BRCGS Certified | IFS Food Standard |
|------------------------|--------------------------|

| | |
|---|--------|
| Product Country of Origin/Place of | France |
|---|--------|

Provenance

Standards Testing

PRODUCT
CHARACTERISTICS

| | | | |
|--|-----|--|-----|
| Do you undertake trend analysis of microbiological results? | Yes | Is shelf life testing undertaken? | Yes |
|--|-----|--|-----|

| | | | |
|--------------------|---|----------|----------------------------|
| CONFIGURATION | Case Configuration | | |
| | Total Quantity of Inner Components in Outer Case | 7 Units | |
| | Is the Outer Case Splittable? | No | |
| PRODUCT WEIGHTS | Inner Component | | |
| | Variable Weight Consumer Item | Yes | |
| | Outer Case | | |
| | Outer Case Gross Weight | 2.72 kg | |
| | Outer Case Net Weight | 2.38 kg | |
| PRODUCT DIMENSIONS | Inner Component | | |
| | Inner Component Depth | 250 mm | |
| | Inner Component Width | 120 mm | |
| | Inner Component Height | 90 mm | |
| | Outer Case | | |
| | Outer Case Depth | 600 mm | |
| | Outer Case Width | 400 mm | |
| | Outer Case Height | 108 mm | |
| PALLET INFORMATION | Quantity of Cases Per Pallet Layer | 1 Cases | Pallet Height 0 MTR |
| | Quantity of Layers Per Pallet | 1 Layers | |
| | Quantity of Cases Per Pallet | 1 Cases | |

OTHER INFORMATION

Manufacturer Comments

SP3793701

CONTACT INFORMATION

Address

St Pierre Groupe
Kingston House
Towers Business Park, Wilmslow Road
Manchester
M20 2LX
United Kingdom

P: (Phone) 01619743778

Inner Pack Configuration

Technical Contact

Cathy Kavanagh
Quality & Compliance Manager
cathy.kavanagh@grupobimbo.com

P: (Phone) 0161 946 1355

Commercial Contact

Carima Sherlock
Senior National Account Manager
carima.sherlock@grupobimbo.com

P: (Phone) 07435834817

The information on the [Erudus System](#) has been supplied by the manufacturers of the products and, whilst the owners of the Erudus System take steps to ensure the information is regularly updated, they give no warranty and no guarantee that the information is accurate. Product information and ingredients may change, please always read product labels carefully in addition to using the information provided by Erudus.

We do not accept liability for any inaccuracies or incorrect information contained on this site.
Please visit <http://www.erudus.com/terms-and-conditions> for full terms and conditions.