

Changed Nov 12, 2024 17:10

Reviewed Nov 12, 2024 17:10

Erudus ID 052c33705d5644559f7bd41f4d212340

Version 1.0

STARBURST ORIG 138g

Starburst Orig 138g 12x0.14kg

PRODUCT DESCRIPTION

Chewy /Toffee Candy

Brand	Mars
Manufacturer Product Code	456501
Product Type	Food
Product Category	Confectionery
Storage Type	Ambient
Erudus ID	052c33705d5644559f7bd41f4d212340
Specification Type	Generic
Inner Component GTIN	4009900546249
Outer Case GTIN	4009900546256

INGREDIENTS

Ingredient Declaration

Glucose Syrup, Sugar, Palm Fat, Concentrated Fruit Juices 1.4% (Apple, Orange, Blackcurrant, Strawberry, Lime, Lemon), Acid (Citric Acid), Modified Starch, Acid (Malic Acid), Dextrin, Flavourings, Maltodextrin, Antioxidant (Ascorbic Acid), Emulsifier (Lecithin), Colours (Anthocyanins, Beta-Carotene), Spirulina Extract, Equivalent to 11.5% Fruit Juice

ALLERGENS

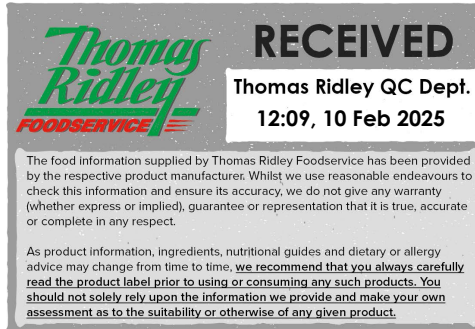
Product Contains:

Celery/Celeriac	No	Mustard	No
Cereals Containing Gluten	No	Nuts (Tree)	No
Barley	No	Almond nuts	No
Oats	No	Brazil nuts	No
Rye	No	Cashew nuts	No
Wheat (including Spelt and Khorasan)	No	Hazelnuts	No
Crustacea	No	Macadamia (Queensland) nuts	No
Eggs	No	Pecan nuts	No
Fish	No	Pistachio nuts	No
Lupin	No	Walnuts	No
Milk	No	Peanuts	No
Molluscs	No	Sesame Seeds	No
		Soybeans	No
		Sulphur Dioxide and Sulphites	No

SUPPLEMENTARY INGREDIENT INFORMATION ADDITIVES

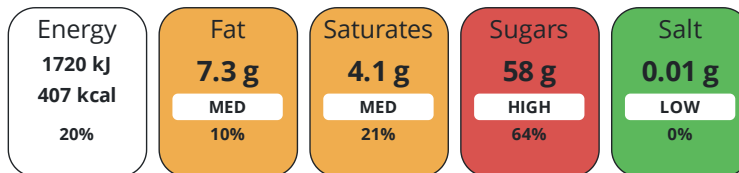
GM Protein/DNA No

Product Contains:



NUTRITIONAL
INFORMATION

Each 100g/ml portion contains:



of your reference intake.

Typical values per 100g/ml : Energy 407kcal / 1720kJ

Nutrient	per 100g	RI per 100g
Energy (kJ)	1720 kJ	20%
Energy (kcal)	407 kcal	20%
Fat	7.3 g	10%
of which Saturates	4.1 g	21%
Carbohydrate	84 g	32%
of which Sugars	58 g	64%
Protein	0 g	0%
Salt	0.01 g	0%

SUPPLEMENTARY
NUTRITIONAL
INFORMATION

HANDLING &
STORAGE
INFORMATION

Directions For Use

Ready to eat

Storage Instructions

Keep cool and dry

Shelf Life from Time of Production 365 Days

ORIGIN

Product Country of Origin/Place of Czech Republic

Provenance

PRODUCT
CHARACTERISTICS
CONFIGURATION

Standards Testing

Case Configuration

Inner Pack Configuration

Total Quantity of Inner Components in 12 Units

Outer Case

PRODUCT
WEIGHTS

Inner Component

Variable Weight Consumer Item No

Inner Component Weight 0.14 kg

Outer Case

Outer Case Gross Weight 2.07 kg

Outer Case Net Weight 1.66 kg

PRODUCT
DIMENSIONS

Inner Component

Inner Component Depth	0 mm
Inner Component Width	0 mm
Inner Component Height	0 mm

Outer Case

Outer Case Depth	470 mm
Outer Case Width	143 mm
Outer Case Height	164 mm

PALLET
INFORMATION

Quantity of Cases Per Pallet Layer	16 Cases	Pallet Height	1.64 MTR
Quantity of Layers Per Pallet	9 Layers	Pallet Gross Weight	331.34 kg
Quantity of Cases Per Pallet	144 Cases		

OTHER
INFORMATION
CONTACT
INFORMATION

Address

Mars
3d Dundee Road
Slough
SL1 4LG
United Kingdom

The information on the [Erudus System](#) has been supplied by the manufacturers of the products and, whilst the owners of the Erudus System take steps to ensure the information is regularly updated, they give no warranty and no guarantee that the information is accurate. Product information and ingredients may change, please always read product labels carefully in addition to using the information provided by Erudus.

We do not accept liability for any inaccuracies or incorrect information contained on this site.
Please visit <http://www.erudus.com/terms-and-conditions> for full terms and conditions.