

CanO Water Sparkling Spring Water 330ml

Cano Water Sparkling Spring Water 330ml

PRODUCT DESCRIPTION

Only 7% of plastic is recycled. The rest will sit on our planet for the next 450 years and ends up in our forests, oceans or even our stomachs. Recycling plastic isn't working. We believe switching to aluminium is the fastest solution to plastic pollution. It's why we put water in a can CanO Water is an infinitely recyclable alternative, with a mission to stop a billion plastic bottles from entering our environment! Our spring is in the Austrian alps – down there they know a thing or two about water thanks to some pretty mineral rich mountains. This means our water has a high pH Level of 7.9 and increased alkaline concentrations – which means it super pure and tastes incredible. Don't Bottle It!

Brand	CanO Drinks Ltd
Manufacturer Product Code	SPRP330
Product Type	Drink
Product Category	Juices and Cordials
Storage Type	Ambient
Erudus ID	7756457d06164566ae94828adf288f7f
Specification Type	Legacy

Inner Component GTIN	0787099226954
Outer Case GTIN	0787099226978

INGREDIENTS

Ingredient Declaration
Natural Spring Water

ALLERGENS

<i>Product Contains:</i>	
Celery/Celeriac	No
Cereals Containing Gluten	No
Barley	No
Oats	No
Rye	No
Wheat (including Spelt and Khorasan)	No
Gluten content <20ppm	Yes
Crustacea	No
Eggs	No
Fish	No
Lupin	No
Milk	No
Molluscs	No
Mustard	No
Nuts (Tree)	No
Almond nuts	No
Brazil nuts	No
Cashew nuts	No
Hazelnuts	No
Macadamia (Queensland) nuts	No
Pecan nuts	No
Pistachio nuts	No
Walnuts	No
Peanuts	No
Sesame Seeds	No
Soybeans	No
Sulphur Dioxide and Sulphites	No

SUPPLEMENTARY INGREDIENT INFORMATION

Palm Oil	No
Hydrogenated Vegetable Oil/Fat	No
GM Protein/DNA	No
Alcoholic Strength %Vol (ABV)	0 % Vol

ADDITIVES

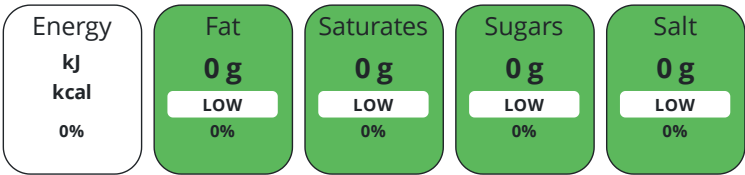
<i>Product Contains:</i>	
Artificial Antioxidants	No
Artificial Colours	No
Artificial Flavour Enhancers	No
Artificial Flavourings	No
Artificial Preservatives	No
Artificial Sweeteners	No

DIET
SUITABILITY

Suitable for Coeliacs	Yes	Halal Diet	No
Kosher Diet	No	Vegetarian Diet	No
Vegan Diet	No		

NUTRITIONAL
INFORMATION

Each 100g/ml portion contains:



of your reference intake.

Typical values per 100g/ml : Energy kcal / kj

Nutrient	per 100g/ml	RI per 100g/ml	per 330g/ml serving	RI per 330g/ml serving
Energy (kj)	0 kj	0%	-	
Energy (kcal)	0 kcal	0%	-	
Fat	0 g	0%	-	
of which Saturates	0 g	0%	-	
of which Mono-unsaturates	0 g		-	
of which Polyunsaturates	0 g		-	
Carbohydrate	0 g	0%	-	
of which Sugars	0 g	0%	-	
of which Polyols	0 g		-	
of which Starch	0 g		-	
Fibre	0 g		-	
Protein	0 g	0%	-	
Salt	0 g	0%	-	
Sodium	0 mg		-	

Serving Size 330 g

VITAMINS AND
MINERALS

Nutrient	per 100g/ml	RI per 100g/ml	per 330g/ml serving	RI per 330g/ml serving
Vitamin A	0 µg	0%	-	
Vitamin C	0 mg	0%	-	
Folate/Folic Acid	0 µg	0%	-	
Calcium	0 mg	0%	-	
Iron	0 mg	0%	-	
Zinc	0 mg	0%	-	

SUPPLEMENTARY
NUTRITIONAL
INFORMATION

Cholesterol per 100 g/ml (UK/FR)	0 g
Trans Fats per 100 g/ml	0 g
Fat Percentage in Dry Matter per 100 g/ml	0 %
Non Milk Extrinsic Sugars per 100 g/ml	0 g

HFSS (HIGH IN
FAT, SALT AND
SUGAR)
HANDLING &
STORAGE
INFORMATION

ACCREDITATIONS/
CERTIFICATIONS/
ASSURANCE
SCHEMES
ORIGIN

PRODUCT
CHARACTERISTICS

HFSS Status	No				
Directions For Use					
Serve Chilled					
Storage Instructions					
Best before: See can base.					
Shelf Life from Time of Production		730 Days			
IFS Food Standard					
Product Country of Origin/Place of Provenance					
Austria					
Standards Testing					
Do you undertake trend analysis of microbiological results?		No	Is shelf life testing undertaken?		No
Microbiological Standards					
Organism	Description	Frequency	Target	Maximum	Sample (g or ml)
Bacillus Cereus (cfu/g or ml)		Every Batch	=0	0	-
Campylobacter (cfu/g or ml)		Every Batch	=0	0	-
Clostridium Botulinum (cfu/g or ml)		Every Batch	=0	0	-
Clostridium Perfringens (cfu/g or ml)		Every Batch	=0	0	-
Coliforms (cfu/g or ml)		Every Batch	=0	0	-
E. Coli (cfu/g or ml)		Every Batch	=0	0	-
Enterobacteriaceae (cfu/g or ml)		Every Batch	=0	0	-
Listeria SPP (cfu/g or ml)		Every Batch	=0	0	-
Listeria Monocytogenes (cfu/g or ml)		Every Batch	=0	0	-
Staphylococcus Aureus (cfu/g or ml)		Every Batch	=0	0	-
Total Viable Count (TVC) (cfu/g or ml)		Every Batch	=0	0	-
Salmonella (cfu/g or ml)		Every Batch	=0	0	-
Yeast (cfu/g or ml)		Every Batch	=0	0	-
Moulds (cfu/g or ml)		Every Batch	=0	0	-
Aerobic Colony Count (ACC) (cfu/g or ml)		Every Batch	=0	0	-
Coagulase-positive Staphylococci (cfu/g or ml)		Every Batch	=0	0	-
Enterobacter Sakazakii (cfu/g or ml)		Every Batch	=0	0	-
Vibrio Species (cfu/g or ml)		Every Batch	=0	0	-
Analytical Standards					
Test	Description	Frequency	Target	Range	Sample (g or ml)
Acidity (%)		Every Batch	=0	0 to 0	-

Test	Description	Frequency	Target	Range	Sample (g or ml)
Added Water (%)		Every Batch	=0	0 to 0	-
Brix (°Bx)		Every Batch	=0	0 to 0	-
Fat Content (%)		Every Batch	=0	0 to 0	-
Fish Content (%)		Every Batch	=0	0 to 0	-
Meat Content (%)		Every Batch	=0	0 to 0	-
Milk Solids (%)		Every Batch	=0	0 to 0	-
Moisture (%)		Every Batch	=0	0 to 0	-
Peroxide Value (PV)		Every Batch	=0	0 to 0	-
pH		Every Batch	=8.1	7.9 to 8.1	-
Salt Content (%)		Every Batch	=0	0 to 0	-
Calorie Content (kcal)		Every Batch	=0	0 to 0	-
Histamine (mg/kg)		Every Batch	=0	0 to 0	-
Mercury Hg (mg/kg)		Every Batch	=0	0 to 0	-
Sugar Content (%)		Every Batch	=0	0 to 0	-

Physical Standards

Test	Description	Frequency	Target	Range	Sample (g or ml)
Chip Length < 25mm (max by weight) (%)		Every Batch	=0	0 to 0	-
Chip Length < 50mm (max by weight) (%)		Every Batch	=0	0 to 0	-
Chip Length < 75mm (max by weight) (%)		Every Batch	=0	0 to 0	-
Colour AGTRON		Every Batch	=0	0 to 0	-
Colour USDA (000)		Every Batch	=0	0 to 0	-
Defects Gross diameter > 12mm pieces per (500g) (pieces per)		Every Batch	=0	0 to 0	-
Defects Gross diameter 6-12mm pieces per (500g) (pieces per)		Every Batch	=0	0 to 0	-
Defects Gross diameter 3-6mm pieces per (500g) (pieces per)		Every Batch	=0	0 to 0	-
Dimensions Diameter (mm)		Every Batch	=0	0 to 0	-
Dimensions Height (mm)		Every Batch	=0	0 to 0	-
Dimensions Length (mm)		Every Batch	=0	0 to 0	-
Dimensions Thickness (mm)		Every Batch	=0	0 to 0	-
Dimensions Width (mm)		Every Batch	=0	0 to 0	-
Glaze Level (%)		Every Batch	=0	0 to 0	-
Slivers (Max) (500g) (pieces per)		Every Batch	=0	0 to 0	-
Weight (g)		Every Batch	=0	0 to 0	-
Collagen to Meat Protein Ratio (%)		Every Batch	=0	0 to 0	-

CONFIGURATION

Case Configuration

Inner Pack Configuration

Total Quantity of Inner Components in 24 Units
Outer Case

PRODUCT WEIGHTS

Inner Component	
Variable Weight Consumer Item	No
Weight/Volume	
330ml	
Outer Case	
Outer Case Gross Weight	8 kg
Outer Case Net Weight	0.2 kg

PRODUCT DIMENSIONS

Inner Component	
Inner Component Depth	0 mm
Inner Component Width	58 mm
Inner Component Height	145 mm
Outer Case	
Outer Case Depth	340 mm
Outer Case Width	210 mm
Outer Case Height	140 mm

PALLET INFORMATION

Quantity of Cases Per Pallet Layer	16 Cases	Pallet Height	1.55 MTR
Quantity of Layers Per Pallet	9 Layers	Pallet Gross Weight	960 kg
Quantity of Cases Per Pallet	108 Cases		

PACKAGING

Inner Component Packaging						
Type	Materials	Weight	Recycled Plastic %	Recyclable	Returnable	Composite
Can	Plastic	4 g	- %			
Can	Aluminium	13 g	- %			
Outer Case Packaging						
Type	Materials	Weight	Recycled Plastic %	Recyclable	Returnable	Composite
Can	Plastic	8 g	- %			
Can	Paper/Cardboard	15 g	- %			
Transport Packaging						
Type	Materials	Weight	Recycled Plastic %	Recyclable	Returnable	Composite
Other	Plastic	100 g	- %			
Other	Wood	10000 g	- %			

OTHER INFORMATION
CONTACT INFORMATION

Address
CanO Drinks Ltd
Unit 418 Centennial Avenue
Centennial Park
Elstree
Herts
WD6 3TN
United Kingdom

P: (Phone) 0203 950 5520

The information on the [Erudus System](#) has been supplied by the manufacturers of the products and, whilst the owners of the Erudus System take steps to ensure the information is regularly updated, they give no warranty and no guarantee that the information is accurate. Product information and ingredients may change, please always read product labels carefully in addition to using the information provided by Erudus.

