

HOUGHTON COOKED SLICED WILTSHIRE HAM 500G

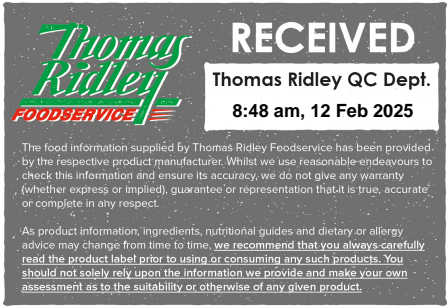
6 X 500g Sliced Wiltshire Ham (Fixed Diameter)



PRODUCT DESCRIPTION

Cooked, cured, boneless pork leg, sliced into gas flushed trays (30% Carbon Dioxide / 70 % Nitrogen).

Brand	Houghton Hams
Manufacturer Product Code	CATER05
Manufacturer Version	2
Number	
Product Type	Food
Product Category	Deli Meats & Processed Meats
Storage Type	Chilled
Erudus ID	de2bd66e10274da29d7f1bd69aa78696
Specification Type	Meat
Inner Pack GTIN	5019432442109
Outer Case GTIN	05019432450715



INGREDIENTS

Ingredient Declaration
Pork Leg, Salt, Demerara Sugar, Antioxidant (Sodium Ascorbate), Preservatives (Sodium Nitrite, Potassium Nitrate).

Ingredient Statements
Made from 100g of pork per 100g of finished product

ALLERGENS

Product Contains:

Celery/Celeriac	No
Cereals Containing Gluten	No
Barley	No
Oats	No
Rye	No
Wheat (including Spelt and Khorasan)	No
Crustacea	No
Eggs	No
Fish	No
Lupin	No
Milk	No
Molluscs	No

Mustard	No
Nuts (Tree)	No
Almond nuts	No
Brazil nuts	No
Cashew nuts	No
Hazelnuts	No
Macadamia (Queensland) nuts	No
Pecan nuts	No
Pistachio nuts	No
Walnuts	No
Peanuts	No
Sesame Seeds	No
Soybeans	No
Sulphur Dioxide and Sulphites	No

SUPPLEMENTARY
INGREDIENT
INFORMATION

Palm Oil	No
Hydrogenated Vegetable Oil/Fat	No
GM Protein/DNA	No

ADDITIVES

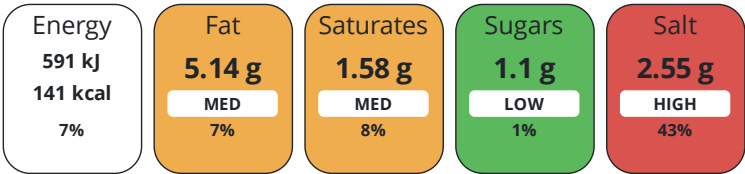
Product Contains:

Artificial Antioxidants	Yes	Artificial Flavourings	No
Artificial Colours	No	Artificial Preservatives	Yes
Artificial Flavour Enhancers	No	Artificial Sweeteners	No
Halal Diet	No	Kosher Diet	No

DIET
SUITABILITY

NUTRITIONAL
INFORMATION

Each 100g/ml portion contains:



of your reference intake.

Typical values per 100g/ml : Energy 141kcal / 591kJ

Nutrient	per 100g	RI per 100g	per 50g serving	RI per 50g serving
Energy (kJ)	591 kJ	7%	295.5 kJ	4%
Energy (kcal)	141 kcal	7%	70.5 kcal	4%
Fat	5.14 g	7%	2.6 g	4%
of which Saturates	1.58 g	8%	0.8 g	4%
Carbohydrate	1.1 g	0%	0.6 g	0%
of which Sugars	1.1 g	1%	0.6 g	1%
Fibre	< 0.5 g		0.3 g	
Protein	22.5 g	45%	11.3 g	23%
Salt	2.55 g	43%	1.3 g	22%

Serving Size	50 g
--------------	------

Source of Nutritional Information	Manufacturers analysis
-----------------------------------	------------------------

SUPPLEMENTARY
NUTRITIONAL
INFORMATION

HANDLING &
STORAGE
INFORMATION

Directions For Use

Ready to Eat

Storage Instructions

Keep refrigerated (2-5 °C)

Storage Instructions After Opening

Keep refrigerated (2-5 °C)

Shelf Life from Time of Production	21 Days
------------------------------------	---------

Shelf Life From Opening	2 Days
-------------------------	--------

ACCREDITATIONS/
CERTIFICATIONS/
ASSURANCE
SCHEMES
ORIGIN

BRCGS Certified	
Organic	

BRCGS Food Safety

Product Country of Origin/Place of Provenance	Spain
---	-------

PRODUCT
CHARACTERISTICS

Standards Testing	
Do you undertake trend analysis of microbiological results?	Yes

Is shelf life testing undertaken?	Yes
-----------------------------------	-----

	Microbiological Standards					
	Organism	Description	Frequency	Target	Maximum	Sample (g or ml)
	Clostridium Perfringens (cfu/g or ml)		Monthly	<10	100	100
	E. Coli (cfu/g or ml)		Monthly	<10	10	100
	Enterobacteriaceae (cfu/g or ml)		Monthly	<100	1000	100
	Salmonella (cfu/g or ml)		Monthly	=0	0	25
	Aerobic Colony Count (ACC) (cfu/g or ml)		Monthly	<1000	10000	100
	Coagulase-positive Staphylococci (cfu/g or ml)		Monthly	<20	100	100
	Listeria Monocytogenes (cfu/g or ml)		Monthly	=0	0	25
	Listeria SPP (cfu/g or ml)		Monthly	=0	19	25
	SUPPLEMENTARY INFORMATION					
	Desinewed Meat	No	Reformed		No	
	Skeletal Bones	No	Fried During Manufacture		No	
	Skin	No				
	ORGANOLEPTICS					
	Appearance					
	Fully cured, cooked ham with the characteristic pink colour, packed into a gas flushed PET/PE black tray and clear film, labelled and free from any contamination, blowing or other evidence of damage.					
	Aroma					
	Pleasant, typical of a cooked ham. No off odours.					
	Taste					
	Pleasant, typical of a cooked ham, free from off flavours or taints.					
	Texture					
	Firm but tender with no excessive chewiness or gristles					
	HAZARD CONTROLS					
	Metal Detection	Yes				
	Case Configuration	Inner Pack Configuration				
CONFIGURATION	Total Quantity of Inner Components in Outer Case	6 Units	Is Inner Pack Splittable?		No	
	Total Quantity of Inner Packs in Outer Case	6 Units	Quantity of Inner Components in Inner Pack		1	
	Is the Outer Case Splittable?	Yes				
	Inner Component	Inner Pack				
PRODUCT WEIGHTS	Variable Weight Consumer Item	Yes	Inner Pack Gross Weight		524 g	
	Inner Component Weight	500 g	Inner Pack Net Weight		500 g	
	e mark	Yes				
	Outer Case					
	Outer Case Gross Weight	3.1 kg				
	Outer Case Net Weight	3 kg				

PRODUCT
DIMENSIONS

Inner Component		Inner Pack	
Inner Component Depth	240 mm	Inner Pack Depth	240 mm
Inner Component Width	190 mm	Inner Pack Width	190 mm
Inner Component Height	30 mm	Inner Pack Height	30 mm
Outer Case			
Outer Case Depth	490 mm		
Outer Case Width	395 mm		
Outer Case Height	168 mm		

PALLET
INFORMATION

Quantity of Cases Per Pallet Layer	24 Cases	Pallet Type	UK Standard Pallet
Quantity of Layers Per Pallet	7 Layers	Pallet Height	1.5 MTR
Quantity of Cases Per Pallet	168 Cases	Pallet Gross Weight	604.8 kg

PACKAGING

Inner Component Packaging						
Type	Materials	Weight	Recycled Plastic %	Recyclable	Returnable	Composite
Film	Plastic	24 g	- %			
Outer Case Packaging						
Type	Materials	Weight	Recycled Plastic %	Recyclable	Returnable	Composite
Case	Paper/Cardboard	100 g	- %			
Transport Packaging						
Type	Materials	Weight	Recycled Plastic %	Recyclable	Returnable	Composite
Other	Plastic	300 g	- %			
Other	Paper/Cardboard	1000 g	- %			
Other	Wood	13000 g	- %			

OTHER
INFORMATION

Identification/Health Marks	United Kingdom NM005
-----------------------------	-------------------------

CONTACT
INFORMATION

Manufacturer Comments

None

Address

Houghton Hams
Unit 58-68, Tenter Road
Moulton Park Industrial Estate
Northampton
NN3 6AX
England

P: (Phone) 01604644247

The information on the [Erudus System](#) has been supplied by the manufacturers of the products and, whilst the owners of the Erudus System take steps to ensure the information is regularly updated, they give no warranty and no guarantee that the information is accurate. Product information and ingredients may change, please always read product labels carefully in addition to using the information provided by Erudus.

We do not accept liability for any inaccuracies or incorrect information contained on this site.
Please visit <http://www.erudus.com/terms-and-conditions> for full terms and conditions.