

Changed Aug 24, 2023 08:35

Erudus ID 163bccdd9b8b14abdaf55da726a54a5e3

Version 1.0

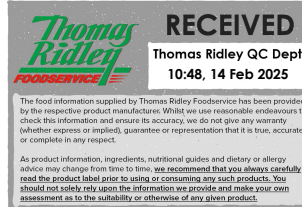
Maoam Pinballs 14x140g

Maoam Pinballs 14x140g

PRODUCT DESCRIPTION

Fruit Flavour and Cola Flavour Chewy Sweets

Brand	Haribo
Manufacturer Product Code	540140
Product Type	Food
Product Category	Confectionery
Storage Type	Ambient
Erudus ID	163bccdd9b8b14abdaf55da726a54a5e3
Specification Type	Legacy
Inner Component GTIN	5012035952273
Outer Case GTIN	05012035969639



INGREDIENTS

Ingredient Declaration

Sugar, glucose syrup, palm fat, humectant (sorbitol syrup), acid (citric acid), gelatine, fruit and plant concentrates (safflower, radish, carrot, spirulina, apple, lemon, blackcurrant), flavouring, caramelised sugar syrup, sunflower oil, liquorice extract, glazing agent (white and yellow beeswax), anti-caking agent (talc), treacle.

ALLERGENS

Product Contains:

Celery/Celeriac	No	Mustard	No
Cereals Containing Gluten	No	Nuts (Tree)	No
Barley	No	Almond nuts	No
Oats	No	Brazil nuts	No
Rye	No	Cashew nuts	No
Wheat (including Spelt and Khorasan)	No	Hazelnuts	No
Gluten content <20ppm	Yes	Macadamia (Queensland) nuts	No
Crustacea	No	Pecan nuts	No
Eggs	No	Pistachio nuts	No
Fish	No	Walnuts	No
Lupin	No	Peanuts	No
Milk	No	Sesame Seeds	No
Molluscs	No	Soybeans	No
		Sulphur Dioxide and Sulphites	No

SUPPLEMENTARY INGREDIENT INFORMATION

Palm Oil	Yes
Hydrogenated Vegetable Oil/Fat	No
GM Protein/DNA	No

ADDITIVES

Product Contains:

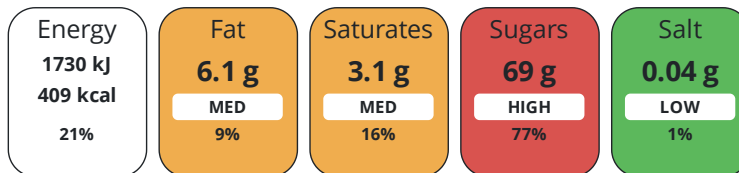
Artificial Antioxidants	No	Artificial Flavourings	Yes
Artificial Colours	No	Artificial Preservatives	No
Artificial Flavour Enhancers	No	Artificial Sweeteners	No

DIET SUITABILITY

Suitable for Coeliacs	Yes	Halal Diet	No
Kosher Diet	No	Vegetarian Diet	No
Vegan Diet	No		

NUTRITIONAL INFORMATION

Each 100g/ml portion contains:



of your reference intake.

Typical values per 100g/ml : Energy 409kcal / 1730kJ

Nutrient	per 100g/ml	RI per 100g/ml	per 25g/ml serving	RI per 25g/ml serving
Energy (kJ)	1730 kJ	21%	432.5 kJ	5%
Energy (kcal)	409 kcal	20%	102.3 kcal	5%
Fat	6.1 g	9%	1.5 g	2%
of which Saturates	3.1 g	16%	0.8 g	4%
Carbohydrate	87 g	33%	21.8 g	8%
of which Sugars	69 g	77%	17.3 g	19%
Protein	0.9 g	2%	0.2 g	0%
Salt	0.04 g	1%	-	
Serving Size	25 g			

SUPPLEMENTARY NUTRITIONAL INFORMATION

HFSS (HIGH IN FAT, SALT AND SUGAR) HANDLING & STORAGE INFORMATION

HFSS Status	Yes
Directions For Use	Ready to eat
Storage Instructions	Store away from heat and humidity
Shelf Life from Time of Production	450 Days

ACCREDITATIONS/ CERTIFICATIONS/ ASSURANCE SCHEMES ORIGIN

FSSC 22000	
Product Country of Origin/Place of Provenance	Germany

PRODUCT CHARACTERISTICS

Standards Testing			
Do you undertake trend analysis of microbiological results?	No	Is shelf life testing undertaken?	No

CONFIGURATION

Case Configuration	Inner Pack Configuration
Total Quantity of Inner Components in Outer Case	14 Units

PRODUCT WEIGHTS

Inner Component	
Variable Weight Consumer Item	No
Inner Component Weight	140 g
Outer Case	
Outer Case Gross Weight	2.15 kg
Outer Case Net Weight	1.96 kg

PRODUCT DIMENSIONS

Inner Component	
Inner Component Depth	180 mm
Inner Component Width	145 mm
Inner Component Height	180 mm
Outer Case	
Outer Case Depth	296 mm
Outer Case Width	200 mm
Outer Case Height	134 mm

PALLET INFORMATION

Quantity of Cases Per Pallet Layer	20 Cases	Pallet Height	1.5 MTR
Quantity of Layers Per Pallet	10 Layers	Pallet Gross Weight	457.5 kg
Quantity of Cases Per Pallet	200 Cases		

PACKAGING

Inner Component Packaging						
Type	Materials	Weight	Recycled Plastic %	Recyclable	Returnable	Composite
Film	Plastic	3 g	- %			
Outer Case Packaging						
Type	Materials	Weight	Recycled Plastic %	Recyclable	Returnable	Composite
Case	Paper/Cardboard	137 g	- %			
Transport Packaging						
Type	Materials	Weight	Recycled Plastic %	Recyclable	Returnable	Composite
Other	Wood	28000 g	- %			

OTHER INFORMATION

Intrastat/Taric Code	7013
Commodity Code	1704906100

CONTACT INFORMATION

Address	Technical Contact
Haribo	Julie Baker
26 Front Street	Technical Services Manager
Pontefract	Julie.Baker@haribo.com
West Yorkshire	
WF8 1NJ	P: (Phone) 01924 890777
England	
Complaints Contact	Commercial Contact
Jimmy Jackson	Helen Hulme
Channel Controller	Booker National Account Manager
jimmy.jackson@haribo.com	helen.hulme@haribo.com
P: (Phone) 01924 890777	P: (Phone) +44 (0)1977 600266 Mobile:07957 436568

The information on the [Erudus System](#) has been supplied by the manufacturers of the products and, whilst the owners of the Erudus System take steps to ensure the information is regularly updated, they give no warranty and no guarantee that the information is accurate. Product information and ingredients may change, please always read product labels carefully in addition to using the information provided by Erudus.

We do not accept liability for any inaccuracies or incorrect information contained on this site.
Please visit <http://www.erudus.com/terms-and-conditions> for full terms and conditions.