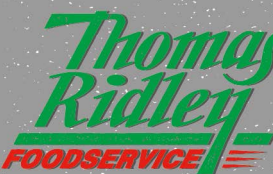


Munchies 104g



EAN
7613036241755
2886555

Target market(s)
GB, IE



RECEIVED

Thomas Ridley QC Dept.
11:08, 19 Feb 2025

The food information supplied by Thomas Ridley Foodservice has been provided by the respective product manufacturer. Whilst we use reasonable endeavours to check this information and ensure its accuracy, we do not give any warranty (whether express or implied), guarantee or representation that it is true, accurate or complete in any respect.

As product information, ingredients, nutritional guides and dietary or allergy advice may change from time to time, **we recommend that you always carefully read the product label prior to using or consuming any such products. You should not solely rely upon the information we provide and make your own assessment as to the suitability or otherwise of any given product.**

Components

Ingredients

- Sugar
- Glucose Syrup
- Cocoa Butter
- Vegetable Fats (Palm, Palm Kernel, Shea/ Illipe/ Mango Kernel/ Kokum Gurgi/ Sal)
- Invert Sugar Syrup
- Milk Powders (Whole and Skimmed)
- Sweetened Condensed Skimmed Milk (Milk, Sugar)
- Cocoa Mass
- Lactose and Proteins from Whey (from Milk)
- Whey Powder (from Milk)
- Wheat Flour (contains Calcium, Iron, Thiamin and Niacin)
- Butterfat (from Milk)
- Emulsifier (Lecithins)
- Barley Malt Extract
- Raising Agents (Sodium Bicarbonate, Ammonium Bicarbonate)
- Salt

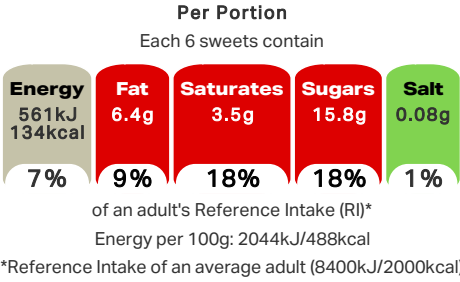
Nutrition

	Per 100g	Per 6 sweets	Reference Intake*	% RI*
Energy	2044kJ	561kJ	8400kJ	
	488kcal	134kcal	2000kcal	7%
Fat	23.3g	6.4g	70g	9%
of which: saturates	12.8g	3.5g	20g	18%
Carbohydrate	64.9g	17.8g	260g	7%
of which: sugars	57.6g	15.8g	90g	18%
Fibre	1.1g	0.3g	-	-
Protein	4.1g	1.1g	50g	2%
Salt	0.30g	0.08g	6g	1%
*Reference Intake of an average adult (8400kJ/2000kcal)				
Contains approximately 4 servings				
Portions should be adjusted for children of different ages				

Calculated Nutrition

	per 100g	Per 6 sweets
Energy (kJ)	2044	561
Energy (kcal)	488	134
Fat (g)	23.3	6.4
of which saturates (g)	12.8	3.5
Carbohydrate (g)	64.9	17.8
of which sugars (g)	57.6	15.8
Fibre (g)	1.1	0.3
Protein (g)	4.1	1.1
Salt (g)	0.3	0.08

Front of Pack Nutrition



Nutrition Other Text

Reference Intake of an average adult (8400kJ/2000kcal)
Contains approximately 4 servings
Portions should be adjusted for children of different ages

Reference Intake Statement

Reference Intake Statement - Reference Intake of an average adult (8400kJ/2000kcal)

Product Description

Alternative Description

Supplier Preferred Product Name - Munchies Milk Chocolate & Caramel Sharing Bag 104g

Brand

Munchies

Manufacturer Brand

Brand - Nestlé

Features

Creamy milk chocolate cubes encasing a soft caramel & crunchy biscuit centre
No artificial colours, flavours & preservatives
Perfect for sharing with family and friends.
Rainforest Alliance Certified cocoa

Standardised Brand

Brand - Munchies

Regulated Product Name

Milk chocolates with soft caramel (30%) and a crisp biscuit centre (5%).

Marketing

Company Name

Nestlé UK & Ireland

Company Address

PO Box 203,
York,
YO91 1XY.

Nestlé Ireland,
3030 Lake Drive,
Citywest Business Campus,
Dublin 24.

Third Party Logos

- Rainforest Alliance
- Terracycle
- Tidyman

Product Marketing

MUNCHIES® sharing bag, delicious milk chocolate cubes encasing a soft caramel & crunchy biscuit centre - making them the ideal treat to share with family and friends.

Over the years there have been a number of different flavour variants launched under the MUNCHIES® brand including Chocolate Orange in 1977 and Banoffee in 1996. However, the original has remain consistently the favourite flavour within the range.

Brand Marketing

For more to share, why not try the MUNCHIES® 194g More to Share Bag.

Other Information

Rainforest Alliance - People & Nature
Rainforest Alliance Certified cocoa - Working with the Rainforest Alliance to support cocoa farmers and their communities.
Find out more at ra.org

© Reg. Trademark of Société des Produits Nestlé S.A.
Nutritional Compass ®

Further Description

Learn more: <http://www.nestle.co.uk/brands>

Good to remember: Enjoying chocolate as part of a varied, balanced diet and a healthy lifestyle, is one of life's little pleasures.

Cocoa Plan:
Supporting farmers for better chocolate. Working with the Rainforest Alliance to support cocoa farmers. Find out more at www.nestlecocoaplan.com.

Health & Lifestyle

Allergy Advice

Barley - Contains
Milk - Contains
Wheat - Contains

Additives

Artificial Colours - Free From
Artificial Flavours - Free From
Artificial Preservatives - Free From

Storage & Usage

Storage Type

Type
Ambient

Preparation and Usage

Know Your Servings
6 Sweets = 1 Serving

Love to Share
...With others
...With a movie
...As a treat

Storage

For best before end see base.
Store cool and dry.

Lower Age Limit

Advisory - Years

4

Brandbank Captured Pack Data

Pack Size

104g e

Numeric Size

Numeric Size - 104

Recycling Info

Whole Packaging - Do Not Recycle

Pack Type

Type - Pouch

Recycling Scheme

- OPRL

Recycling Other Text

Terracycle - Not recycled by most councils. Find out how you can still recycle at www.terracycle.com/en-GB

Usage Count

Number of uses - Servings

4

Usage Other Text

Contains approximately 4 servings

Customer Services

Manufacturers Address

PO Box 203,
York,
YO91 1XY.

Nestlé Ireland,
3030 Lake Drive,
Citywest Business Campus,
Dublin 24.

Return To

Contact us Free
www.nestle.co.uk
UK: 0800 604 604
PO Box 203,
York,
YO91 1XY.

ROI: 00800 6378 5385
Nestlé Ireland,
3030 Lake Drive,
Citywest Business Campus,
Dublin 24.

Telephone Helpline

UK: 0800 604 604
ROI: 00800 6378 5385

Web Address

www.nestle.co.uk

Social Media

Twitter, Instagram /munchiesuki

Extended Data

Safety Warning

Important: Young children (less than 4 years) have limited chewing ability and could choke on small sweets.

