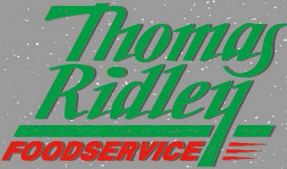


## Smarties 105g



**EAN**  
7613039535042  
4270363

**Target market(s)**  
GB, IE



**RECEIVED**  
Thomas Ridley QC Dept.  
11:18, 19 Feb 2025

The food information supplied by Thomas Ridley Foodservice has been provided by the respective product manufacturer. Whilst we use reasonable endeavours to check this information and ensure its accuracy, we do not give any warranty (whether express or implied), guarantee or representation that it is true, accurate or complete in any respect.

As product information, ingredients, nutritional guides and dietary or allergy advice may change from time to time, we recommend that you always carefully read the product label prior to using or consuming any such products. You should not solely rely upon the information we provide and make your own assessment as to the suitability or otherwise of any given product.

### Components

**Ingredients**

- Sugar
- Skimmed **MILK** Powder
- Cocoa Mass
- Cocoa Butter
- Glucose Syrup
- WHEAT** Flour
- Whey Powder Product (**MILK**)
- Butterfat (**MILK**)
- Vegetable Fats (Palm, Shea)
- Starch
- Emulsifier (Lecithins)
- Colours (Beetroot Red, Carotenes, Curcumin)
- Flavourings
- Spirulina Concentrate
- Glazing Agents (Carnauba Wax, Beeswax White)
- Vegetable Concentrates (Safflower, Radish)

**BARLEY** Malt Extract

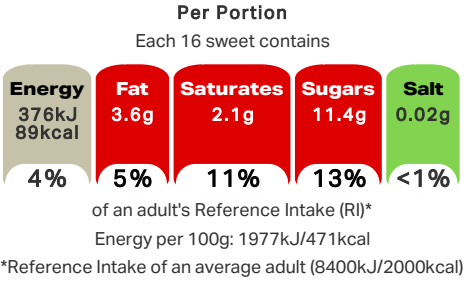
**Nutrition**

	Per 100 g	Per 16 sweets	%RI*
Energy	1977 kJ / 471 kcal	376 kJ / 89 kcal	4%
Fat	18.7 g	3.6 g	5%
of which: saturates	11.3 g	2.1 g	11%
Carbohydrate	69.0 g	13.1 g	5%
of which: sugars	60.1 g	11.4 g	13%
Fibre	1.9 g	0.4 g	
Protein	5.4 g	1.0 g	2%
Salt	0.13 g	0.02 g	<1%
*Reference Intake of an average adult (8400kJ/2000kcal)			
Contains approximately 5 servings			
Portions should be adjusted for children of different ages			

Calculated Nutrition

	per 100g	Per 16 sweets
Energy (kJ)	1977	376
Energy (kcal)	471	89
Fat (g)	18.7	3.6
of which saturates (g)	11.3	2.1
Carbohydrate (g)	69	13.1
of which sugars (g)	60.1	11.4
Fibre (g)	1.9	0.4
Protein (g)	5.4	1
Salt (g)	0.13	0.02

Front of Pack Nutrition



Nutrition Other Text

Contains approximately 5 servings  
Portions should be adjusted for children of different ages

Reference Intake Statement

Reference Intake Statement - Reference Intake of an average adult (8400kJ/2000kcal)

Product Description

Alternative Description

Supplier Preferred Product Name - Smarties Milk Chocolate Sharing Bag 105g

Brand

Smarties

Manufacturer Brand

Brand - Nestle

Features

Wrapped in recyclable paper packaging! Once you have enjoyed Smarties®, dispose of the paper wrapper in your paper recycling bin.  
Smooth milk chocolate covered in colourful crisp sugar shells - which colour are you?  
Includes orange Smarties®, made using natural orange oil  
Coloured using food & plant extracts - no artificial flavours, colours or preservatives  
Quality, 100% certified sustainable cocoa beans selected through the Nestlé® Cocoa Plan®

Standardised Brand

Brand - Smarties

Regulated Product Name

Milk chocolate (65%) in a crisp sugar shell. Milk chocolate contains vegetable fats in addition to cocoa butter.

## Marketing

### Company Name

Nestlé UK / Nestlé Ireland

### Company Address

Nestlé UK,  
PO Box 203,  
York,  
YO91 1XY.

Nestlé Ireland,  
3030 Lake Drive,  
Citywest Business Campus,  
Dublin 24.

### Third Party Logos

- Mobius Loop
- Rainforest Alliance

### Product Marketing

Bring some Smarties® fun into your life! Yummy smooth milk chocolate covered in colourful crisp sugar shells. Nestlé® Smarties® Sharing Bag contains red, yellow, green, blue, violet, pink, brown and orange Smarties® - what's your favourite? Release the colourful fun of Smarties®.

Deliciously smooth milk chocolate has been at the heart of Smarties® for more than 80 years and, in 2005, Smarties® were the first UK major confectionery brand to move to no artificial colours - more reasons to enjoy Smarties®. We select only quality, 100% certified sustainable cocoa beans through the Nestlé® Cocoa Plan®, which aims to improve the lives of cocoa farming communities and the quality of their products. Enjoy Smarties® as part of a varied, balanced diet and a healthy lifestyle.

Let's be recycling heroes! Once you have enjoyed Smarties®, dispose of the paper wrapper in your paper recycling bin.

### Brand Marketing

Have you tried our Smarties® tubes, filled with everyone's favourite colour Smarties®. And, if you love Smarties® chocolate, then get ready to experience chocolate heaven with Smarties® Sharing Buttons - yummy smooth milk chocolate Smarties® covered in more milk chocolate!

### Other Information

Rainforest Alliance People & Nature - Cocoa

© Reg. Trademark of Société des Produits Nestlé S.A.

### Further Description

Smart initiatives a colourful world for our children!  
[www.smarties.co.uk/smart-initiatives](http://www.smarties.co.uk/smart-initiatives)

Nestle Cocoa Plan  
[www.nestlecocoaplan.com](http://www.nestlecocoaplan.com)

Rainforest alliance certified cocoa. Find out more at [ra.org](http://ra.org)

## Health & Lifestyle

### Allergy Advice

Barley - Contains  
Milk - Contains  
Wheat - Contains

### Additives

Artificial Colours - Free From  
Artificial Flavours - Free From  
Artificial Preservatives - Free From

Storage & Usage

Storage Type

Type
Ambient

Preparation and Usage

Know your serving16 Sweets = 1 Serving

Storage

Store cool and dry.

Date Marking Type

- Best Before

Lower Age Limit

Advisory - Years

4

Brandbank Captured Pack Data

Pack Size

105g e

Numeric Size

Numeric Size - 105

Recycling Info

Whole Packaging - Recycle

Pack Type

Type - Box

Recycling Scheme

- OPRL

Recycling Other Text

I'm Paper Be Smart Recycle Me!  
Let's Be Recycling Heroes!  
Dispose of Responsibly

Usage Count

Number of uses - Servings

5

Usage Other Text

Contains approximately 5 servings

## Customer Services

### Manufacturers Address

Nestlé UK,  
PO Box 203,  
York,  
YO91 1XY.

Nestlé Ireland,  
3030 Lake Drive,  
Citywest Business Campus,  
Dublin 24.

### Return To

Contact Us Free  
[www.nestle.co.uk](http://www.nestle.co.uk)  
UK: 0800 604 604,  
Nestlé UK,  
PO Box 203,  
York,  
YO91 1XY.

ROI: 00800 6378 5385,  
Nestlé Ireland,  
3030 Lake Drive,  
Citywest Business Campus,  
Dublin 24.

### Telephone Helpline

UK: 0800 604 604  
ROI: 00800 6378 5385

### Web Address

[www.nestle.co.uk](http://www.nestle.co.uk)

## Extended Data

### Safety Warning

IMPORTANT: YOUNG CHILDREN (LESS THAN 4 YEARS) HAVE LIMITED CHEWING ABILITY AND COULD CHOKe ON SMALL SWEETS.





