

Changed Dec 20, 2024 13:01

Reviewed Dec 20, 2024 13:01

Erudus ID d19010edba074ffe8a3d5f6e8f1ce457

Version 3.0

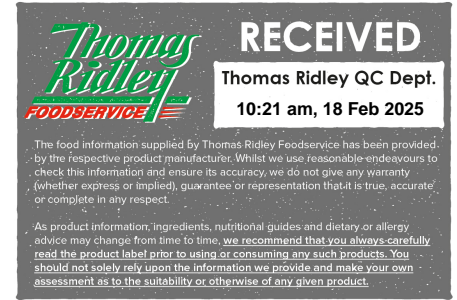
# Battered Chicken Nuggets 20g (British Red Tractor)

Battered Chicken Nuggets 20g 5x1000g

## PRODUCT DESCRIPTION

Chopped and shaped British chicken breast meat with added water in a crispy batter coating, flash fried. Please note that if we do not receive a response or feedback regarding this specification within 10 days from the date of receipt, the specification will be considered approved.

Brand	The UK Foodhall Ltd
Manufacturer Product Code	CH025
Product Type	Food
Product Category	Chicken & Turkey
Storage Type	Frozen
Erudus ID	d19010edba074ffe8a3d5f6e8f1ce457
Specification Type	Meat
Outer Case GTIN	5060329042926



## INGREDIENTS

### Ingredient Declaration

50% British Chicken Breast, Water, **WHEAT** Flour (**WHEAT** Flour, Calcium Carbonate, Iron, Niacin, Thiamin), Semolina (**WHEAT**), Maize Flour, Salt, **WHEAT** Starch, White Pepper, Maize Starch, Yeast Extract, **CELERY** Powder, Raising Agents: Disodium Diphosphate, Sodium Bicarbonate; Rapeseed Oil, Dextrose.

## ALLERGENS

Product Contains:

<b>Celery/Celeriac</b>	Yes	<b>Mustard</b>	No
<b>Cereals Containing Gluten</b>	Yes	<b>Nuts (Tree)</b>	No
<b>Barley</b>	No	<b>Almond nuts</b>	No
<b>Oats</b>	No	<b>Brazil nuts</b>	No
<b>Rye</b>	No	<b>Cashew nuts</b>	No
<b>Wheat (including Spelt and Khorasan)</b>	Yes	<b>Hazelnuts</b>	No
<b>Crustacea</b>	No	<b>Macadamia (Queensland) nuts</b>	No
<b>Eggs</b>	No	<b>Pecan nuts</b>	No
<b>Fish</b>	No	<b>Pistachio nuts</b>	No
<b>Lupin</b>	No	<b>Walnuts</b>	No
<b>Milk</b>	No	<b>Peanuts</b>	No
<b>Molluscs</b>	No	<b>Sesame Seeds</b>	No
		<b>Soybeans</b>	No
		<b>Sulphur Dioxide and Sulphites</b>	No

### Allergen Statement On Pack

For allergens, including Cereals containing Gluten, see ingredients in Bold.

### Additional Allergen Information

Contains Celery and Wheat

SUPPLEMENTARY  
INGREDIENT  
INFORMATION

<b>Palm Oil</b>	No
<b>Hydrogenated Vegetable Oil/Fat</b>	No
<b>GM Protein/DNA</b>	No

ADDITIVES

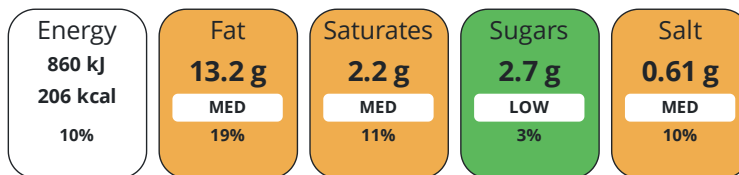
Product Contains:

<b>Artificial Antioxidants</b>	No	<b>Artificial Flavourings</b>	No
<b>Artificial Colours</b>	No	<b>Artificial Preservatives</b>	No
<b>Artificial Flavour Enhancers</b>	No	<b>Artificial Sweeteners</b>	No
<b>Halal Diet</b>	No	<b>Kosher Diet</b>	No

DIET  
SUITABILITY

NUTRITIONAL  
INFORMATION

Each 100g/ml portion contains:



of your reference intake.

Typical values per 100g/ml : Energy 206kcal / 860kj

Nutrient	per 100g	RI per 100g
<b>Energy (kJ)</b>	860 kJ	10%
<b>Energy (kcal)</b>	206 kcal	10%
<b>Fat</b>	13.2 g	19%
of which Saturates	2.2 g	11%
<b>Carbohydrate</b>	7.7 g	3%
of which Sugars	2.7 g	3%
<b>Fibre</b>	1.3 g	
<b>Protein</b>	13.6 g	27%
<b>Salt</b>	0.61 g	10%
<b>Sodium</b>	242 mg	

SUPPLEMENTARY  
NUTRITIONAL  
INFORMATION

HANDLING &  
STORAGE  
INFORMATION

**Directions For Use**

Some appliances may vary. Remove all packaging Before cooking. Fryer: Pre Heat Oil Until 180°C. Place products from frozen. Fry for about 4-5 minutes Oven: Pre Heat Oven Until 200°C. Place Products from frozen on a tray and cook for 18-20 minutes Ensure food is piping hot throughout. Do not reheat. Not suitable for microwave cooking

**Storage Instructions**

Please keep frozen. Cook from frozen.

**Shelf Life from Time of Production** 547 Days

ACCREDITATIONS/  
CERTIFICATIONS/  
ASSURANCE  
SCHEMES  
ORIGIN

**BRCGS Certified** **Red Tractor**

**Product Country of Origin/Place of** United Kingdom

**Provenance**

**Additional Origin Details**

Packed and Produced in the UK. Made with British Red Tractor Assured Chicken.

PRODUCT CHARACTERISTICS CONFIGURATION

Standards Testing

Case Configuration

Inner Pack Configuration

**Total Quantity of Inner Components in Outer Case** 5 Units

**Count per Inner Component** 50

**Is the Outer Case Splittable?** No

PRODUCT WEIGHTS

Inner Component

**Variable Weight Consumer Item** No

**Inner Component Weight** 1000 g

Outer Case

**Outer Case Gross Weight** 5.3 kg

**Outer Case Net Weight** 5 kg

PRODUCT DIMENSIONS

Inner Component

**Inner Component Depth** 0 mm

**Inner Component Width** 615 mm

**Inner Component Height** 0 mm

Outer Case

**Outer Case Depth** 370 mm

**Outer Case Width** 270 mm

**Outer Case Height** 190 mm

PALLET INFORMATION

**Quantity of Cases Per Pallet Layer** 10 Cases

**Pallet Height** 1.76 MTR

**Quantity of Layers Per Pallet** 8 Layers

**Pallet Gross Weight** 422 kg

**Quantity of Cases Per Pallet** 80 Cases

PACKAGING

Inner Component Packaging

Type	Materials	Weight	Recycled Plastic %	Recyclable	Returnable	Composite
Heat Sealed	Plastic	10.5 g	0.00 %			

Outer Case Packaging

Type	Materials	Weight	Recycled Plastic %	Recyclable	Returnable	Composite
Case	Paper/Cardboard	320 g	- %			
Tape	Plastic	4 g	- %			
Label	Paper/Cardboard	2 g	- %			

Transport Packaging

Type	Materials	Weight	Recycled Plastic %	Recyclable	Returnable	Composite
Pallet Wrap	Plastic	150 g	0.00 %			
Pallet	Wood	28000 g	- %			

OTHER INFORMATION

**Identification/Health Marks** GB WN084

CONTACT  
INFORMATION

Address

The UK Foodhall Ltd  
2 Darwin Court  
Oxon Business Park  
Shrewsbury  
Shropshire  
SY3 5AL  
England

P: (Phone) 0845 3011182

Complaints Contact

wemayhaveaproblem@karenmcquade.com

P: (Phone) 0345-3011182

Technical Contact

Nicola Frankham  
Technical Manager  
technical@karenmcquade.com

P: (Phone) 0345-3011182

Commercial Contact

Shaun Mancrief  
Commercial Director  
supplychain@karenmcquade.com

P: (Phone) 03453011182

The information on the [Erudus System](#) has been supplied by the manufacturers of the products and, whilst the owners of the Erudus System take steps to ensure the information is regularly updated, they give no warranty and no guarantee that the information is accurate. Product information and ingredients may change, please always read product labels carefully in addition to using the information provided by Erudus.

We do not accept liability for any inaccuracies or incorrect information contained on this site.  
Please visit <http://www.erudus.com/terms-and-conditions> for full terms and conditions.