

Changed Apr 09, 2024 13:22

Reviewed Apr 09, 2024 13:22

Erudus ID 547d407fcdd54509969194925d6c2092

Version 2.0

RECEIVED
 Thomas Ridley QC Dept.
 12:38 pm, 11 Apr 2024

The food information supplied by Thomas Ridley Foodservice has been provided by the respective product manufacturer. Whilst we use reasonable endeavours to check this information and ensure its accuracy, we do not give any warranty (whether express or implied), guarantee or representation that it is true, accurate or complete in any respect.

As product information, ingredients, nutritional guides and dietary or allergy advice may change from time to time, we recommend that you always carefully read the product label prior to using or consuming any such products. You should not solely rely upon the information we provide and make your own assessment as to the suitability or otherwise of any given product.



14003

Kuhne Whole Gherkins (4 x 2.45kg)

Whole Gherkins 4x2.45kg

PRODUCT DESCRIPTION

Pickled gherkins in a sweet-sour brine, pasteurised.

Brand	R.H.Amar & Co Limited
Manufacturer Product Code	KU102
Product Type	Food
Product Category	Pickled / Preserved
Storage Type	Ambient
Erudus ID	547d407fcdd54509969194925d6c2092
Specification Type	Generic



Inner Component GTIN 0000040804668

Outer Case GTIN 04012200790281



INGREDIENTS

Ingredient Declaration

Gherkins, Water, Spirit Vinegar, Glucose- Fructose syrup, Dill, MUSTARD seed, Red pepper, Onions, Salt, Sugar, Natural Flavouring.

ALLERGENS

Product Contains:

Celery/Celeriac	No	Mustard	Yes
Cereals Containing Gluten	No	Nuts (Tree)	No
Barley	No	Almond nuts	No
Oats	No	Brazil nuts	No
Rye	No	Cashew nuts	No
Wheat (including Spelt and Khorasan)	No	Hazelnuts	No
Crustacea	No	Macadamia (Queensland) nuts	No
Eggs	No	Pecan nuts	No
Fish	No	Pistachio nuts	No
Lupin	No	Walnuts	No
Milk	No	Peanuts	No
Molluscs	No	Sesame Seeds	No
		Soybeans	No
		Sulphur Dioxide and Sulphites	No

SUPPLEMENTARY INGREDIENT INFORMATION

Palm Oil	No
Hydrogenated Vegetable Oil/Fat	No
GM Protein/DNA	No

ADDITIVES

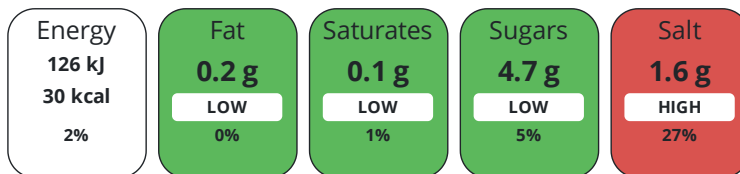
Product Contains:

Artificial Antioxidants	No	Artificial Flavourings	No
Artificial Colours	No	Artificial Preservatives	No
Artificial Flavour Enhancers	No	Artificial Sweeteners	No
Vegan Diet	Suitable for	Vegetarian Diet	Suitable for
Halal Diet	No	Kosher Diet	Certified

DIET SUITABILITY

NUTRITIONAL INFORMATION

Each 100g/ml portion contains:



of your reference intake.

Typical values per 100g/ml : Energy 30kcal / 126kJ

Nutrient	per 100g	RI per 100g
Energy (kJ)	126 kJ	2%
Energy (kcal)	30 kcal	2%
Fat	0.2 g	0%
of which Saturates	< 0.1 g	1%
Carbohydrate	4.9 g	2%
of which Sugars	4.7 g	5%
Fibre	1.3 g	
Protein	0.9 g	2%
Salt	1.6 g	27%

SUPPLEMENTARY NUTRITIONAL INFORMATION

HANDLING & STORAGE INFORMATION

Directions For Use

None

Storage Instructions

Store in a cool, dry place.

Shelf Life from Time of Production	645 Days	Exempt From Shelf Life Labelling	No
---	----------	---	----

ACCREDITATIONS/ CERTIFICATIONS/ ASSURANCE SCHEMES ORIGIN

IFS Food Standard

Product Country of Origin/Place of Germany

Provenance

Standards Testing

PRODUCT CHARACTERISTICS

Do you undertake trend analysis of microbiological results?	No	Is shelf life testing undertaken?	No
--	----	--	----

Analytical Standards

Test	Description	Frequency	Target	Range	Sample (g or ml)
Acidity (%)		Every Batch	=0.75	0.65 to 0.85	100
Brix (°Bx)		Every Batch	=6.5	5.5 to 7.5	100

Test	Description	Frequency	Target	Range	Sample (g or ml)
pH		Every Batch	<4.2	0 to 4.2	100
Salt Content (%)		Every Batch	=1.6	1.4 to 1.8	100

CONFIGURATION

Case Configuration Inner Pack Configuration

Total Quantity of Inner Components in Outer Case 4 Units

Is the Outer Case Splittable? Yes

PRODUCT WEIGHTS

Inner Component

Variable Weight Consumer Item No

Inner Component Weight 2.45 kg

Net Drained Weight 1.32 kg

Outer Case

Outer Case Gross Weight 14.4 kg

Outer Case Net Weight 9.8 kg

PRODUCT DIMENSIONS

Inner Component

Inner Component Depth 150 mm

Inner Component Width 120 mm

Inner Component Height 250 mm

Outer Case

Outer Case Depth 300 mm

Outer Case Width 250 mm

Outer Case Height 250 mm

PALLET INFORMATION

Quantity of Cases Per Pallet Layer 15 Cases

Pallet Height 1 MTR

Quantity of Layers Per Pallet 4 Layers

Pallet Gross Weight 896 kg

Quantity of Cases Per Pallet 60 Cases

PACKAGING

Inner Component Packaging

Type	Materials	Weight	Recycled Plastic %	Recyclable	Returnable	Composite
Label	Paper/Cardboard	2 g	- %			
Jar	Glass	1240 g	- %			
Lid	Steel	20 g	- %			

Outer Case Packaging

Type	Materials	Weight	Recycled Plastic %	Recyclable	Returnable	Composite
Shrink Wrap	Plastic	20 g	- %			
Case	Paper/Cardboard	70 g	- %			

OTHER INFORMATION

Intrastat/Taric Code 20011000

CONTACT
INFORMATION

Address

R.H.Amar & Co Limited
Turnpike Way
High Wycombe
Bucks
HP12 3TF
England

P: (Phone) +44 (0) 1494 530 200

The information on the [Erudus System](#) has been supplied by the manufacturers of the products and, whilst the owners of the Erudus System take steps to ensure the information is regularly updated, they give no warranty and no guarantee that the information is accurate. Product information and ingredients may change, please always read product labels carefully in addition to using the information provided by Erudus.

We do not accept liability for any inaccuracies or incorrect information contained on this site.
Please visit <http://www.erudus.com/terms-and-conditions> for full terms and conditions.