

14267

CIAPANINI ROLL (RTA)

Ciapanini Roll 40x100g

PRODUCT DESCRIPTION

Frozen, fully baked ciabatta-style panini.

Brand	Speciality Breads Limited
Manufacturer Product Code	PAN04
Product Type	Food
Product Category	Bread Buns & Rolls
Storage Type	Frozen
Erudus ID	c2e57e1294fe4227a392ceb3f8688993
Specification Type	Bakery Products

Outer Case GTIN5032633160047



INGREDIENTS

Ingredient Declaration
Wheat Flour (Fortified with Calcium Carbonate, Niacin, Iron, Thiamin), Water, Extra Virgin Rapeseed Oil, Yeast, Salt, Flour Treatment Agent: E 300

ALLERGENS

Product Contains:

Celery/Celeriac	No
Cereals Containing Gluten	Yes
Barley	May Contain
Oats	No
Rye	May Contain
Wheat (including Spelt and Khorasan)	Yes
Crustacea	No
Eggs	May Contain
Fish	No
Lupin	No
Milk	May Contain
Molluscs	No

Mustard	No
Nuts (Tree)	No
Almond nuts	No
Brazil nuts	No
Cashew nuts	No
Hazelnuts	No
Macadamia (Queensland) nuts	No
Pecan nuts	No
Pistachio nuts	No
Walnuts	No
Peanuts	No
Sesame Seeds	No
Soybeans	No
Sulphur Dioxide and Sulphites	No

Risk Source:

SUPPLEMENTARY
INGREDIENT
INFORMATION

Palm Oil	No
Hydrogenated Vegetable Oil/Fat	No
GM Protein/DNA	No

ADDITIVES

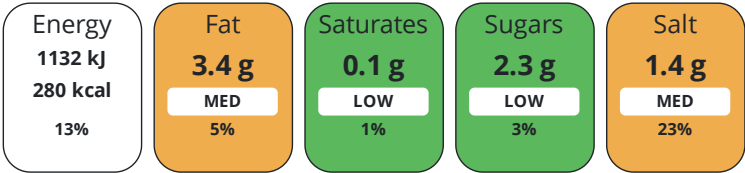
Product Contains:

Artificial Antioxidants	No	Artificial Flavourings	No
Artificial Colours	No	Artificial Preservatives	No
Artificial Flavour Enhancers	No	Artificial Sweeteners	No
Vegan Diet	Suitable for	Vegetarian Diet	Suitable for
Halal Diet	No	Kosher Diet	No

DIET
SUITABILITY

NUTRITIONAL
INFORMATION

Each 100g/ml portion contains:



of your reference intake.

Typical values per 100g/ml : Energy 280kcal / 1132kJ

Nutrient	per 100g	RI per 100g
Energy (kJ)	1132 kJ	13%
Energy (kcal)	280 kcal	14%
Fat	3.4 g	5%
of which Saturates	0.1 g	1%
of which Mono-unsaturates	1.5 g	
of which Polyunsaturates	0.8 g	
Carbohydrate	54 g	21%
of which Sugars	2.3 g	3%
Fibre	2.5 g	
Protein	9.4 g	19%
Salt	1.4 g	23%

SUPPLEMENTARY
NUTRITIONAL
INFORMATION

HFSS (HIGH IN
FAT, SALT AND
SUGAR)
HANDLING &
STORAGE
INFORMATION

HFSS Status	No
Directions For Use	DEFROST INSIDE FOOD-SAFE PLASTIC BAG AT ROOM TEMPERATURE UNTIL COMPLETELY THAWED. TOAST IN PANINI TOASTER AS PER MANUFACTURER'S RECOMMENDATIONS.
Storage Instructions	FROZEN. STORE AT -18°C. ONCE DEFROSTED DO NOT RE-FREEZE.
Shelf Life from Time of Production	365 Days
BRCGS Certified	Red Tractor
Other Accreditation	
Product Country of Origin/Place of Provenance	United Kingdom
Additional Origin Details	n/a

ACCREDITATIONS/
CERTIFICATIONS/
ASSURANCE
SCHEMES
ORIGIN

PRODUCT CHARACTERISTICS	Standards Testing							
	Do you undertake trend analysis of microbiological results?	Yes	Is shelf life testing undertaken?		Yes			
CONFIGURATION	Case Configuration		Inner Pack Configuration					
	Total Quantity of Inner Components in Outer Case	40 Units						
	Is the Outer Case Splittable?	No						
PRODUCT WEIGHTS	Inner Component							
	Variable Weight Consumer Item	No						
	Inner Component Weight	100 g						
	Net Drained Weight	0 g						
	Outer Case							
	Outer Case Gross Weight	4.38 kg						
PRODUCT DIMENSIONS	Outer Case Net Weight		0.38 kg					
	Inner Component							
	Inner Component Depth	595 mm						
	Inner Component Width	235 mm						
	Inner Component Height	268 mm						
	Outer Case							
	Outer Case Depth	238 mm						
	Outer Case Width	598 mm						
	Outer Case Height	268 mm						
	PALLET INFORMATION	Quantity of Cases Per Pallet Layer	8 Cases	Pallet Type		UK Standard Pallet		
Quantity of Layers Per Pallet		6 Layers	Pallet Height		1.85 MTR			
Quantity of Cases Per Pallet		48 Cases	Pallet Gross Weight		222.88 kg			
PACKAGING	Inner Component Packaging							
	Type	Materials	Weight	Recycled Plastic %	Recyclable	Returnable	Composite	
	Film	Plastic	17 g	- %				
	Outer Case Packaging							
	Type	Materials	Weight	Recycled Plastic %	Recyclable	Returnable	Composite	
	Case	Paper/Cardboard	389 g	- %				
	Transport Packaging							
	Type	Materials	Weight	Recycled Plastic %	Recyclable	Returnable	Composite	
	Other	Plastic	475 g	- %		Yes		
	OTHER INFORMATION	Intrastat/Taric Code		1905				

CONTACT
INFORMATION

Address

Speciality Breads Limited
Unit J2 Channel Road
Westwood Industrial Estate
Margate
Kent
CT9 4JS
England

P: (Phone) 01843 209442

Complaints Contact

Jemima Vickers
Head of Technical
jemima@specialitybreads.co.uk

P: (Phone) 01843 209442

Technical Contact

Jemima Vickers
Head of Technical
jemima@specialitybreads.co.uk

The information on the [Erudus System](#) has been supplied by the manufacturers of the products and, whilst the owners of the Erudus System take steps to ensure the information is regularly updated, they give no warranty and no guarantee that the information is accurate. Product information and ingredients may change, please always read product labels carefully in addition to using the information provided by Erudus.

We do not accept liability for any inaccuracies or incorrect information contained on this site.
Please visit <http://www.erudus.com/terms-and-conditions> for full terms and conditions.