


Changed Nov 04, 2024 15:59


Reviewed Nov 04, 2024 15:59

Erudus ID d5d2b4c64f9f4e5998b132f9ca7f4943

Version 4.0



**RECEIVED**  
Thomas Ridley QC Dept.  
2:58, 1 Apr 2025



erudus  
United around food data

The food information supplied by Thomas Ridley Foodservice has been provided by the respective product manufacturer. Whilst we use reasonable endeavours to check this information and ensure its accuracy, we do not give any warranty (whether express or implied), guarantee or representation that it is true, accurate or complete in any respect.

As product information, ingredients, nutritional guides and dietary or allergy advice may change from time to time, we recommend that you always carefully read the product label prior to using or consuming any such products. You should not solely rely upon the information we provide and make your own assessment as to the suitability or otherwise of any given product.

# 10" CHEESE & ONION QUICHE WHOLE 1.3KG

Cheese & Onion Quiche 1x1.3kg

## PRODUCT DESCRIPTION

Authentic Vegetarian Quiche in a pastry case filled with a mixture using: Pasteurised Eggs; Grated Mature Cheddar and Onions.

Brand	Roberts Country Fayre
Manufacturer Product Code	SQW02
Product Type	Food
Product Category	Pies, Sausage Rolls, Savouries
Storage Type	Frozen
Erudus ID	d5d2b4c64f9f4e5998b132f9ca7f4943
Specification Type	Bakery Products

Outer Case GTIN05060053811027



## INGREDIENTS

### Ingredient Declaration

Water, EGG (19%), Fortified WHEAT flour(Self raising WHEAT flour, calcium carbonate, iron, nicotinamide, thiamine hydrochloride Raising Agents E500, E341), Grated Mature Cheddar Cheese(7%)(MILK), Onions (7%), Vegetable Oil (Rape, Palm, Emulsifier E471, Flavouring, Colours E160b(i), E100), Full Cream MILK Powder, Stabiliser thickener (modified waxy maize starch (acetylated di-starch adipate E1422), carboxy methyl cellulose E466), preservative (potassium sorbate E202), stabiliser (carrageenan E407), Salt, Pepper, Spring Onion.

## ALLERGENS

Product Contains:

Celery/Celeriac	No	Mustard	No
Cereals Containing Gluten	Yes	Nuts (Tree)	No
Barley	No	Almond nuts	No
Oats	No	Brazil nuts	No
Rye	No	Cashew nuts	No
Wheat (including Spelt and Khorasan)	Yes	Hazelnuts	No
Crustacea	No	Macadamia (Queensland) nuts	No
Eggs	Yes	Pecan nuts	No
Fish	No	Pistachio nuts	No
Lupin	No	Walnuts	No
Milk	Yes	Peanuts	No
Molluscs	No	Sesame Seeds	No
		Soybeans	No
		Sulphur Dioxide and Sulphites	No

## SUPPLEMENTARY INGREDIENT INFORMATION

Palm Oil	Yes
Hydrogenated Vegetable Oil/Fat	No
GM Protein/DNA	No

ADDITIVES

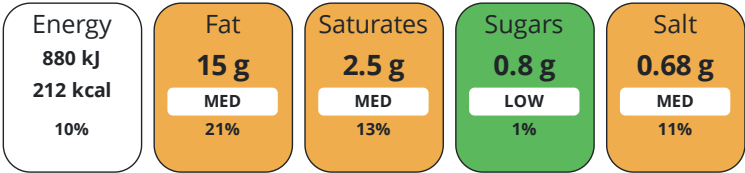
Product Contains:

Artificial Antioxidants	No	Artificial Flavourings	No
Artificial Colours	No	Artificial Preservatives	No
Artificial Flavour Enhancers	No	Artificial Sweeteners	No
Vegan Diet	No	Vegetarian Diet	Suitable for
Halal Diet	No	Kosher Diet	No

DIET  
SUITABILITY

NUTRITIONAL  
INFORMATION

Each 100g/ml portion contains:



of your reference intake.

Typical values per 100g/ml : Energy 212kcal / 880kJ

Nutrient	per 100g	RI per 100g
Energy (kJ)	880 kJ	10%
Energy (kcal)	212 kcal	11%
Fat	15 g	21%
of which Saturates	2.5 g	13%
Carbohydrate	12 g	5%
of which Sugars	0.8 g	1%
Protein	7.2 g	14%
Salt	0.68 g	11%

SUPPLEMENTARY  
NUTRITIONAL  
INFORMATION

HANDLING &  
STORAGE  
INFORMATION

Directions For Use	Defrost overnight in refrigerator.
Storage Instructions	-18 DEGREES
Shelf Life from Time of Production	365 Days
SALSA (Safe & Local Supplier Approval)	
Product Country of Origin/Place of Provenance	United Kingdom
Standards Testing	
Do you undertake trend analysis of microbiological results?	No
Is shelf life testing undertaken?	No
Case Configuration	Inner Pack Configuration
Total Quantity of Inner Components in Outer Case	1 Units
Is the Outer Case Splittable?	No

ACCREDITATIONS/  
CERTIFICATIONS/  
ASSURANCE  
SCHEMES  
ORIGIN

PRODUCT  
CHARACTERISTICS

CONFIGURATION

PRODUCT WEIGHTS	Inner Component								
	Variable Weight Consumer Item		No						
	Inner Component Weight		1.3 kg						
	Outer Case								
	Outer Case Gross Weight		1.5 kg						
	Outer Case Net Weight		1.3 kg						
PRODUCT DIMENSIONS	Inner Component								
	Inner Component Depth		280 mm						
	Inner Component Width		280 mm						
	Inner Component Height		55 mm						
	Outer Case								
	Outer Case Depth		295 mm						
PALLET INFORMATION	Outer Case Width		295 mm						
	Outer Case Height		55 mm						
	Quantity of Cases Per Pallet Layer		12 Cases		Pallet Height		1.4 MTR		
	Quantity of Layers Per Pallet		20 Layers		Pallet Gross Weight		400 kg		
	Quantity of Cases Per Pallet		240 Cases						
	PACKAGING	Inner Component Packaging							
Type		Materials	Weight	Recycled Plastic %	Recyclable	Returnable	Composite		
Box		Plastic	0.01 g	- %					
Box		Paper/Cardboard	126 g	- %					
Outer Case Packaging									
Type		Materials	Weight	Recycled Plastic %	Recyclable	Returnable	Composite		
Case		Paper/Cardboard	0.13 g	- %					
Transport Packaging									
Type		Materials	Weight	Recycled Plastic %	Recyclable	Returnable	Composite		
Other		Paper/Cardboard	0.13 g	- %					
Other		Wood	30 g	- %					
OTHER INFORMATION						Identification/Health Marks		UK WX 015	
CONTACT INFORMATION		Address							
		Roberts Country Fayre							
	Units 9/10 Bersham Enterprise Ct								
	Plas Grono Road, Rhostyllen								
	Wrexam								
	LL14 4EG								
England									
P: (Phone) 01978264444									

The information on the [Erudus System](#) has been supplied by the manufacturers of the products and, whilst the owners of the Erudus System take steps to ensure the information is regularly updated, they give no warranty and no guarantee that the information is accurate. Product information and ingredients may change, please always read product labels carefully in addition to using the information provided by Erudus.

