

10" TOMATO & BASIL QUICHE 1.3Kg WHOLE

Tomato And Basil Quiche. 1x1.3kg

PRODUCT DESCRIPTION

Authentic Quiche in a pastry case filled with a mixture using: Pasteurised Eggs; Grated Mature Cheddar Cheese, Onions, Fresh Tomatoes and a sprinkle of Basil.

Brand	Roberts Country Fayre
Manufacturer Product Code	SQW17
Product Type	Food
Product Category	Pies, Sausage Rolls, Savouries
Storage Type	Frozen
Erudus ID	909dff9757cf495ebc09c01d229763b8
Specification Type	Bakery Products
Outer Case GTIN	05060053811171



INGREDIENTS

Ingredient Declaration

Water, EGG (19%), Fortified WHEAT flour(Self raising WHEAT flour, calcium carbonate, iron, nicotinamide, thiamine hydrochloride Raising Agents E500, E341), Tomato (12%), Grated Mature Cheddar Cheese(7%)(MILK), Onions (7%), Vegetable Oil (Rape, Palm, Emulsifier E471, Flavouring, Colours E160b(i), E100), Full Cream MILK Powder, Stabiliser thickener (modified waxy maize starch (acetylated di-starch adipate E1422), carboxy methyl cellulose E466), preservative (potassium sorbate E202), stabiliser (carrageenan E407), Salt, Pepper. Herb (Basil)(1%).

ALLERGENS

Product Contains:

Celery/Celeriac	No
Cereals Containing Gluten	Yes
Barley	No
Oats	No
Rye	No
Wheat (including Spelt and Khorasan)	Yes
Crustacea	No
Eggs	Yes
Fish	No
Lupin	No
Milk	Yes
Molluscs	No

Mustard	No
Nuts (Tree)	No
Almond nuts	No
Brazil nuts	No
Cashew nuts	No
Hazelnuts	No
Macadamia (Queensland) nuts	No
Pecan nuts	No
Pistachio nuts	No
Walnuts	No
Peanuts	No
Sesame Seeds	No
Soybeans	No
Sulphur Dioxide and Sulphites	No

SUPPLEMENTARY INGREDIENT INFORMATION

Palm Oil	Yes
Hydrogenated Vegetable Oil/Fat	No
GM Protein/DNA	No

ADDITIVES

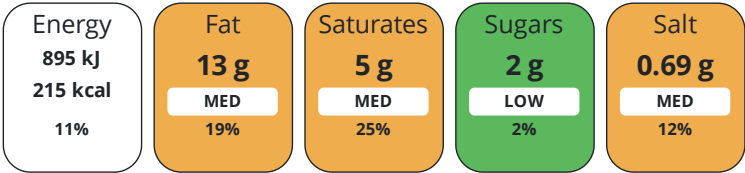
Product Contains:

Artificial Antioxidants	No	Artificial Flavourings	No
Artificial Colours	No	Artificial Preservatives	No
Artificial Flavour Enhancers	No	Artificial Sweeteners	No
Vegan Diet	No	Vegetarian Diet	Suitable for
Halal Diet	No	Kosher Diet	No

DIET
SUITABILITY

NUTRITIONAL
INFORMATION

Each 100g/ml portion contains:



of your reference intake.

Typical values per 100g/ml : Energy 215kcal / 895kJ

Nutrient	per 100g	RI per 100g
Energy (kJ)	895 kJ	11%
Energy (kcal)	215 kcal	11%
Fat	13 g	19%
of which Saturates	5 g	25%
Carbohydrate	16 g	6%
of which Sugars	2 g	2%
Fibre	1.2 g	
Protein	8 g	16%
Salt	0.69 g	12%

SUPPLEMENTARY
NUTRITIONAL
INFORMATION

HANDLING &
STORAGE
INFORMATION

Directions For Use

Defrost overnight in refrigerator.

Storage Instructions

-18 degrees

Storage Instructions After Opening

Chill

Shelf Life from Time of Production	365 Days
Shelf Life Once Defrosted	5 Days

SALSA (Safe & Local Supplier Approval)

ACCREDITATIONS/
CERTIFICATIONS/
ASSURANCE
SCHEMES
ORIGIN

Product Country of Origin/Place of Provenance	United Kingdom
---	----------------

PRODUCT
CHARACTERISTICS

Standards Testing		
Do you undertake trend analysis of microbiological results?	No	Is shelf life testing undertaken? No

CONFIGURATION	Case Configuration		Inner Pack Configuration				
	Total Quantity of Inner Components in Outer Case		1 Units				
	Is the Outer Case Splittable?		No				
PRODUCT WEIGHTS	Inner Component						
	Variable Weight Consumer Item		No				
	Inner Component Weight		1.3 kg				
	Outer Case						
	Outer Case Gross Weight		1.5 kg				
	Outer Case Net Weight		1.3 kg				
PRODUCT DIMENSIONS	Inner Component						
	Inner Component Depth		280 mm				
	Inner Component Width		280 mm				
	Inner Component Height		50 mm				
	Outer Case						
	Outer Case Depth		280 mm				
	Outer Case Width		280 mm				
	Outer Case Height		50 mm				
PALLET INFORMATION	Quantity of Cases Per Pallet Layer		12 Cases		Pallet Height		1.4 MTR
	Quantity of Layers Per Pallet		20 Layers		Pallet Gross Weight		400 kg
	Quantity of Cases Per Pallet		240 Cases				
PACKAGING	Outer Case Packaging						
	Type	Materials	Weight	Recycled Plastic %	Recyclable	Returnable	Composite
	Case	Paper/Cardboard	0.13 g	- %			
	Transport Packaging						
	Type	Materials	Weight	Recycled Plastic %	Recyclable	Returnable	Composite
	Other	Paper/Cardboard	0.13 g	- %			
	Other	Wood	30 g	- %			
					Identification/Health Marks		UK WX 015
OTHER INFORMATION							
CONTACT INFORMATION	Address						
	Roberts Country Fayre						
	Units 9/10 Bersham Enterprise Ct						
	Plas Grono Road, Rhostyllen						
Wrexam							
LL14 4EG							
England							
P: (Phone) 01978264444							

The information on the [Erudus System](#) has been supplied by the manufacturers of the products and, whilst the owners of the Erudus System take steps to ensure the information is regularly updated, they give no warranty and no guarantee that the information is accurate. Product information and ingredients may change, please always read product labels carefully in addition to using the information provided by Erudus.

